

KEY

- CHANNELIZING DEVICES
- ← TRAFFIC FLOW

STANDARD NOTES

(SEE 102-GEN-NOTES)

GENERAL: G1, G2, G3, G4

SIGNING: S1

DEVICES: TCD1, TCD2

RAMP: RMP2

WORK ZONE SPEED LIMIT / RAMP TAPER LENGTH

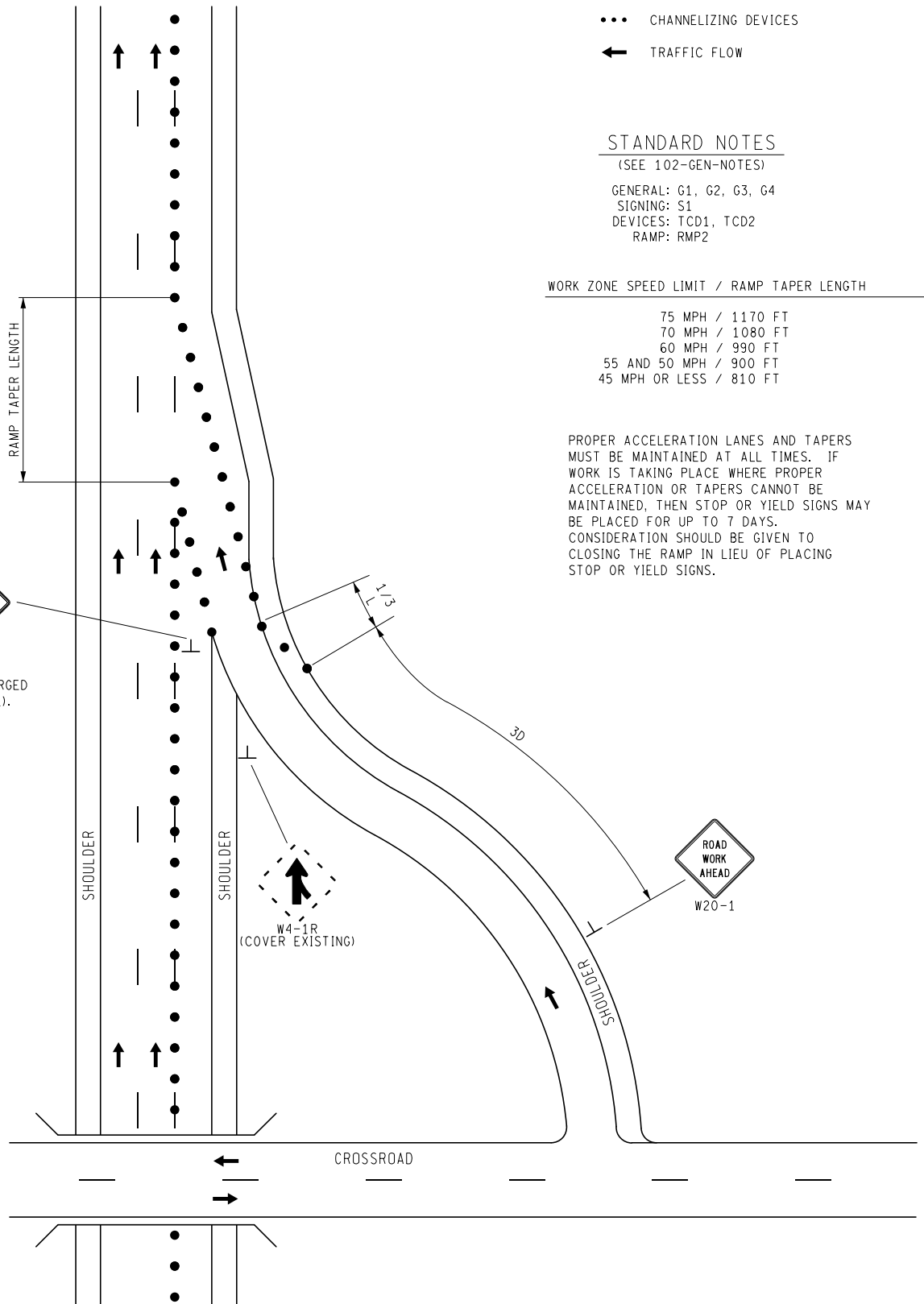
75 MPH	/	1170 FT
70 MPH	/	1080 FT
60 MPH	/	990 FT
55 AND 50 MPH	/	900 FT
45 MPH OR LESS	/	810 FT

PROPER ACCELERATION LANES AND TAPERS MUST BE MAINTAINED AT ALL TIMES. IF WORK IS TAKING PLACE WHERE PROPER ACCELERATION OR TAPERS CANNOT BE MAINTAINED, THEN STOP OR YIELD SIGNS MAY BE PLACED FOR UP TO 7 DAYS. CONSIDERATION SHOULD BE GIVEN TO CLOSING THE RAMP IN LIEU OF PLACING STOP OR YIELD SIGNS.



W4-1R

USE W4-1 WHEN HAVING TRAFFIC MERGED INTO AN OPEN LANE (AS SHOWN HERE).



NOT TO SCALE

	MAINTENANCE MAINTAINING TRAFFIC TYPICAL	DURATION: LONG-TERM STATIONARY INTERMEDIATE-TERM STATIONARY SHORT-TERM STATIONARY	OUTSIDE LANE CLOSURE ON A FREEWAY THROUGH ENTRANCE RAMP AREA FREEFLOW CONDITION	DATE: MAY 2021
	FILE: 4221-FW-EnR-0-LC-FREE.dgn			NO: 4221-FW EnR-0-LC-FREE SHEET: 1 OF 1