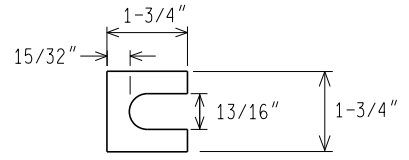
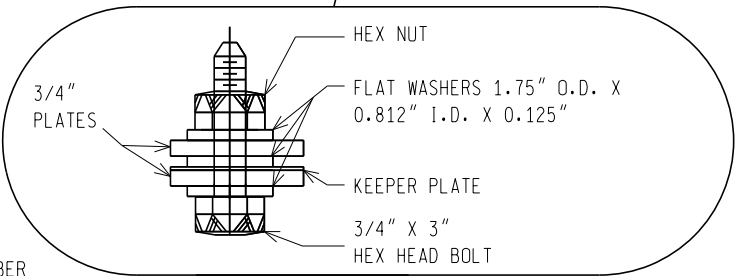


ELEVATION
(FACING TRAFFIC)

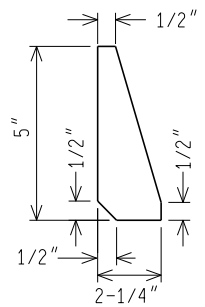
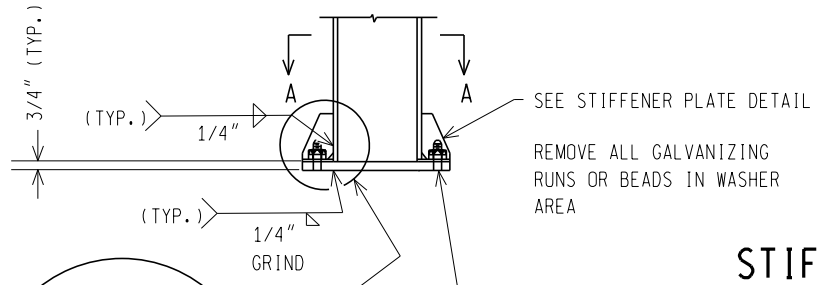
END ELEVATION



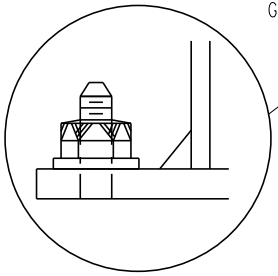
FURNISH 2 \leftrightarrow 0.012" OR 2 \leftrightarrow 0.034" THICK SHIMS PER COLUMN, SHIMS SHALL BE FABRICATED FROM BRASS OR GALVANIZED STEEL SHIM STOCK OR STRIP. A MAX. OF 2 SHIMS PER COLUMN SHALL BE USED. ANY COMBINATION OF SHIMS IS ALLOWED AS LONG AS THE TOTAL NUMBER OF SHIMS DOES NOT EXCEED 2 PER COLUMN.



SHIM DETAIL



STIFFENER PLATE DETAIL



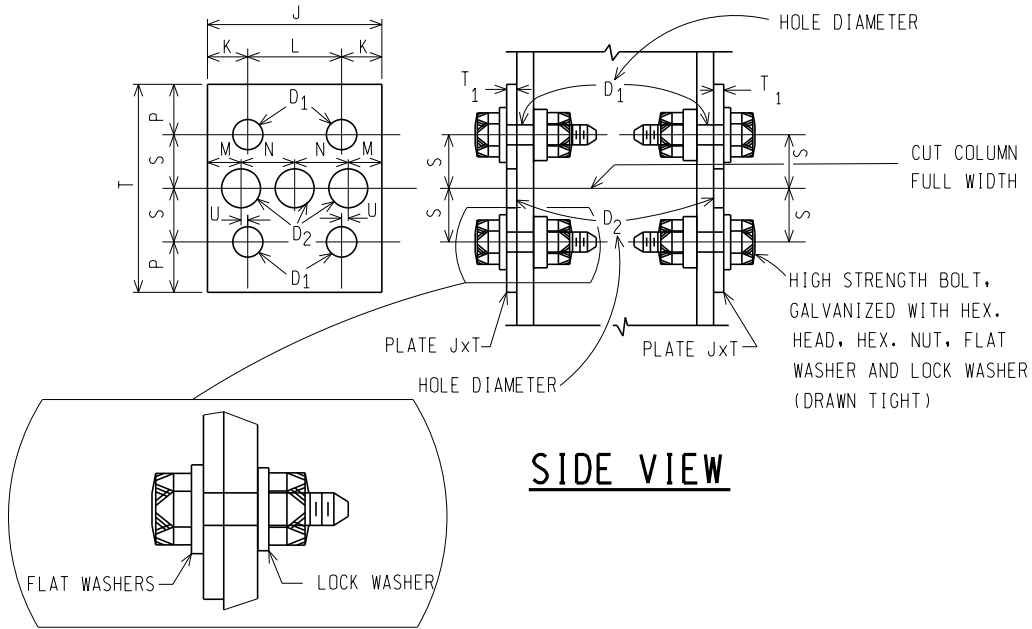
REMOVE ALL GALVANIZING RUNS OR BEADS IN WASHER AREA

SEE STIFFENER PLATE DETAIL

STAINLESS STEEL BOLT WITH HEX HEAD, HEX NUT AND 3 WASHERS WITH BOLT (4 REQUIRED). USE 3/4" DIA. X 3" BOLTS TORQUED TO 75 FT-LBS (DO NOT OVERTIGHTEN). FOR TIGHTENING PROCEDURE SEE STEP C AND D UNDER NOTE 1.

COLUMN END VIEW

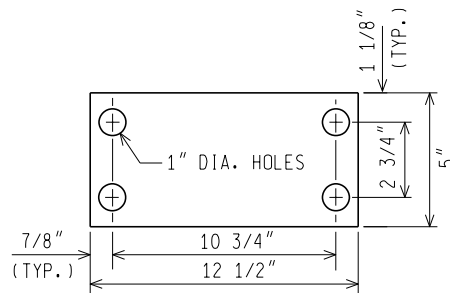
<p>PREPARED BY TSMO DIVISION</p> <p>DRAWN BY: <u>SG</u></p> <p>CHECKED BY: <u>AJU</u></p>	<p>DEPARTMENT DIRECTOR Bradley C. Wiefelich, P.E.</p> <p>APPROVED BY: _____ DIRECTOR, BUREAU OF FIELD SERVICES</p>	<p>MICHIGAN DEPARTMENT OF TRANSPORTATION</p> <p>STEEL COLUMN BREAK-AWAY (W)</p>		
	<p>APPROVED BY: _____ DIRECTOR, BUREAU OF DEVELOPMENT</p>	<p>(SPECIAL DETAIL) F.H.W.A. APPROVAL</p>	<p>03/26/26 PLAN DATE</p>	<p>SIGN-220-D</p>



SIDE VIEW

FUSE PLATE DETAILS

COLUMN SIZE	FUSE PLATE DIMENSIONS (inches)												BOLT SIZE
	J	K	L	M	N	P	S	T	U	T ₁	D ₁	D ₂	
W8 x 13	4	7/8	2-1/4	25/32 ± 1/32	1-7/32 ± 1/32	1-1/4	1-1/4	5	3/32	1/4	13/16	7/8	3/4 DIA. X 1-3/4
W8 x 18	5-1/4	1-1/4	2-3/4	1 ± 1/32	1-5/8 ± 1/32	1-1/2	1-1/2	6	1/4	5/16	15/16	1-1/4	7/8 DIA. X 2



KEEPER PLATE DETAIL

(28 GA GALVANIZED STEEL)

NOT TO SCALE

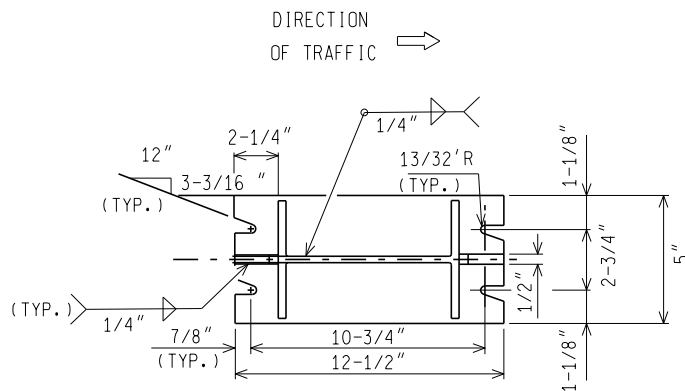
MICHIGAN DEPARTMENT OF TRANSPORTATION

(SPECIAL DETAIL)
F.H.W.A. APPROVAL

03/26/26
PLAN DATE

SIGN-220-D

SHEET
2 OF 3



SECTION A-A

SECTION SHOWN IS FOR INSTALLATION ON RIGHT SHOULDER AND IN GORE.
 PLATE SLOT BEVELS ARE OPPOSITE HAND FROM THAT SHOWN FOR
 INSTALLATIONS ON LEFT SHOULDER.

NOTES:

1. PROCEDURE FOR ASSEMBLY OF BASE CONNECTION:
 - A. ASSEMBLE COLUMN TO STUB WITH BOLTS AND WITH ONE FLAT WASHER ON EACH BOLT BETWEEN PLATES.
 - B. NUMBER OF SHIMS LIMITED TO TWO PER COLUMN.
 - C. TIGHTEN BOLTS IN SYSTEMATIC ORDER TO THE PRESCRIBED TORQUE. DO NOT OVERTIGHTEN.
 - D. LOOSEN EACH BOLT & RETIGHTEN TO PRESCRIBED TORQUE IN THE SAME ORDER AS INITIAL TIGHTENING, USE COLORED LOCTITE.
2. DESIGN CONFORMS WITH AASHTO SPECIFICATIONS FOR THE DESIGN AND CONSTRUCTION OF STRUCTURAL SUPPORTS FOR HIGHWAY SIGNS.
3. MATERIALS AND FABRICATION PER MDOT STANDARD SPECIFICATIONS FOR CONSTRUCTION.
4. ALL HIGH STRENGTH NUTS SHALL BE OF SUCH CAPACITY AS TO DEVELOP THE BOLT STRENGTH.
5. BOLTS, NUTS, AND WASHERS SHALL CONFORM TO SECTION 919.02C IN THE STANDARD SPECIFICATIONS UNLESS IDENTIFIED AS HIGH STRENGTH, IN WHICH CASE THEY SHALL CONFORM TO SECTION 906.07 IN THE STANDARD SPECIFICATIONS. HIGH STRENGTH BOLTS ARE NOT SUBJECT TO MDOT TESTING REQUIREMENTS.
6. ALL STRUCTURAL STEEL SHALL BE GALVANIZED AFTER FABRICATION EXCEPT WHERE NOTED.
7. ALL CONTACT AREAS OF PLATES AND COLUMN FLANGES SHALL BE FREE OF GALVANIZING BEADS OR RUNS.
8. THE KEEPER PLATE SHALL BE FABRICATED FROM 28 GA GALVANIZED STEEL AND PLACED BETWEEN THE COLUMN AND STUB.
9. WHEN EXISTING STEEL COLUMN BREAKAWAY SUPPORTS ARE TO BE RETAINED, REPLACE BOLTS, WASHERS, NUTS AND KEEPER PLATE.
10. THE SIGNS SHOULD BE PLACED ON THE SUPPORTS FOLLOWING SHS 10 - SUPPORT HOLE PLACEMENT. FOR RECTANGULAR SIGNS THE SUPPORT SHOULD BE LONG ENOUGH TO REACH THE TOP OF THE SIGN. THE SUPPORT SHOULD NOT EXTEND BEYOND THE TOP EDGE OF THE SIGN. FOR SIGN THAT ARE NOT RECTANGULAR, THE SUPPORT SHOULD EXTEND TO THE TOP OF THE SIGN WITHOUT EXTENDING BEYOND THE TOP EDGE. THE TOP EDGE. THE SUPPORT SHOULD NOT BE VISIBLE WHEN FACING THE SIGN.

NOT TO SCALE

MICHIGAN DEPARTMENT OF TRANSPORTATION

(SPECIAL DETAIL)
 F.H.W.A. APPROVAL

03/26/26
 PLAN DATE

SIGN-220-D

SHEET
 3 OF 3