

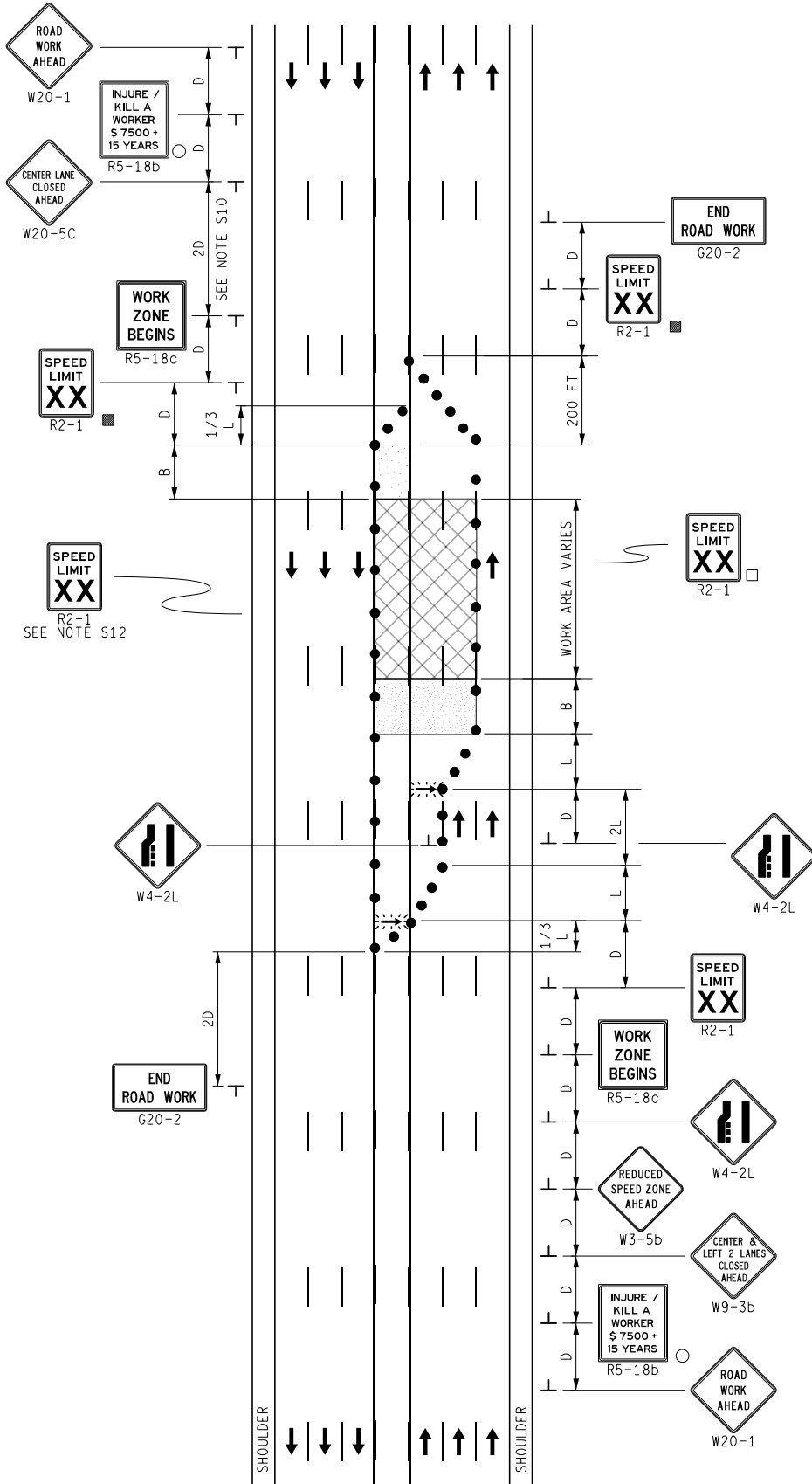
KEY

- CHANNELIZING DEVICES
- ⚡ LIGHTED ARROW PANEL
- ← TRAFFIC FLOW
- REFLECTS EXISTING SPEED LIMIT
- PLACE SIGN AS INDICATED IN NOTE S5
- PLACE SIGN AS INDICATED IN NOTE S2

STANDARD NOTES

(SEE 102-GEN-NOTES)

GENERAL: G1, G2, G3, G4
 SIGNING: S1, S2, S3, S5, S10, S12
 DEVICES: TCD1, TCD2, TCD6



	NOT TO SCALE	MAINTAINING TRAFFIC TYPICAL	CENTER LANE AND 2 LEFT LANE CLOSURES, 1 BOUND ON A 7-LANE UNDIVIDED ROADWAY	DATE: MAY 2021
		NO: 151-CLT(7)-2LC-(L)		SHEET: 1 OF 1