

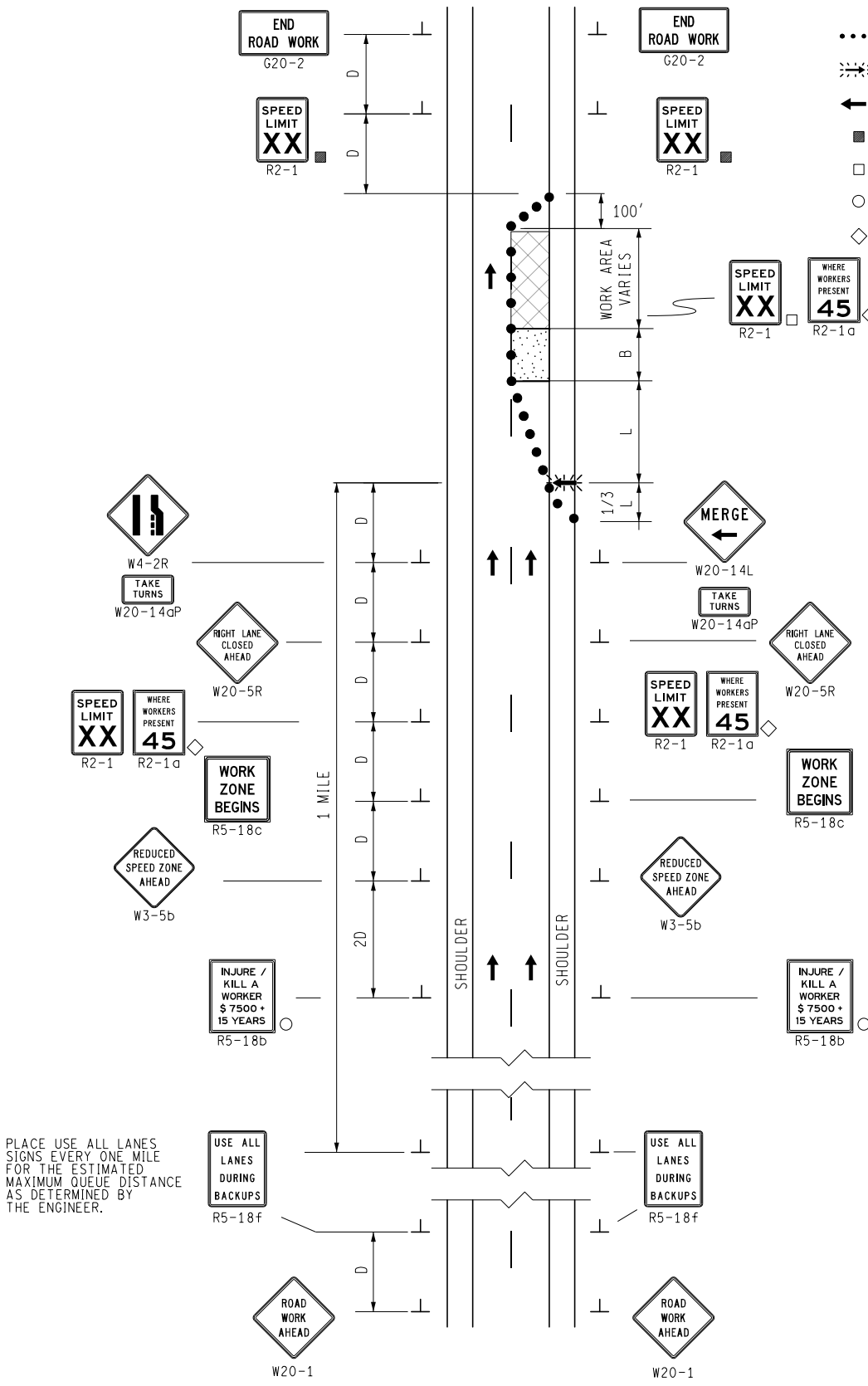
**KEY**

- CHANNELIZING DEVICES
- ⚡ LIGHTED ARROW PANEL
- ← TRAFFIC FLOW
- REFLECTS EXISTING SPEED LIMIT
- PLACE SIGN AS INDICATED IN NOTE S5
- PLACE SIGN AS INDICATED IN NOTE S2
- ◇ R2-1a OPTIONAL

**STANDARD NOTES**

(SEE 102-GEN-NOTES)

GENERAL: G1, G2, G3, G4  
 SIGNING: S1, S2, S3, S5, S6, S8  
 DEVICES: TCD1, TCD2, TCD6



PLACE USE ALL LANES SIGNS EVERY ONE MILE FOR THE ESTIMATED MAXIMUM QUEUE DISTANCE AS DETERMINED BY THE ENGINEER.



NOT TO SCALE

MAINTAINING TRAFFIC TYPICAL  
 NO: 343-SP-ZIP-1LC-(R)

SINGLE RIGHT LANE CLOSURE  
 WITH ZIPPER MERGE  
 ON A 2-LANE FREEWAY

DATE: MAY 2021  
 SHEET: 1 OF 1