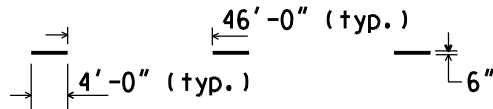


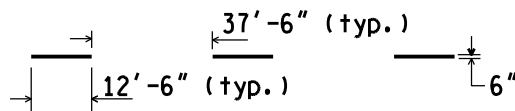
TYPES OF TEMPORARY LONGITUDINAL LINES

FREEWAY APPLICATIONS

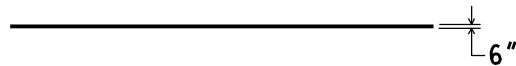
BROKEN WHITE LANE LINE (1)



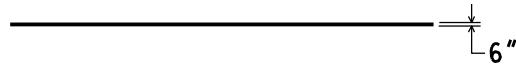
BROKEN WHITE LANE LINE (2)



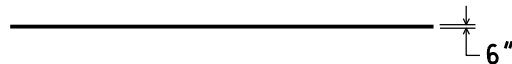
SOLID WHITE LANE LINE OR LANE SHIFT



SOLID WHITE EDGE LINE



SOLID YELLOW EDGE LINE



SOLID WHITE GORE MARKING



Notes:

1. See project documents for correct broken line pattern.



PREPARED
BY
TSMD DIVISION

DRAWN BY: MKB

CHECKED BY: KMW

DEPARTMENT DIRECTOR
Paul C. Ajegba

APPROVED BY: _____
(SPECIAL DETAIL)
DIRECTOR, BUREAU OF FIELD SERVICES

APPROVED BY: _____
(SPECIAL DETAIL)
DIRECTOR, BUREAU OF DEVELOPMENT

MICHIGAN DEPARTMENT OF TRANSPORTATION
BUREAU OF DEVELOPMENT STANDARD PLAN FOR

TEMPORARY LONGITUDINAL LINE TYPES & PLACEMENT

(SPECIAL DETAIL)
F.H.W.A. APPROVAL

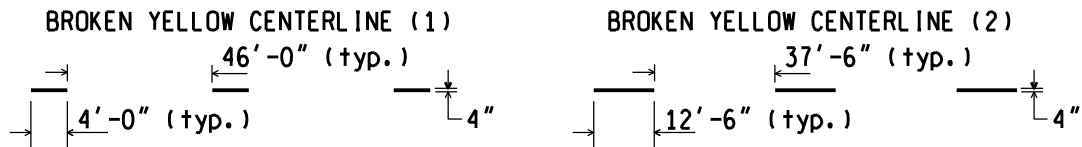
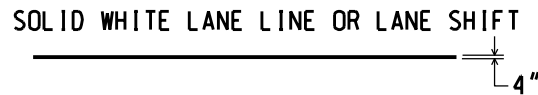
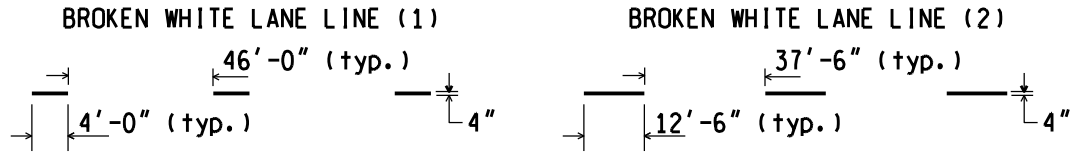
(SPECIAL DETAIL)
PLAN DATE

PAVE-904-A

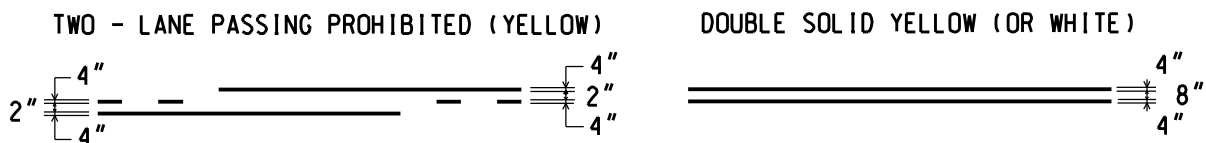
SHEET
1 OF 3

TYPES OF TEMPORARY LONGITUDINAL LINES

NON-FREEWAY APPLICATIONS



LINE PATTERNS

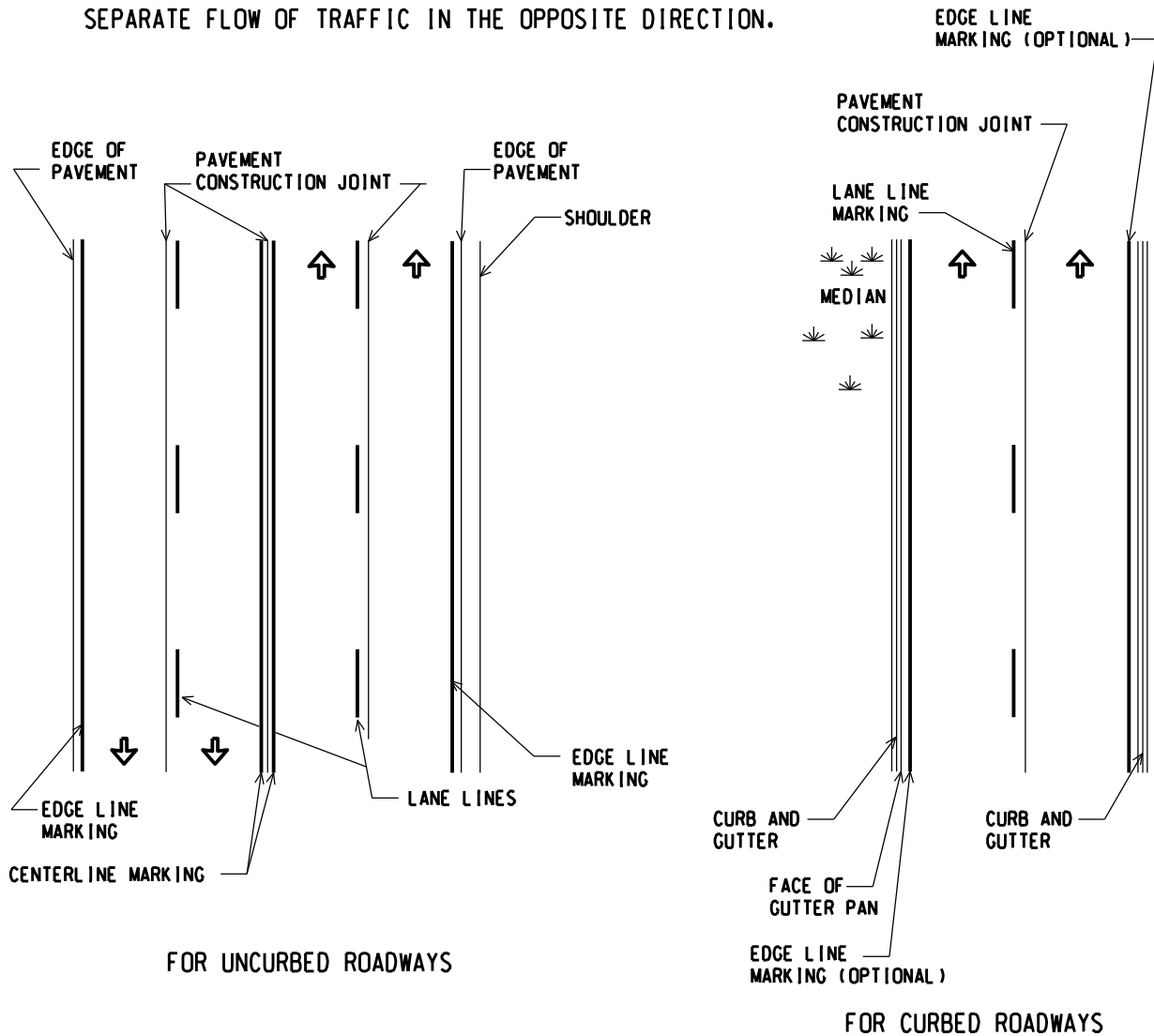


Notes:

1. See project documents for correct broken line pattern.

NOT TO SCALE

BASIC COLOR RULE: WHITE LINES SEPARATE FLOW OF TRAFFIC IN THE SAME DIRECTION. YELLOW LINES SEPARATE FLOW OF TRAFFIC IN THE OPPOSITE DIRECTION.



PLACEMENT OF LINES

Notes:

1. Temporary marking locations shall conform with section 812 of the Standard Specifications for Construction.
2. See PAVE-905 for locations of permanent pavement marking lines.
3. Remove pavement markings that conflict with proposed temporary traffic markings before making any changes in traffic pattern. Do not use paint or bituminous bond coat to cover existing and inappropriate pavement markings. Tape may only be used with approval of the Engineer.

NOT TO SCALE

MICHIGAN DEPARTMENT OF TRANSPORTATION
BUREAU OF DEVELOPMENT STANDARD PLAN

(SPECIAL DETAIL)
F.H.W.A. APPROVAL

(SPECIAL DETAIL)
PLAN DATE

PAVE-904-A

SHEET
3 OF 3

NOTE: THE ORIGINAL SIGNED COPY IS KEPT ON FILE AT THE MICHIGAN DEPARTMENT OF TRANSPORTATION.