

KEY

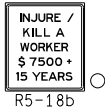
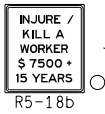
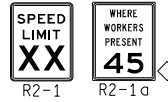
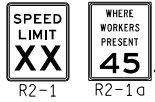
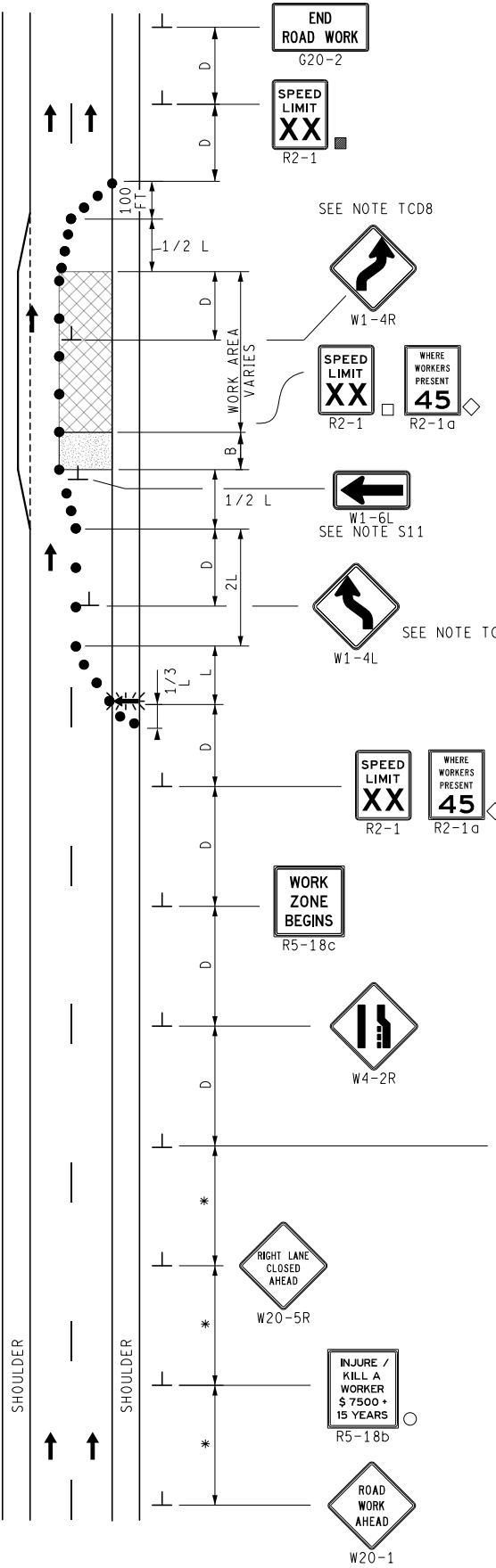
- CHANNELIZING DEVICES
- ⚡ LIGHTED ARROW PANEL
- ← TRAFFIC FLOW
- REFLECTS EXISTING SPEED LIMIT
- PLACE SIGN AS INDICATED IN NOTE S5
- PLACE SIGN AS INDICATED IN NOTE S2
- ◇ R2-1a OPTIONAL
- * PLACE SIGNS AT A SPACING OF D ON DIVIDED ROADWAYS AND 2D ON FREEWAYS

REMOVE EX PAVT MRKG
AND PLACE TEMP PAVT MRKG
AS DIRECTED BY THE ENGINEER

CHANNELEZING DEVICES ARE NOT REQUIRED
ON THE LEFT SIDE OF THE TRAVEL LANE,
WHEN TEMPORARY PAVEMENT MARKINGS ARE USED
TO DELINEATE THE EDGE LINE.

STANDARD NOTES
(SEE 102-GEN-NOTES)

GENERAL: G1, G2, G3, G5
SIGNING: S1, S2, S3, S5, S8, S11
DEVICES: TCD1, TCD2, TCD6, TCD8



NOT TO SCALE

MAINTAINING TRAFFIC TYPICAL

NO: 205-
FW-1LC-(R)-SHIFT

SINGLE LANE CLOSURE WITH SHIFT
ON A FREEWAY OR DIVIDED ROADWAY

DATE: MAY 2021
SHEET: