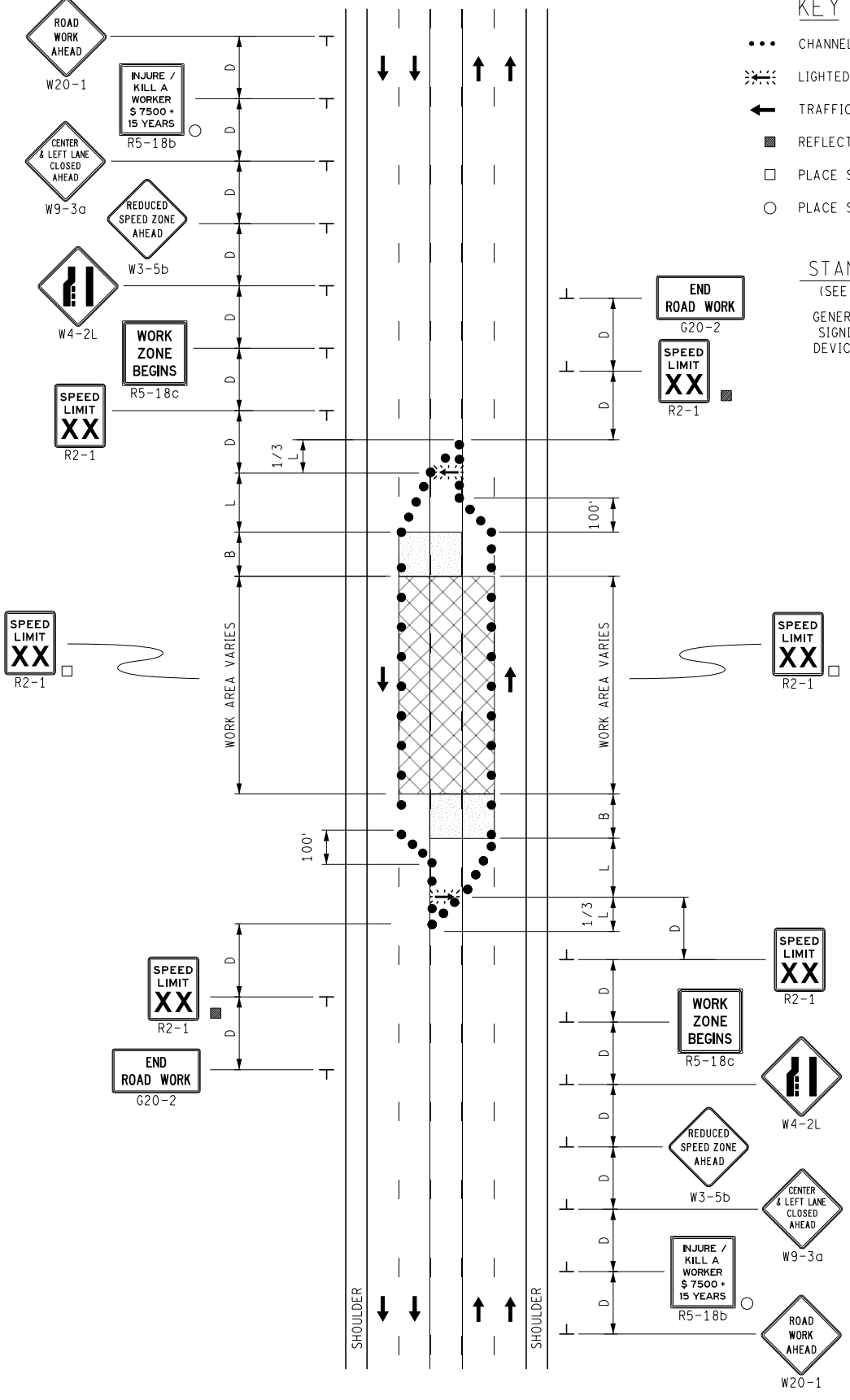


KEY

- CHANNELIZING DEVICES
- ⚡ LIGHTED ARROW PANEL
- ← TRAFFIC FLOW
- REFLECTS EXISTING SPEED LIMIT
- PLACE SIGN AS INDICATED IN NOTE S5
- PLACE SIGN AS INDICATED IN NOTE S2

STANDARD NOTES

(SEE 102-GEN-NOTES)
 GENERAL: G1, G2, G3, G4, G5
 SIGNING: S1, S2, S3, S5
 DEVICES: TCD1, TCD2, TCD6



NOT TO SCALE

MAINTAINING TRAFFIC TYPICAL

NO: 134-
CLT-2(L)LC-(IN)

LEFT LANES AND CENTER LANE CLOSURE
ON A 5-LANE UNDIVIDED ROADWAY

DATE: MAY 2021

SHEET: 1 OF 1