

KEY

••• CHANNELIZING DEVICES

← TRAFFIC FLOW

STANDARD NOTES

(SEE 102-GEN-NOTES)

GENERAL: G1, G2, G3, G4

SIGNING: S1

DEVICES: TCD1, TCD2

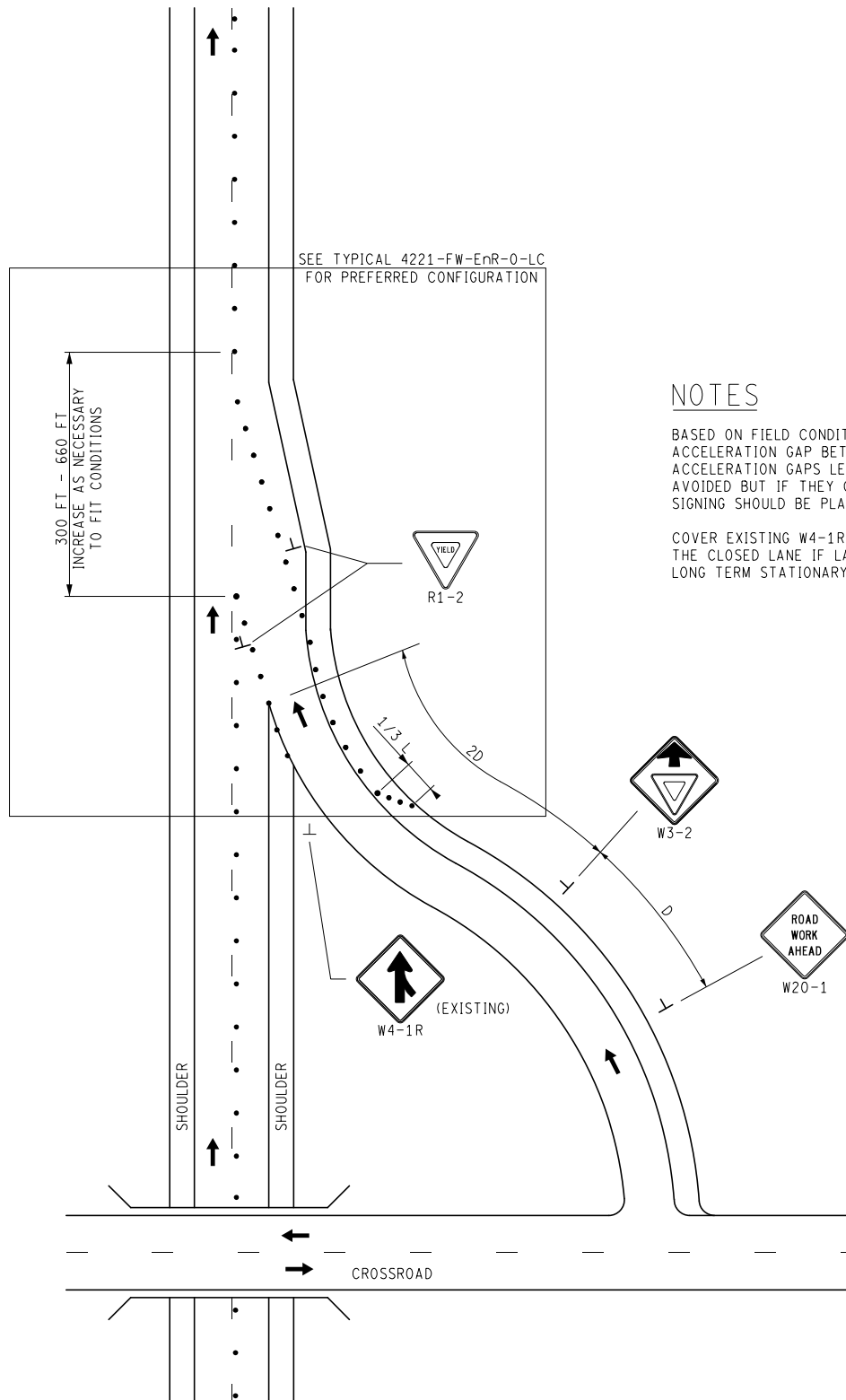
RAMP: RMP2

MAINT & SURV: MS2, MS3, MS4

NOTES

BASED ON FIELD CONDITIONS, PROVIDE AN ACCELERATION GAP BETWEEN 300 AND 660 FT. ACCELERATION GAPS LESS THAN 300 FT SHOULD BE AVOIDED BUT IF THEY CANNOT, THEN R1-1 (STOP) SIGNING SHOULD BE PLACED.

COVER EXISTING W4-1R SIGN AND POST A W4-1R SIGN IN THE CLOSED LANE IF LANE CLOSURE IS IN PLACE FOR A LONG TERM STATIONARY DURATION.



NOT TO SCALE



MAINTENANCE
MAINTAINING TRAFFIC
TYPICAL

DURATION:
LONG-TERM STATIONARY
INTERMEDIATE-TERM STATIONARY
SHORT-TERM STATIONARY

OUTSIDE LANE CLOSURE ON A FREEWAY
THROUGH ENTRANCE RAMP AREA
YIELD CONDITION

DATE:
MAY 2021

NO: 4222-FW
EnR-0-LC-YIELD

SHEET:
1 OF 1

FILE: 4222-FW-EnR-0-LC-YIELD.dgn