

KEY

 LIGHTED ARROW PANEL

 TRAFFIC FLOW

 SHADOW VEHICLE WITH OPTIONAL TRUCK MOUNTED ATTENUATOR

 WORK VEHICLE WITH OPTIONAL TRUCK MOUNTED ATTENUATOR

STANDARD NOTES

(SEE 102-GEN-NOTES)

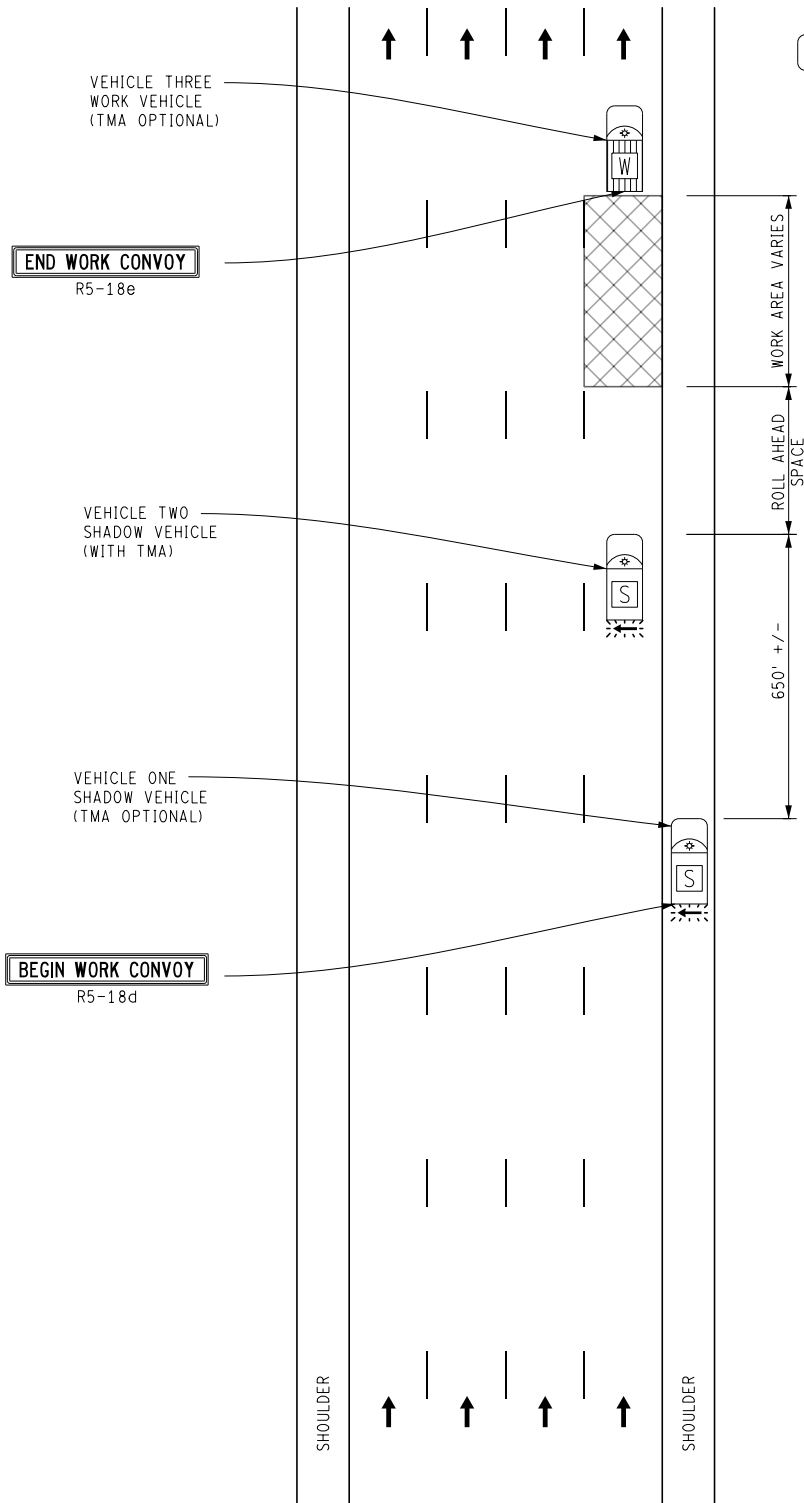
GENERAL: G1, G3, G4

SIGNING: S1

MAINT & SURV: MS1, MS2, MS3, MS4, MS5

NOTES

1. THIS TYPICAL ALSO MAY BE USED WHEN WORK IS BEING PERFORMED IN THE LANE ADJACENT TO THE MEDIAN OF THE ROADWAY. IN THIS CASE, THE "LEFT LANE CLOSED AHEAD" SIGNS SHALL BE SUBSTITUTED.



NOT TO SCALE

	MAINTENANCE MAINTAINING TRAFFIC TYPICAL	DURATION: SHORT-DURATION MOBILE	MOBILE OPERATION ON A MULTI-LANE ROADWAY	DATE: MAY 2021
				NO: 4421-M-FW-1LC
				SHEET: 1 OF 1

FILE: 4421-M-FW-1LC.dgn