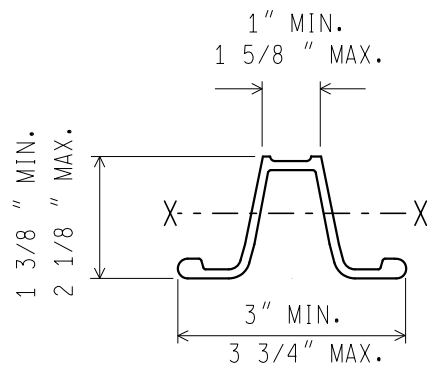


3 lbs STEEL POST

3 lbs STEEL POST WITH SPLICE

(OPTIONAL SPLICE DETAIL FOR POSTS GREATER THAN 16')



WEIGHT = 3 lbs/ft MIN.

SECTION MODULUS X-X = 0.31 in 3 MIN.



PREPARED BY  
TSMO DIVISION

DRAWN BY: JB

CHECKED BY: EO

DEPARTMENT DIRECTOR  
Paul C. Ajegba

APPROVED BY: Gregg Brunner, P.E. Director, Bureau of Field Services  
DIRECTOR, BUREAU OF FIELD SERVICES

APPROVED BY: Bradley C. Wieferich Director, Bureau of Development  
DIRECTOR, BUREAU OF DEVELOPMENT

MICHIGAN DEPARTMENT OF TRANSPORTATION  
BUREAU OF DEVELOPMENT STANDARD PLAN FOR

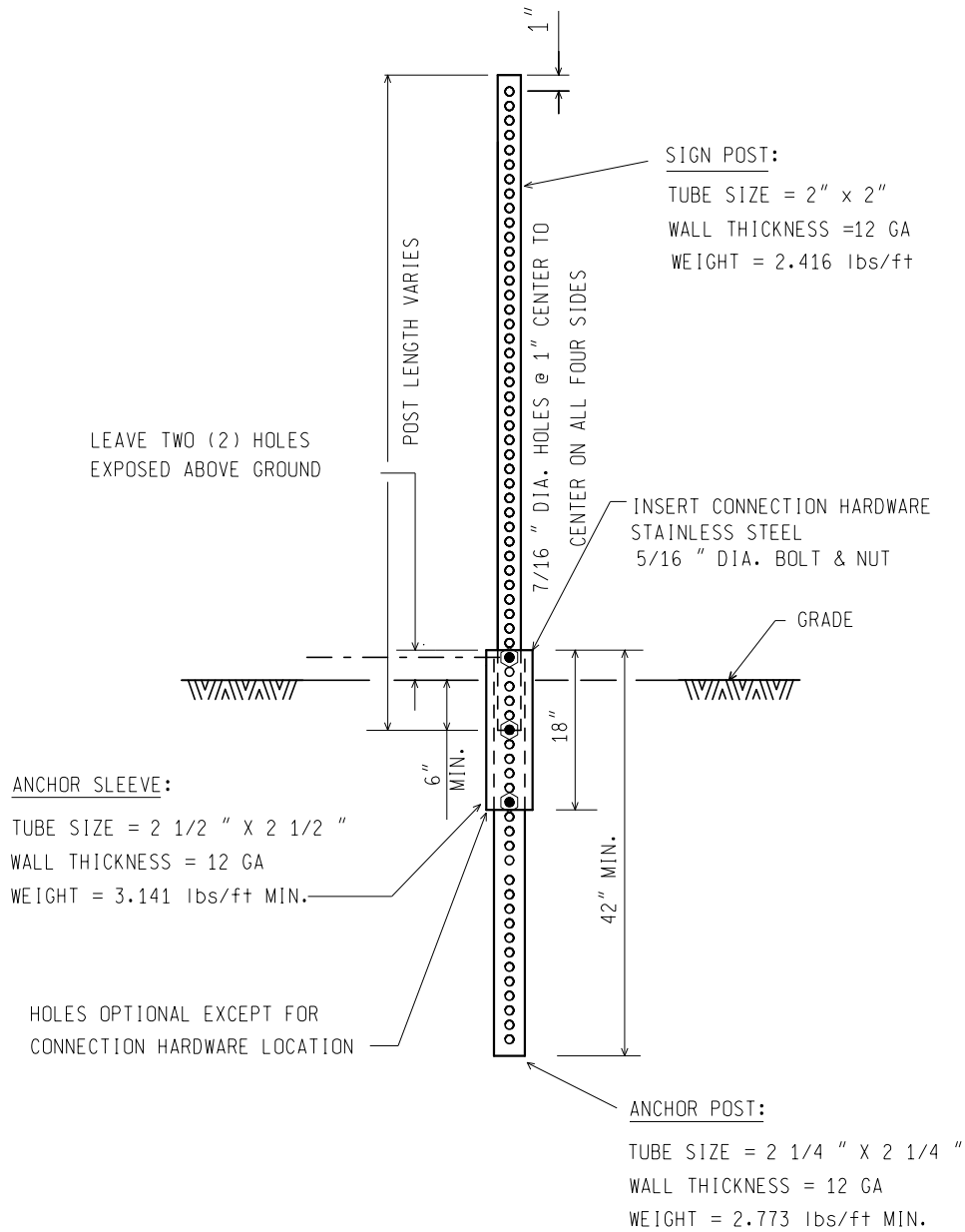
# STEEL POSTS

01/16/20  
F.H.W.A. APPROVAL

REV 8/24/20  
PLAN DATE

SIGN-200-E

SHEET  
1 OF 4



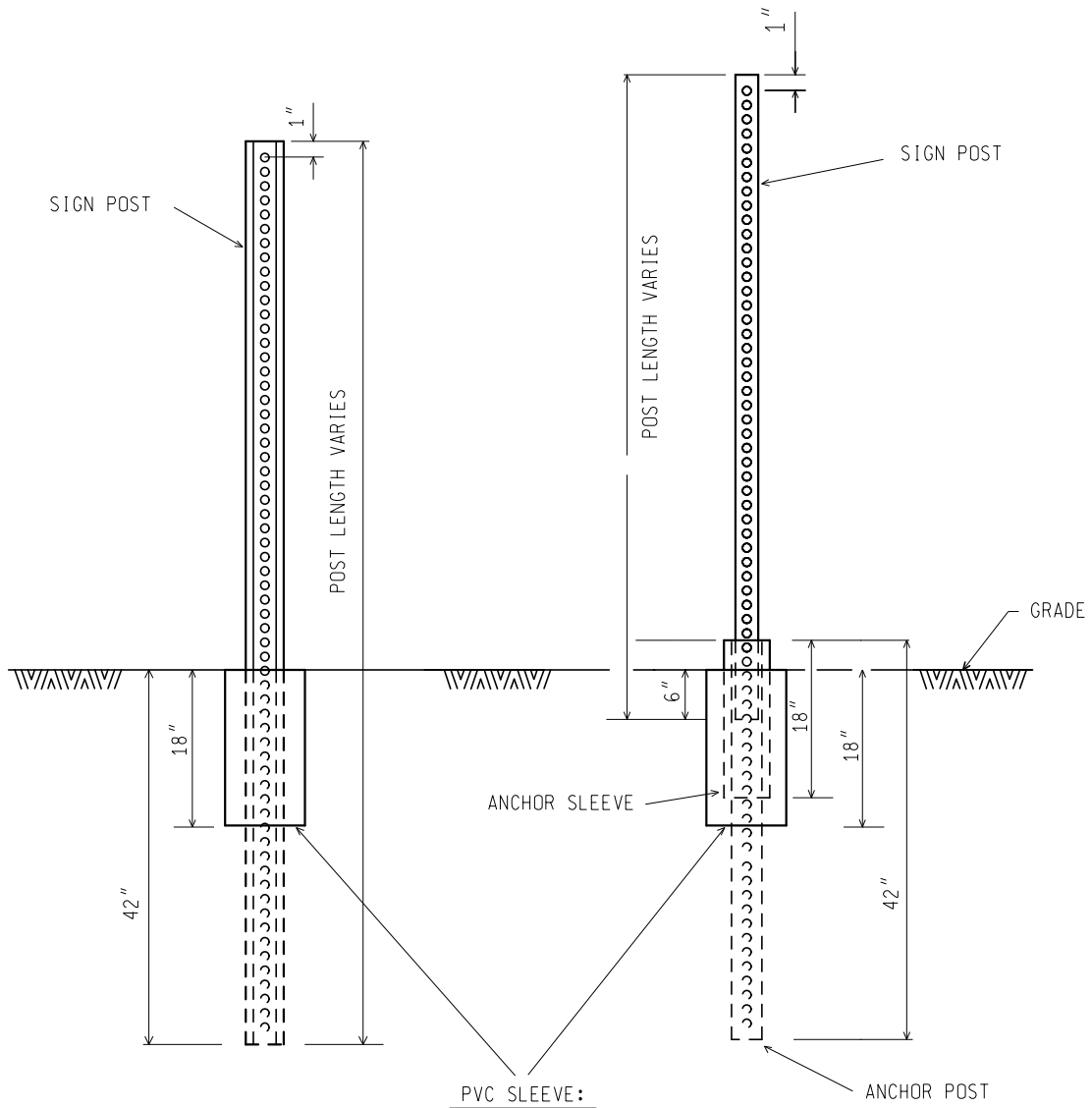
## SQUARE TUBULAR STEEL POST

NOTE: SQUARE TUBULAR STEEL POSTS ARE PRIMARILY INTENDED FOR USE IN URBAN AREAS, CHANNELIZATION ISLANDS AND OTHER SPECIFIED LOCATIONS REQUIRING MULTIPLE SIGN PANEL INSTALLATIONS.

NOT TO SCALE

MICHIGAN DEPARTMENT OF TRANSPORTATION BUREAU OF DEVELOPMENT STANDARD PLAN	01/16/20 F.H.W.A. APPROVAL	REV 8/24/20 PLAN DATE	SIGN-200-E	SHEET 2 OF 4
--	-------------------------------	--------------------------	------------	-----------------

NOTE: THE ORIGINAL SIGNED COPY IS KEPT ON FILE AT THE MICHIGAN DEPARTMENT OF TRANSPORTATION.



PVC SLEEVE:  
 TUBE SIZE = 5" DIAMETER  
 PVC OR OTHER MATERIAL  
 BACKFILL WITH SAND &  
 SEAL WITH SILICONE SEALER  
 USED FOR BOTH 3 lbs &  
 SQUARE TUBULAR STEEL POSTS

## STEEL POST THROUGH CONCRETE

NOT TO SCALE

MICHIGAN DEPARTMENT OF TRANSPORTATION  
 BUREAU OF DEVELOPMENT STANDARD PLAN

01/16/20  
 F.H.W.A. APPROVAL

REV 8/24/20  
 PLAN DATE

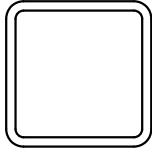
SIGN-200-E

SHEET  
 3 OF 4

NOTE: THE ORIGINAL SIGNED COPY IS KEPT ON FILE AT THE MICHIGAN DEPARTMENT OF TRANSPORTATION.

TABLE 1

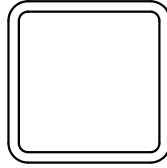
ELEMENTS OF SECTION



2" x 2"

SECTION PROPERTIES

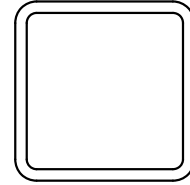
A = 0.5090 in<sup>2</sup>  
 I = 0.372 in<sup>4</sup>  
 S = 0.372 in<sup>3</sup>  
 r = 0.794 in



2 1/4 " x 2 1/4 "

SECTION PROPERTIES

A = 0.695 in<sup>2</sup>  
 I = 0.561 in<sup>4</sup>  
 S = 0.499 in<sup>3</sup>  
 r = 0.898 in



2 1/2 " x 2 1/2 "

SECTION PROPERTIES

A = 0.803 in<sup>2</sup>  
 I = 0.804 in<sup>4</sup>  
 S = 0.643 in<sup>3</sup>  
 r = 1.001 in

TOLERANCES

- |   |                         |
|---|-------------------------|
| 1. OUTSIDE TOLERANCE FOR ALL SIDES AT CORNERS | ± 0.01 in               |
| 2. WALL THICKNESS                             | -0.008 in TO + 0.011 in |
| 3. CONVEXITY AND CONCAVITY                    | ± 0.01 in               |
| 4. SQUARENESS OF SIDES                        | ± 0.14 in               |
| 5. TWIST PERMISSIBLE IN 3 in LENGTH           | 0.062 in                |
| 6. STRAIGHTNESS                               | 1/16 in IN 3 ft         |
| 7. CORNER RADII                               | 5/32 in ± 1/32 in       |
| 8. LENGTH                                     | ± 1/4 in                |

NOTES:

1. POST SHALL BE GALVANIZED EXCEPT ON TEMPORARY CONSTRUCTION SIGNS.
2. BOLTS & NYLON INSERT LOCK NUTS SHALL BE STAINLESS STEEL, PER CURRENT MDOT STANDARD SPECIFICATIONS FOR CONSTRUCTION.
3. SEE SIGN-740-SERIES-ENG FOR SIGN CONNECTION.
4. POSTS SHALL BE MARKED AT THE 42" POINT WITH SPRAY PAINT PRIOR TO DRIVING TO INDICATE MINIMUM EMBEDMENT.
5. POSTS WILL BE MEASURED FOR PAYMENT TO THE NEAREST COMMERCIAL LENGTH.
6. SELF-ALIGNING STEEL SIGN REINFORCING PLATE (SEE SIGN-740-SERIES-ENG) REQUIRED FOR USE WITH ALL TYPE III (SHEET STEEL OR ALUMINUM) SIGNS INSTALLED ON 3 lbs. SELF-ALIGNING STEEL SIGN REINFORCING PLATE IS NOT TO BE USED WITH SQUARE TUBULAR STEEL POSTS.
7. MAXIMUM SIGN SQUARE FOOT FOR 1-3 LB. POST SHALL BE 8 SQUARE FEET.
8. MAXIMUM SIGN SQUARE FOOT FOR 2-3 LB. POST SHALL BE EQUAL TO THE 2-3 LB. STEEL POST PER SIGN-150-SERIES.
9. STEEL POSTS PLACED IN CONCRETE SHALL UTILIZE A 5" DIAMETER SLEEVE AT MINIMUM.

NOT TO SCALE

MICHIGAN DEPARTMENT OF TRANSPORTATION  
 BUREAU OF DEVELOPMENT STANDARD PLAN

01/16/20  
 F.H.W.A. APPROVAL

REV 8/24/20  
 PLAN DATE

SIGN-200-E

SHEET  
 4 OF 4