


KEY

- CHANNELIZING DEVICES
- ⚡ ARROW PANEL
- ← TRAFFIC FLOW
-  WORK VEHICLE WITH FLASHING OR ROTATING LIGHTS

STANDARD NOTES

(SEE 102-GEN-NOTES)

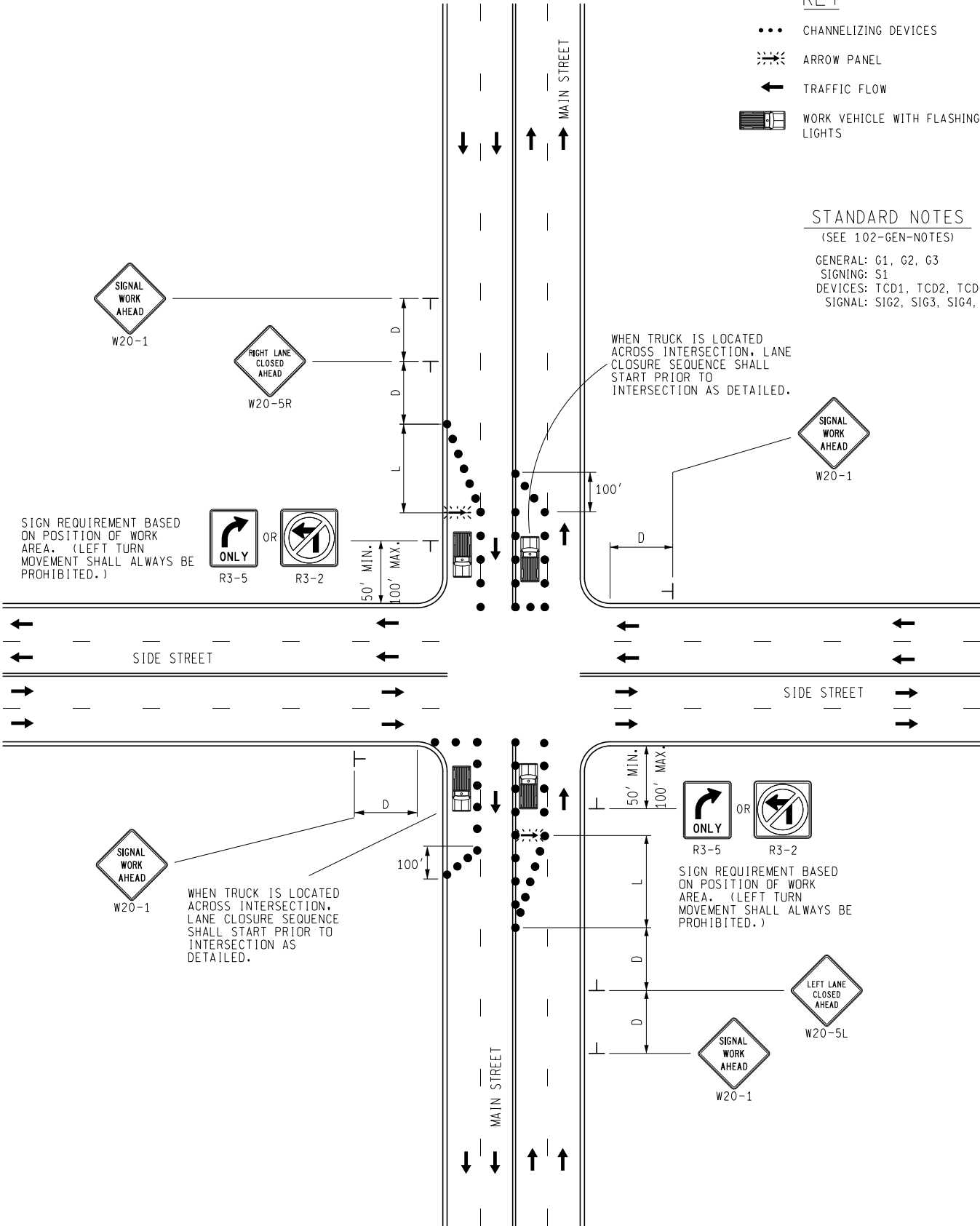
GENERAL: G1, G2, G3

SIGNING: S1

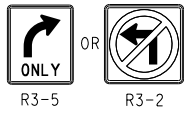
DEVICES: TCD1, TCD2, TCD6

SIGNAL: SIG2, SIG3, SIG4, SIG5

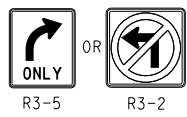
WHEN TRUCK IS LOCATED ACROSS INTERSECTION, LANE CLOSURE SEQUENCE SHALL START PRIOR TO INTERSECTION AS DETAILED.



SIGN REQUIREMENT BASED ON POSITION OF WORK AREA. (LEFT TURN MOVEMENT SHALL ALWAYS BE PROHIBITED.)



50' MIN.
100' MAX.



SIGN REQUIREMENT BASED ON POSITION OF WORK AREA. (LEFT TURN MOVEMENT SHALL ALWAYS BE PROHIBITED.)

WHEN TRUCK IS LOCATED ACROSS INTERSECTION, LANE CLOSURE SEQUENCE SHALL START PRIOR TO INTERSECTION AS DETAILED.