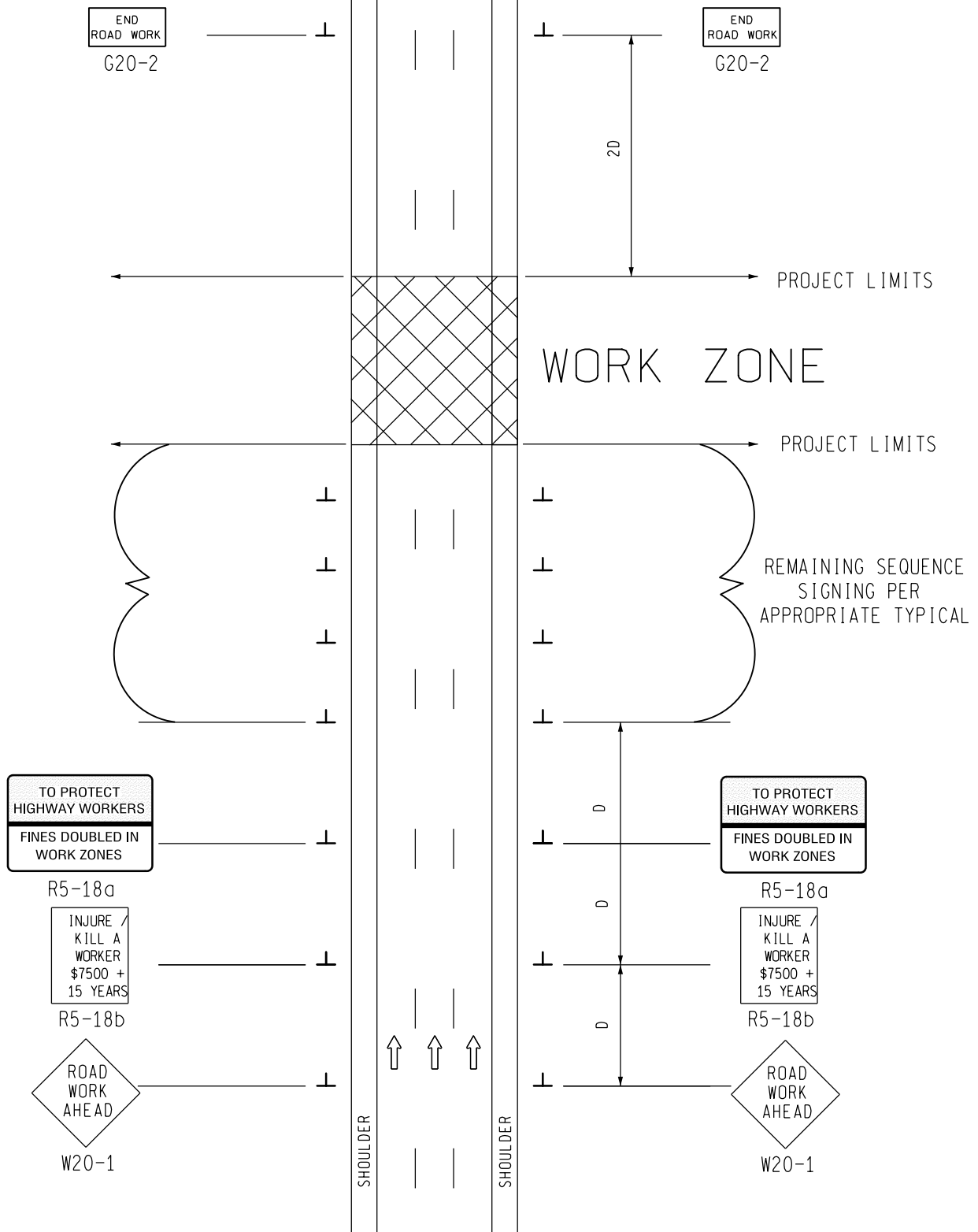


SIGN PLACEMENT IS THE SAME FOR BOTH DIRECTIONS



SIGN = 136 ft± - TYPE B  
 FOR ONE DIRECTION OF TRAFFIC  
 W20-1 QUANTITY INCLUDED WITH  
 APPROPRIATE TYPICAL FOR  
 SEQUENCE SIGNING

**MDOT**  
 Michigan Department of Transportation  
 TRAFFIC AND SAFETY  
 MAINTAINING TRAFFIC  
 TYPICAL

TYPICAL ADVANCE SIGNING TREATMENT FOR  
 LONG, INTERMEDIATE AND SHORT TERM  
 STATIONARY WORK ZONE OPERATIONS  
 OF LESS THAN TWO MILES IN LENGTH WHERE  
 TRAFFIC CONTROL DEVICES MAY REMAIN AT  
 END OF WORK DAY ON A DIVIDED ROADWAY.

DRAWN BY: CON:AE:djf	OCTOBER 2011	M0070a	SHEET 1 OF 2
CHECKED BY: BMM:CRB	PLAN DATE:		
FILE: PW RD/TS/Typicals/Signs/MT NON FWY/M0070a.dgn REV. 10/13/2011			


NOT TO SCALE

## NOTES

- 30. THE APPROPRIATE ADVANCE SIGNING SEQUENCE(S), (M0030a THROUGH M0080a) SHALL BE USED ON ALL PROJECTS.
- 32. THESE SIGNS SHALL BE LEFT IN PLACE AT THEIR PRESCRIBED LOCATIONS FOR THE DURATION OF THE PROJECT AND UNTIL ALL TEMPORARY TRAFFIC CONTROL HAS BEEN REMOVED.
- 35. THESE SIGNS ARE INTENDED TO BE USED WITHIN THE LIMITS OF THE TEMPORARY SEQUENCE SIGNING AS IS SHOWN ON 1 OF 2. THESE SIGNS ARE NOT TO BE INTERMINGLED WITH ANY OTHER TEMPORARY SEQUENCE SIGNING EXCEPT AS SHOWN.

### SIGN SIZES

G20-2	-	48" x 24"
R5-18a	-	96" x 60"
R5-18b	-	48" x 60"
W20-1	-	48" x 48"

 <b>MDOT</b> Michigan Department of Transportation TRAFFIC AND SAFETY MAINTAINING TRAFFIC TYPICAL	TYPICAL ADVANCE SIGNING TREATMENT FOR LONG, INTERMEDIATE AND SHORT TERM STATIONARY WORK ZONE OPERATIONS OF LESS THAN TWO MILES IN LENGTH WHERE TRAFFIC CONTROL DEVICES MAY REMAIN AT END OF WORK DAY ON A DIVIDED ROADWAY.		
	DRAWN BY: CON:AE:djf	OCTOBER 2011	M0070a
CHECKED BY: BMM:CRB	PLAN DATE:	2 OF 2	
FILE: PW RD/TS/Typicals/Signs/MT NON FWY/M0070a.dgn REV. 10/13/2011			

NOT TO SCALE