

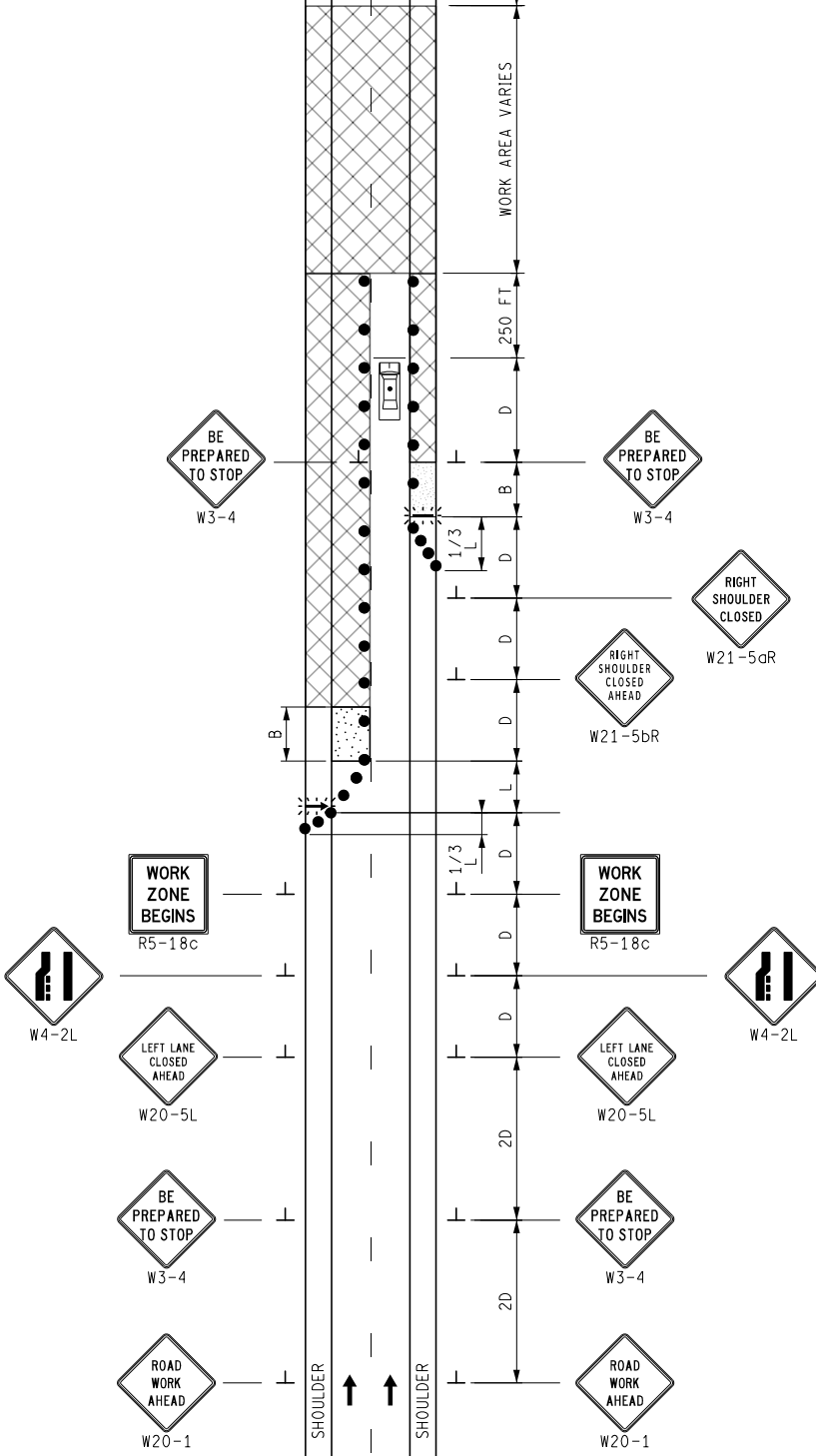
KEY

- CHANNELIZING DEVICES
- ⚡ LIGHTED ARROW PANEL
- ← TRAFFIC FLOW
- REFLECTS EXISTING SPEED LIMIT
- 🚓 POLICE VEHICLE WITH LIGHT BAR OR CONSTRUCTION VEHICLE WITH PERMANENTLY AFFIXED ROTATING BEACON OR STROBE LIGHT

STANDARD NOTES

(SEE 102-GEN-NOTES)

GENERAL: G1, G2, G3, G4
 SIGNING: S1, S2, S3, S4, S5, S6
 TRAF REG: TR1, TR2
 DEVICES TCD1, TCD2, TCD10



PORTABLE CHANGEABLE MESSAGE SIGN (PCMS)

PORTABLE CHANGEABLE MESSAGE SIGN (PCMS)
 PLACED BEYOND BACKUP AND STAGGERED 1000 FT



NOT TO SCALE

MAINTAINING TRAFFIC TYPICAL

NO: 361-SP-ROLL-LC

**ROLLING ROADBLOCK
 ON A TWO LANE FREEWAY
 WITH A LANE CLOSURE**

DATE: MAY 2021
 SHEET:

1 OF 1