

KEY

- CHANNELIZING DEVICES
- ← LIGHTED ARROW PANEL
- TRAFFIC FLOW
- REFLECTS EXISTING SPEED LIMIT
- ▲ SEE SHEET 3 OF 3

SIGN = 312 ft±2 - TYPE B
PLUS ADDITIONAL SPEED LIMIT
SIGNING THROUGHOUT WORK AREA

END ROAD WORK
PLACE THIS SIGN ALONG WITH THE ADVANCE WORK ZONE SIGNING AS DEPICTED ON THE APPROPRIATE TYPICAL M0030a-M0080a.

SPEED LIMIT XX WHERE WORKERS PRESENT 45
R2-1 R2-1a
PLACE ADDITIONAL SUPPLEMENTAL SETS OF SPEED LIMIT SIGNS THROUGHOUT THE WORK AREA AS DEPICTED ON TYPICAL M0090a.

WHERE WORKERS PRESENT 45
R2-1a

SPEED LIMIT XX
R2-1

A MATCH A

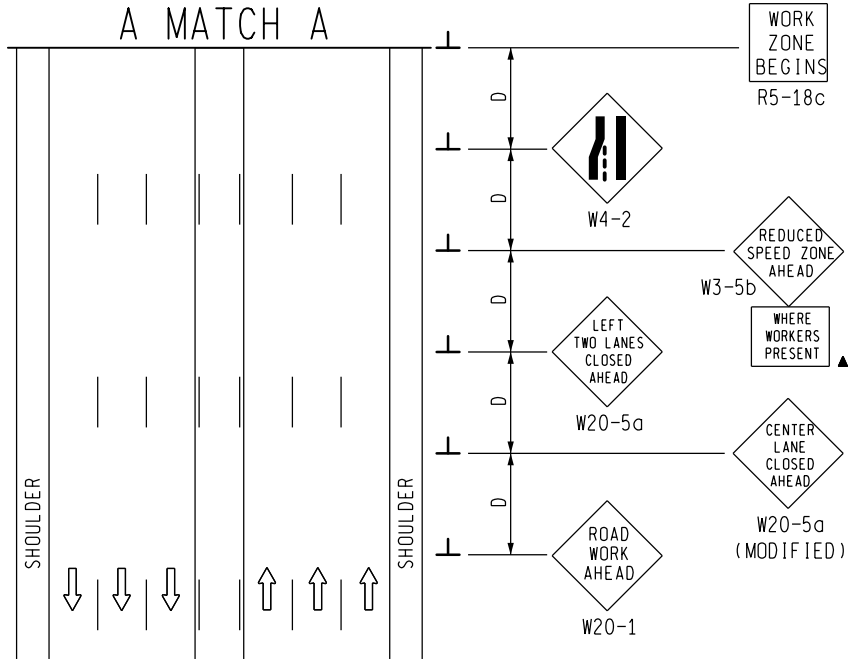
<p>TRAFFIC AND SAFETY MAINTAINING TRAFFIC TYPICAL</p>		<p>TYPICAL TEMPORARY TRAFFIC CONTROL FOR CLOSING FOUR LANES (THREE THROUGH LANES AND CENTER LANE FOR LEFT TURN ONLY) ON A SEVEN LANE UNDIVIDED ROADWAY USING A REDUCED SPEED LIMIT WHERE WORKERS PRESENT</p>	
DRAWN BY: CON:AE:djf CHECKED BY: BMM:CRB	OCTOBER 2011 PLAN DATE:	M0600a	SHEET 1 OF 3
FILE: PW RD/TS/Typicals/Signs/MT NON FWY/M0600a.dgn REV. 10/25/2011			

NOT TO SCALE

A MATCH A

END ROAD WORK

PLACE THIS SIGN ALONG WITH THE ADVANCE WORK ZONE SIGNING AS DEPICTED ON THE APPROPRIATE TYPICAL M0030a-M0080a.

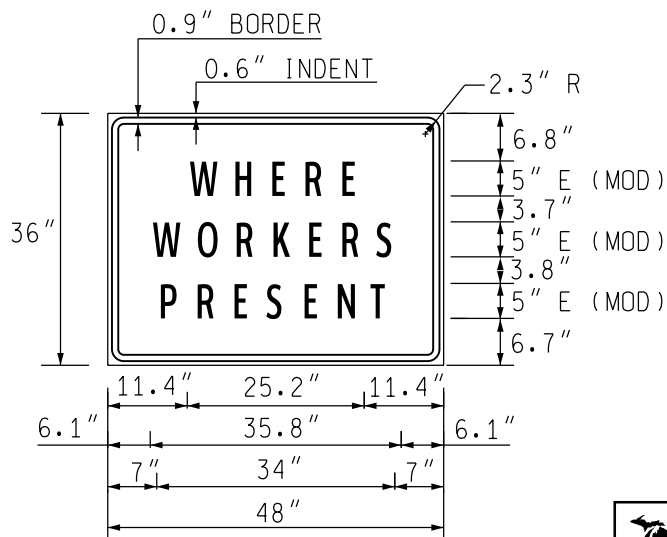


<p>TRAFFIC AND SAFETY MAINTAINING TRAFFIC TYPICAL</p>	<p>TYPICAL TEMPORARY TRAFFIC CONTROL FOR CLOSING FOUR LANES (THREE THROUGH LANES AND CENTER LANE FOR LEFT TURN ONLY) ON A SEVEN LANE UNDIVIDED ROADWAY USING A REDUCED SPEED LIMIT WHERE WORKERS PRESENT</p>	
	<p>DRAWN BY: CON:AE:djf CHECKED BY: BMM:CRB</p>	<p>OCTOBER 2011 PLAN DATE:</p>
<p>FILE: PW RD/TS/Typicals/Signs/MT NON FWY/M0600a.dgn REV. 10/25/2011</p>		

NOT TO SCALE

NOTES

- 1J. D = DISTANCE BETWEEN TRAFFIC CONTROL DEVICES
AND LENGTH OF LONGITUDINAL BUFFERS
L & 1/3 L = MINIMUM LENGTH OF TAPER
SEE **M0020a** FOR "D" AND "L" VALUES
2. ALL NON-APPLICABLE SIGNING WITHIN THE CIA SHALL BE MODIFIED TO FIT CONDITIONS, COVERED OR REMOVED.
3. DISTANCES BETWEEN SIGNS, THE VALUES FOR WHICH ARE SHOWN IN TABLE D, ARE APPROXIMATE AND MAY NEED ADJUSTING AS DIRECTED BY THE ENGINEER.
- 3A. THE "WORK ZONE BEGINS" (R5-18c) SIGN SHALL BE USED ONLY IN THE INITIAL SIGNING SEQUENCE IN THE WORK ZONE. SUBSEQUENT SEQUENCES IN THE SAME WORK ZONE SHALL OMIT THIS SIGN AND THE QUANTITIES SHALL BE ADJUSTED APPROPRIATELY.
- 4D. THE SPACING OF CHANNELIZING DEVICES SHOULD NOT EXCEED 45 FEET WHEN USED FOR TAPER CHANNELIZATION, AND SHOULD NOT EXCEED 90 FEET WHEN USED FOR TANGENT CHANNELIZATION.
5. FOR OVERNIGHT CLOSURES, TYPE III BARRICADES SHALL BE LIGHTED.
6. WHEN CALLED FOR IN THE FHWA ACCEPTANCE LETTER FOR THE SIGN SYSTEM SELECTED, THE TYPE A WARNING FLASHER, SHOWN ON THE WARNING SIGNS, SHALL BE POSITIONED ON THE SIDE OF THE SIGN NEAREST THE ROADWAY.
7. ALL TEMPORARY SIGNS, TYPE III BARRICADES, THEIR SUPPORT SYSTEMS AND LIGHTING REQUIREMENTS SHALL MEET NCHRP 350 CRASHWORTHY REQUIREMENTS STIPULATED IN THE CURRENT EDITION OF THE MICHIGAN MANUAL ON UNIFORM TRAFFIC CONTROL DEVICES, THE CURRENT EDITION OF THE STANDARD SPECIFICATIONS FOR CONSTRUCTION, THE STANDARD PLANS AND APPLICABLE SPECIAL PROVISIONS. ONLY DESIGNS AND MATERIALS APPROVED BY MDOT WILL BE ALLOWED.
8. WHEN BUFFER AREAS ARE ESTABLISHED, THERE SHALL BE NO EQUIPMENT OR MATERIALS STORED OR WORK CONDUCTED IN THE BUFFER AREA.
21. ALL EXISTING PAVEMENT MARKINGS WHICH ARE IN CONFLICT WITH EITHER PROPOSED CHANGES IN TRAFFIC PATTERNS OR PROPOSED TEMPORARY TRAFFIC MARKINGS, SHALL BE REMOVED BEFORE ANY CHANGE IS MADE IN THE TRAFFIC PATTERN. EXCEPTION WILL BE MADE FOR DAYTIME-ONLY TRAFFIC PATTERNS THAT ARE ADEQUATELY DELINEATED BY OTHER TRAFFIC CONTROL DEVICES.
- 26C. THE LIGHTED ARROW PANEL SHALL BE LOCATED AT THE BEGINNING OF THE MERGING TAPER AS SHOWN. WHEN PHYSICAL LIMITATIONS RESTRICT ITS PLACEMENT AS INDICATED, THEN IT SHALL BE PLACED AS CLOSE TO THE BEGINNING OF THE MERGING TAPER AS POSSIBLE.
- 29D. THE TYPE OF REFLECTIVE SHEETING USED FOR THE "WHERE WORKERS PRESENT" PLAQUE SHALL BE THE SAME AS THE TYPE USED FOR THE PARENT SIGN.




COLORS

LEGEND AND BORDER - BLACK (NON-REFLECTORIZED)
BACKGROUND - ORANGE (REFLECTORIZED)

SIGN SIZES

DIAMOND WARNING	- 48" x 48"
"WORKERS PRESENT" PLAQUE	- 48" x 36"
RECTANGULAR REGULATORY	- 48" x 60"
R5-18c REGULATORY	- 48" x 48"

 TRAFFIC AND SAFETY MAINTAINING TRAFFIC TYPICAL	TYPICAL TEMPORARY TRAFFIC CONTROL FOR CLOSING FOUR LANES (THREE THROUGH LANES AND CENTER LANE FOR LEFT TURN ONLY) ON A SEVEN LANE UNDIVIDED ROADWAY USING A REDUCED SPEED LIMIT WHERE WORKERS PRESENT		
	DRAWN BY: CON:AE:djf	OCTOBER 2011	M0600a
CHECKED BY: BMM:CRB	PLAN DATE:	3 OF 3	
FILE: PW RD/TS/Typicals/Signs/MT NON Fwy/M0600a.dgn REV. 10/25/2011			

NOT TO SCALE