

PLACE ADDITIONAL SUPPLEMENTAL SETS OF SPEED LIMIT SIGNS THROUGHOUT THE WORK AREA AS DEPICTED ON TYPICAL M0100a.

PLACE ADDITIONAL SUPPLEMENTAL SETS OF SPEED LIMIT SIGNS THROUGHOUT THE WORK AREA AS DEPICTED ON TYPICAL M0100a.

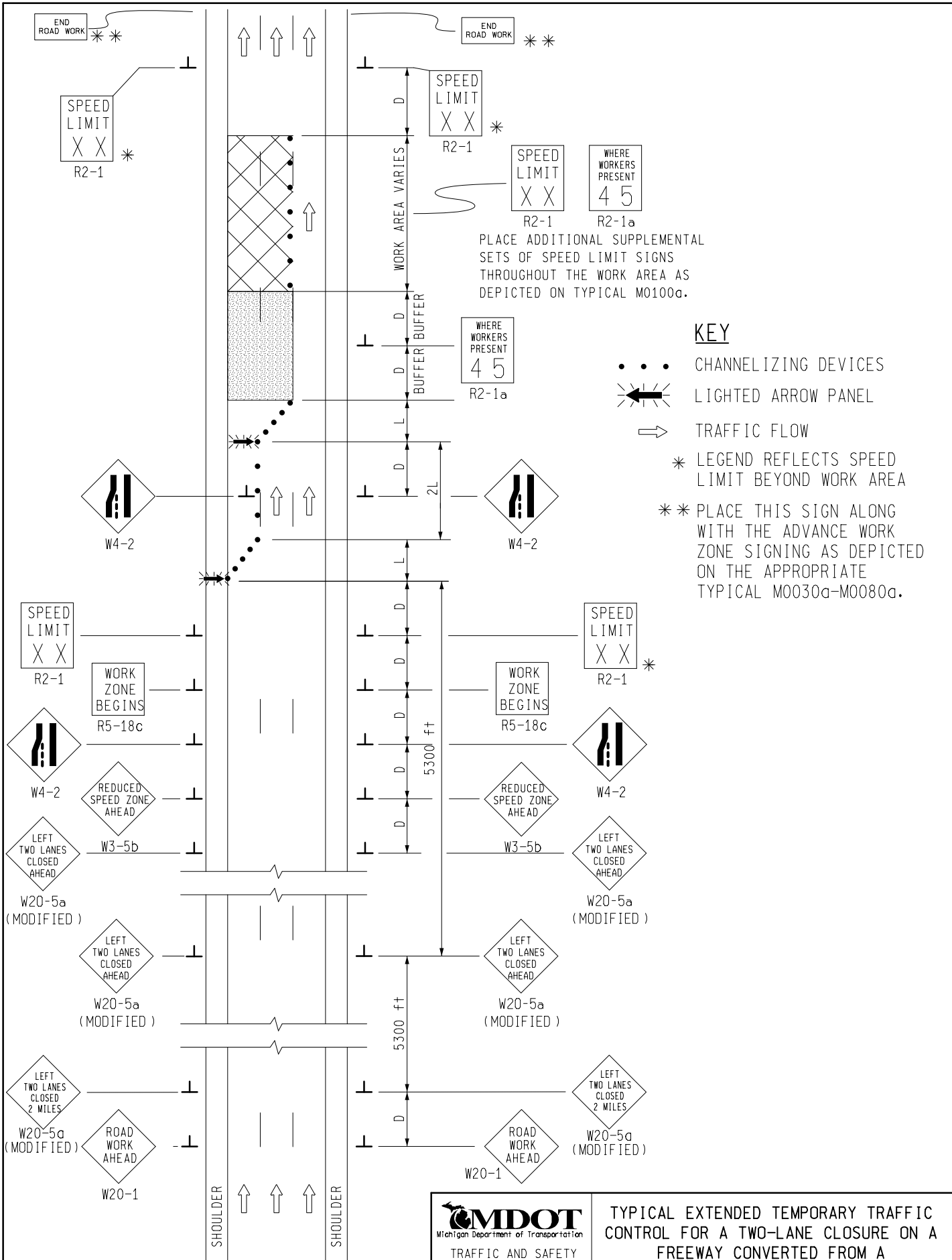
KEY

- • • CHANNELIZING DEVICES
- ← LIGHTED ARROW PANEL
- ⇒ TRAFFIC FLOW
- ☒ PLACE THROUGHOUT WORK AREA AS INDICATED IN THE NOTES.
- * LEGEND REFLECTS SPEED LIMIT BEYOND WORK AREA
- ** PLACE THIS SIGN ALONG WITH THE ADVANCE WORK ZONE SIGNING AS DEPICTED ON THE APPROPRIATE TYPICAL M0030a-M0080a.

**SIGN = 472 ft ± 2 - TYPE B
TOTAL FOR BOTH STAGES
PLUS ADDITIONAL SPEED
LIMIT SIGNING THROUGHOUT
WORK AREA**


<p>TRAFFIC AND SAFETY MAINTAINING TRAFFIC TYPICAL</p>		<p>TYPICAL EXTENDED TEMPORARY TRAFFIC CONTROL FOR A ONE-LANE CLOSURE ON A FREEWAY THAT CAN BE CONVERTED TO A TWO-LANE CLOSURE USING A REDUCED SPEED LIMIT WHERE WORKERS PRESENT</p>	
DRAWN BY: CON:AE:djf CHECKED BY: BMM:CRB	OCTOBER 2011 PLAN DATE:	M1290a	SHEET 1 OF 3
FILE: PW RD/TS/Typicals/Signs/MT FWY/M1290a.dgn		REV. 10/26/2011	

NOT TO SCALE



KEY

- • • CHANNELIZING DEVICES
- ← LIGHTED ARROW PANEL
- ⇒ TRAFFIC FLOW
- * LEGEND REFLECTS SPEED LIMIT BEYOND WORK AREA
- ** PLACE THIS SIGN ALONG WITH THE ADVANCE WORK ZONE SIGNING AS DEPICTED ON THE APPROPRIATE TYPICAL M0030a-M0080a.

 MICHIGAN DEPARTMENT OF TRANSPORTATION TRAFFIC AND SAFETY		TYPICAL EXTENDED TEMPORARY TRAFFIC CONTROL FOR A TWO-LANE CLOSURE ON A FREEWAY CONVERTED FROM A ONE-LANE CLOSURE USING A REDUCED SPEED LIMIT WHERE WORKERS PRESENT	
MAINTAINING TRAFFIC TYPICAL		M1290a	
DRAWN BY: CON:AE:djf CHECKED BY: BMM:CRB		OCTOBER 2011 PLAN DATE:	
FILE: PW RD/TS/Typicals/Signs/MT FWY/M1290a.dgn		SHEET 2 OF 3 REV. 10/26/2011	

NOT TO SCALE


NOTES

11. D = DISTANCE BETWEEN TRAFFIC CONTROL DEVICES
AND LENGTH OF LONGITUDINAL BUFFERS
L = MINIMUM LENGTH OF TAPER
SEE **M0020a** FOR "D" AND "L" VALUES
2. ALL NON-APPLICABLE SIGNING WITHIN THE CIA SHALL BE MODIFIED TO FIT CONDITIONS, COVERED OR REMOVED.
3. DISTANCES BETWEEN SIGNS, THE VALUES FOR WHICH ARE SHOWN IN TABLE D, ARE APPROXIMATE AND MAY NEED ADJUSTING AS DIRECTED BY THE ENGINEER.
- 3A. THE "WORK ZONE BEGINS" (R5-18c) SIGN SHALL BE USED ONLY IN THE INITIAL SIGNING SEQUENCE IN THE WORK ZONE. SUBSEQUENT SEQUENCES IN THE SAME WORK ZONE SHALL OMIT THIS SIGN AND THE QUANTITIES SHALL BE ADJUSTED APPROPRIATELY.
- 4D. THE SPACING OF CHANNELIZING DEVICES SHOULD NOT EXCEED 45 FEET WHEN USED FOR TAPER CHANNELIZATION, AND SHOULD NOT EXCEED 90 FEET WHEN USED FOR TANGENT CHANNELIZATION.
5. FOR OVERNIGHT CLOSURES, TYPE III BARRICADES SHALL BE LIGHTED.
6. WHEN CALLED FOR IN THE FHWA ACCEPTANCE LETTER FOR THE SIGN SYSTEM SELECTED, THE TYPE A WARNING FLASHER, SHOWN ON THE WARNING SIGNS, SHALL BE POSITIONED ON THE SIDE OF THE SIGN NEAREST THE ROADWAY.
7. ALL TEMPORARY SIGNS, TYPE III BARRICADES, THEIR SUPPORT SYSTEMS AND LIGHTING REQUIREMENTS SHALL MEET NCHRP 350 CRASHWORTHLY REQUIREMENTS STIPULATED IN THE CURRENT EDITION OF THE MICHIGAN MANUAL ON UNIFORM TRAFFIC CONTROL DEVICES, THE CURRENT EDITION OF THE STANDARD SPECIFICATIONS FOR CONSTRUCTION, THE STANDARD PLANS AND APPLICABLE SPECIAL PROVISIONS. ONLY DESIGNS AND MATERIALS APPROVED BY MDOT WILL BE ALLOWED.
8. WHEN BUFFER AREAS ARE ESTABLISHED, THERE SHALL BE NO EQUIPMENT OR MATERIALS STORED OR WORK CONDUCTED IN THE BUFFER AREA.
- 16B. WHEN REDUCED SPEED LIMITS ARE UTILIZED IN THE WORK AREA, ADDITIONAL SPEED LIMIT SIGNS RETURNING TRAFFIC TO ITS NORMAL SPEED SHALL BE PLACED BEYOND THE LIMITS OF THE REDUCED SPEED AS INDICATED.
21. ALL EXISTING PAVEMENT MARKINGS WHICH ARE IN CONFLICT WITH EITHER PROPOSED CHANGES IN TRAFFIC PATTERNS OR PROPOSED TEMPORARY TRAFFIC MARKINGS, SHALL BE REMOVED BEFORE ANY CHANGE IS MADE IN THE TRAFFIC PATTERN. EXCEPTION WILL BE MADE FOR DAYTIME-ONLY TRAFFIC PATTERNS THAT ARE ADEQUATELY DELINEATED BY OTHER TRAFFIC CONTROL DEVICES.
26. THE LIGHTED ARROW PANEL SHALL BE LOCATED AT THE BEGINNING OF THE TAPER AS SHOWN. WHEN PHYSICAL LIMITATIONS RESTRICT ITS PLACEMENT AS INDICATED, THEN IT SHALL BE PLACED AS CLOSE TO THE BEGINNING OF THE TAPER AS POSSIBLE.

SIGN SIZES

DIAMOND WARNING - 48" x 48"
 RECTANGULAR REGULATORY - 48" x 60"
 R5-18c REGULATORY - 48" x 48"

NOT TO SCALE

 Michigan Department of Transportation TRAFFIC AND SAFETY MAINTAINING TRAFFIC TYPICAL	TYPICAL EXTENDED TEMPORARY TRAFFIC CONTROL FOR A ONE-LANE CLOSURE ON A FREEWAY THAT CAN BE CONVERTED TO A TWO-LANE CLOSURE USING A REDUCED SPEED LIMIT WHERE WORKERS PRESENT		
DRAWN BY: CON:AE:djf	OCTOBER 2011	M1290a	SHEET
CHECKED BY: BMM:CRB	PLAN DATE:		3 OF 3
FILE: PW RD/TS/Typicals/Signs/MT FWY/M1290a.dgn		REV.	10/26/2011