

KEY

- CHANNELIZING DEVICES
- ⚡ LIGHTED ARROW PANEL (CAUTION MODE)
- ← TRAFFIC FLOW
- ⊥ TRAFFIC REGULATOR

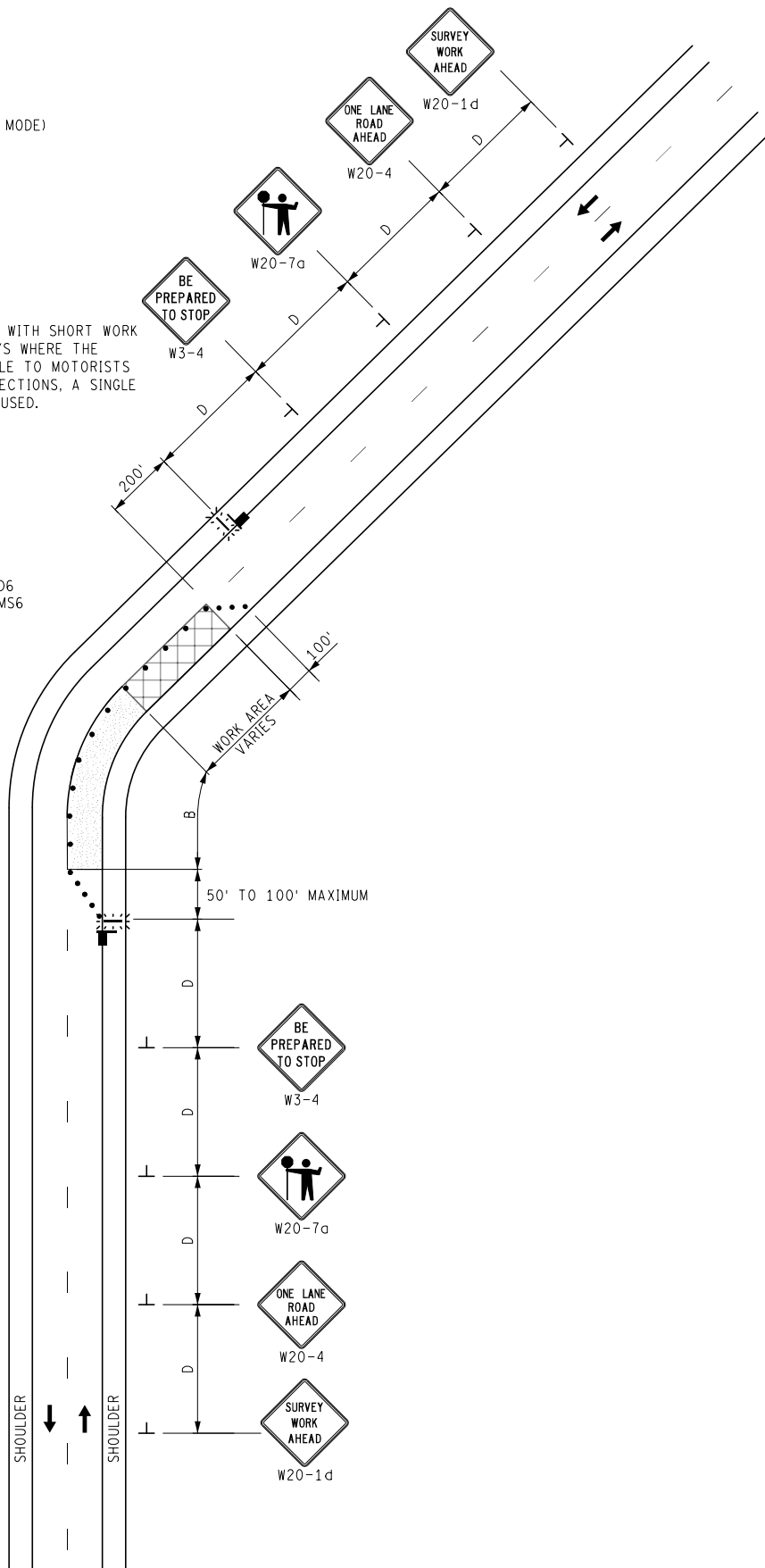
NOTES

1. FOR LOW VOLUME SITUATIONS WITH SHORT WORK ZONES ON STRAIGHT ROADWAYS WHERE THE TRAFFIC REGULATOR IS VISIBLE TO MOTORISTS APPROACHING FROM BOTH DIRECTIONS, A SINGLE TRAFFIC REGULATOR MAY BE USED.

STANDARD NOTES

(SEE 102-GEN-NOTES)

- GENERAL: G1, G2, G3, G4
- SIGNING: S1
- TRAF REG: TR1, TR2, TR3
- DEVICES: TCD1, TCD2, TCD6
- MAINT & SURV: MS2, MS3, MS4, MS6



NOT TO SCALE

	SURVEYING MAINTAINING TRAFFIC TYPICAL	DURATION: SHORT-TERM STATIONARY	LANE CLOSURE ON A TWO-LANE, TWO-WAY ROADWAY UTILIZING TRAFFIC REGULATORS	DATE: MAY 2021
				NO: 5110-S-TR-NFW-2L
FILE: 5110-S-TR-NFW-2L.dgn				SHEET: 1 OF 1