

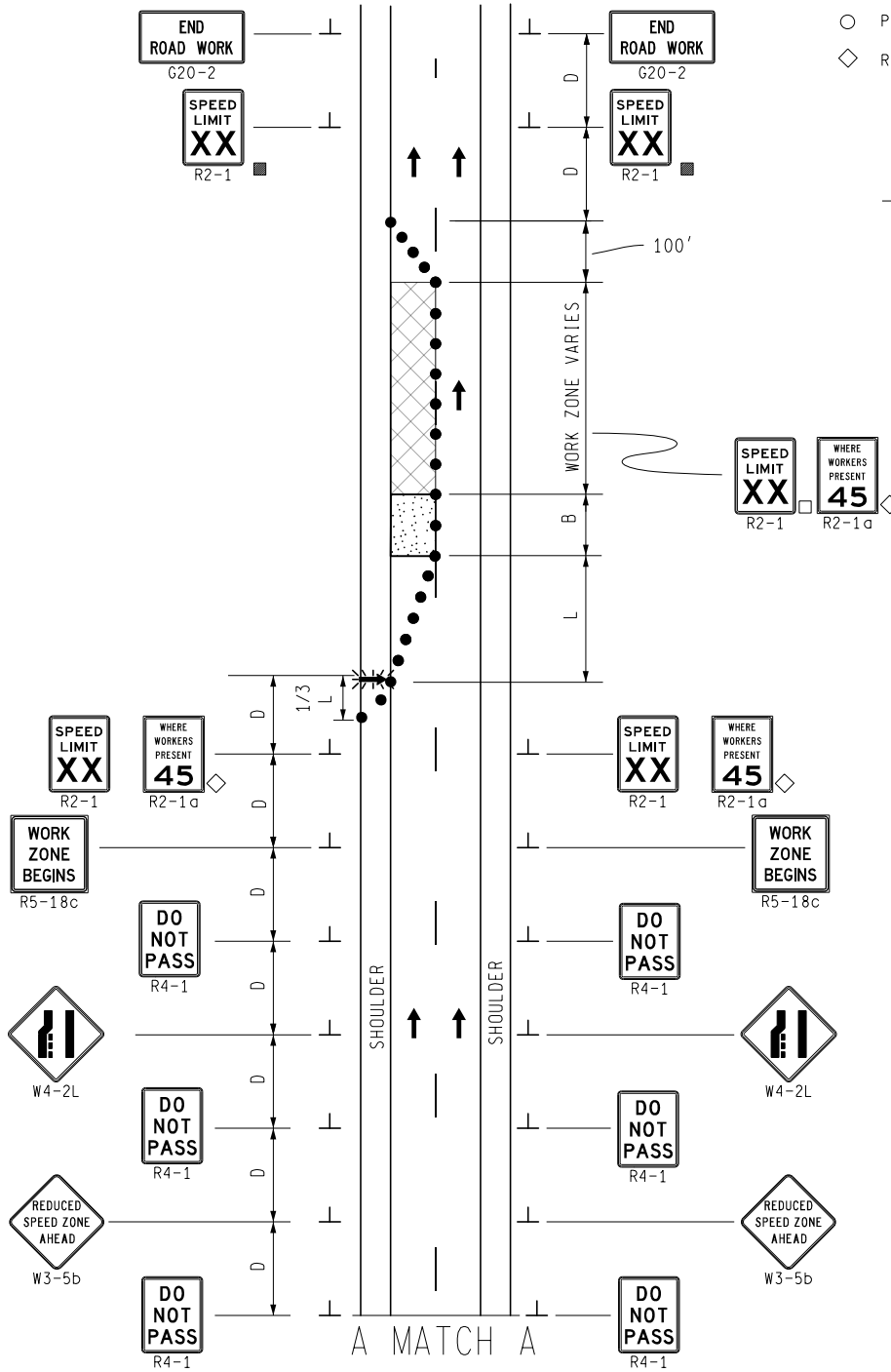
KEY

- CHANNELIZING DEVICES
- ⚡ LIGHTED ARROW PANEL
- ← TRAFFIC FLOW
- REFLECTS EXISTING SPEED LIMIT
- PLACE SIGN AS INDICATED IN NOTE S5
- PLACE SIGN AS INDICATED IN NOTE S2
- ◇ R2-1a OPTIONAL

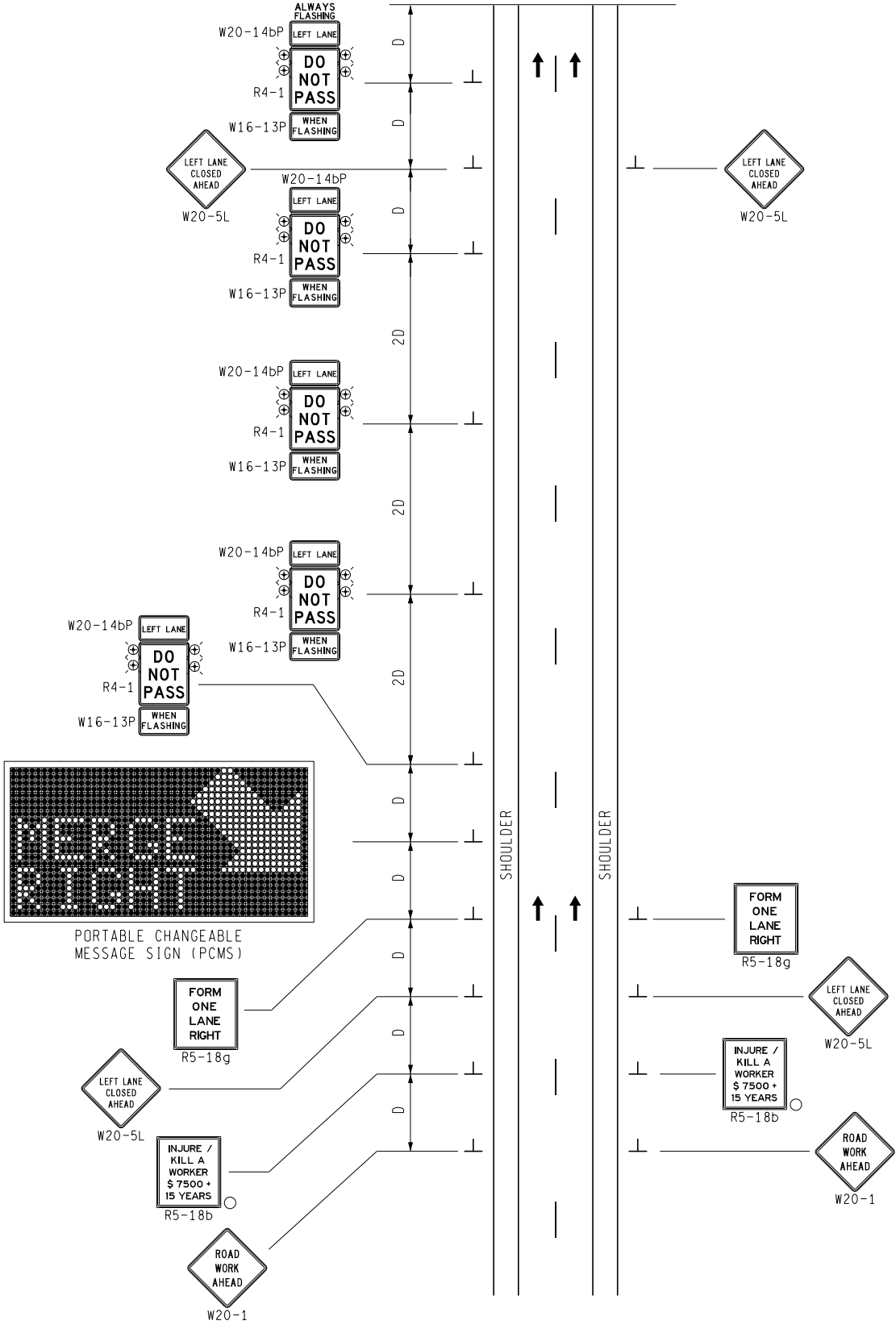
STANDARD NOTES

(SEE 102-GEN-NOTES)

GENERAL: G1, G2, G3, G4
 SIGNING: S1, S2, S3, S5, S6, S8
 DEVICES: TCD1, TCD2, TCD6, TCD10



A MATCH A



NOT TO SCALE

MAINTAINING TRAFFIC TYPICAL

NO:
340-SP-EM-1LC-(L)

SINGLE LANE CLOSURE
WITH EARLY MERGE
ON A 2-LANE FREEWAY

DATE:
MAY 2021

SHEET: