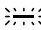

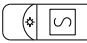
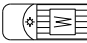
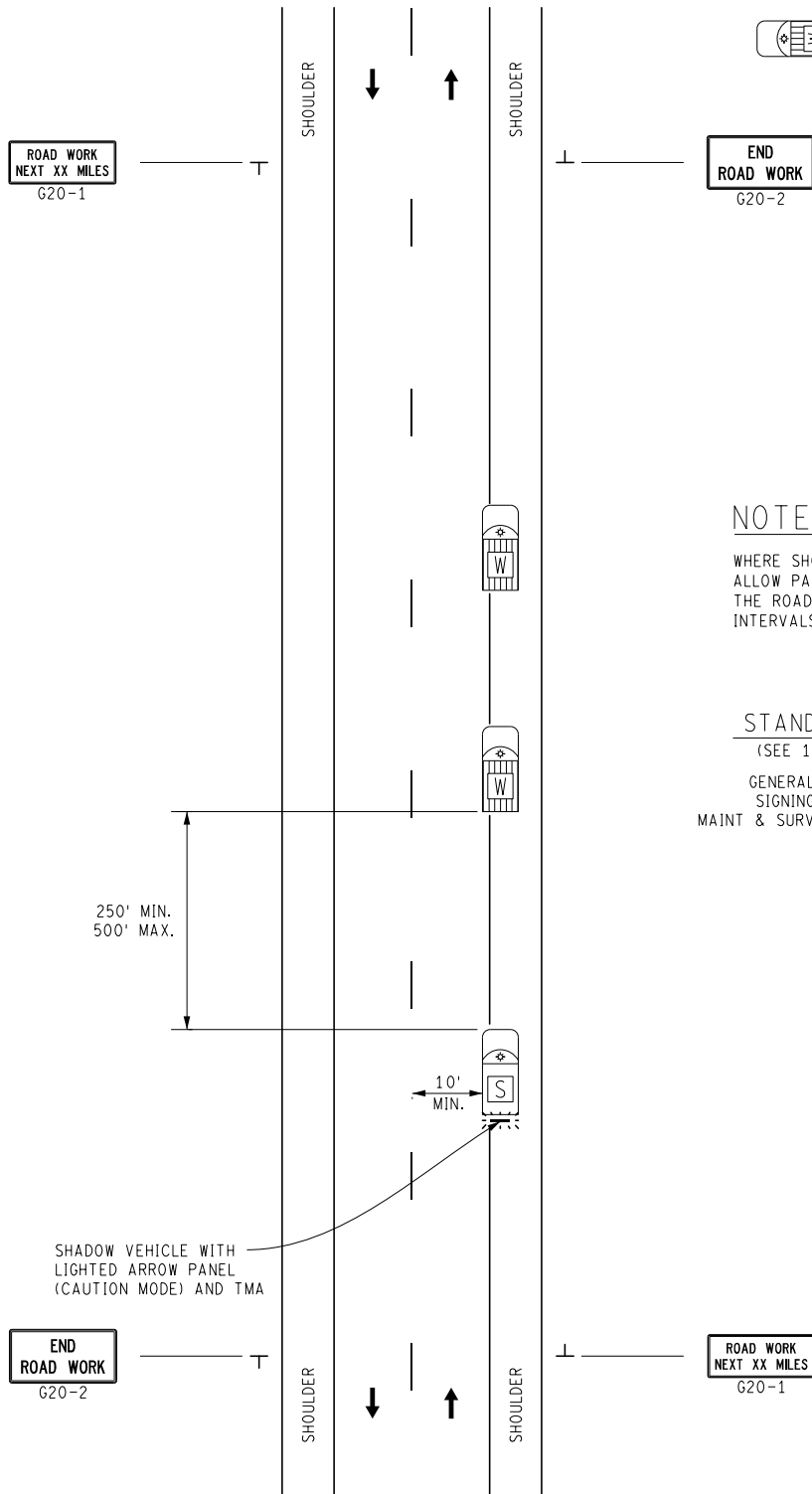


KEY

-  LIGHTED ARROW PANEL (TRUCK MOUNTED) (CAUTION MODE)
-  TRAFFIC FLOW
-  SHADOW VEHICLE WITH TRUCK MOUNTED ATTENUATOR
-  WORK VEHICLE



NOTES

WHERE SHOULDERS ARE NARROW AND INSUFFICIENT WIDTH EXISTS TO ALLOW PASSING, THE CONVOY SHALL CEASE OPERATION AND PULL OFF THE ROADWAY TO ALLOW QUEUED TRAFFIC TO PASS AT REASONABLE INTERVALS.

STANDARD NOTES

(SEE 102-GEN-NOTES)

GENERAL: G1, G3, G4

SIGNING: S1

MAINT & SURV: MS1, MS2, MS3, MS4, MS5

NOT TO SCALE

	MAINTENANCE MAINTAINING TRAFFIC TYPICAL	DURATION: MOBILE	SHOULDER WORK ON A TWO-LANE, TWO-WAY ROADWAY WITH LANE ENCROACHMENTS	DATE: MAY 2021
				NO: 4405-M-NFW-SHL
				SHEET: 1 OF 1
FILE: 4405-M-NFW-SHL.dgn				