

MICHIGAN  
STATE HIGHWAY DEPARTMENT  
LANSING 13



CHARLES M. ZIEGLER  
STATE HIGHWAY COMMISSIONER

INTEROFFICE COMMUNICATION

December 2, 1952

TO: W. W. McLaughlin  
Testing and Research Engineer

SUBJECT: Condition survey of Bituminous Concrete Projects  
Containing Wallace Stone  
Research Project 51 A-12: Report No. 186

This report covers a field survey of six bituminous surfacing projects in which Wallace Stone from Bayport was the aggregate used in the surface course. The work is a continuation of the study requested by Mr. C. J. Olsen, Materials Engineer, to determine the service performance of different limestones in bituminous concrete resurfacing projects.

The previous report (No. 179), concerning Lincoln Stone, was presented on July 3, 1952; also report (No. 182) concerning France Stone was presented on Sept. 30, 1952.

The survey includes five projects constructed under MSMD Specifications and one project constructed by Saginaw County. The survey was made on August 20 and 21 by William C. Broughton and E. C. Nelson.

Table 1 attached contains a summary of data pertaining to the several projects surveyed, and a series of pictures, also attached, shows the present condition of the various surfaces.

Nothing unusual was disclosed by the survey to indicate that the aggregate involved was not doing a satisfactory job.

A handwritten signature in cursive script that reads "E. S. Finney".

E. S. Finney  
Ass't. Testing & Research Engineer  
in charge of Research

WAF-am  
encl.

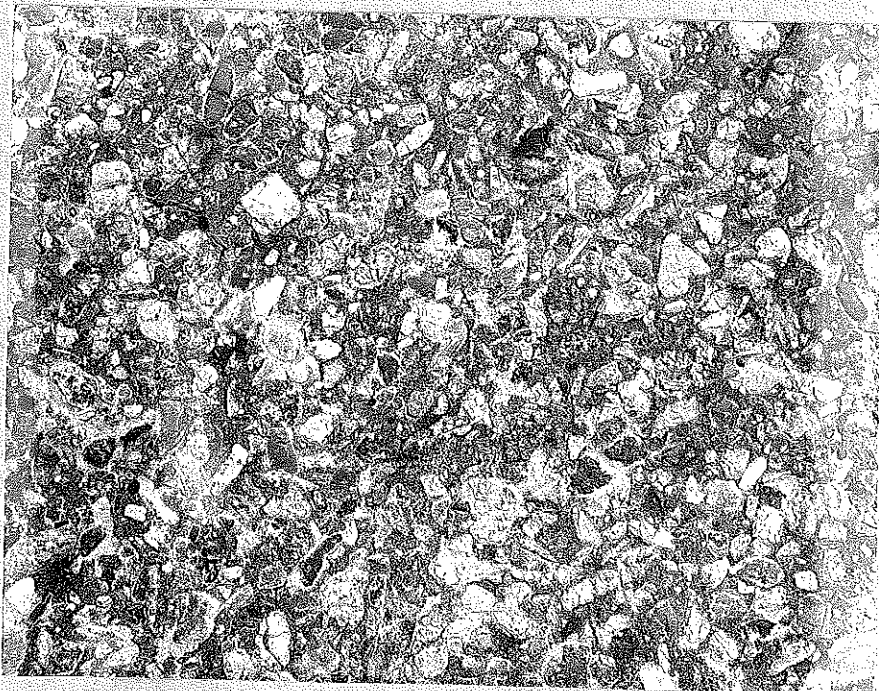
TABLE I

## SUMMARY OF DATA PERTAINING TO WALLACE SPONE SURVEY

Fig. No.	Project No.	Year Const	Length Miles	Source of Aggregate	Specifications	Location	Condition
1	F 25-4-0 11	1948	5.384	Wallace	26 A Mod.	US-10 (Dort Hwy. Flint) ctr. 2 lanes of 4 lane highway	No Pitting
2	S 25-9-02	1948	3.937	Wallace	26 A	M-21A West of M-15	No Pitting
3	M 25-38-03	1948		Wallace	26 A Mod.	Intersection US-10 & M-121 in Flint	Slight Abrasion
4	M 25-36-01	1949	0.63	Wallace	26 A Mod.	On US-23 So. of M-21 (Court St. Intersection)	No Pitting
5	Co. Project	1922	3.00	Wallace	County Specifications	On Jones Rd. between Outer Drive & No. Portsmouth Rd.	No Pitting
6	State Reward 4145	1920	1.00	Wallace	State Specifications	On M-47 from 2 Mi. So. of M-46, So. 1 Mi. (Resealed in 1940 with Wallace	No Pitting



A. Typical condition of surface - No pitting



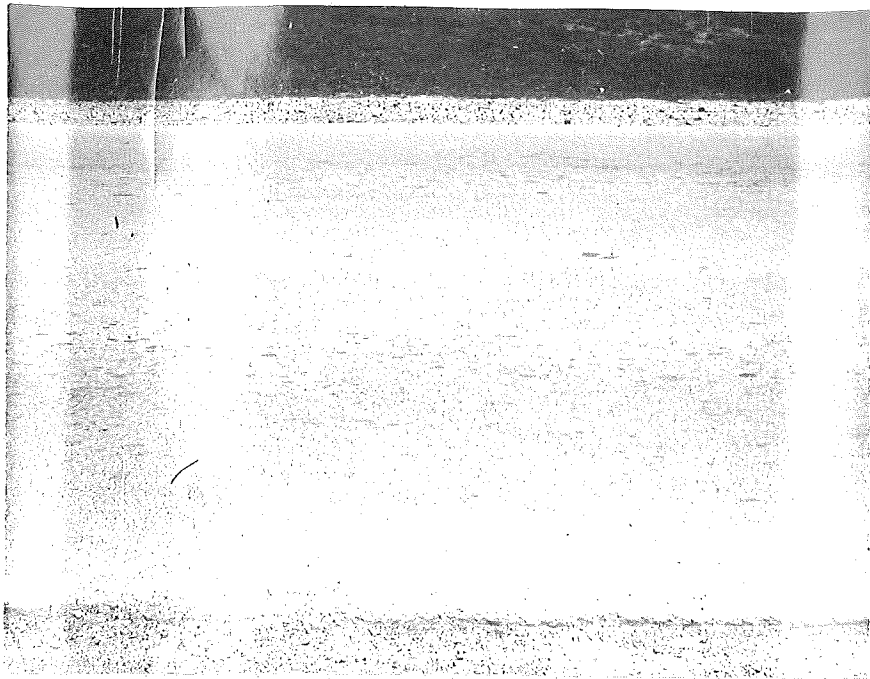
B. View of surface showing typical condition of aggregate  
Wallace stone 26A modified R-25-4, C11, 1948, US-10 Dort  
Highway Flint just No. of Carpenter Rd., Center two lanes  
of a four lane highway.



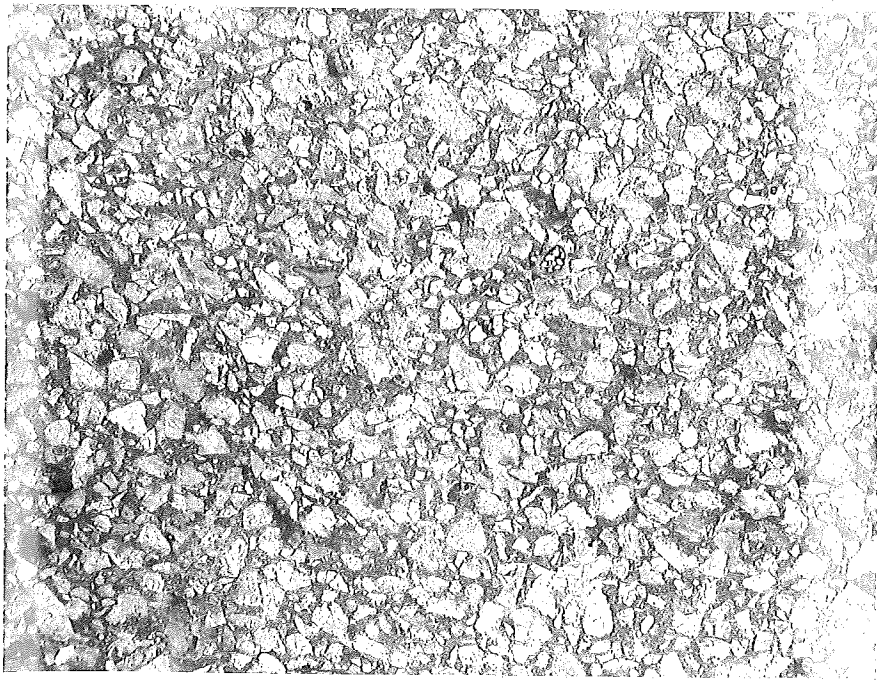
A. Typical condition of surface - No pitting



B. View of surface showing typical condition of aggregate  
Wallace stone 26A modified R-25-4, 011, 1948, US-10 Dort  
Highway Flint just No. of Carpenter Rd., Center two lanes  
of a four lane highway.



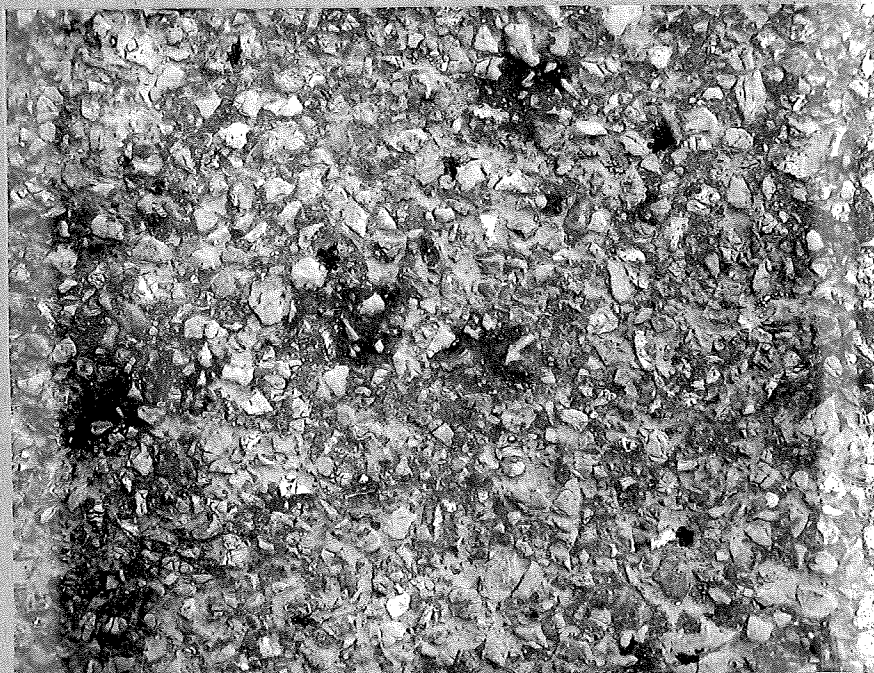
A. Typical condition of surface. No pitting



B. View of surface showing typical condition of aggregate  
Wallace stone 26A modified S 25-9,02, 1948, M-21A (Belsay  
Road) West of M-15.



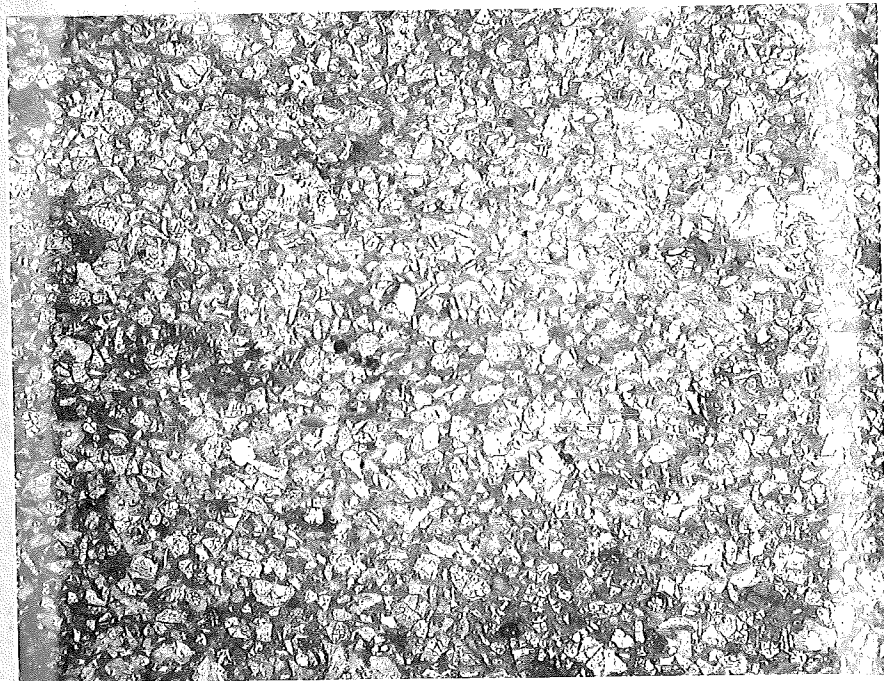
A. Typical condition of surface. No pitting. Shows signs of slight abrasion due to material brought onto intersection by traffic.



B. View of surface showing typical condition of aggregate Wallace stone 26A Modified M 25-38, 03, 1948, Intersection of US-23 & M-121 in Flint.



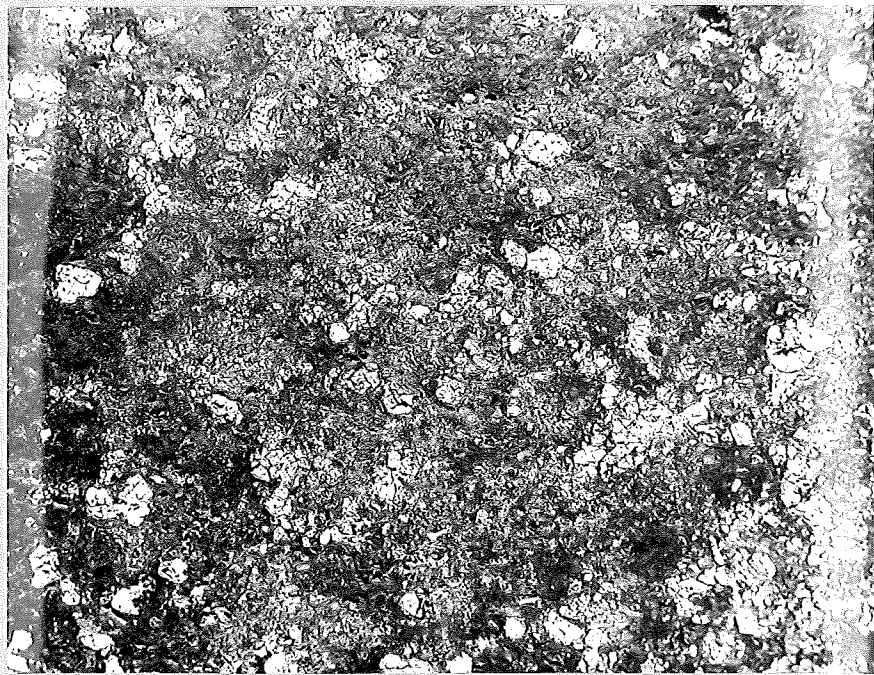
A. Typical condition of surface. No pitting.



B. View of surface showing typical condition. Wallace stone 26A Modified M-25-36, 01 - 1949. On US-23 So. from M-21 in Flint.



A. Typical condition of surface. No pitting.



B. View of surface showing typical condition of aggregate. Wallace stone Co. Spec. Note large size of aggregate on Janes Road between Outer drive and N. Portsmouth Rd., Saginaw Co. This road has carried heavy traffic from local coal mine for years and also was used as detour for trunk line Constr. Still a good riding surface. County job 1922.





A. Typical condition of surface. No pitting.



B. View of surface showing typical condition of aggregate. Resealed Wallace stone in 1940 (from Maintenance Engr.) State Reward 4145 1920 M-47 2 miles So. of M-46, So. 1 Mile.