

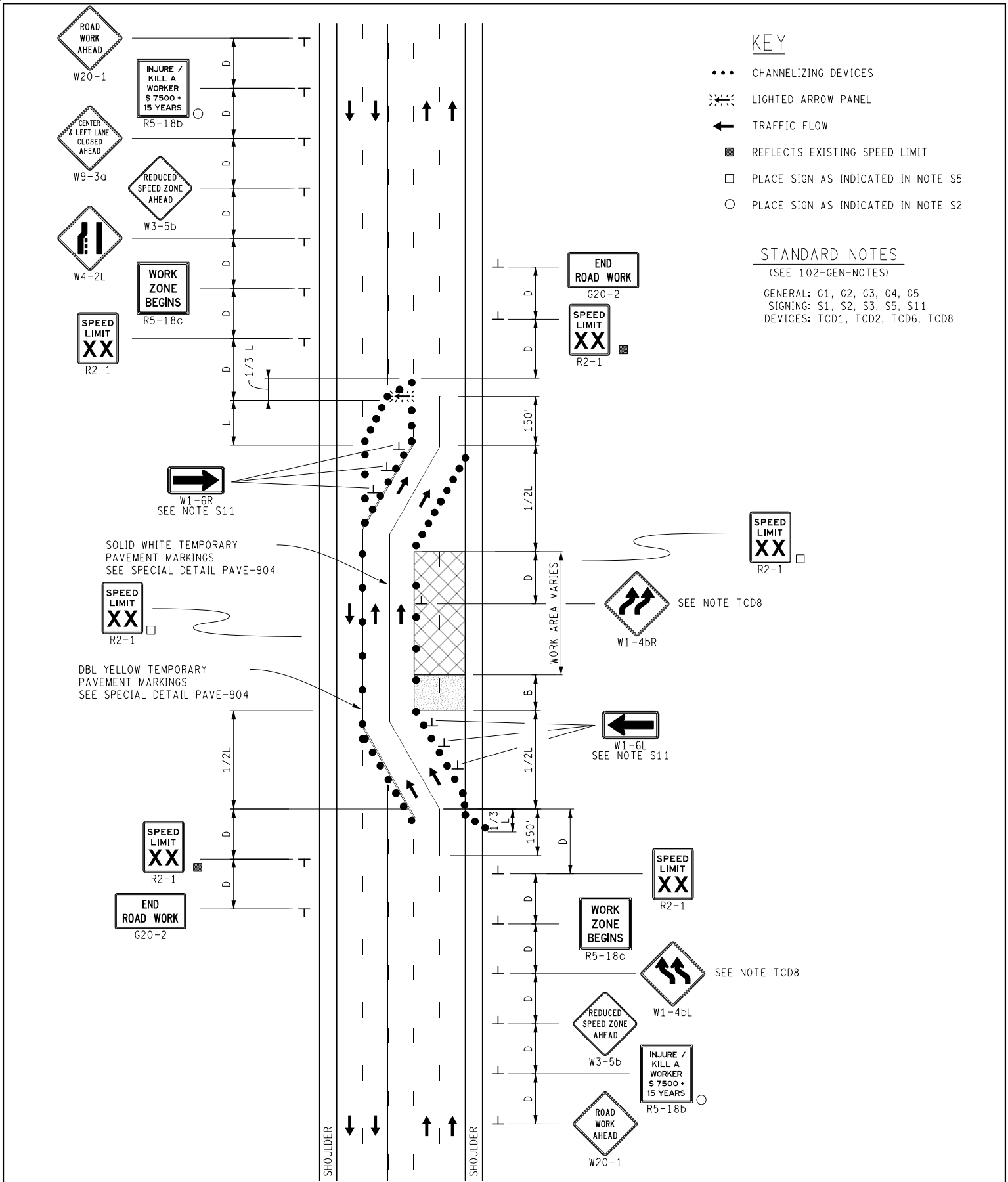
KEY

- CHANNELIZING DEVICES
- ⚡ LIGHTED ARROW PANEL
- ← TRAFFIC FLOW
- REFLECTS EXISTING SPEED LIMIT
- PLACE SIGN AS INDICATED IN NOTE S5
- PLACE SIGN AS INDICATED IN NOTE S2

STANDARD NOTES

(SEE 102-GEN-NOTES)

GENERAL: G1, G2, G3, G4, G5
 SIGNING: S1, S2, S3, S5, S11
 DEVICES: TCD1, TCD2, TCD6, TCD8



	NOT TO SCALE	MAINTAINING TRAFFIC TYPICAL	1-BOUND CLOSURE WITH A DOUBLE LANE SHIFT ON A 5-LANE UNDIVIDED ROADWAY	DATE: JUNE 2021
		NO: 131-CLT-1(L)LC-SHIFT		SHEET: 1 OF 1