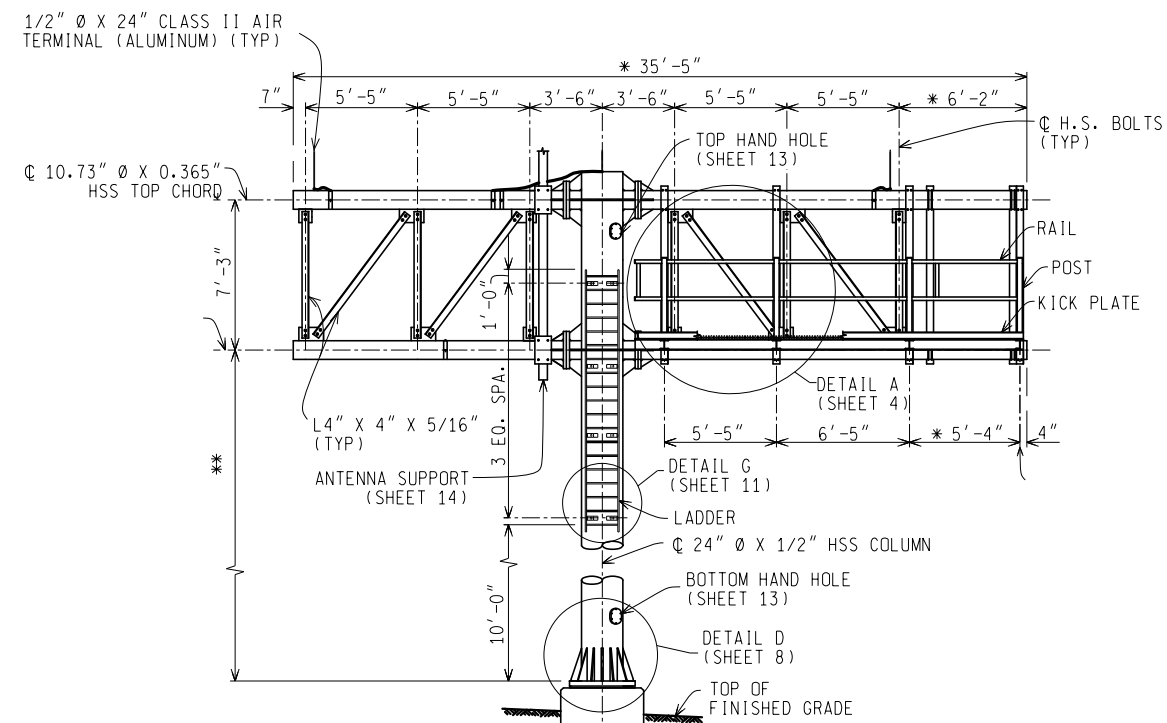


PLAN

* CONTRACTOR TO VERIFY DIMENSION CONFORMS TO DMS CABINET.



ELEVATION

OUTLINE OF DMS CABINET NOT SHOWN FOR CLARITY.
 * CONTRACTOR TO VERIFY DIMENSION CONFORMS TO DMS CABINET.
 ** SEE CONTRACT PLANS FOR HEIGHT (32'-0" MAXIMUM).

NOTES:

1. THE DESIGN OF THIS STRUCTURE IS BASED ON THE AASHTO STANDARD SPECIFICATIONS FOR STRUCTURAL SUPPORTS FOR HIGHWAY SIGNS, LUMINARIES, AND TRAFFIC SIGNALS, 4TH EDITION 2001 WITH INTERIMS THROUGH 2003.
2. THE DESIGN OF THE CONNECTION OF THE DMS CABINET MOUNTING POSTS TO TRUSS CHORDS MUST BE SUBMITTED FOR APPROVAL.
3. MAXIMUM SIGN AREA IS 285 SQUARE FEET.
4. PROVIDE 15/16 DIAMETER HOLES FOR 7/8 DIAMETER HIGH STRENGTH (H.S.) BOLTS FOR ALL CONNECTIONS UNLESS OTHERWISE STATED.
5. CONTRACTOR TO ORIENT THE L4" X 4" X 5/16" DIAGONAL AND VERTICAL BRACING PER FABRICATORS RECOMMENDATION. ALL BRACING ON THE STRUCTURE TO BE AT THE SAME ORIENTATION.
6. IF ANTENNA SUPPORT POLE IS REQUIRED, PROVIDE AIR TERMINAL, DOWN CONDUCTOR, AND MOUNTING STRAPS IN ADDITION TO LIGHTNING PROTECTION (LP) EQUIPMENT TO BE SUPPLIED FOR THE DMS CASE. THE TOP OF THE ANTENNA SUPPORT MUST BE SEALED WITH A TENON. CONTRACTOR TO VERIFY WITH ENGINEER METHOD TO ROUTE THE WIRE TO THE INTERIOR OF THE ANTENNA SUPPORT SUCH THAT A WATER TIGHT SEAL IS MAINTAINED.
7. INSTALL FLEXIBLE CONDUITS IN THE DMS SUPPORT STRUCTURE CENTER COLUMN TO SEPARATE POWER AND COMMUNICATIONS CABLING.
8. INSTALL RODENT SCREEN BETWEEN THE BASE PLATE (P) AND TOP OF FOUNDATION.
9. S.S. DENOTES STAINLESS STEEL. EQ. DENOTES EQUAL. SPA. DENOTES SPACED. W/ DENOTES WITH.

NOT TO SCALE File:External Partnerships/ITS Program Office/ITS Standard Details/DMS Structure/ITS-030-A LH master DMS Structure.dgn



PREPARED BY DESIGN DIVISION

DRAWN BY:
CHECKED BY:

ENGINEER OF DELIVERY
ENGINEER OF DEVELOPMENT (SPECIAL DETAIL)
FHWA APPROVAL DATE

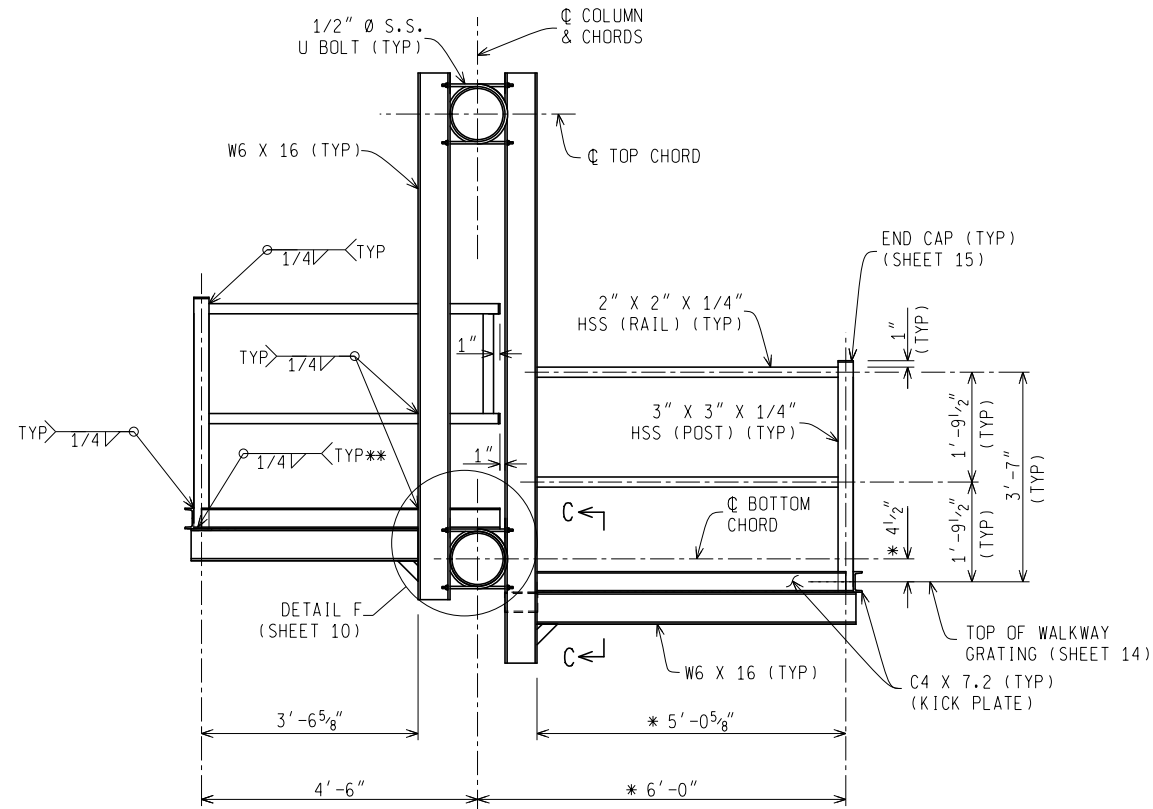
MICHIGAN DEPARTMENT OF TRANSPORTATION
BUREAU OF DEVELOPMENT STANDARD PLAN FOR
LH MASTER DMS STRUCTURE
02/05/20 ITS-030-A SHEET 1 of 16
PLAN DATE

Rev.

NOT TO SCALE File:External Partnerships/ITS Program Office/ITS Standard Details/DMS Structure/ITS-030-A LH Master DMS Structure.dgn
MICHIGAN DEPARTMENT OF TRANSPORTATION (SPECIAL DETAIL) 02/05/20 ITS-030-A SHEET 2 of 16
BUREAU OF DEVELOPMENT STANDARD PLAN FHWA APPROVAL DATE PLAN DATE

Rev.

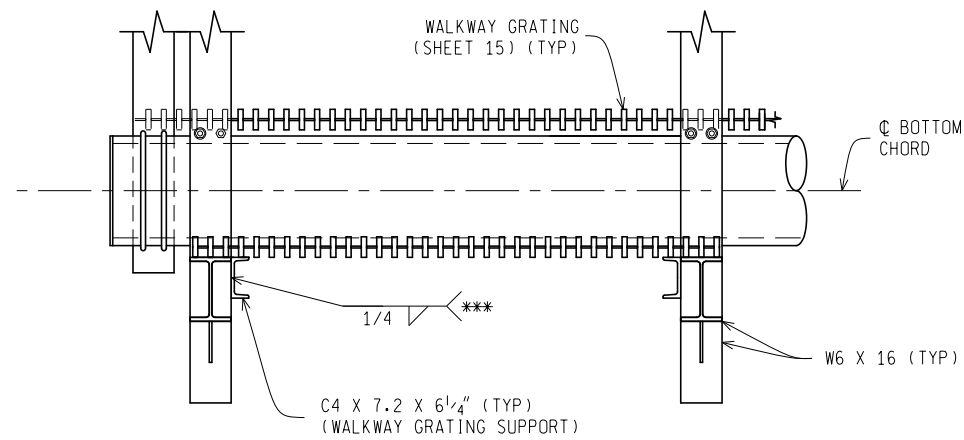
FINAL ROW PLAN REVISIONS (SUBMITTAL DATE:)						MDOT Michigan Department of Transportation	NO SCALE	DATE: PRINT DATE: 02/14/2020 FILE:	CS: JN:	LH Master DMS Structure	DRAWING SHEET SECT		
NO.	DATE	AUTH	DESCRIPTION	NO.	DATE							AUTH	DESCRIPTION



SECTION A-A

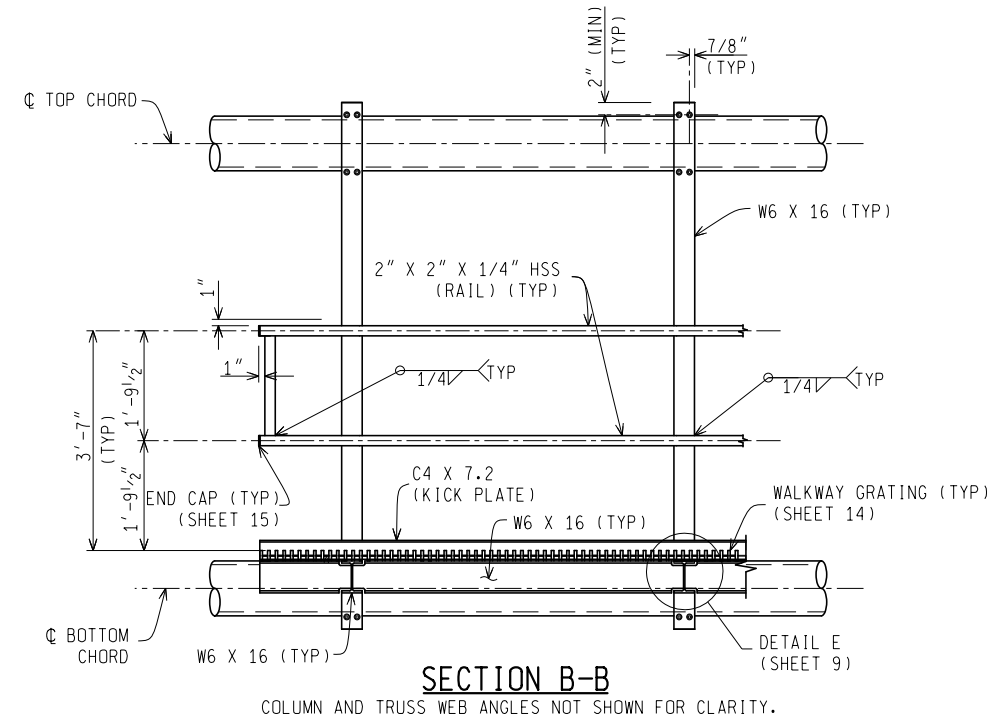
OUTLINE OF DMS CABINET, WALKWAY GRATING, AND COLUMN NOT SHOWN FOR CLARITY.
DO NOT PLACE DMS CABINET ON PLATFORM.

* CONTRACTOR TO VERIFY DIMENSION CONFORMS TO DMS CABINET.
** WELD 3" X 3" X 1/4" HSS (POST) TO W6 X 16



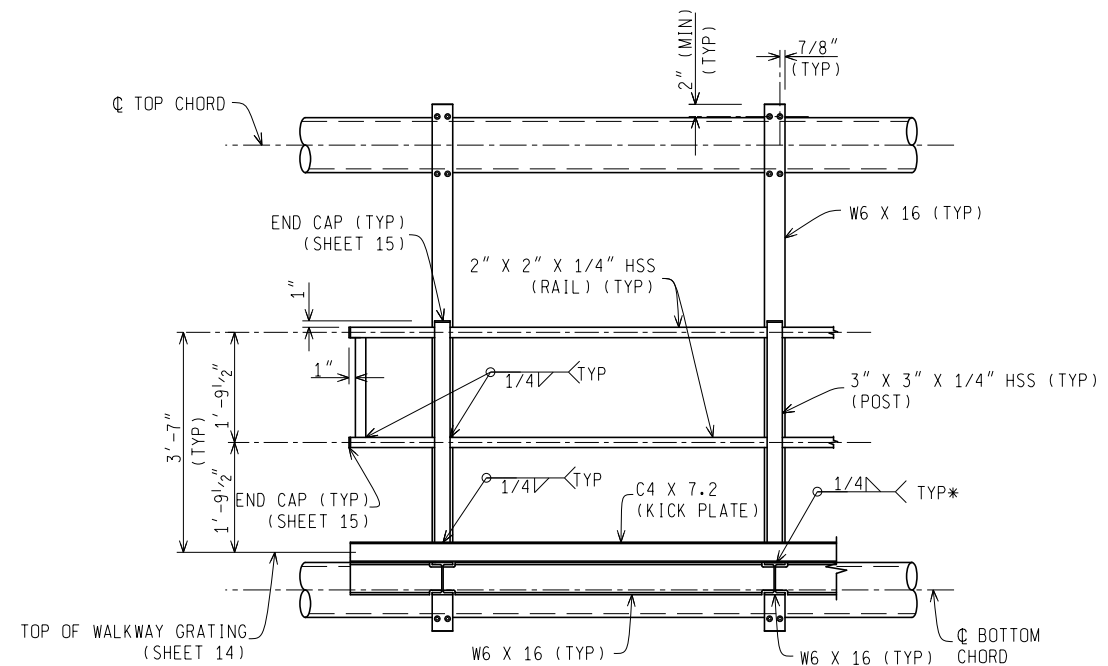
SECTION C-C

*** C4 X 7.2 X 6 1/4" WELDED TO VERTICAL W6 X 16 MEMBERS. (BOTH ENDS OF GRATING)



SECTION B-B

COLUMN AND TRUSS WEB ANGLES NOT SHOWN FOR CLARITY.



DETAIL A

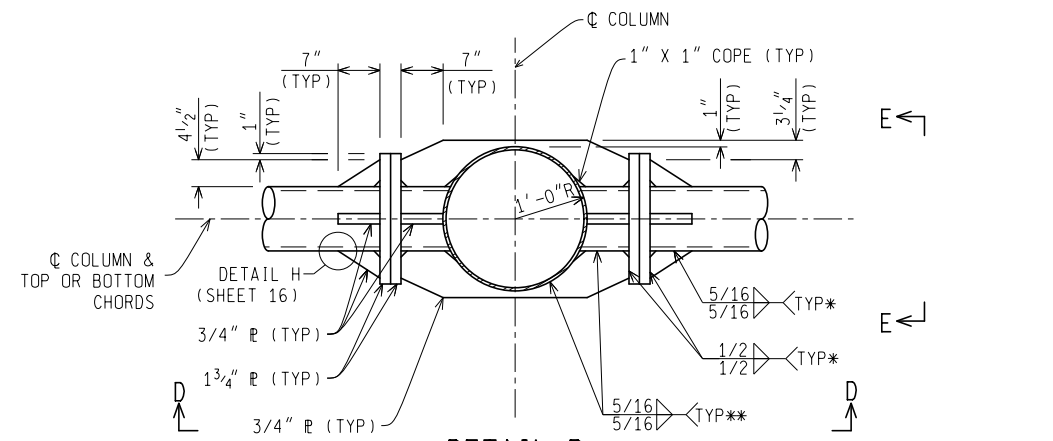
COLUMN, TRUSS WEB ANGLES, AND WALKWAY GRATING NOT SHOWN FOR CLARITY.

* WELD 3" X 3" X 1/4" HSS (POST) TO W6 X 16

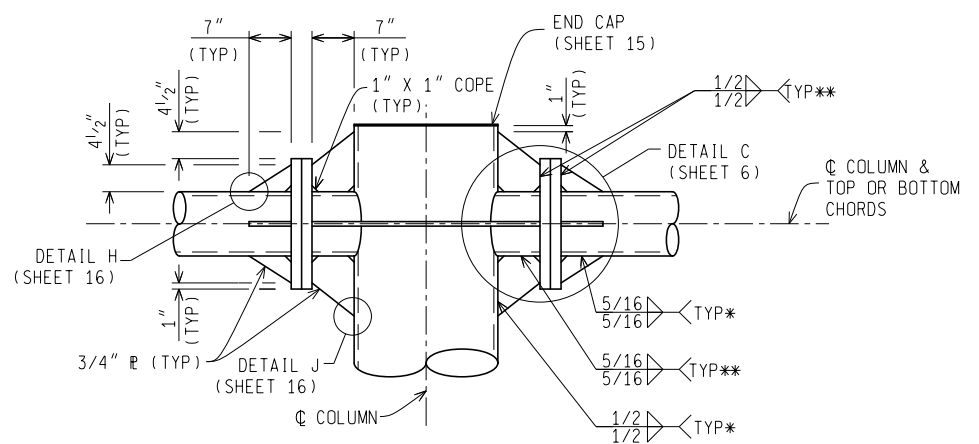
NOT TO SCALE		File: External Partnerships/ITS Program Office/ITS Standard Details/DMS Structure/ITS-030-A LH Master DMS Structure.dgn		Rev.
MICHIGAN DEPARTMENT OF TRANSPORTATION BUREAU OF DEVELOPMENT STANDARD PLAN	(SPECIAL DETAIL) FHWA APPROVAL DATE	02/05/20 PLAN DATE	ITS-030-A	SHEET 3 of 16

NOT TO SCALE		File: External Partnerships/ITS Program Office/ITS Standard Details/DMS Structure/ITS-030-A LH Master DMS Structure.dgn		Rev.
MICHIGAN DEPARTMENT OF TRANSPORTATION BUREAU OF DEVELOPMENT STANDARD PLAN	(SPECIAL DETAIL) FHWA APPROVAL DATE	02/05/20 PLAN DATE	ITS-030-A	SHEET 4 of 16

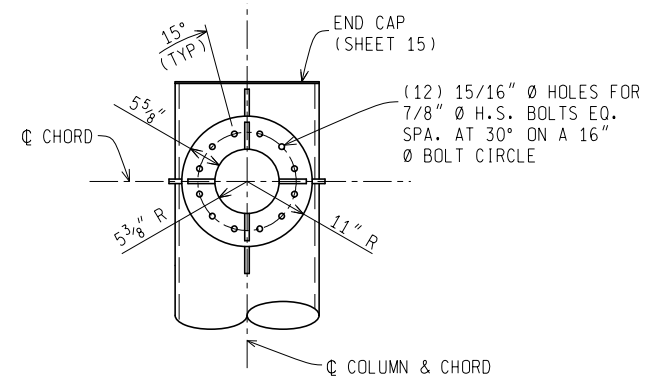
FINAL ROW PLAN REVISIONS (SUBMITTAL DATE:)									NO SCALE	DATE:	CS:	LH Master DMS Structure	DRAWING SHEET			
NO.	DATE	AUTH	DESCRIPTION	NO.	DATE	AUTH	DESCRIPTION			PRINT DATE: 02/14/2020	DESIGN UNIT:			JN:	SHEET 2 OF 8	SECT
										FILE:	TSC:					



DETAIL B
VIEW ROTATED 90°
LADDER NOT SHOWN FOR CLARITY.
CONNECTION USED FOR TOP AND BOTTOM CHORDS.



SECTION D-D
CONNECTION USED FOR TOP AND BOTTOM CHORDS.
OMIT COLUMN END CAP FOR BOTTOM CHORD.

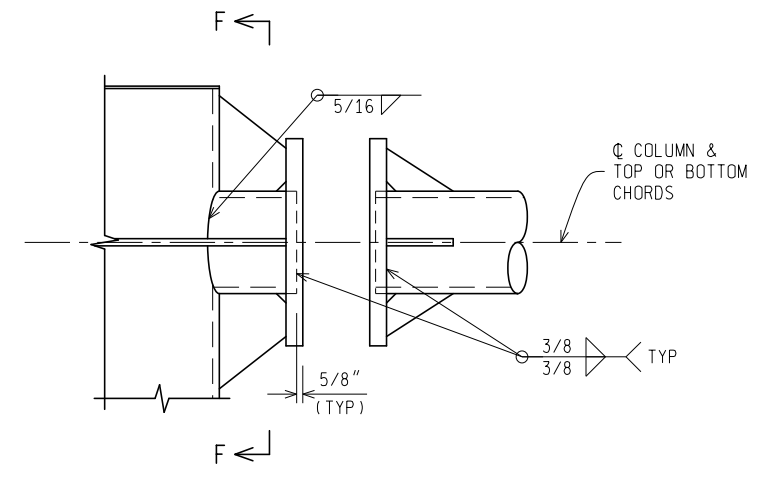


SECTION E-E
CONNECTION USED FOR TOP AND BOTTOM CHORDS.

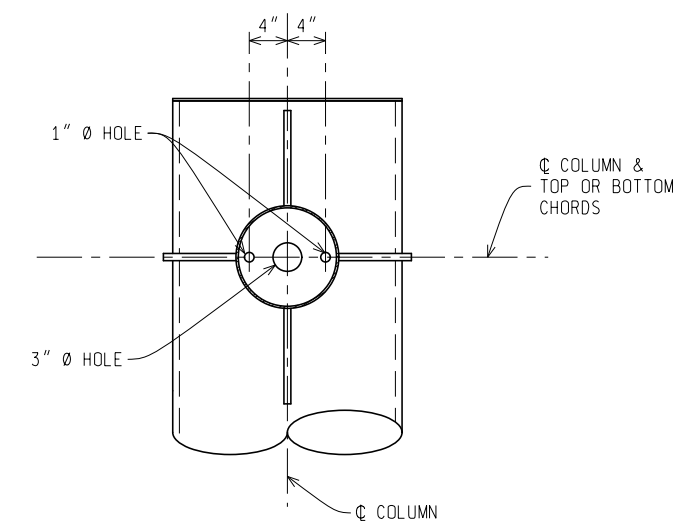
* WRAP WELD AROUND OUTSIDE EDGE AND STOP 1/4" SHORT OF CLIP.
** STOP WELD 1/4" SHORT OF CLIP.

Rev.

NOT TO SCALE		File: External Partnerships/ITS Program Office/ITS Standard Details/DMS Structure/ITS-030-A LH Master DMS Structure.dgn	
MICHIGAN DEPARTMENT OF TRANSPORTATION BUREAU OF DEVELOPMENT STANDARD PLAN	(SPECIAL DETAIL) FHWA APPROVAL DATE	02/05/20 PLAN DATE	ITS-030-A SHEET 5 of 16



DETAIL C
DETAIL USED FOR TOP AND BOTTOM CHORDS.

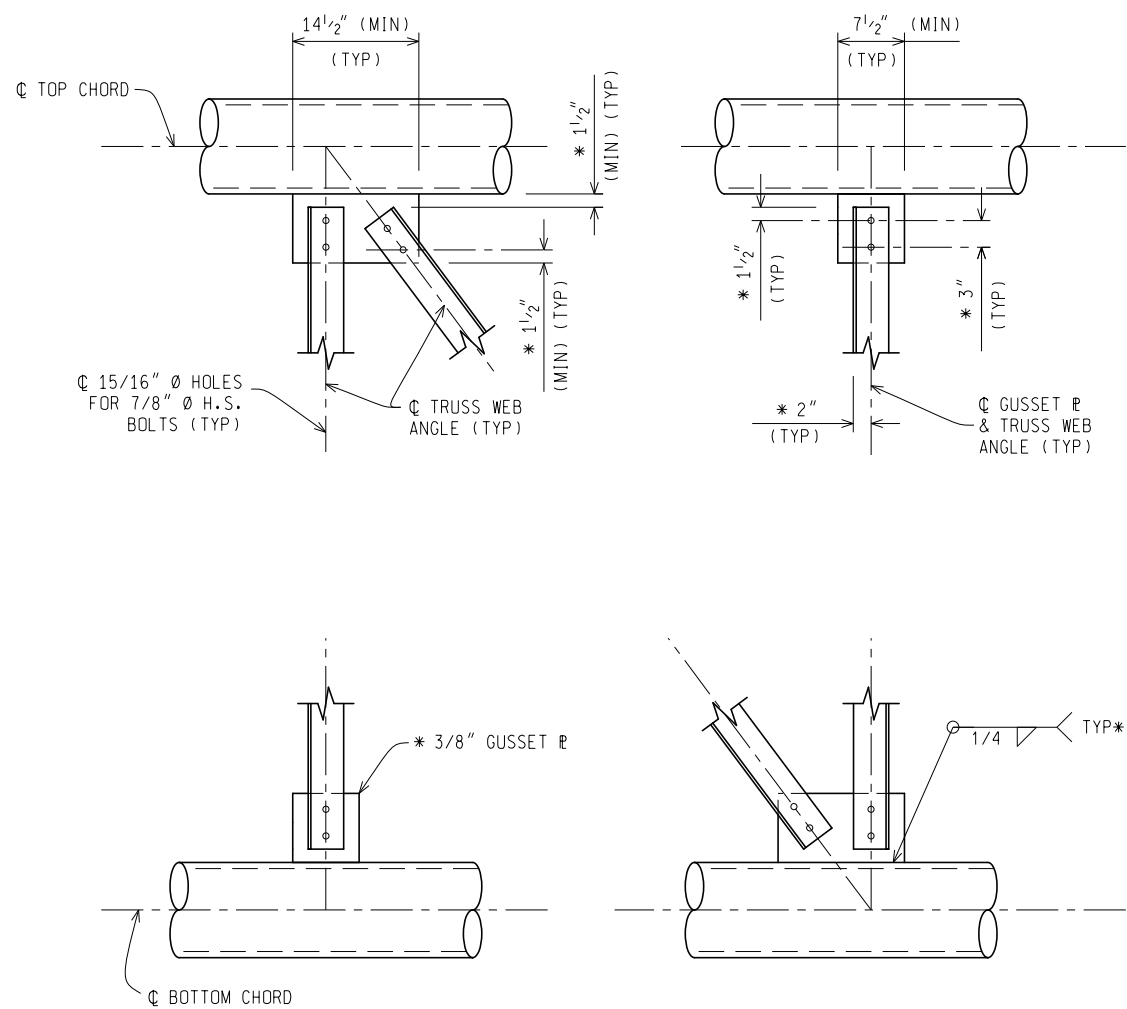


SECTION F-F
DETAIL USED FOR TOP AND BOTTOM CHORDS.

Rev.

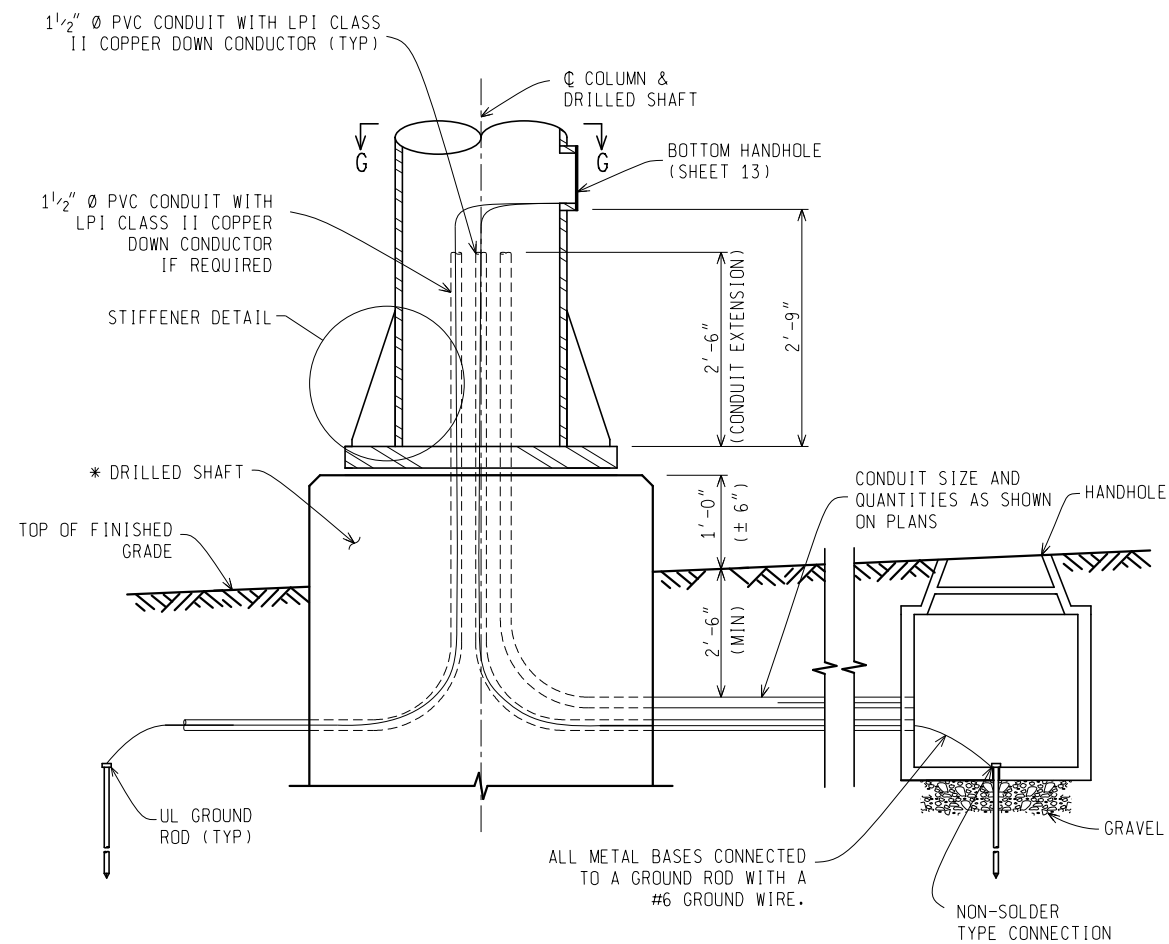
NOT TO SCALE		File: External Partnerships/ITS Program Office/ITS Standard Details/DMS Structure/ITS-030-A LH Master DMS Structure.dgn	
MICHIGAN DEPARTMENT OF TRANSPORTATION BUREAU OF DEVELOPMENT STANDARD PLAN	(SPECIAL DETAIL) FHWA APPROVAL DATE	02/05/20 PLAN DATE	ITS-030-A SHEET 6 of 16

FINAL ROW PLAN REVISIONS (SUBMITTAL DATE:)					NO SCALE	DATE: 02/14/2020	CS:	LH Master DMS Structure	DRAWING	SHEET		
NO.	DATE	AUTH	DESCRIPTION			NO.	DATE		AUTH	DESCRIPTION		SECT
						FILE:	TSC:		SHEET 3 OF 8			



**GUSSET PLATE CONNECTION
DETAILS**

* TYPICAL FOR ALL GUSSET PLATE CONNECTION DETAILS.

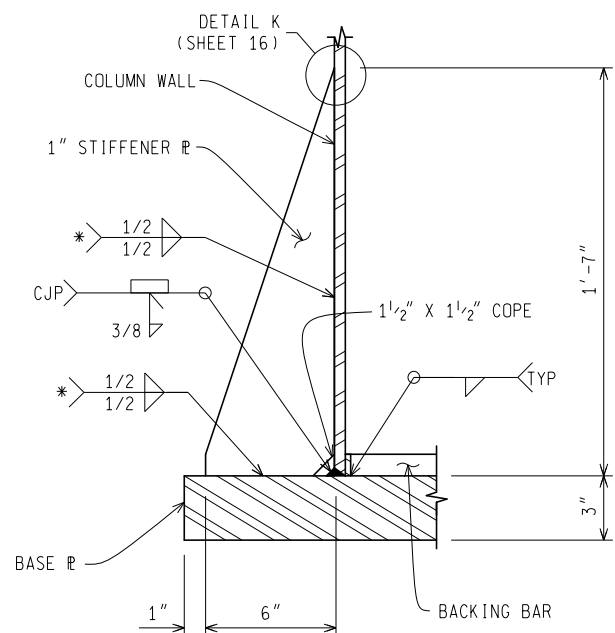


DETAIL D

* TYPE A DRILLED SHAFT SHOWN, REFER TO TYPE B DRILLED SHAFT DETAILS FOR BARRIER WALL INSTALLATION.

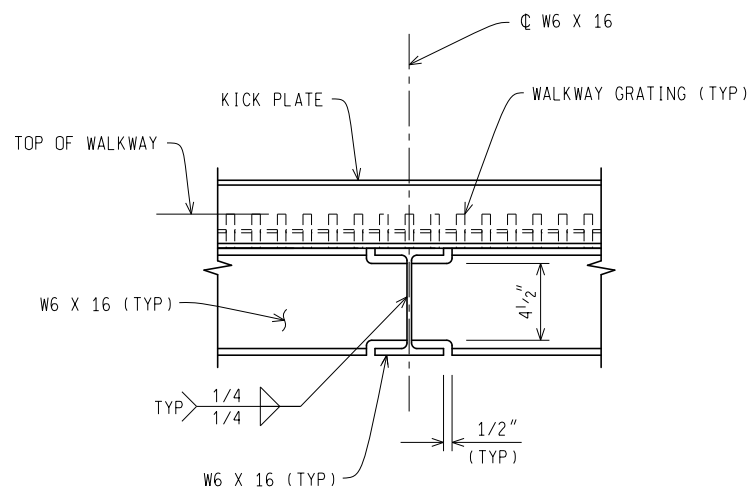
NOT TO SCALE		File: External Partnerships/ITS Program Office/ITS Standard Details/DMS Structure/ITS-030-A LH Master DMS Structure.dgn		Rev.
MICHIGAN DEPARTMENT OF TRANSPORTATION BUREAU OF DEVELOPMENT STANDARD PLAN	(SPECIAL DETAIL) FHWA APPROVAL DATE	02/05/20 PLAN DATE	ITS-030-A	SHEET 7 of 16

NOT TO SCALE		File: External Partnerships/ITS Program Office/ITS Standard Details/DMS Structure/ITS-030-A LH Master DMS Structure.dgn		Rev.
MICHIGAN DEPARTMENT OF TRANSPORTATION BUREAU OF DEVELOPMENT STANDARD PLAN	(SPECIAL DETAIL) FHWA APPROVAL DATE	02/05/20 PLAN DATE	ITS-030-A	SHEET 8 of 16



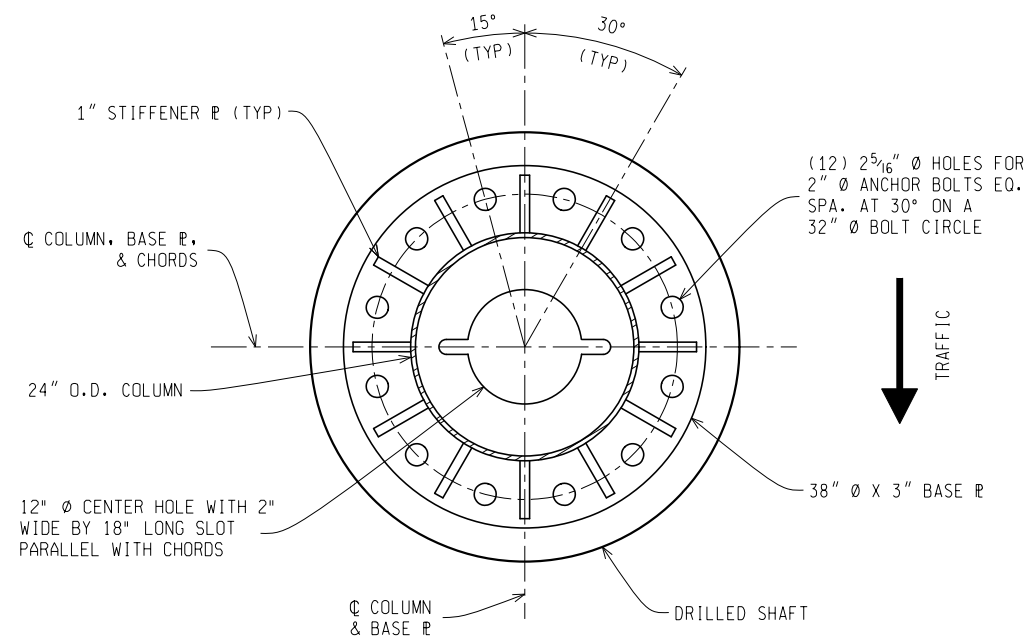
STIFFENER DETAIL

* WRAP WELD AROUND OUTSIDE EDGE AND STOP 1/4" FROM CLIP.



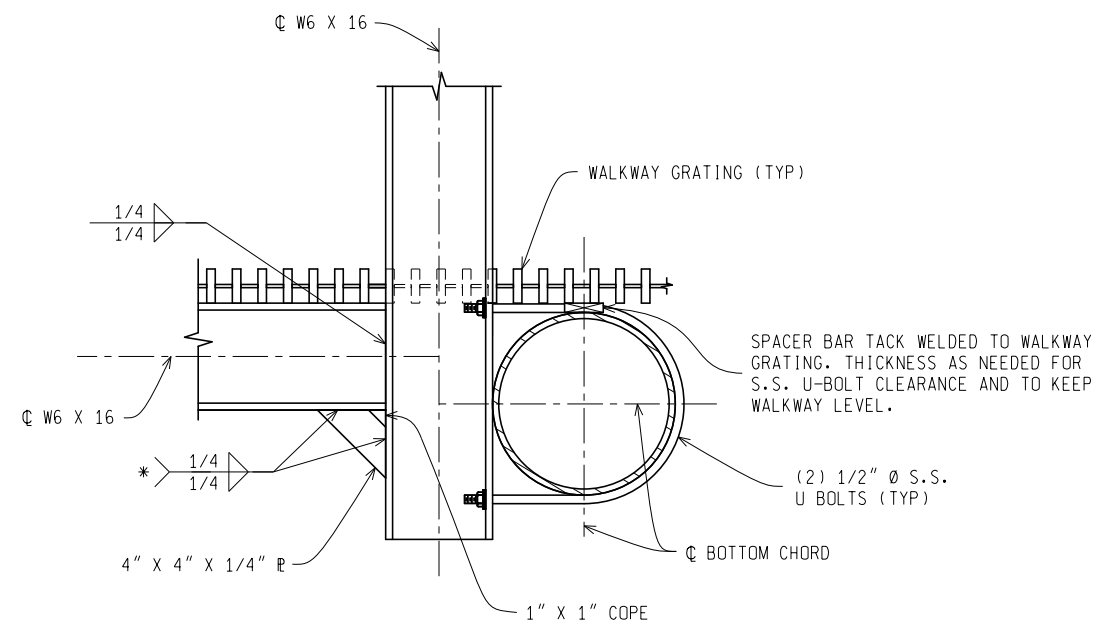
DETAIL E

TYPICAL WALKWAY BRACE CONNECTION.



SECTION G-G

ALIGN BASE PLATE AND ANCHOR BOLTS SO THAT THE DMS SIGN FACE IS POSITIONED TOWARDS TRAFFIC AT ANGLE SPECIFIED IN PLANS



DETAIL F

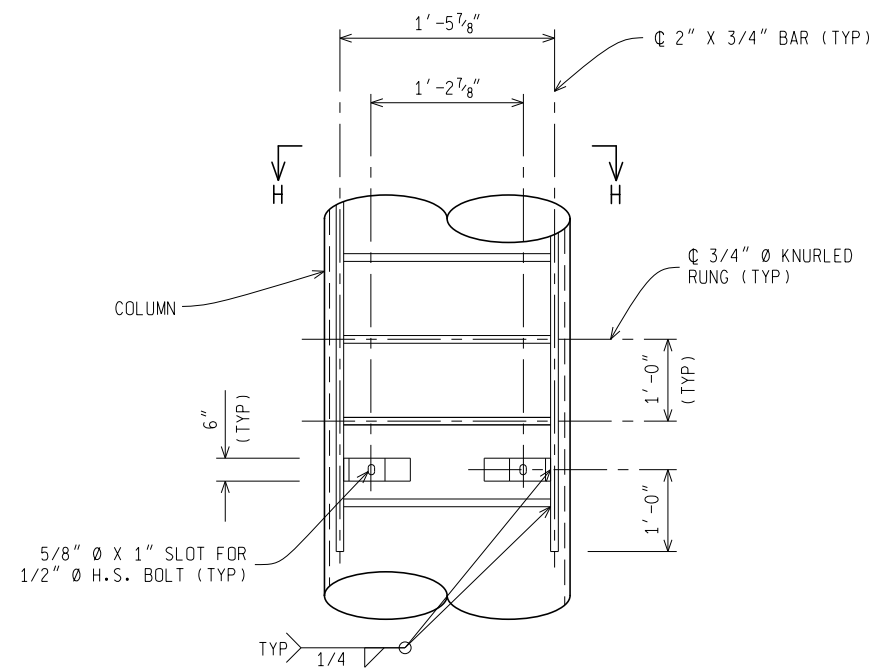
TYPICAL WALKWAY BRACE CONNECTION.

* WRAP WELD AROUND OUTSIDE EDGE AND STOP 1/4" FROM CLIP.

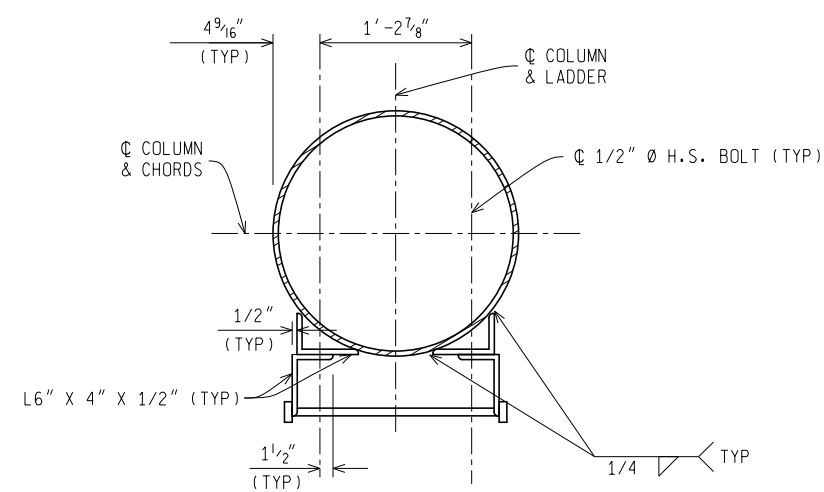
NOT TO SCALE		File: External Partnerships/ITS Program Office/ITS Standard Details/DMS Structure/ITS-030-A LH Master DMS Structure.dgn		Rev.
MICHIGAN DEPARTMENT OF TRANSPORTATION BUREAU OF DEVELOPMENT STANDARD PLAN	(SPECIAL DETAIL) FHWA APPROVAL DATE	02/05/20 PLAN DATE	ITS-030-A	SHEET 9 of 16

NOT TO SCALE		File: External Partnerships/ITS Program Office/ITS Standard Details/DMS Structure/ITS-030-A LH Master DMS Structure.dgn		Rev.
MICHIGAN DEPARTMENT OF TRANSPORTATION BUREAU OF DEVELOPMENT STANDARD PLAN	(SPECIAL DETAIL) FHWA APPROVAL DATE	02/05/20 PLAN DATE	ITS-030-A	SHEET 10 of 16

FINAL ROW PLAN REVISIONS (SUBMITTAL DATE:)									NO SCALE	DATE:	CS:	LH Master DMS Structure	DRAWING	SHEET	
NO.	DATE	AUTH	DESCRIPTION	NO.	DATE	AUTH	DESCRIPTION			PRINT DATE: 20/14/2020	DESIGN UNIT:		JN:		SECT
										FILE:	TSC:			SHEET 5 OF 8	



DETAIL G

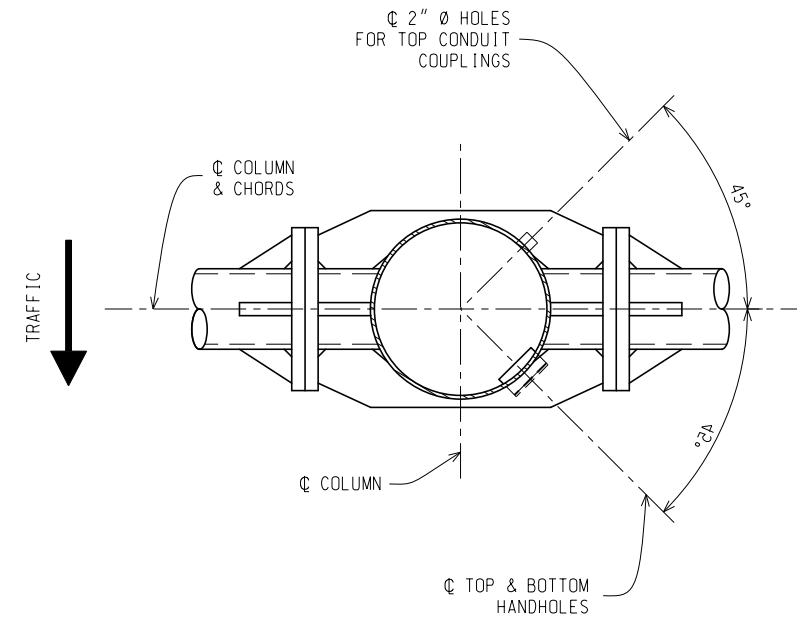


SECTION H-H

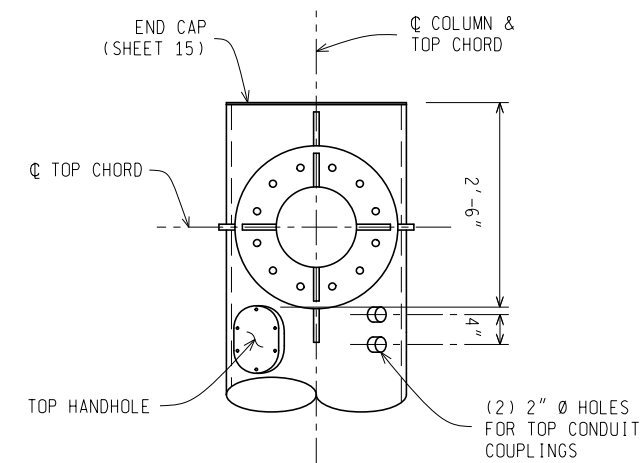
Rev.

NOT TO SCALE File: External Partnerships/ITS Program Office/ITS Standard Details/DMS Structure/ITS-030-A LH Master DMS Structure.dgn

MICHIGAN DEPARTMENT OF TRANSPORTATION BUREAU OF DEVELOPMENT STANDARD PLAN	(SPECIAL DETAIL) FHWA APPROVAL DATE	02/05/20 PLAN DATE	ITS-030-A	SHEET 11 of 16
------------------------------------------------------------------------------	----------------------------------------	-----------------------	-----------	-------------------



HANDHOLE AND COUPLING ORIENTATION



COUPLINGS

Rev.

NOT TO SCALE File: External Partnerships/ITS Program Office/ITS Standard Details/DMS Structure/ITS-030-A LH Master DMS Structure.dgn

MICHIGAN DEPARTMENT OF TRANSPORTATION BUREAU OF DEVELOPMENT STANDARD PLAN	(SPECIAL DETAIL) FHWA APPROVAL DATE	02/05/20 PLAN DATE	ITS-030-A	SHEET 12 of 16
------------------------------------------------------------------------------	----------------------------------------	-----------------------	-----------	-------------------

FINAL ROW PLAN REVISIONS (SUBMITTAL DATE:)							
NO.	DATE	AUTH	DESCRIPTION	NO.	DATE	AUTH	DESCRIPTION



NO SCALE

PRINT DATE: 02/14/2020
FILE:

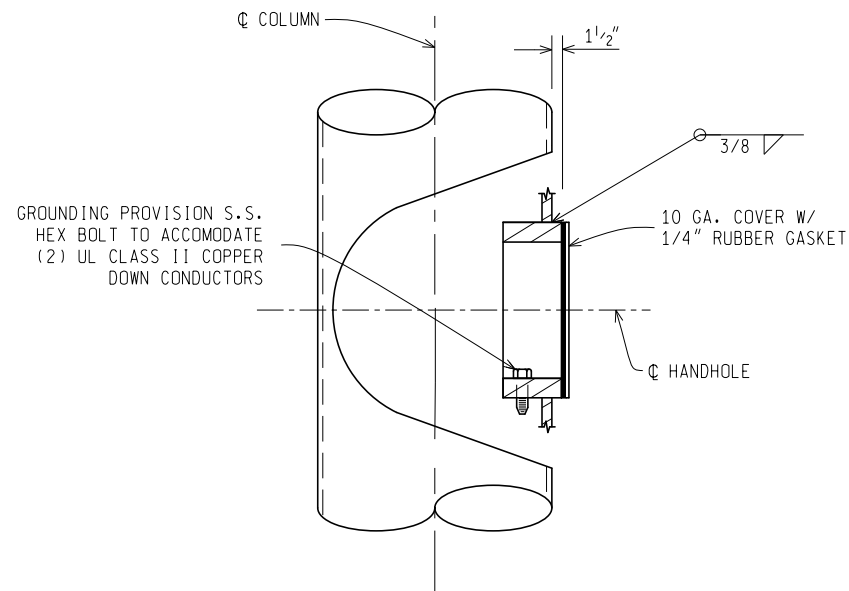
DATE:
DESIGN UNIT:
TSC:

CS:
JN:

LH Master DMS Structure

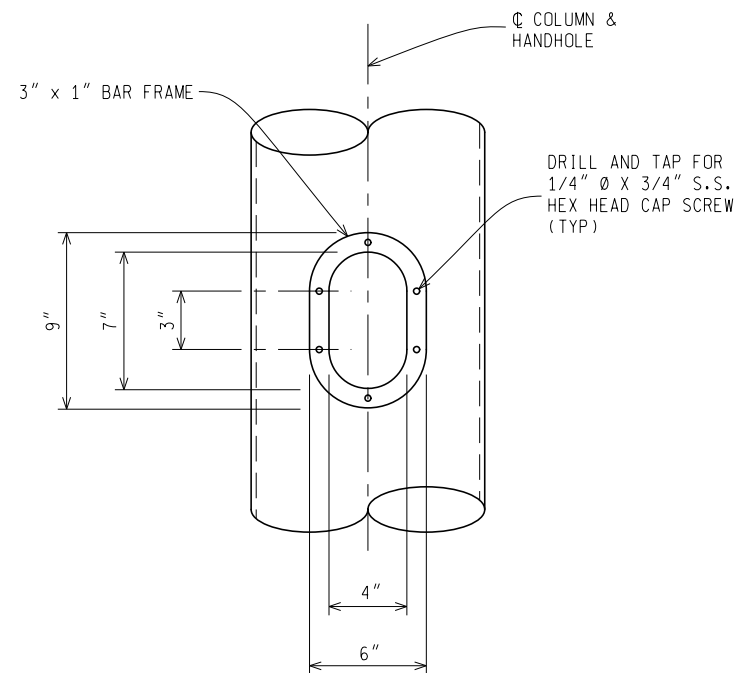
SHEET 6 OF 8

DRAWING SHEET
SECT



**TOP AND BOTTOM HANDHOLE
DETAIL**

PLACE C OF TOP HANDHOLE 2'-10 1/2" BELOW THE TOP OF COLUMN.
PLACE C OF BOTTOM HANDHOLE 3'-1 1/2" ABOVE THE TOP OF BASE PLATE.



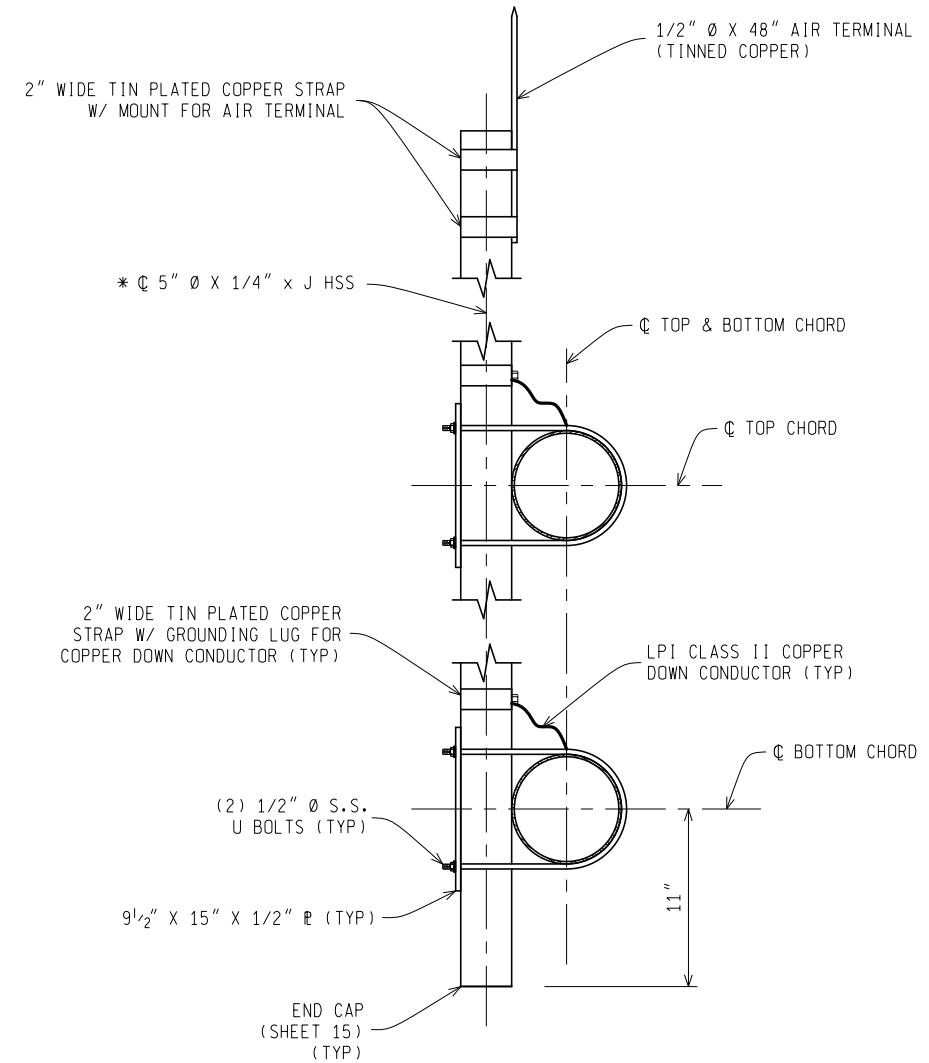
**TOP AND BOTTOM HANDHOLE
DETAIL**

(VIEW ROTATED 90 DEGREES)

Rev.

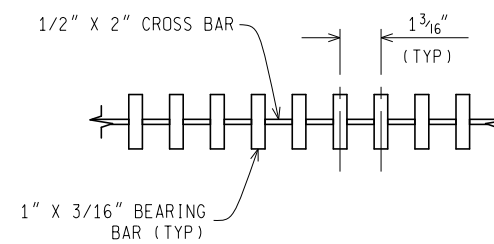
NOT TO SCALE File: External Partnerships/ITS Program Office/ITS Standard Details/DMS Structure/ITS-030-A LH Master DMS Structure.dgn

MICHIGAN DEPARTMENT OF TRANSPORTATION BUREAU OF DEVELOPMENT STANDARD PLAN	(SPECIAL DETAIL) FHWA APPROVAL DATE	02/05/20 PLAN DATE	ITS-030-A	SHEET 13 of 16
------------------------------------------------------------------------------	----------------------------------------	-----------------------	-----------	-------------------



ANTENNA SUPPORT DETAIL

* SEE CONTRACT PLANS FOR HEIGHT (21'-6" MAXIMUM).



WALKWAY GRATING DETAIL

ATTACH WALKWAY GRATING TO W6 X 16 MEMBER WITH GALVANIZED FASTENERS APPROVED BY ENGINEER, 2 MIN. PER W6 X 16 MEMBER PER GRATING PIECE.

Rev.

NOT TO SCALE File: External Partnerships/ITS Program Office/ITS Standard Details/DMS Structure/ITS-030-A LH Master DMS Structure.dgn

MICHIGAN DEPARTMENT OF TRANSPORTATION BUREAU OF DEVELOPMENT STANDARD PLAN	(SPECIAL DETAIL) FHWA APPROVAL DATE	02/05/20 PLAN DATE	ITS-030-A	SHEET 14 of 16
------------------------------------------------------------------------------	----------------------------------------	-----------------------	-----------	-------------------

FINAL ROW PLAN REVISIONS (SUBMITTAL DATE:)							
NO.	DATE	AUTH	DESCRIPTION	NO.	DATE	AUTH	DESCRIPTION



NO SCALE

PRINT DATE: 02/14/2020
FILE:

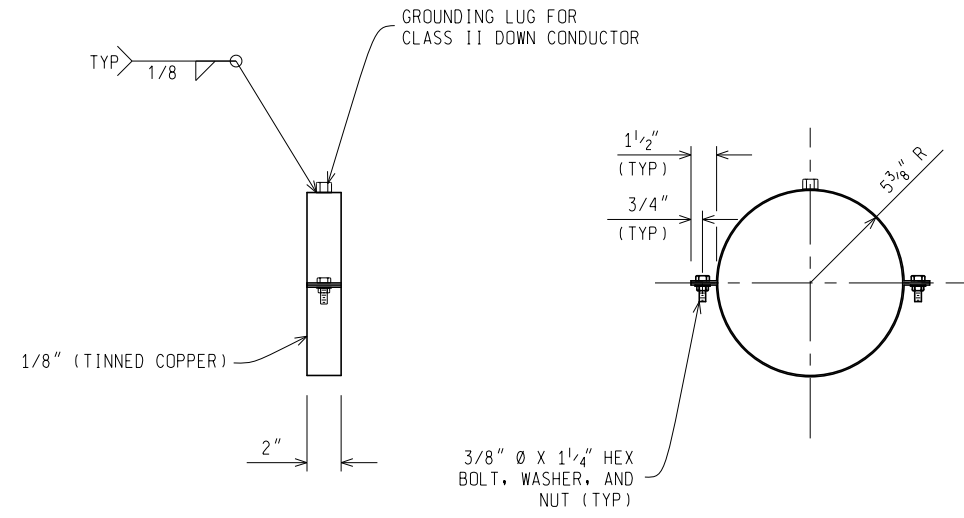
DATE:
DESIGN UNIT:
TSC:

CS:
JN:

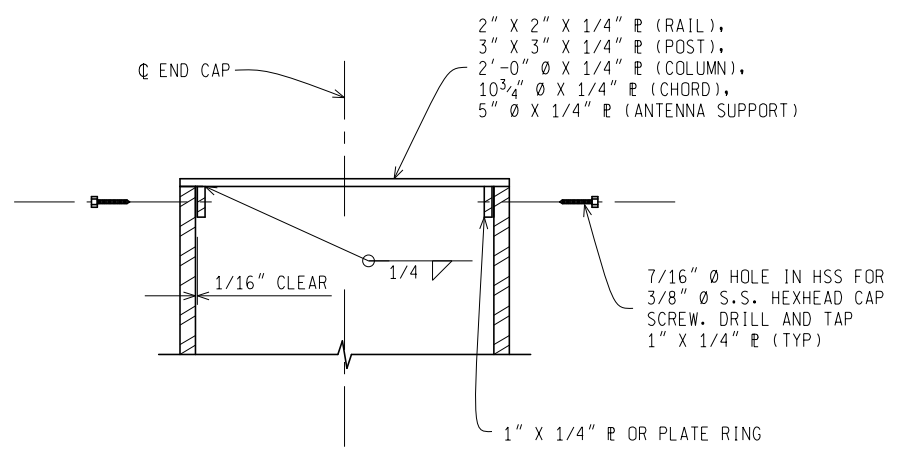
LH Master DMS Structure

SHEET 7 OF 8

DRAWING SHEET
SECT



BONDING CLAMP DETAIL

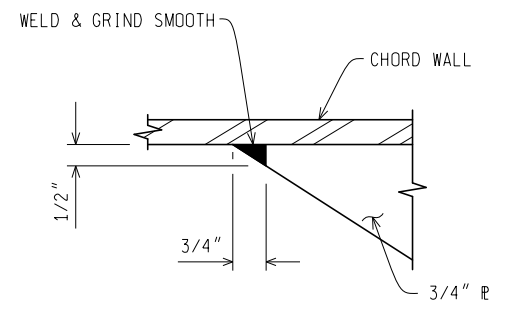


END CAP DETAIL

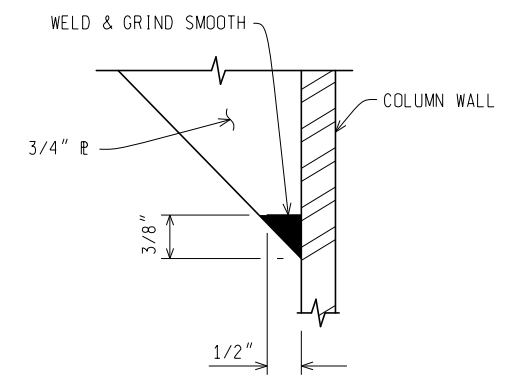
Rev.

NOT TO SCALE File: External Partnerships/ITS Program Office/ITS Standard Details/DMS Structure/ITS-030-A LH Master DMS Structure.dgn

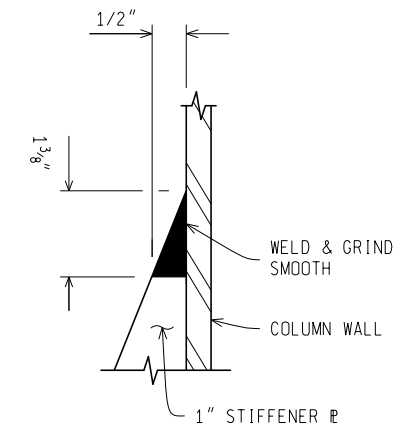
MICHIGAN DEPARTMENT OF TRANSPORTATION BUREAU OF DEVELOPMENT STANDARD PLAN	(SPECIAL DETAIL) FHWA APPROVAL DATE	02/05/20 PLAN DATE	ITS-030-A	SHEET 15 of 16
------------------------------------------------------------------------------	----------------------------------------	-----------------------	-----------	-------------------



DETAIL H



DETAIL J



DETAIL K

Rev.

NOT TO SCALE File: External Partnerships/ITS Program Office/ITS Standard Details/DMS Structure/ITS-030-A LH Master DMS Structure.dgn

MICHIGAN DEPARTMENT OF TRANSPORTATION BUREAU OF DEVELOPMENT STANDARD PLAN	(SPECIAL DETAIL) FHWA APPROVAL DATE	02/05/20 PLAN DATE	ITS-030-A	SHEET 16 of 16
------------------------------------------------------------------------------	----------------------------------------	-----------------------	-----------	-------------------

FINAL ROW PLAN REVISIONS (SUBMITTAL DATE:)							NO SCALE	DATE:	CS:	LH Master DMS Structure	DRAWING	SHEET
NO.	DATE	AUTH	DESCRIPTION	NO.	DATE			AUTH	DESCRIPTION		JN:	SECT
								PRINT DATE: 02/14/2020	DESIGN UNIT:		SHEET 8 OF 8	
								FILE:	TSC:			