

Michigan Department of Transportation Traffic and Safety



WAYNE COUNTY TRAFFIC SIGNAL DETAILS


SIGWC-026A THROUGH SIGWC-408A

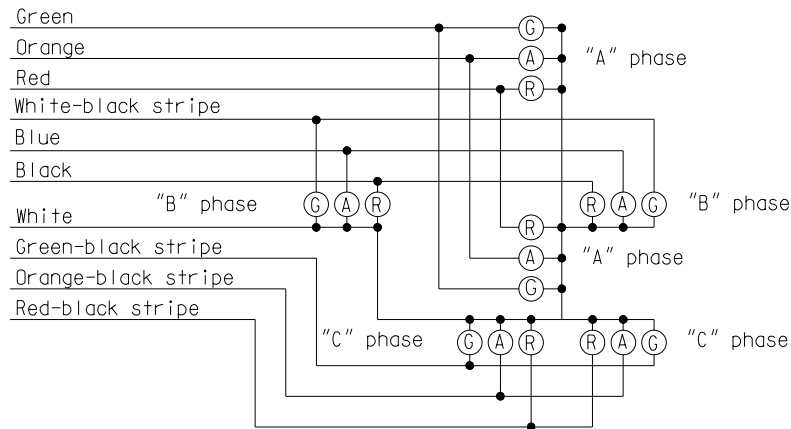
Disclaimer:

The information provided is a product of the Michigan Department of Transportation (MDOT) and is intended for your use and is not to be sold or otherwise distributed for profit. There are no expressed or implied warranties concerning the accuracy, completeness, reliability or usability of this information. The MDOT assumes no responsibility for any incorrect results or damage resulting from the use of this information.

The information presented in these documents has been prepared in accordance with recognized engineering principles and is for general use. It should not be used for specific application without competent professional examination and verification of its suitability and applicability by a licensed professional engineer.

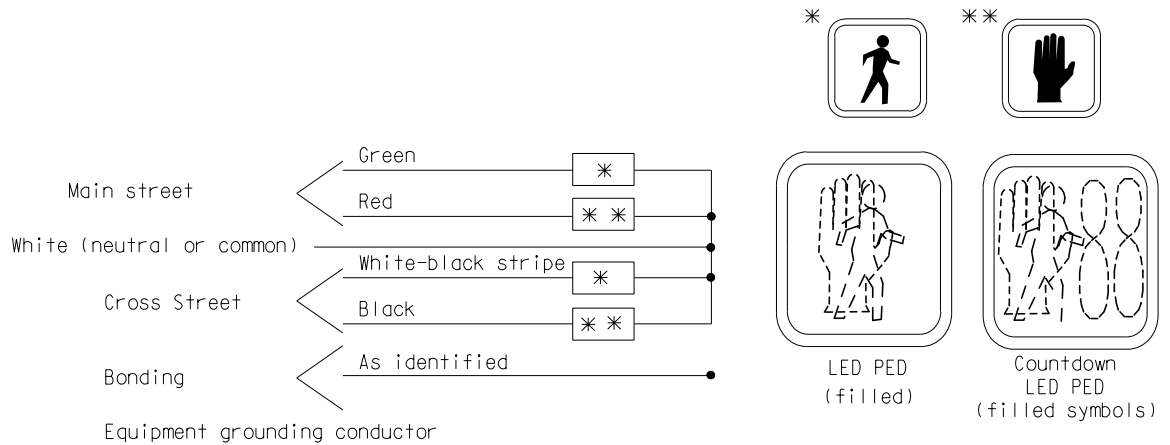
ENGLISH VERSION

 Michigan Department of Transportation	PREPARED BY TRAFFIC AND SAFETY
	ENGINEER OF TRAFFIC AND SAFETY
	DRAWN BY: MTS
	CHECKED BY: JAT
DEPARTMENT DIRECTOR KIRK T. STEUDLE	MDOT\Projectwise\Documents\Reference Documents\Traffic Reference\Signals\Wayne County Special Details\Develop



COLOR CODE FOR WIRING CONNECTING TRAFFIC SIGNAL LAMPS

NOTE: No splices allowed between traffic signal head and controller.



COLOR CODE FOR WIRING CONNECTING PEDESTRIAN SIGNAL LAMPS (WALKING PERSON – HAND SYMBOL)

NOT TO SCALE

File: PW:RD/TR/Signals/Web/WC SD/Final

Rev. 10/21/14



PREPARED BY
TRAFFIC AND SAFETY

DRAWN BY: DJF

CHECKED BY:

ENGINEER OF DELIVERY

ENGINEER OF DEVELOPMENT

(SPECIAL DETAIL)

FHWA APPROVAL DATE

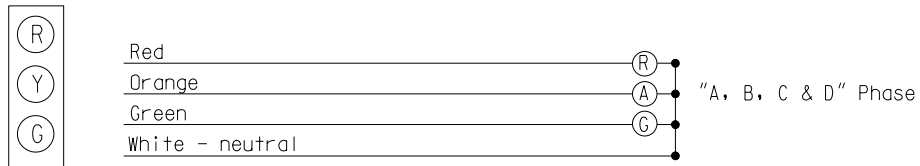
MICHIGAN DEPARTMENT OF TRANSPORTATION
BUREAU OF HIGHWAYS DELIVERY STANDARD PLAN FOR

COLOR CODE WIRING/
EQUIPMENT GROUNDING

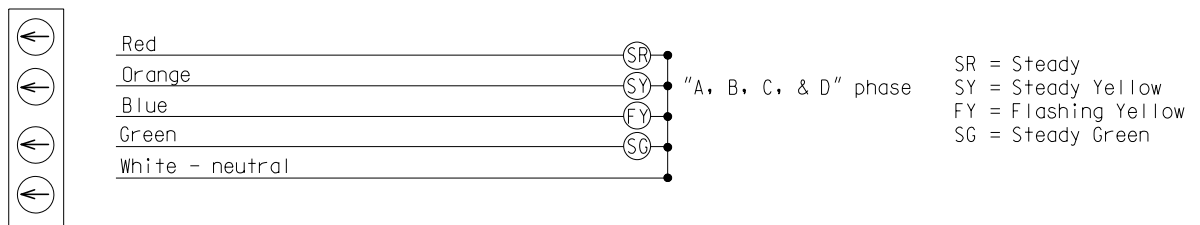
PLAN DATE

WC-026-A

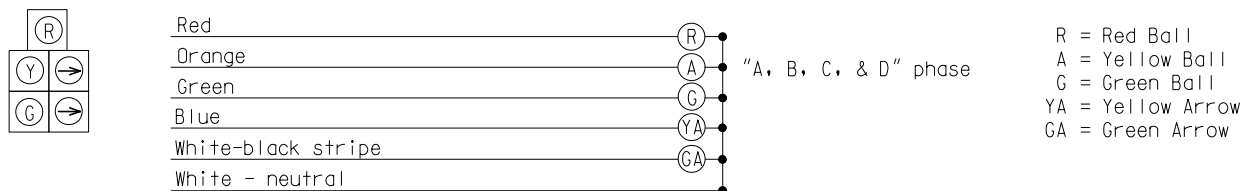
SHEET
1 of 6



STANDARD - 3 COLOR SIGNAL DISPLAY



FLASHING YELLOW ARROW (FYA) - 4 COLOR SIGNAL DISPLAY



DOG HOUSE W/RIGHT TURNS - 5 COLOR SIGNAL DISPLAY

COLOR CODE FOR WIRING CONNECTING TRAFFIC SIGNAL LAMPS

NOT TO SCALE

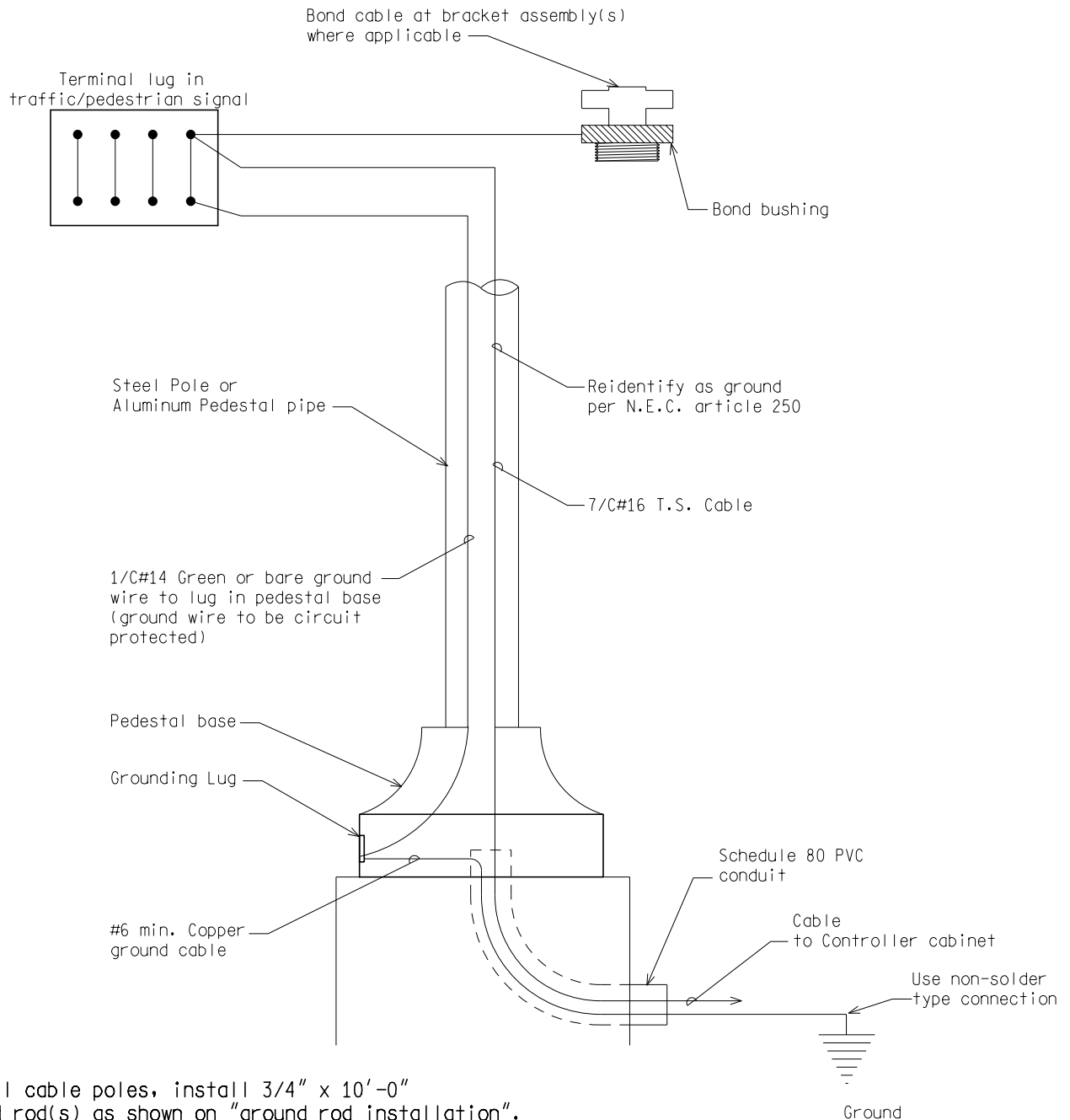
MICHIGAN DEPARTMENT OF TRANSPORTATION
BUREAU OF HIGHWAYS DELIVERY STANDARD PLAN

(SPECIAL DETAIL)
FHWA APPROVAL DATE

PLAN DATE

WC-026-A

SHEET
2 of 6



NOTE:
 For all cable poles, install 3/4" x 10'-0"
 ground rod(s) as shown on "ground rod installation".
 Connect ground rod(s) with #6 min. copper wire to
 messenger wire with non-solder type connection.

STEEL POLE/PEDESTAL GROUNDING DETAIL

NOT TO SCALE

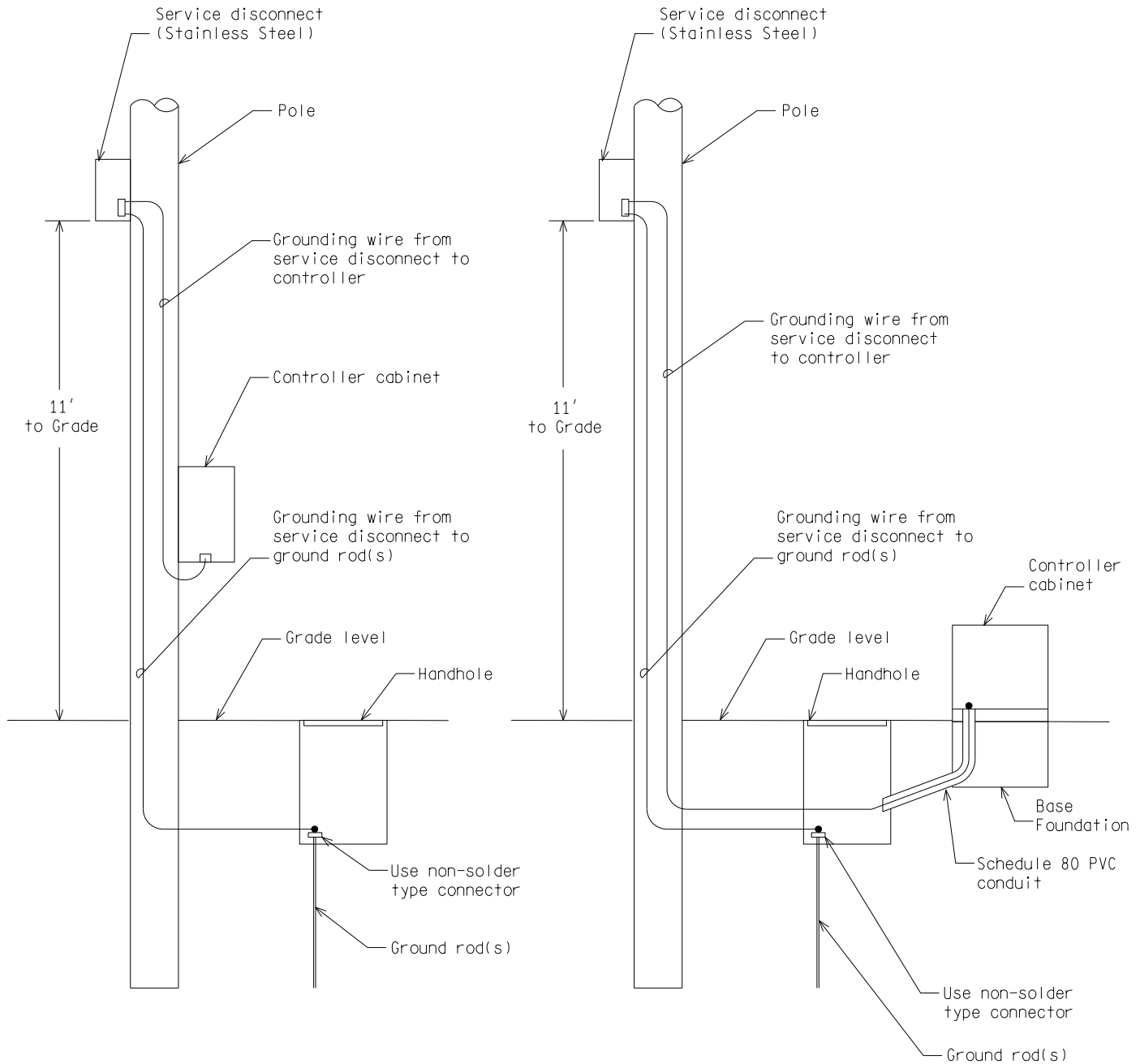
MICHIGAN DEPARTMENT OF TRANSPORTATION
 BUREAU OF HIGHWAYS DELIVERY STANDARD PLAN

(SPECIAL DETAIL)
 FHWA APPROVAL DATE

PLAN DATE

WC-026-A

SHEET
 3 of 6



GROUNDING

Install 3/4 " x 10'-0" copper clad ground rod(s) as required to provide less than 10 OHM resistance to ground.

Grounding wire #6 AWG min. bare copper grounding wire shall be installed to meet N.E.C. and utility company specs.

Ground wire from disconnect to ground rod to be in moulding (wood pole or post) or inside the pole (steel). Ground wire from disconnect to controller cabinet to be in conduit (wood pole, wood post, and steel pole).

CONTROLLER CABINET GROUNDING DETAIL

NOT TO SCALE

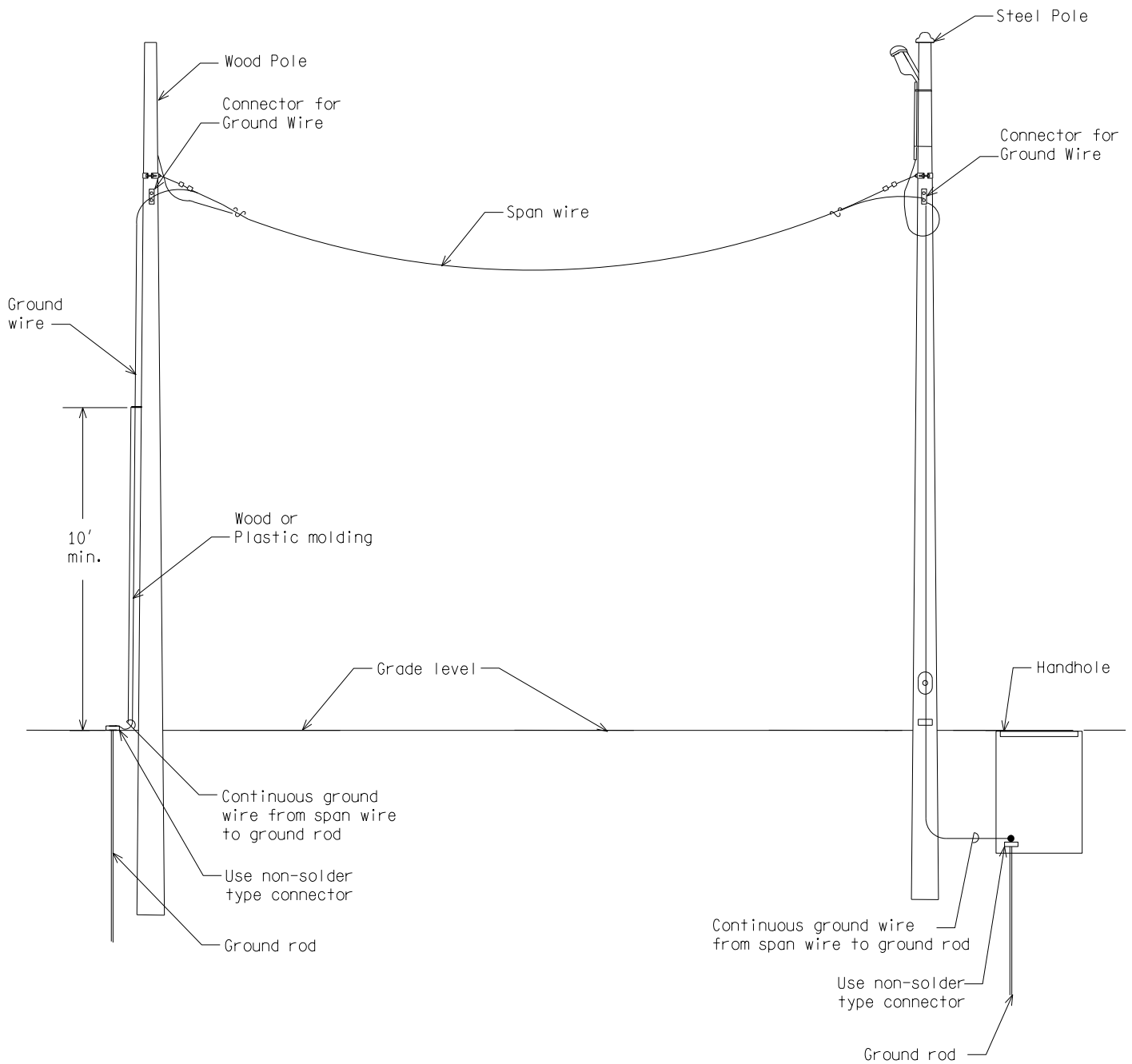
MICHIGAN DEPARTMENT OF TRANSPORTATION
BUREAU OF HIGHWAYS DELIVERY STANDARD PLAN

(SPECIAL DETAIL)
FHWA APPROVAL DATE

PLAN DATE

WC-026-A

SHEET
4 of 6



SPAN WIRE GROUNDING DETAIL

NOT TO SCALE

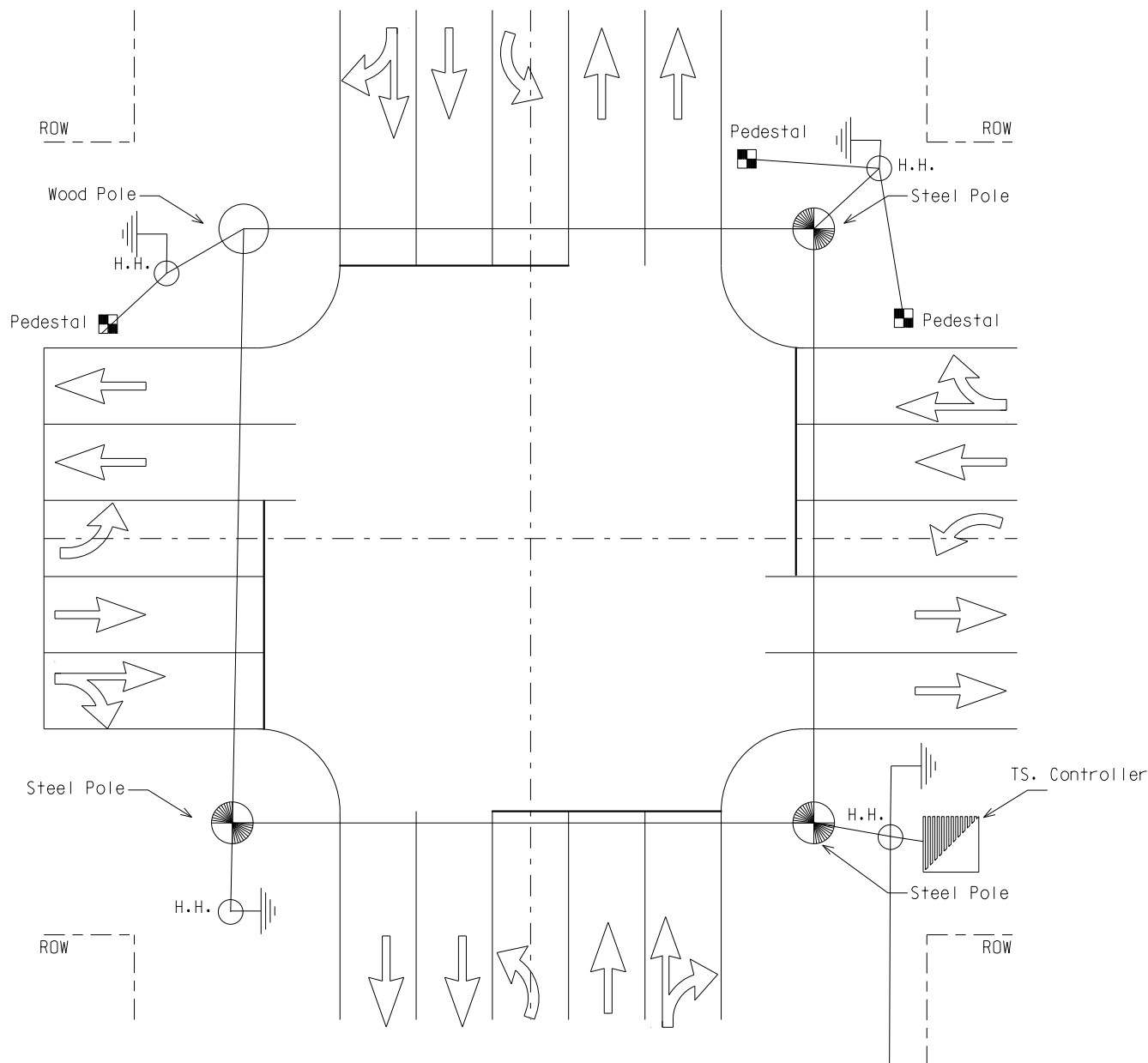
MICHIGAN DEPARTMENT OF TRANSPORTATION
BUREAU OF HIGHWAYS DELIVERY STANDARD PLAN

(SPECIAL DETAIL)
FHWA APPROVAL DATE

PLAN DATE

WC-026-A

SHEET
5 of 6



- 1) All ground rods shall be 3/4" x 10' in length copperclad.
- 2) Ground rods shall be drive straight down, so that only the required portions of the ground rod is exposed to attach the ground wires.
- 3) All ground rods shall be connected to each other or to a span wire with a single #6 AWG copper conductor.
- 4) Each ground wire attaching to a ground rod shall have its own approved acorn type connector.
- 5) Do not install any ground rods within 10' of any other ground rods from other grounding.
- 6) The grounding system shall measure 10 ohms or less.
- 7) A separate #6 AWG copper ground is required from the service disconnect (safety switch) to the ground bussbar in the controller cabinet.
- 8) Ground rod for each steel pole, wood pole, pedestal and/or traffic signal controller cabinet shall be located in the adjacent handhole as indicated on the plans or as directed by the Engineer.
- 9) All metal bases must be connected to a ground rod with a #6 ground wire.

SYSTEM GROUNDING DETAIL

NOT TO SCALE

MICHIGAN DEPARTMENT OF TRANSPORTATION
BUREAU OF HIGHWAYS DELIVERY STANDARD PLAN

(SPECIAL DETAIL)
FHWA APPROVAL DATE

PLAN DATE

WC-026-A

SHEET
6 of 6

CONDUCTOR COLOR	7/C	12/C	16/C	20/C
GREEN	A Ø GREEN	A Ø GREEN	A Ø GREEN	A Ø GREEN
ORANGE	A Ø YELLOW	A Ø YELLOW	A Ø YELLOW	A Ø YELLOW
RED	A Ø RED	A Ø RED	A Ø RED	A Ø RED
WHITE W/ BLACK TRACER	B Ø GREEN	B Ø GREEN	B Ø GREEN	B Ø GREEN
BLUE	B Ø YELLOW	B Ø YELLOW	B Ø YELLOW	B Ø YELLOW
BLACK	B Ø RED	B Ø RED	B Ø RED	B Ø RED
WHITE	COMMON	COMMON	COMMON	COMMON
GREEN W/ BLACK TRACER		C Ø GREEN	C Ø GREEN	C Ø GREEN
ORANGE W/ BLACK TRACER		C Ø YELLOW	C Ø YELLOW	C Ø YELLOW
RED W/ BLACK TRACER		C Ø RED	C Ø RED	C Ø RED
BLUE W/ BLACK TRACER		CASE SIGN COMMON	CASE SIGN COMMON	CASE SIGN COMMON
BLACK W/ WHITE TRACER		CASE SIGN	CASE SIGN	CASE SIGN
GREEN W/ WHITE TRACER			W-1	W-1
RED W/ WHITE TRACER			DW-1	DW-1
BLUE W/ WHITE TRACER			W-2	W-2
BLACK W/ RED TRACER			DW-2	DW-2
WHITE W/ RED TRACER				D Ø GREEN
ORANGE W/ RED TRACER				D Ø YELLOW
BLUE W/ RED TRACER				D Ø RED
RED W/GREEN TRACER				FLASHING YELLOW

WHEN USING CABLES FOR PEDESTRIAN SIGNALS, USE GREEN & RED FOR **W-1** WALK AND DON'T WALK,
AND USE WHITE W/ BLACK TRACER AND BLACK FOR **W-2** WALK AND DON'T WALK

NOT TO SCALE

File: PW:RD/TR/Signals/Web/WC SD/Final

Rev. 10/21/14



PREPARED BY
TRAFFIC AND SAFETY

DRAWN BY:

CHECKED BY:

ENGINEER OF DELIVERY

ENGINEER OF DEVELOPMENT

FHWA APPROVAL DATE

MICHIGAN DEPARTMENT OF TRANSPORTATION
BUREAU OF HIGHWAYS DELIVERY STANDARD PLAN FOR
**COLOR CODE FOR WIRING
CONNECTING SIGNAL LAMPS**

PLAN DATE

WC-026-B

SHEET
1 of 1

6063-T6 alloy, 4" x .237"
wall schedule 40-3.73 #/ft.
spun finish.

Pedestal

PEDESTAL

Variable

Ground lug

SQUARE BASE
BOTTOM PLAN

12 3/4"
Bolt circle

Pedestal collar
for square base

PEDESTAL COLLAR

Roll pin

Socket HD. bolt

NOTE:

- 1) Use pedestal collar for pedestal length of $\geq 14'$
(typical for 3-color traffic signal in combination
with pedestrian signal)

3/8"x1 1/4" stainless
steel set screw

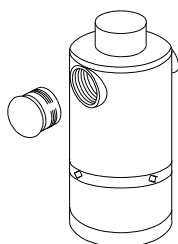
Cover held in place with a
5/16"-18x1" Hex head 300 grade
stainless steel machine screw.

Frangible Square
aluminum base

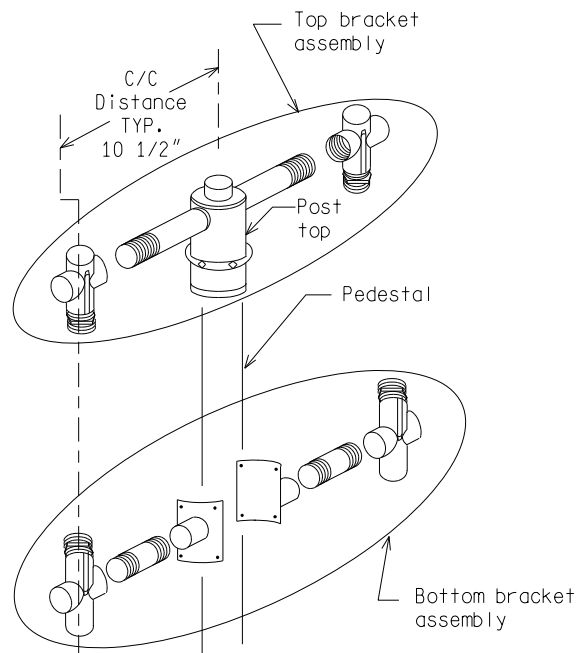
SQUARE ALUMINUM BASE

15" Nominal

13 5/8"



POST TOP
(SLIP FITTER)



SIGNAL MOUNTING HARDWARE - STANDARD BRACKET

TRAFFIC/PEDESTRIAN SIGNAL MOUNTING HARDWARE

NOT TO SCALE

File: PW:RD/TR/Signals/Web/WC SD/Final

Rev. 10/21/14



PREPARED BY
TRAFFIC AND SAFETY

ENGINEER OF DELIVERY

ENGINEER OF DEVELOPMENT

MICHIGAN DEPARTMENT OF TRANSPORTATION
BUREAU OF HIGHWAYS DELIVERY STANDARD PLAN FOR
PEDESTAL FOUNDATION AND
SIGNAL MOUNTING DETAILS

DRAWN BY:

(SPECIAL DETAIL)

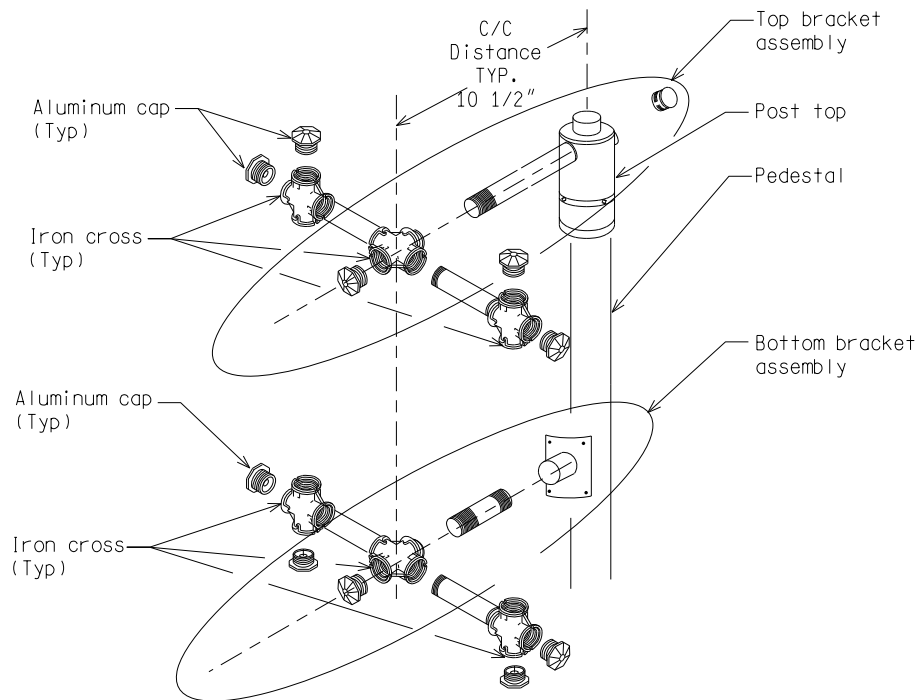
CHECKED BY:

FHWA APPROVAL DATE

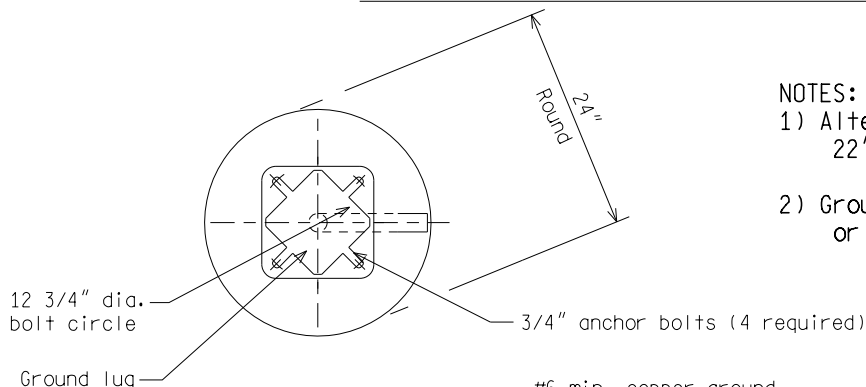
PLAN DATE

WC-028-B

SHEET
1 of 3

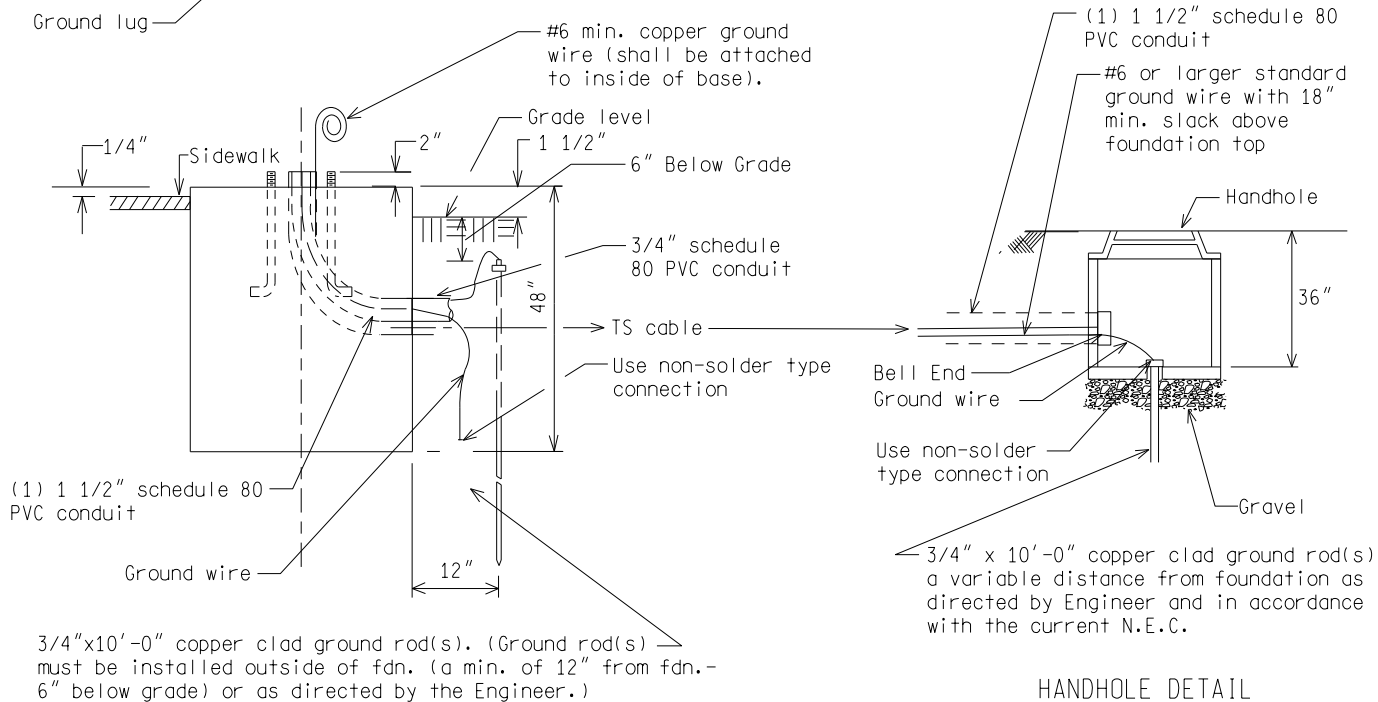


SIGNAL MOUNTING HARDWARE FOR BACKSIDE BRACKET



NOTES:

- 1) Alternate foundation may be constructed 22"x22" square - 48" deep.
- 2) Grounding system shall measure 10 ohm or less to ground.



PEDESTAL FOUNDATION

HANDHOLE DETAIL

NOT TO SCALE

MICHIGAN DEPARTMENT OF TRANSPORTATION
BUREAU OF HIGHWAYS DELIVERY STANDARD PLAN

(SPECIAL DETAIL)
FHWA APPROVAL DATE

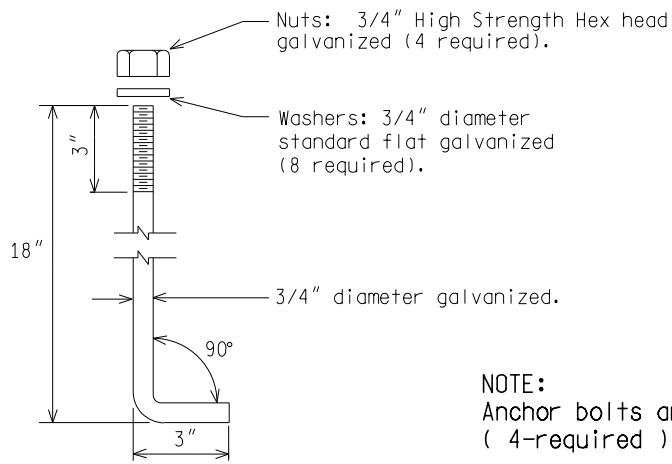
File: PW:RD/TR/Signals/Web/WC SD/Final

Rev. 10/21/14

PLAN DATE

WC-028-B

SHEET
2 of 3



NOTE:
Anchor bolts are to be ASTM A-307 steel
(4-required)

ANCHOR BOLT DETAIL

NOT TO SCALE

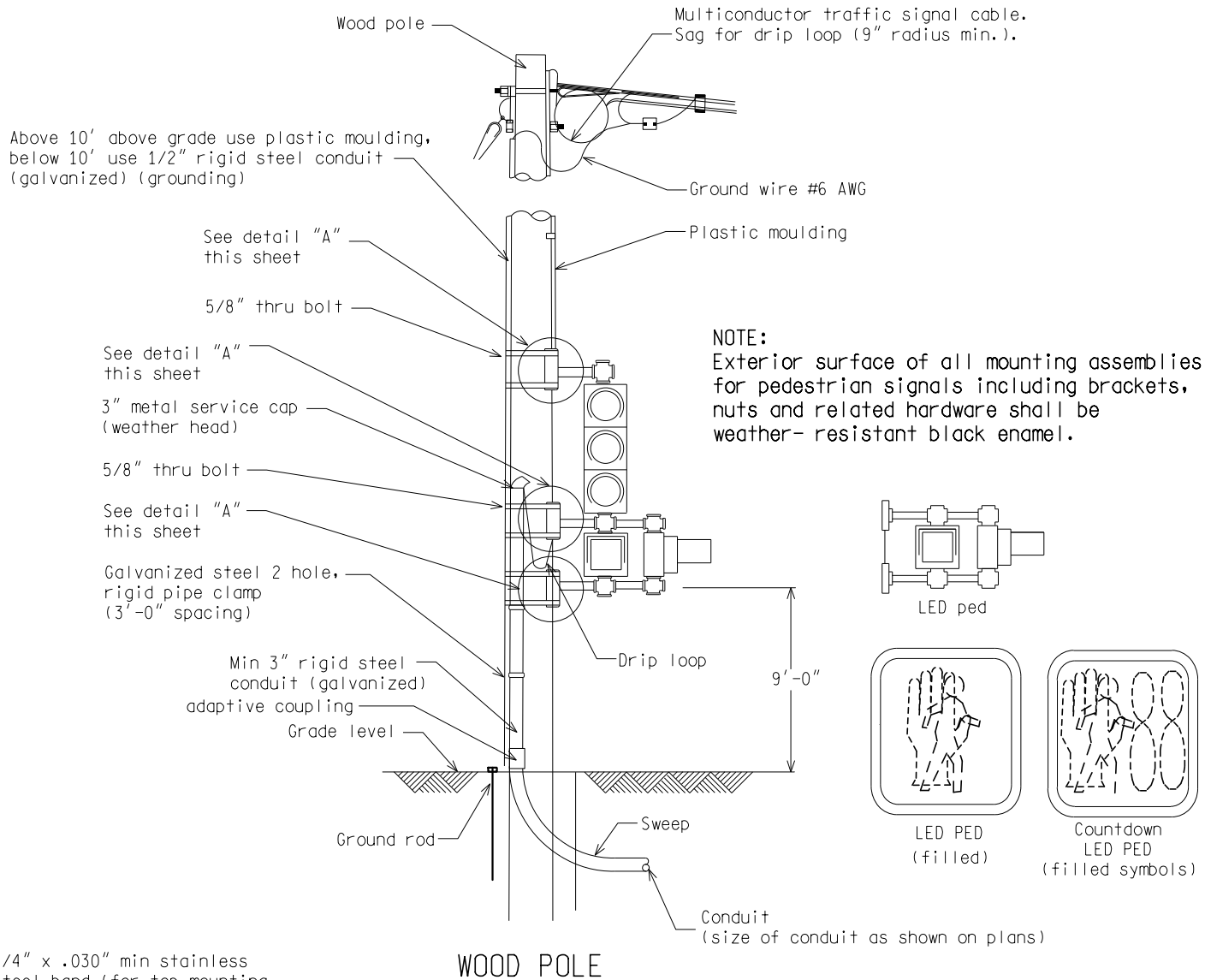
MICHIGAN DEPARTMENT OF TRANSPORTATION
BUREAU OF HIGHWAYS DELIVERY STANDARD PLAN

(SPECIAL DETAIL)
FHWA APPROVAL DATE

PLAN DATE

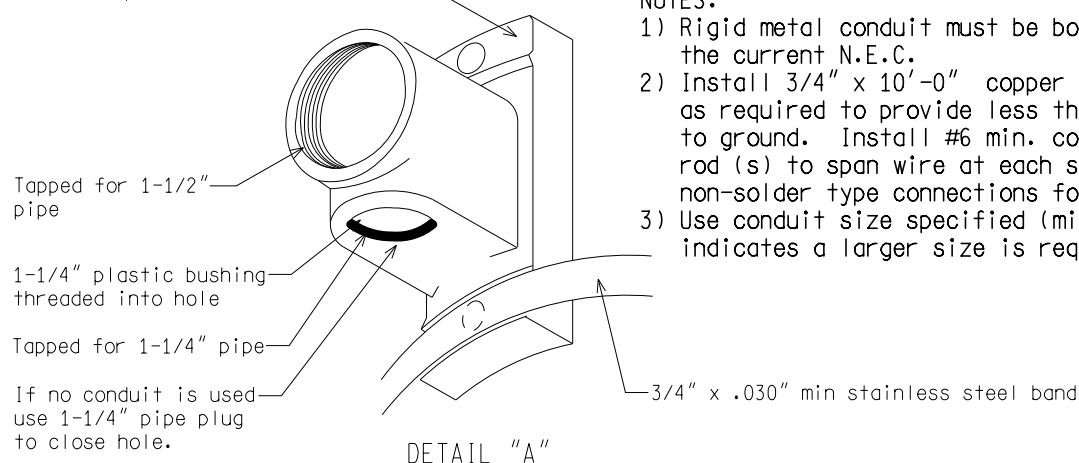
WC-028-B

SHEET
3 of 3



3/4" x .030" min stainless
steel band (for top mounting
bracket use 5/8" thru-bolt
on top, use band on bottom.
See "wood pole" detail this sheet)

WOOD POLE



NOTES:

- 1) Rigid metal conduit must be bonded according to the current N.E.C.
- 2) Install 3/4" x 10'-0" copper clad ground rod (s) as required to provide less than 10 ohm resistance to ground. Install #6 min. copper wires from ground rod (s) to span wire at each supporting pole using non-solder type connections for span wire ground.
- 3) Use conduit size specified (min.) unless current N.E.C. indicates a larger size is required.

NOT TO SCALE

File: PW:RD/TR/Signals/WC SD/Final

Rev. 10/21/14



PREPARED BY
TRAFFIC AND SAFETY

DRAWN BY: DJF

CHECKED BY:

ENGINEER OF DELIVERY

ENGINEER OF DEVELOPMENT

(SPECIAL DETAIL)

FHWA APPROVAL DATE

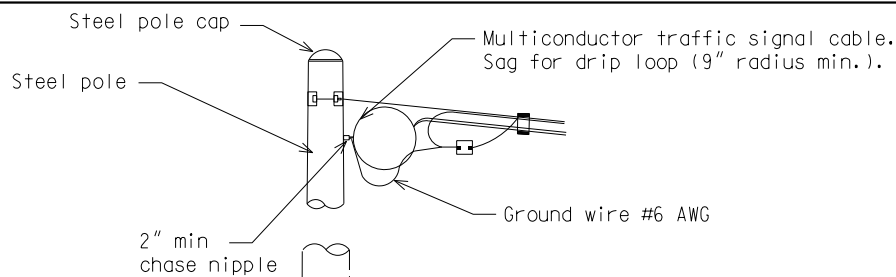
MICHIGAN DEPARTMENT OF TRANSPORTATION
BUREAU OF HIGHWAYS DELIVERY STANDARD PLAN FOR

TYPICAL POLE MOUNTED PEDESTRIAN SIGNALS

WC-029-C

PLAN DATE

SHEET
1 of 4

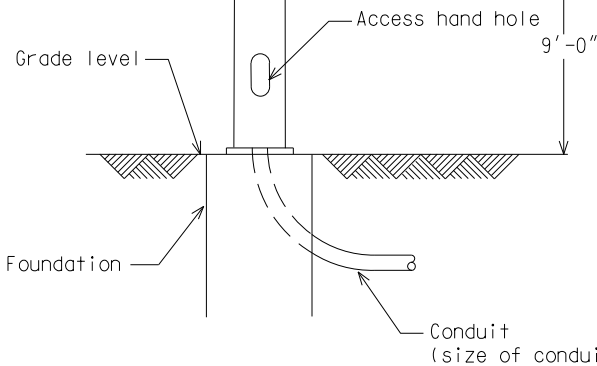


NOTE:
Exterior surface of all mounting assemblies for pedestrian signals including brackets, nuts and related hardware shall be weather-resistant black enamel.

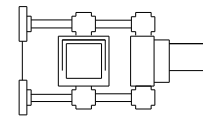
Drill 1-1/2" dia. hole in pole
(screw in plastic gromet)

See detail "B"
this sheet

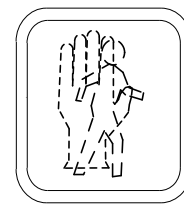
See detail "B"
this sheet



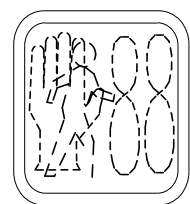
STEEL POLE



LED ped



LED PED
(filled)



Countdown
LED PED
(filled symbols)

1-1/2" horizontal
threaded hub

Where cable enters pole,
insert 1-1/2" plastic
bushing threaded into hole.

3/4" x .030" min.
stainless steel band

DETAIL "B"

NOT TO SCALE

MICHIGAN DEPARTMENT OF TRANSPORTATION
BUREAU OF HIGHWAYS DELIVERY STANDARD PLAN

(SPECIAL DETAIL)
FHWA APPROVAL DATE

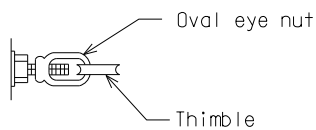
File: PW:RD/TR/Signals/WC SD/Final

Rev. 10/21/14

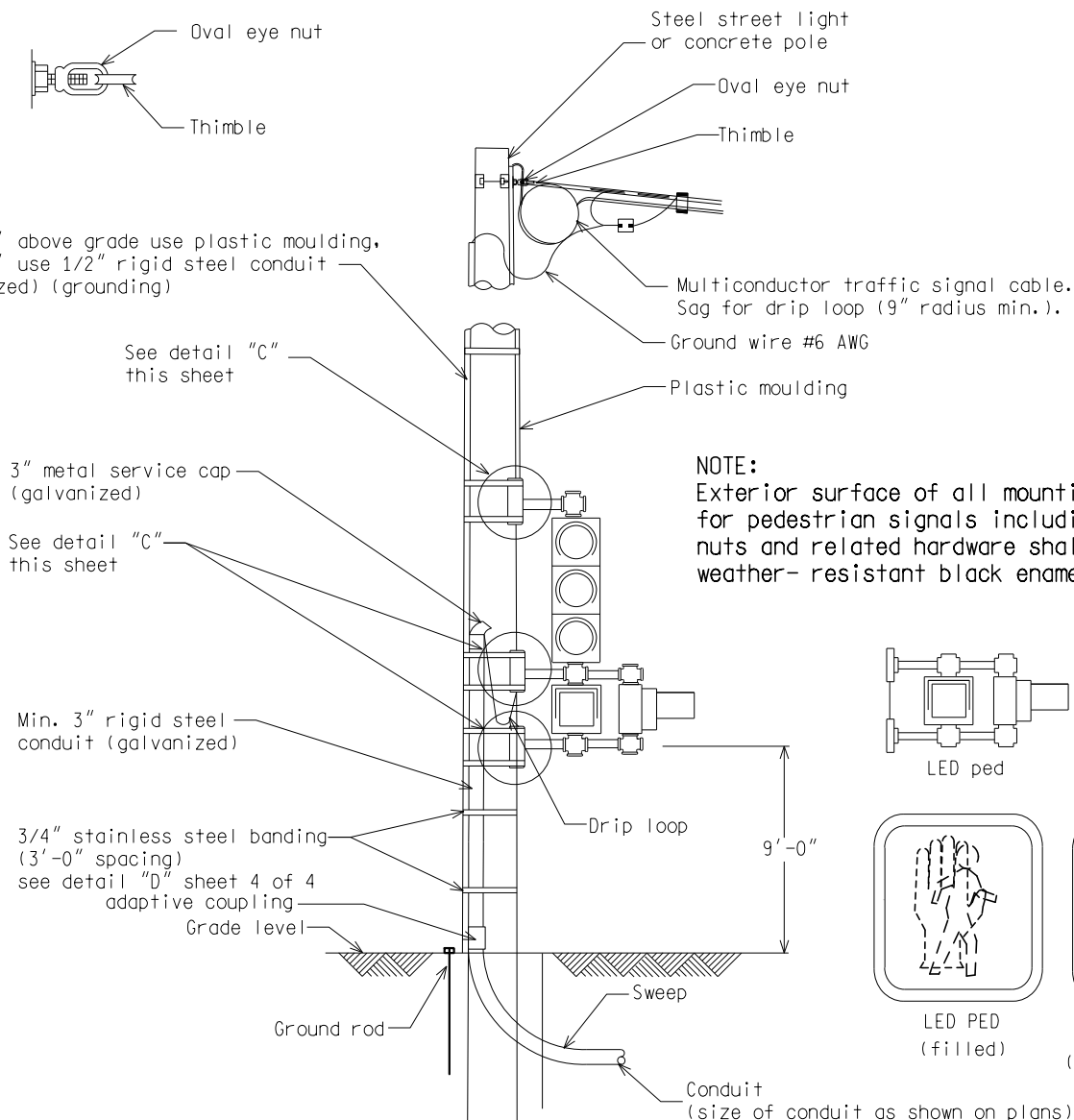
PLAN DATE

WC-029-C

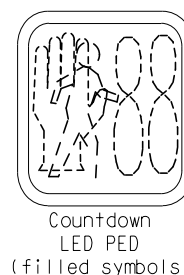
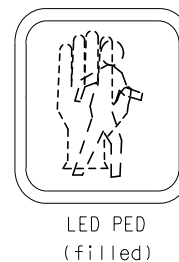
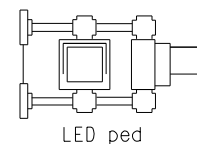
SHEET
2 of 4



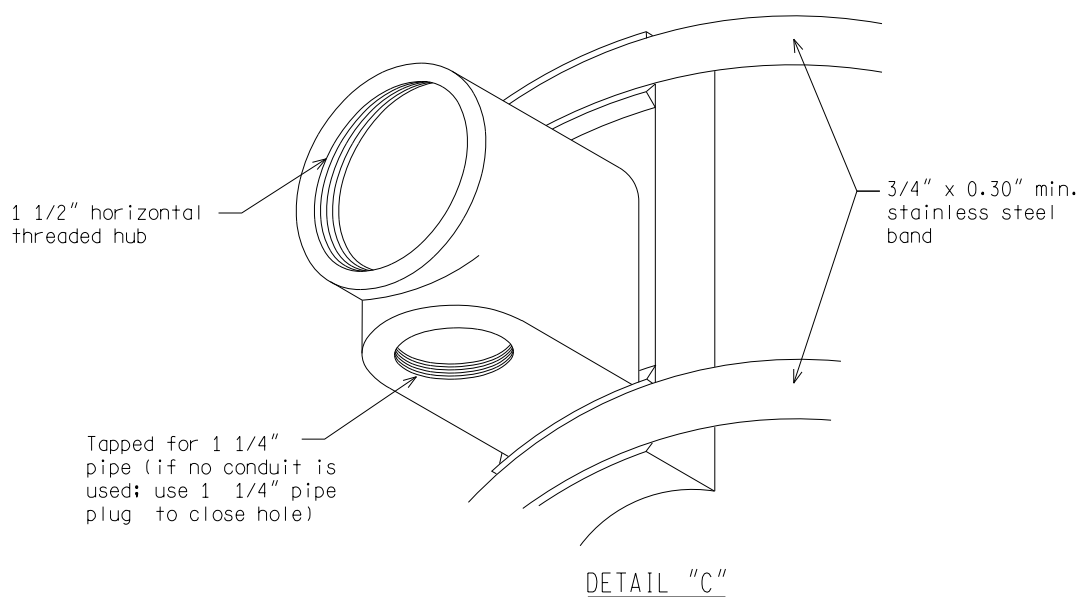
Above 10' above grade use plastic moulding,
below 10' use 1/2" rigid steel conduit
(galvanized) (grounding)



NOTE:
Exterior surface of all mounting assemblies
for pedestrian signals including brackets,
nuts and related hardware shall be
weather-resistant black enamel.



(STEEL STREET POLE OR CONCRETE POLE)



NOT TO SCALE

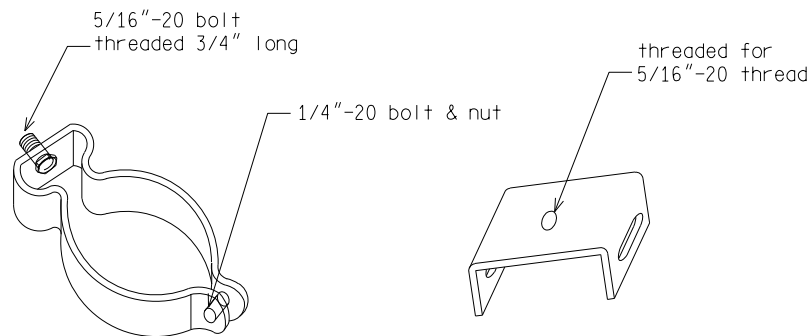
MICHIGAN DEPARTMENT OF TRANSPORTATION
BUREAU OF HIGHWAYS DELIVERY STANDARD PLAN

(SPECIAL DETAIL)
FHWA APPROVAL DATE

PLAN DATE

WC-029-C

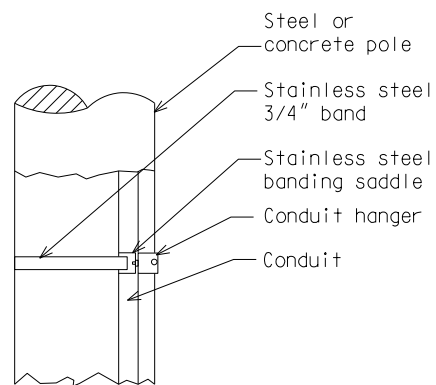
SHEET
3 of 4



HANGER

To fit conduit size hanger
as called for on plans
(zinc plated)

BANDING SADDLE



DETAIL "D"

TYPICAL CONDUIT ATTACHMENT
TO STEEL OR CONCRETE POLE

NOT TO SCALE

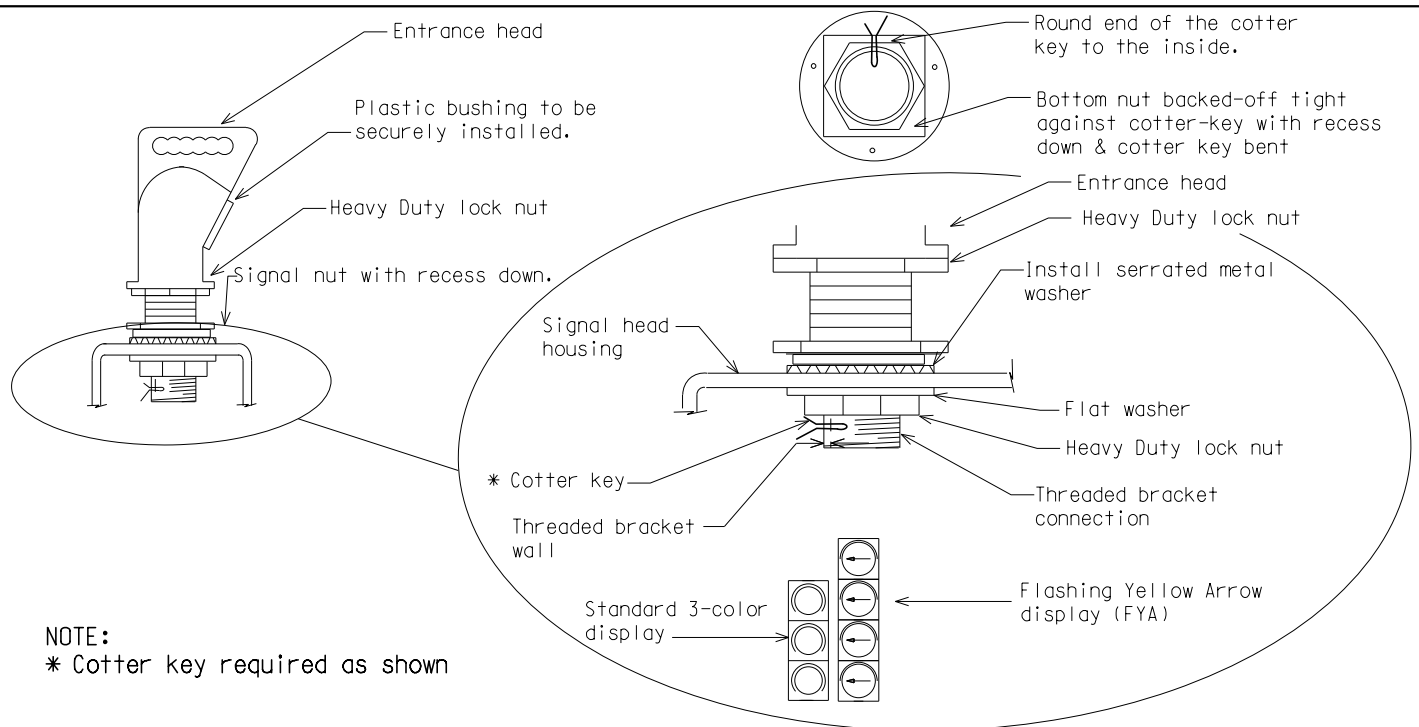
MICHIGAN DEPARTMENT OF TRANSPORTATION
BUREAU OF HIGHWAYS DELIVERY STANDARD PLAN

(SPECIAL DETAIL)
FHWA APPROVAL DATE

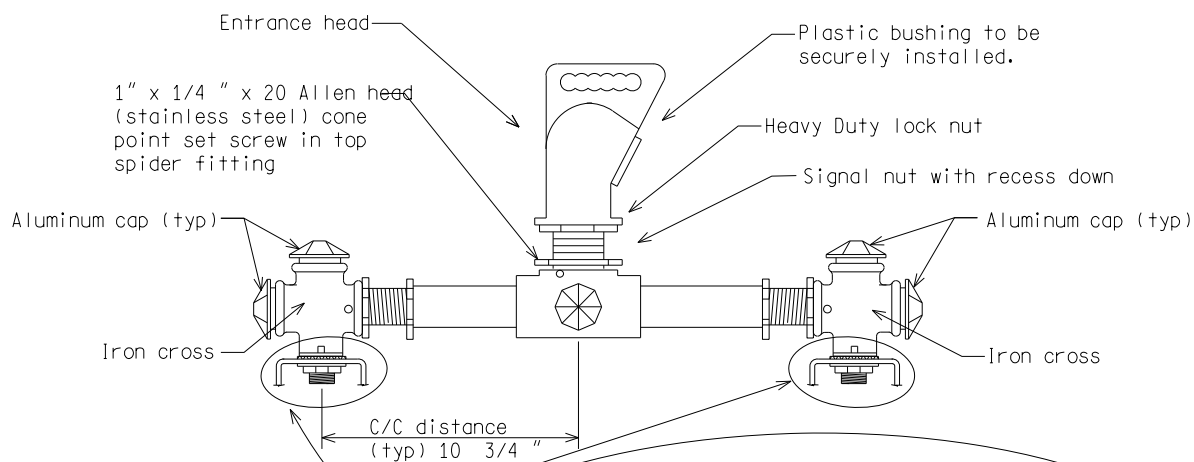
PLAN DATE

WC-029-C

SHEET
4 of 4



ONE-WAY TRAFFIC SIGNAL HEAD



MULTIPLE-WAY TRAFFIC SIGNAL HEAD(S)

NOT TO SCALE

File: PW:RD/TR/Signals/WC SD/Final

Rev. 10/21/14



PREPARED BY
TRAFFIC AND SAFETY

DRAWN BY: DJF

CHECKED BY:

ENGINEER OF DELIVERY

ENGINEER OF DEVELOPMENT

(SPECIAL DETAIL)

FHWA APPROVAL DATE

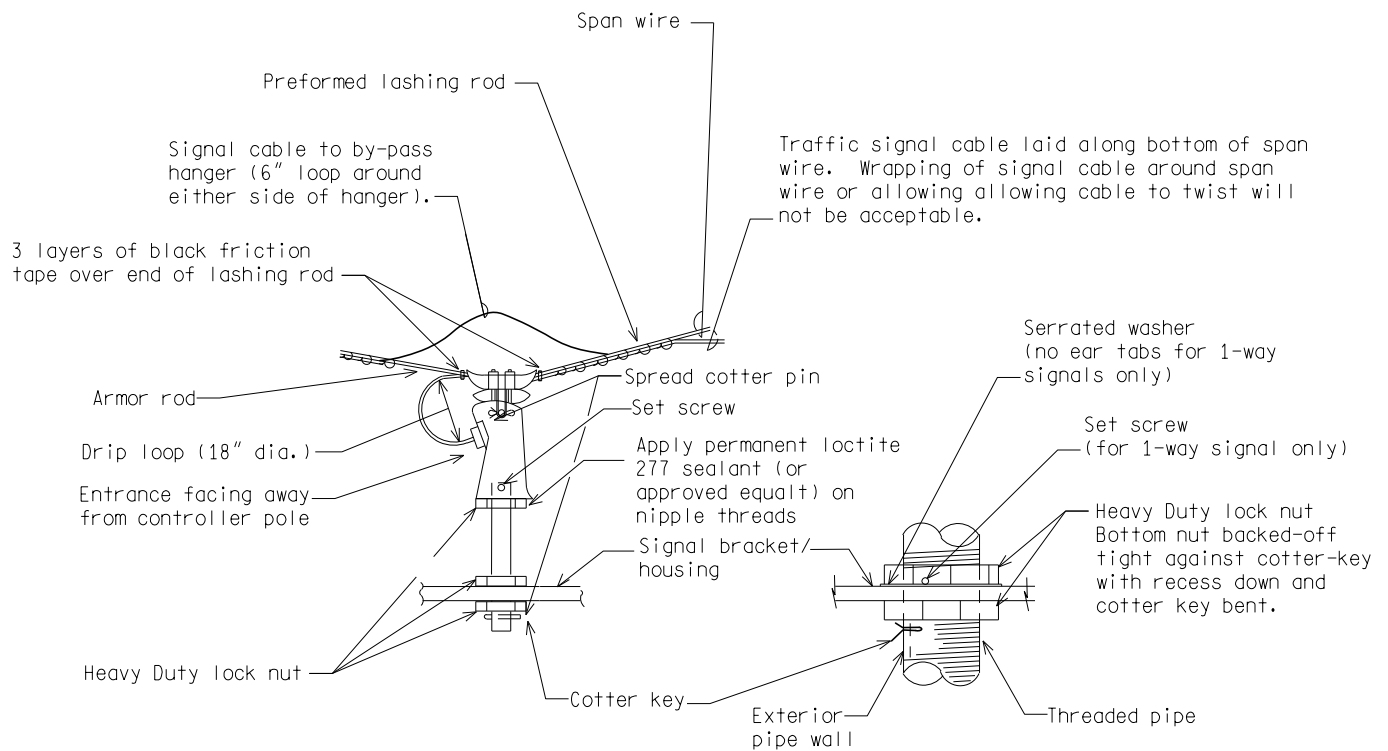
MICHIGAN DEPARTMENT OF TRANSPORTATION
BUREAU OF HIGHWAYS DELIVERY STANDARD PLAN FOR

SPAN WIRE MOUNTED
T.S. BRACKET ASSEMBLY

PLAN DATE

WC-030-A

SHEET
1 of 2



HANGER ATTACHMENT

NOTE:

Exterior surface of all mounting assembly located below span clamps, including stems, lock nuts, and related hardware must match the current FHWA Highway yellow color tolerance chart per the Standard Specifications for Construction.

NOT TO SCALE

MICHIGAN DEPARTMENT OF TRANSPORTATION
BUREAU OF HIGHWAYS DELIVERY STANDARD PLAN

(SPECIAL DETAIL)
FHWA APPROVAL DATE

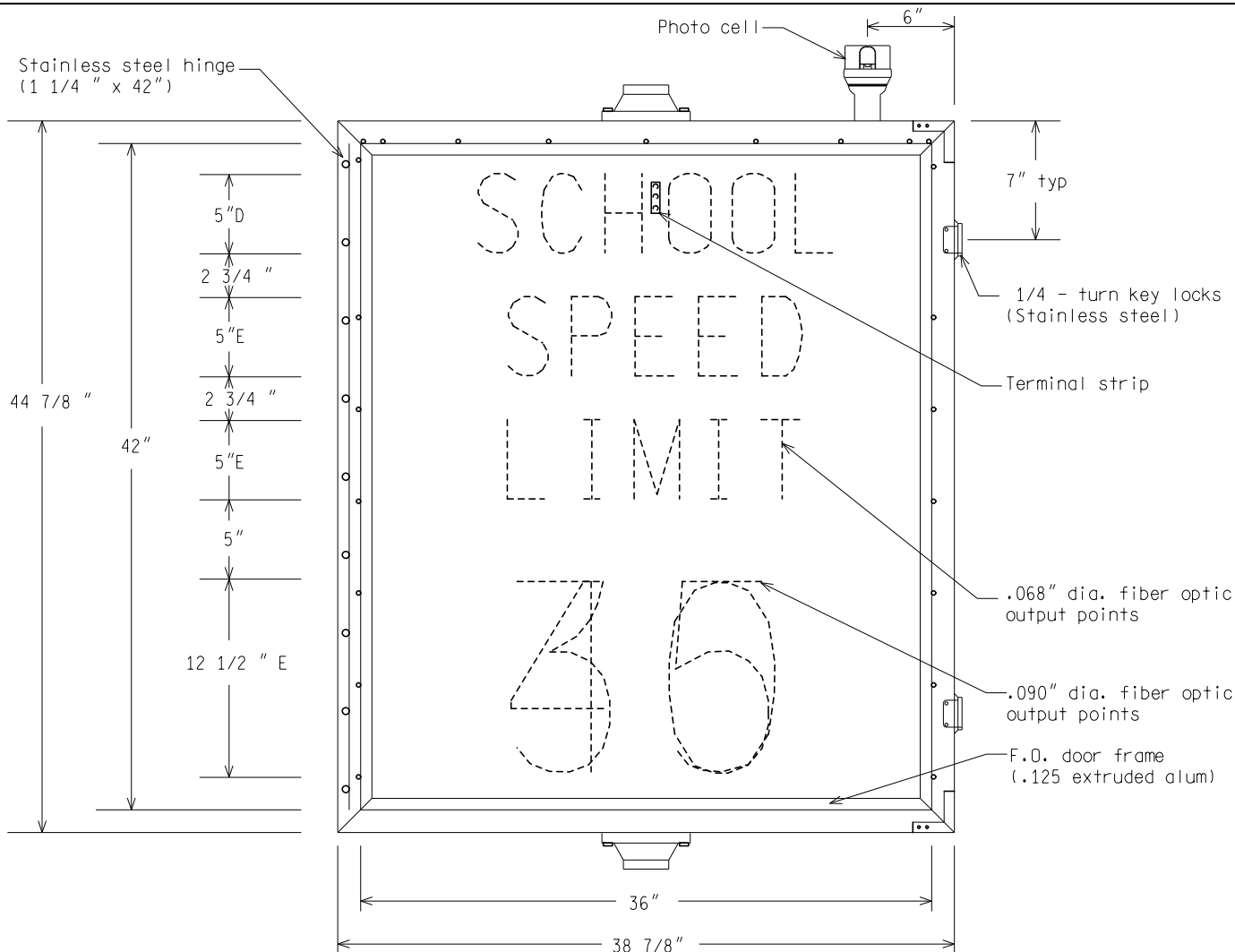
File PW:RD/TR/Signals/WC SD/Final

Rev. 10/21/14

PLAN DATE

WC-030-A

SHEET
2 of 2

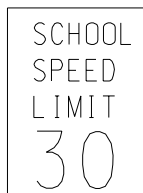


NOTES:

- 1) "SCHOOL SPEED LIMIT" shall be formed by rows of .068" dia. fiber optic bundles spaced at 1/2" O.C. (normal). "45" and "30" shall be 0.90" dia. fiber optic bundle spaced at 5/8" O.C. (normal).
- 2) Message displays and colors:



Message 1
(white)



Message 2
("SCHOOL" - yellow)
("SPEED LIMIT 30" - white)

- 3) Message shall completely blank out when not energized.
- 4) Phase dimmer shall provide a means of manual adjustment for nighttime dimming. Dimming shall be activated by the photocell.
- 5) Sign housing shall be pre-drilled for power entry through top mounting hub.
- 6) Sign shall be equipped with four (4) 3/16" dia. weep holes located in the lower corners of the housing.
- 7) Exterior of housing assembly shall be painted semi-gloss black.
- 8) Approximate weight of sign assembled - 120 lbs.

NOT TO SCALE

File: PW:RD/TR/Signals/WC SD/Final

Rev. 10/21/14



PREPARED BY
TRAFFIC AND SAFETY

DRAWN BY: DJF

CHECKED BY:

ENGINEER OF DELIVERY

ENGINEER OF DEVELOPMENT

(SPECIAL DETAIL)

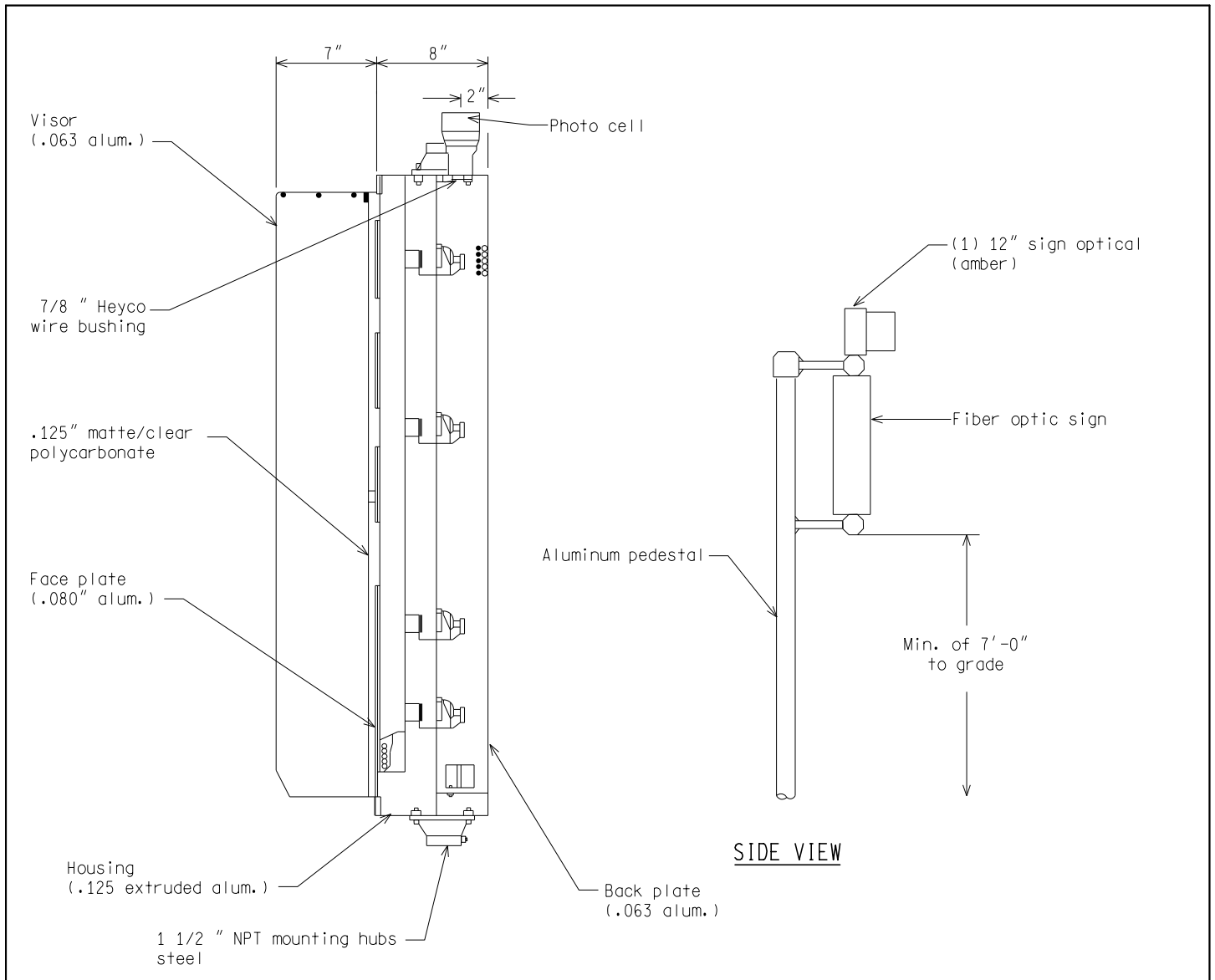
FHWA APPROVAL DATE

MICHIGAN DEPARTMENT OF TRANSPORTATION
BUREAU OF HIGHWAYS DELIVERY STANDARD PLAN FOR
FIBER OPTIC VARIABLE
SPEED LIMIT SIGN

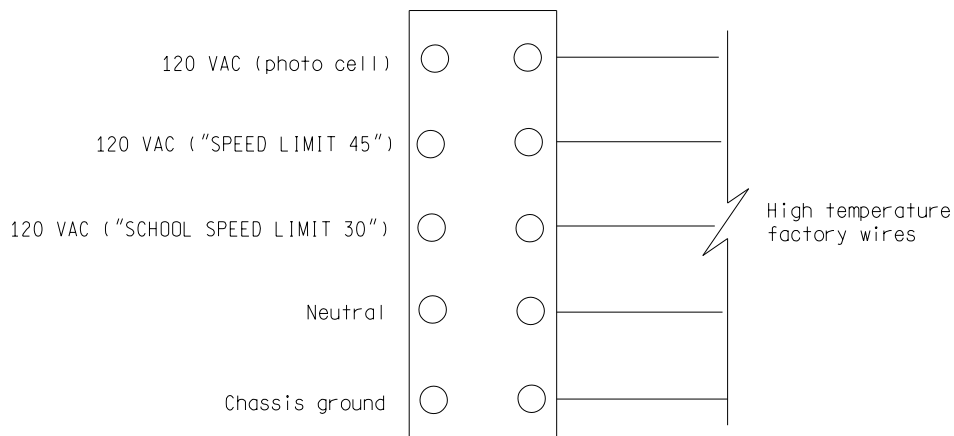
WC-031-A

PLAN DATE

SHEET
1 of 2



FIBER OPTIC VARIABLE SPEED LIMIT SIGN



TERMINAL STRIP CONNECTION

NOT TO SCALE

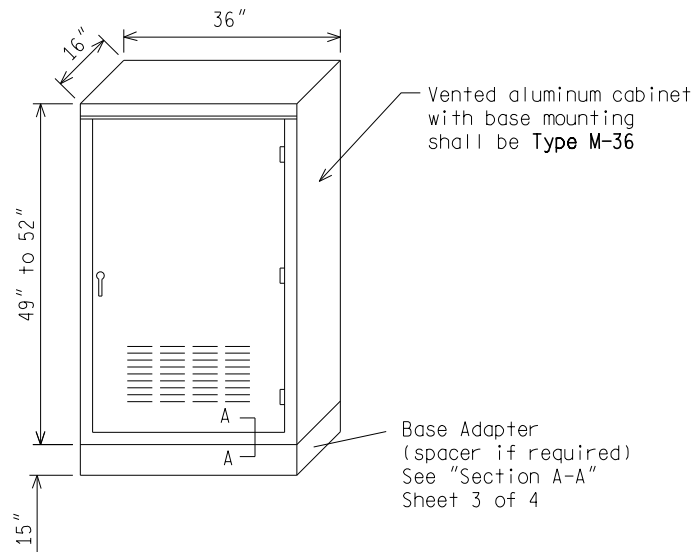
MICHIGAN DEPARTMENT OF TRANSPORTATION
BUREAU OF HIGHWAYS DELIVERY STANDARD PLAN

(SPECIAL DETAIL)
FHWA APPROVAL DATE

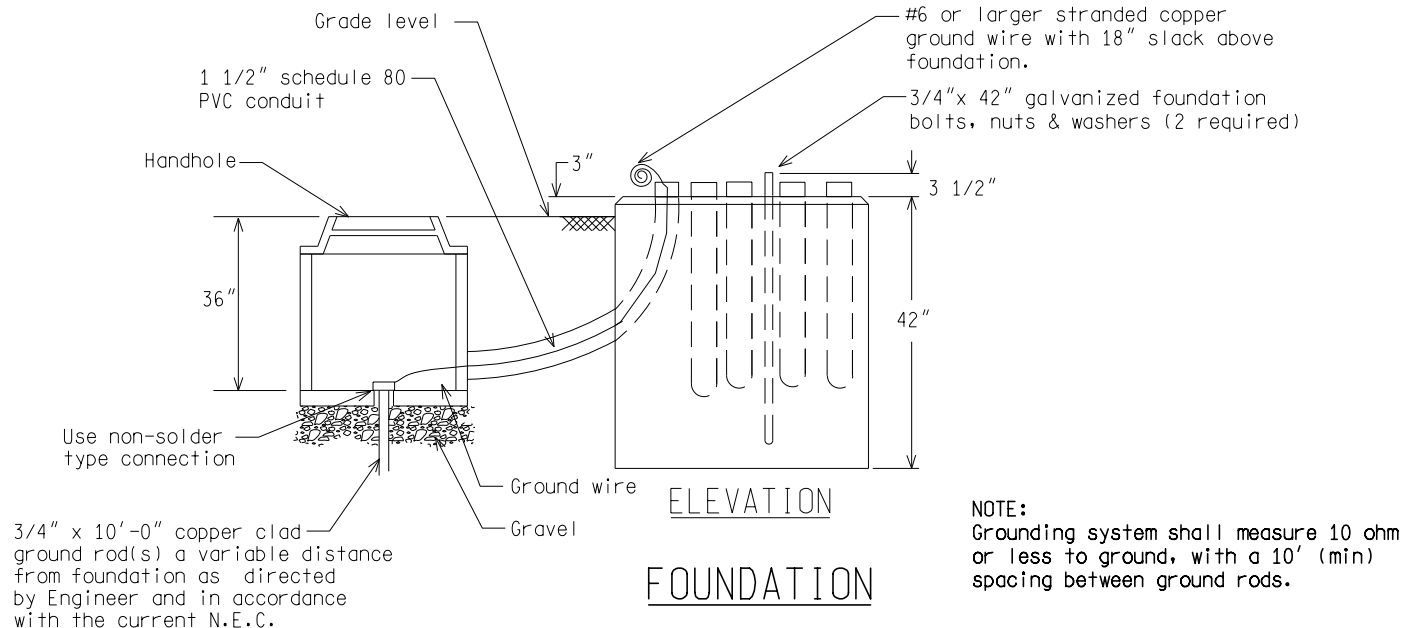
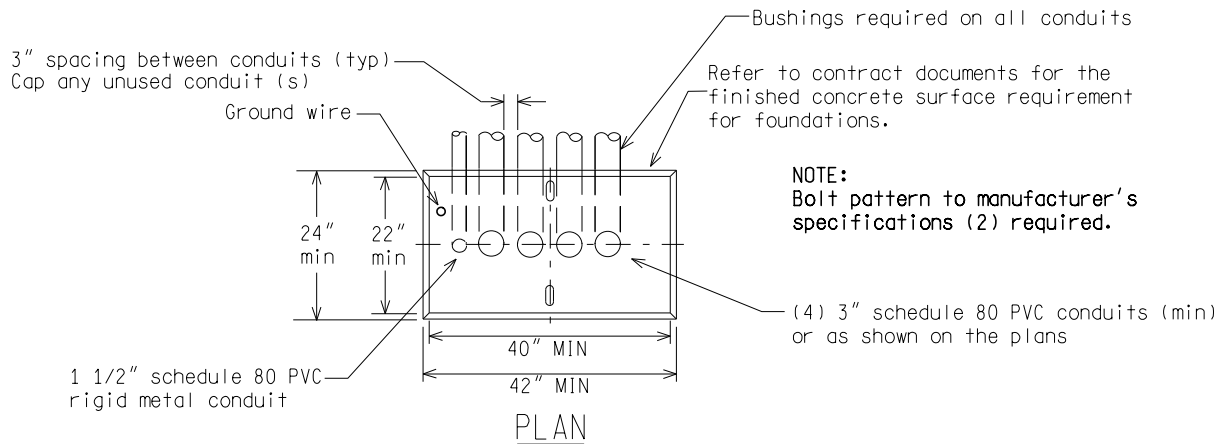
PLAN DATE

WC-031-A

SHEET
2 of 2



BASE MOUNTED TRAFFIC SIGNAL CONTROLLER CABINET



NOT TO SCALE

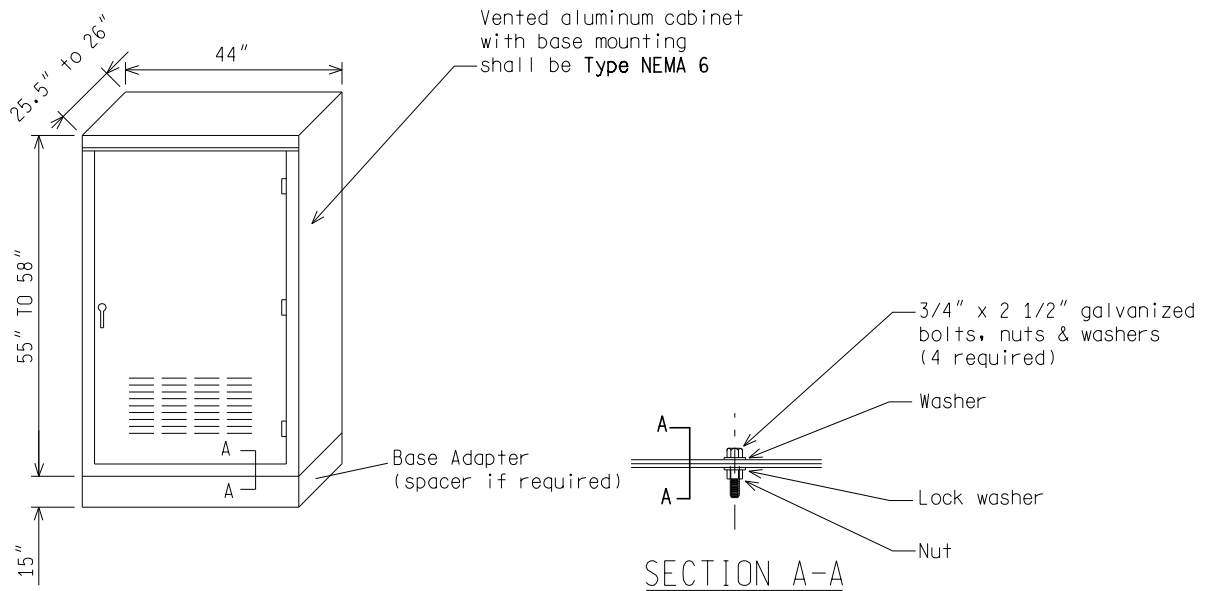
MICHIGAN DEPARTMENT OF TRANSPORTATION
BUREAU OF HIGHWAYS DELIVERY STANDARD PLAN

(SPECIAL DETAIL)
FHWA APPROVAL DATE

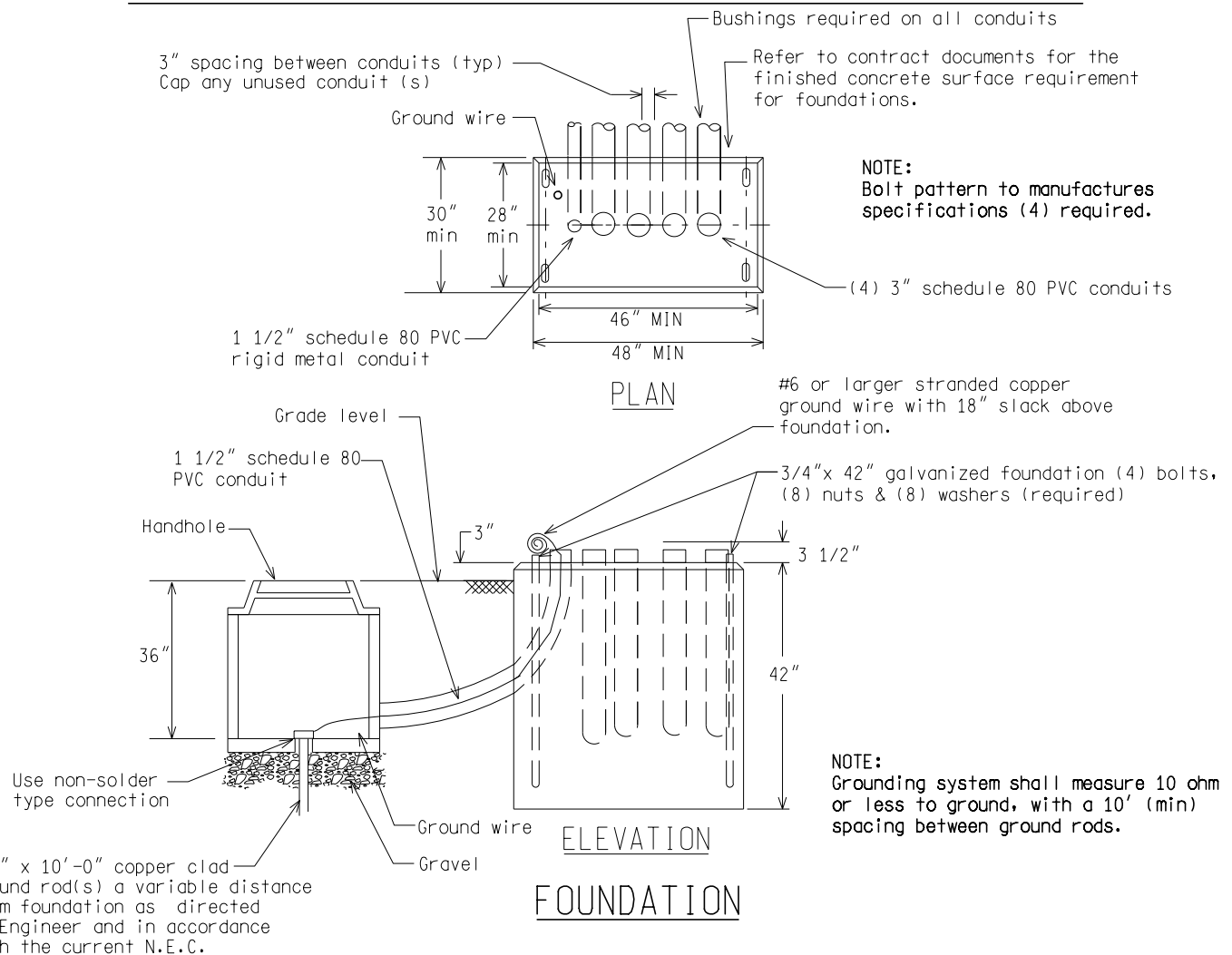
PLAN DATE

WC-045-A

SHEET
2 of 4



BASE MOUNTED TRAFFIC SIGNAL CONTROLLER CABINET



NOT TO SCALE

MICHIGAN DEPARTMENT OF TRANSPORTATION
BUREAU OF HIGHWAYS DELIVERY STANDARD PLAN

(SPECIAL DETAIL)
FHWA APPROVAL DATE

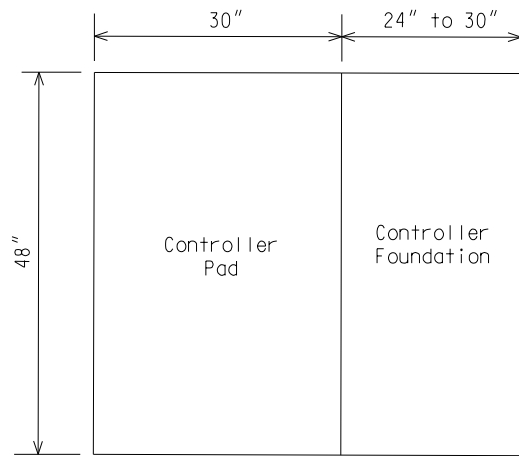
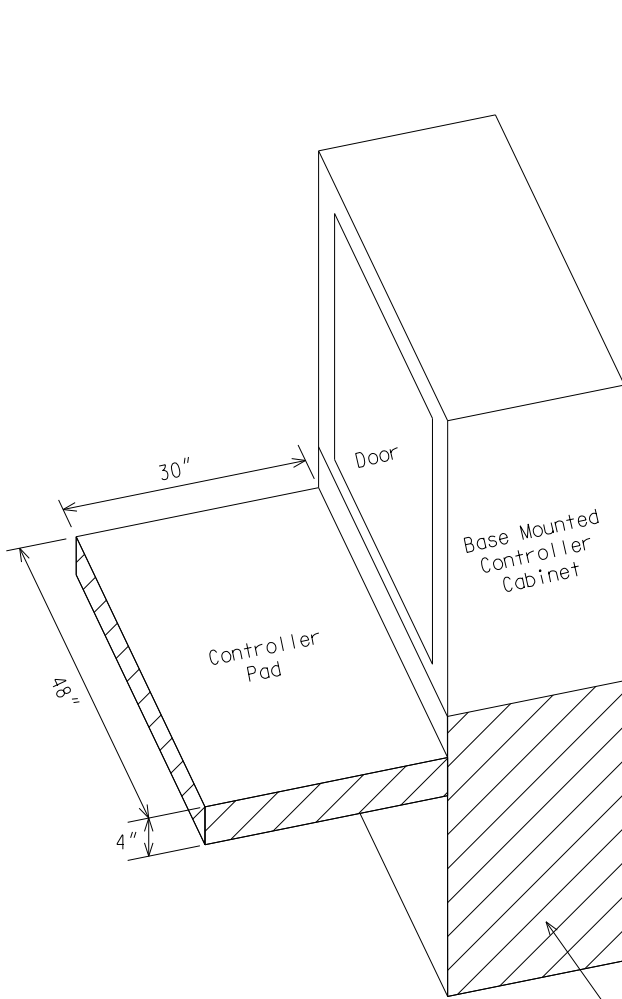
File: PW:RD/TR/Signals/WC SD/Final

Rev. 10/21/14

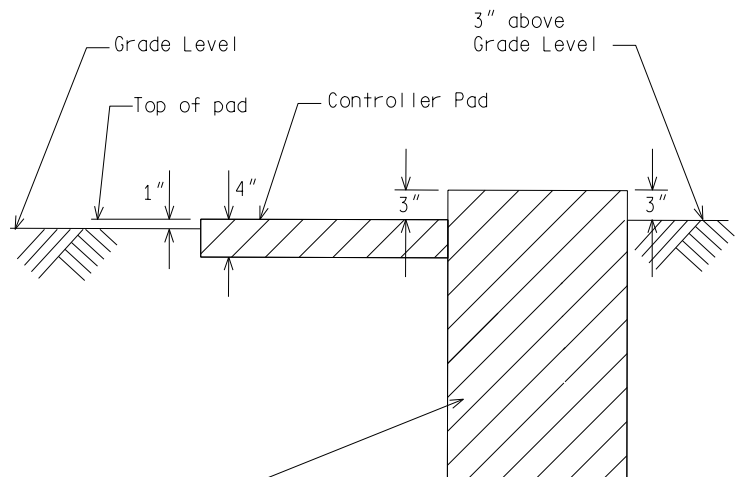
PLAN DATE

WC-045-A

SHEET
3 of 4



TOP VIEW



SIDE VIEW

BASE MOUNTED CONTROLLER PAD

NOTE:

Payment for controller pad to be included in controller foundation pay item.
Controller cabinet door to open toward pad.

NOT TO SCALE

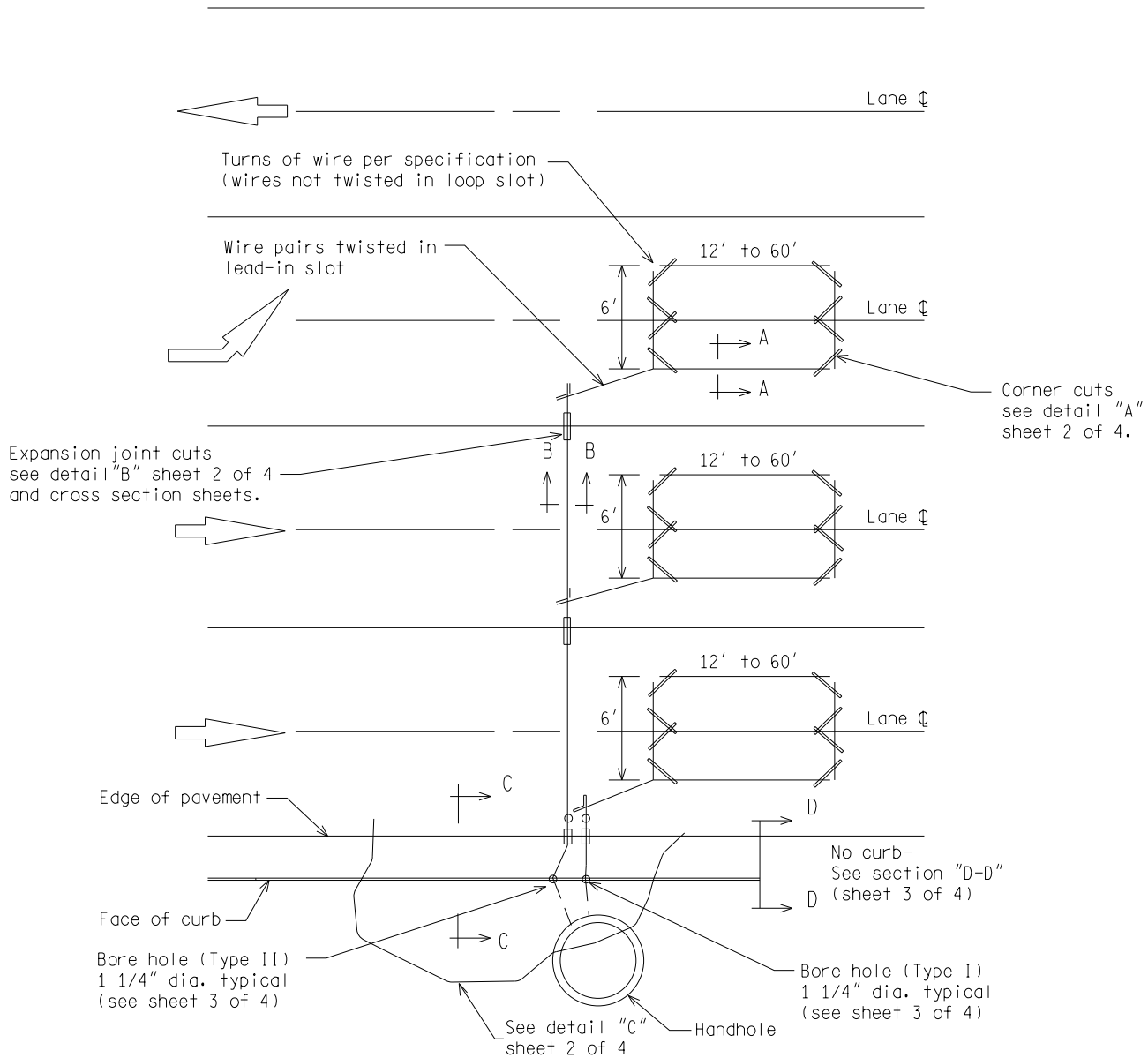
MICHIGAN DEPARTMENT OF TRANSPORTATION
BUREAU OF HIGHWAYS DELIVERY STANDARD PLAN

(SPECIAL DETAIL)
FHWA APPROVAL DATE

PLAN DATE

WC-045-A

SHEET
4 of 4



NOTES:

- 1) Lead-in slot may be on either near or far side of loop approach as directed by the Engineer.
- 2) Two loops maximum allowed per saw cut from loop to curb.
- 3) 3 turns required for loops equal to or greater than 6'x10'.
- 4) 4 turns required for loops less than 6'x10'.
- 5) Refer to contract documents for high pressure washing of saw cuts and removal of debris.

NOT TO SCALE

File: PW:RD/TR/Signals/WC SD/Final

Rev. 10/21/14



PREPARED BY
TRAFFIC AND SAFETY

DRAWN BY:

CHECKED BY:

ENGINEER OF DELIVERY

ENGINEER OF DEVELOPMENT

(SPECIAL DETAIL)

FHWA APPROVAL DATE

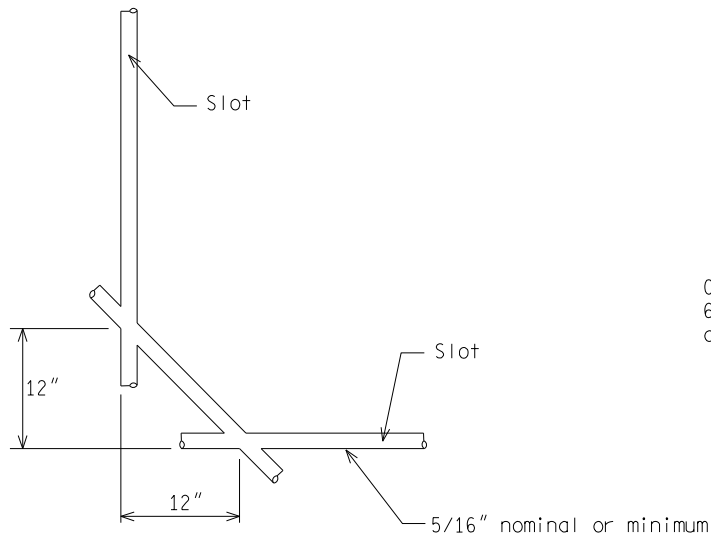
MICHIGAN DEPARTMENT OF TRANSPORTATION
BUREAU OF HIGHWAYS DELIVERY STANDARD PLAN FOR

TRAFFIC LOOPS

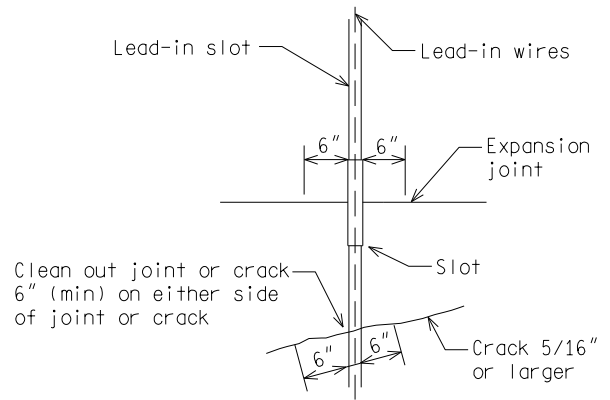
PLAN DATE

WC-170-A

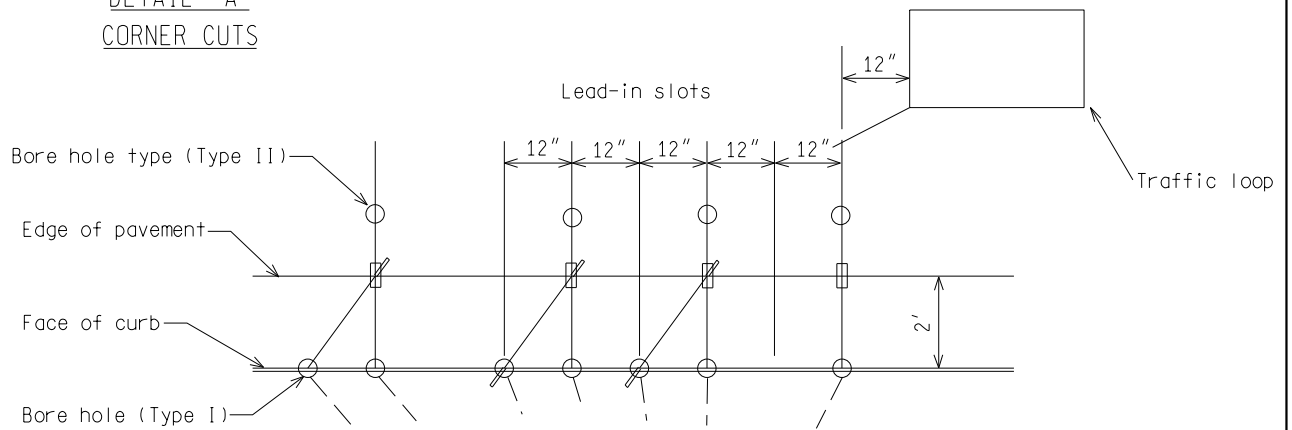
SHEET
1 of 4



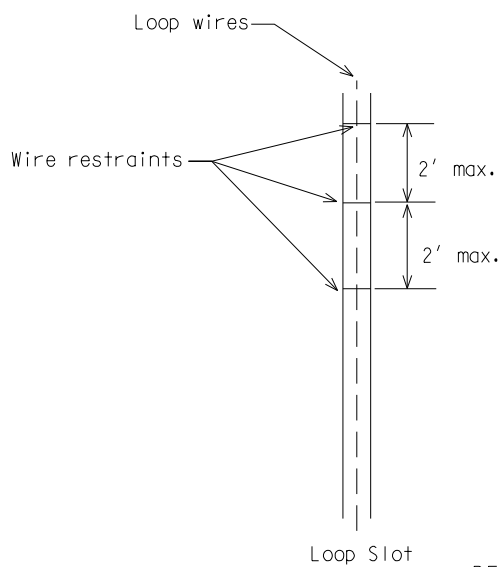
DETAIL "A"
CORNER CUTS



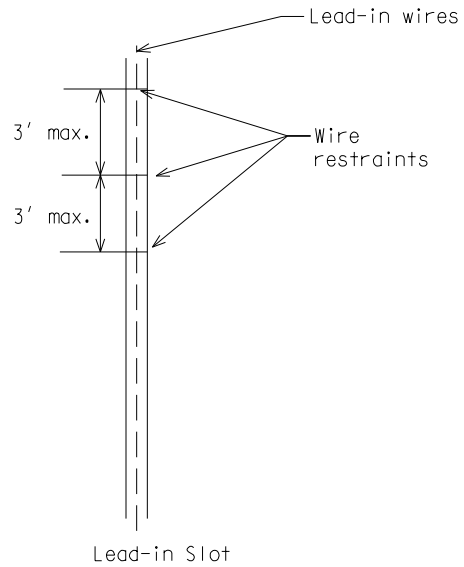
DETAIL "B"
EXPANSION JOINT CUTS



DETAIL "C"
TERMINATION OF LEAD-IN SLOTS



DETAIL "D"
WIRE RESTRAINTS



Lead-in Slot

NOT TO SCALE

MICHIGAN DEPARTMENT OF TRANSPORTATION
BUREAU OF HIGHWAYS DELIVERY STANDARD PLAN

(SPECIAL DETAIL)
FHWA APPROVAL DATE

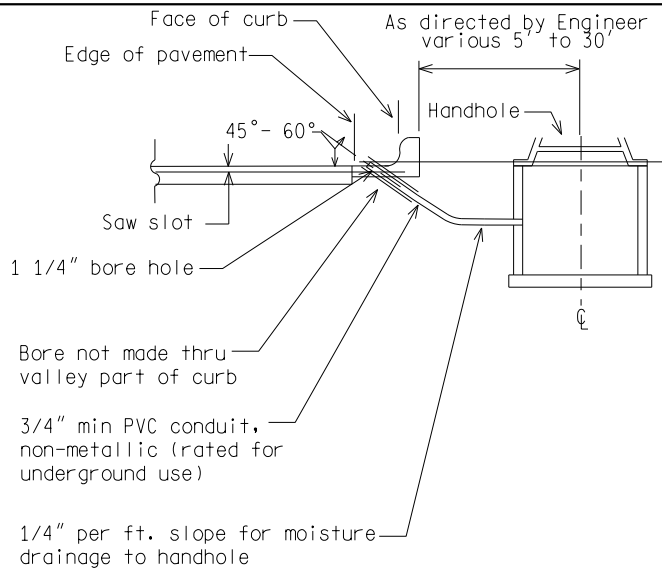
File:PW:RD/TR/Signals/WC SD/Final

Rev. 10/21/14

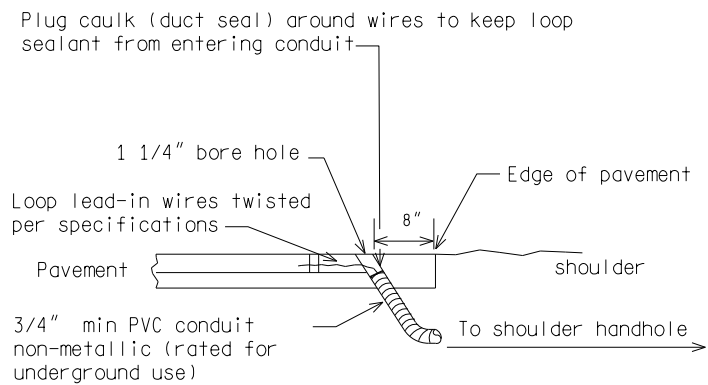
PLAN DATE

WC-170-A

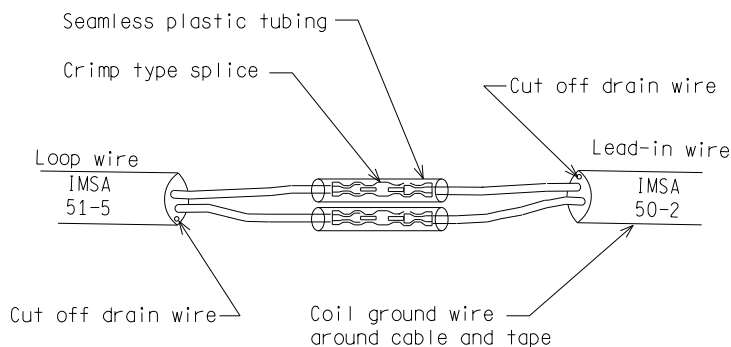
SHEET
2 of 4



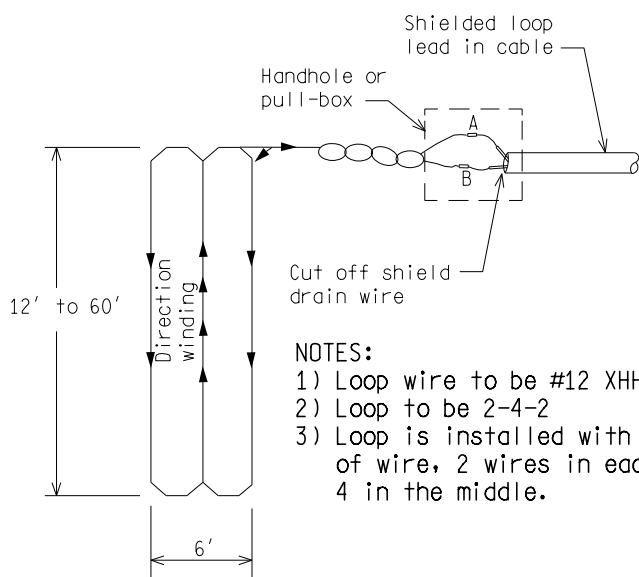
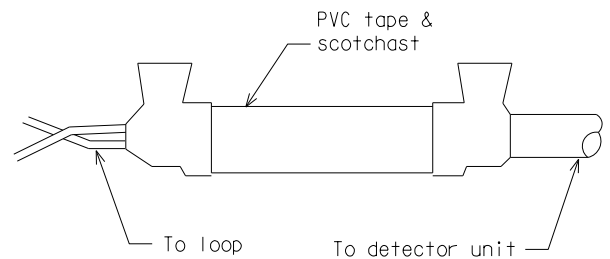
TYPE I
SECTION "C-C"
UNDER CURB INSTALLATION



TYPE II
BORE HOLE & LOOP WIRING
SECTION "D-D"
UNDER PAVEMENT INSTALLATION



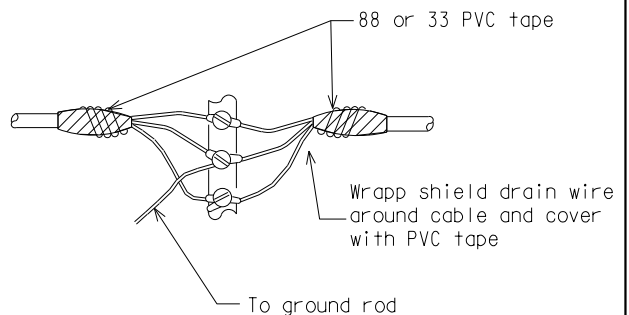
HANDHOLE & PULL-BOX SPLICES
(WATERPROOF)



NOTES:

- 1) Loop wire to be #12 XHHW
- 2) Loop to be 2-4-2
- 3) Loop is installed with a double layer of wire, 2 wires in each outside cut, 4 in the middle.

SERIES LOOP CONNECTION



CONTROLLER CABINET CONNECTION

NOT TO SCALE

MICHIGAN DEPARTMENT OF TRANSPORTATION
BUREAU OF HIGHWAYS DELIVERY STANDARD PLAN

(SPECIAL DETAIL)
FHWA APPROVAL DATE

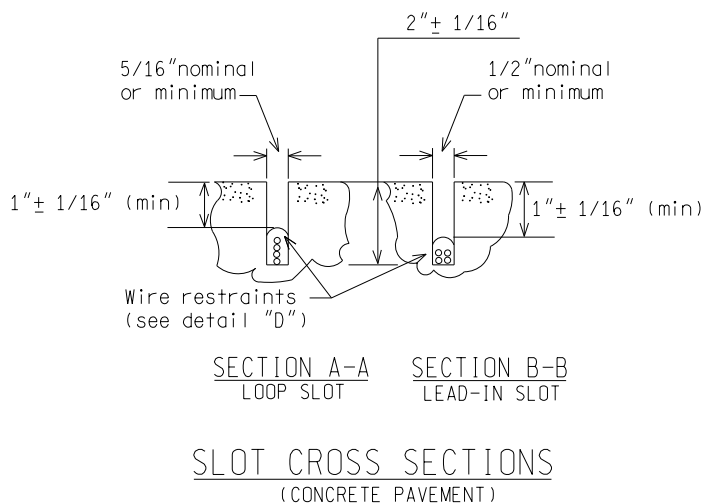
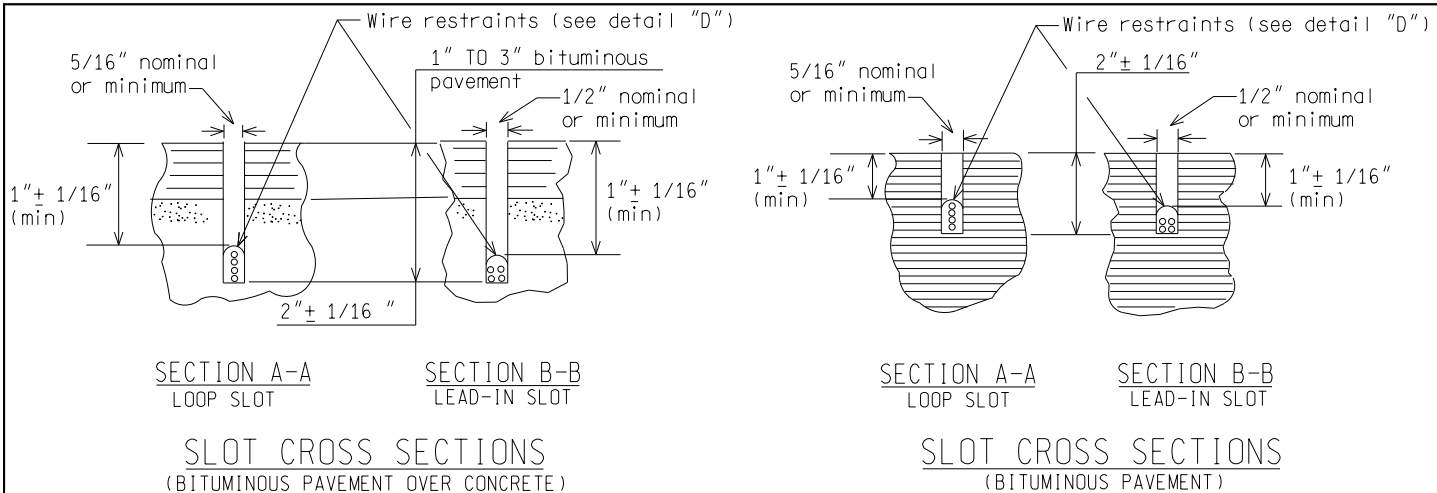
File: PW:RD/TR/Signals/WC SD/Final

Rev. 10/21/14

PLAN DATE

WC-170-A

SHEET
3 of 4



NOT TO SCALE

MICHIGAN DEPARTMENT OF TRANSPORTATION
BUREAU OF HIGHWAYS DELIVERY STANDARD PLAN

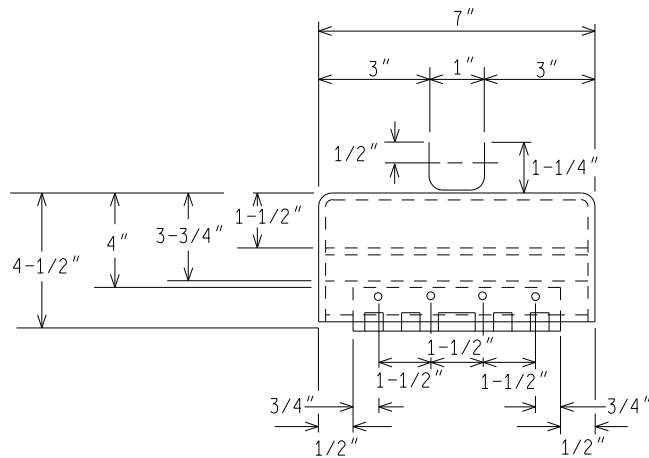
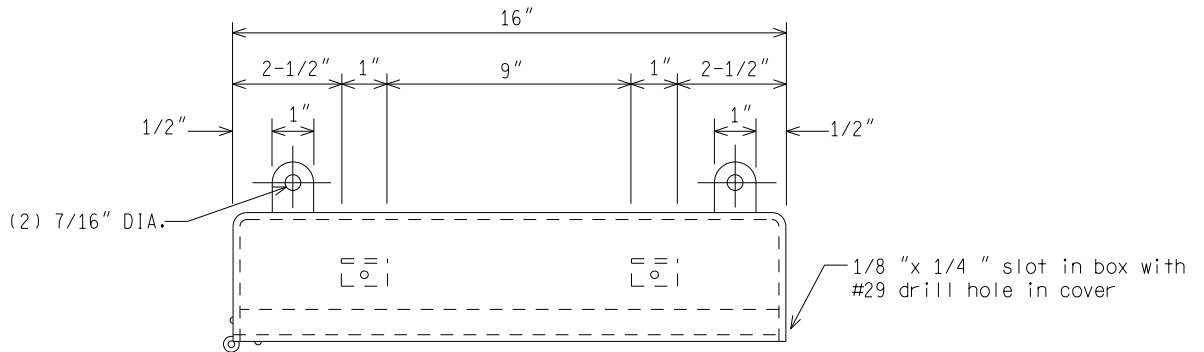
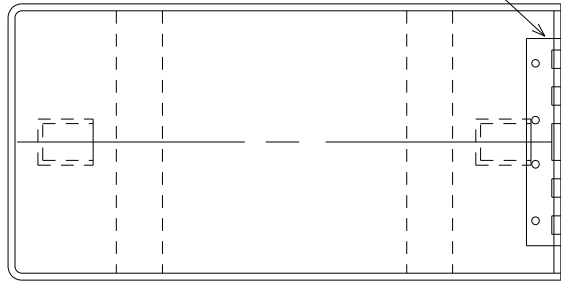
(SPECIAL DETAIL)
FHWA APPROVAL DATE

PLAN DATE

WC-170-A

SHEET
4 of 4

6" strap hinge w/8-1/8"
aluminum rivets



NOTES:

- 1) Box to be of weather tight construction.
- 2) Bushing for cable entrance to be liquid tight, sized per cable used.
- 3) Terminal Block to be cinch 17-142, 17 position or approved equal.
- 4) Mounting brackets to be same material as box.
- 5) All material to be 13 gauge sheet aluminum.

ALUMINUM SPAN WIRE JUNCTION BOX

NOT TO SCALE

File:PW:RD/TR/Signals/WC SD/Final

Rev. 12/16/14



PREPARED BY
TRAFFIC AND SAFETY

DRAWN BY:DJF

CHECKED BY:

ENGINEER OF DELIVERY

ENGINEER OF DEVELOPMENT

(SPECIAL DETAIL)

FHWA APPROVAL DATE

MICHIGAN DEPARTMENT OF TRANSPORTATION
BUREAU OF HIGHWAYS DELIVERY STANDARD PLAN FOR

SPAN WIRE
JUNCTION BOX

WC-408-A

PLAN DATE

SHEET
1 of 1