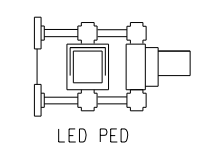
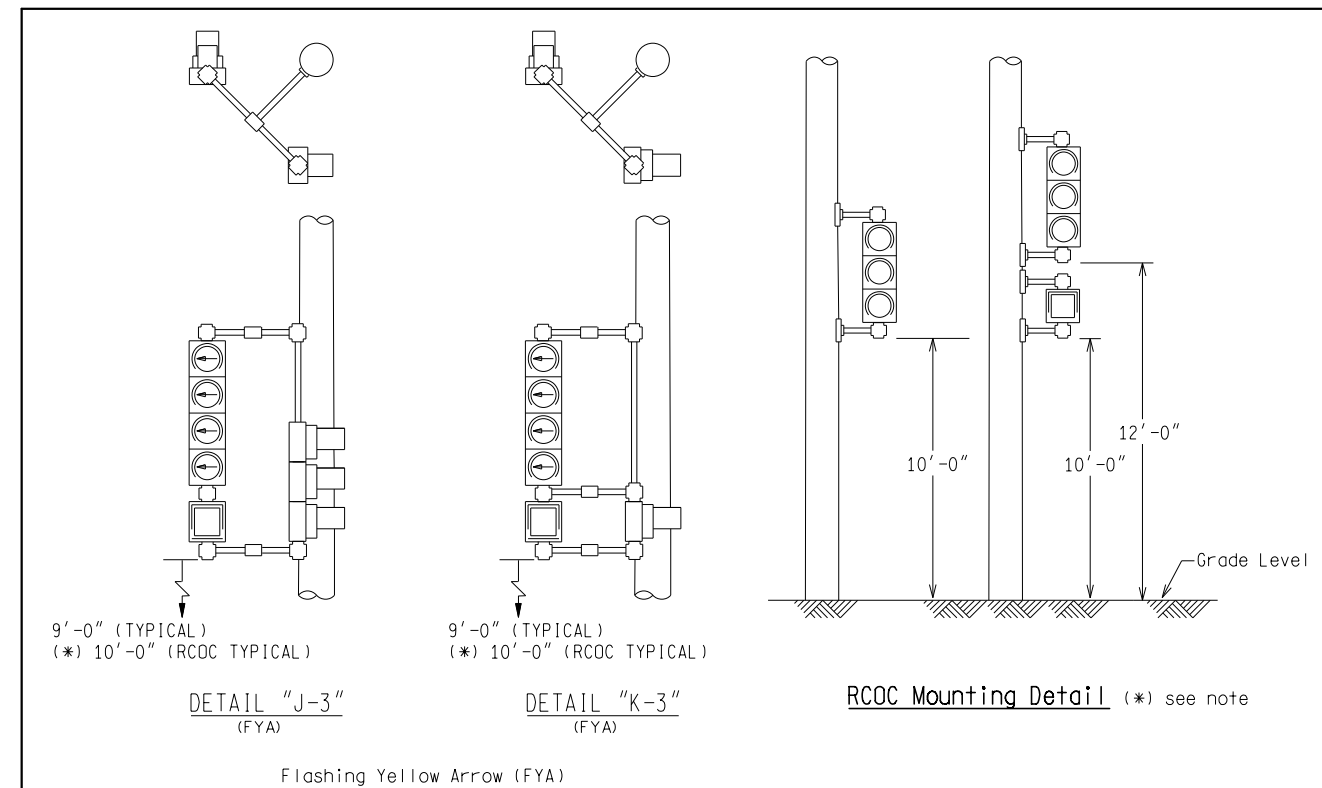


(* Refer to Note 5 on Sheet 2 of 2.)

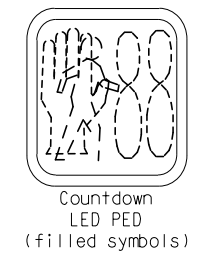
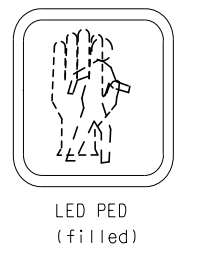
NOT TO SCALE

File: RefDoc/TR/Signals/Web/Sp Det/Fin/SIG342A.dgn Rev. 02/16/17

<p>MICHIGAN DEPARTMENT OF TRANSPORTATION BUREAU OF HIGHWAYS DELIVERY STANDARD PLAN FOR</p>	ENGINEER OF DELIVERY	<p>BACK BRACKET SIGNAL DISPLAYS</p>	<p>SHEET 1 of 2</p>
	ENGINEER OF DEVELOPMENT		
<p>PREPARED BY TRAFFIC AND SAFETY</p>	(SPECIAL DETAIL)	<p>SIG-342-A</p>	<p>PLAN DATE</p>
<p>DRAWN BY:</p> <p>CHECKED BY:</p>	FHWA APPROVAL DATE		



NOTES: Walking person and hand symbol are filled.



- NOTES:
- 1) The relative position of 2-Way T.S. & pedestrian bracket arm signals within the bracket assembly shall be reversed (i.e. the signal nearest the pole goes to the outside of the bracket assembly & the outside signal goes inboard or nearest to pole) according to the plan view to provide clear vehicular and pedestrian viewing.
 - 2) Pipe assembly shall be of such length and height as to accommodate traffic signals and pedestrian signals for proper maintenance and clear vehicular and pedestrian viewing.
 - 3) Pipe assembly shall be of such length and height as to accommodate an illuminated (12"x27") case sign for proper maintenance and clear vehicular viewing.
 - 4) Bracket lengths are 16 inches for LED pedestrian signals and LED pedestrian countdown signals.
 - 6) Tolerance within +/- 1/8" for bracketing.

(* For projects maintained by the Road Commission for Oakland County (RCOC), use the bottom heights and bracket assemblies as shown for the RCOC mounting detail.

NOT TO SCALE

MICHIGAN DEPARTMENT OF TRANSPORTATION BUREAU OF HIGHWAYS DELIVERY STANDARD PLAN	(SPECIAL DETAIL) FHWA APPROVAL DATE	PLAN DATE	SIG-342-A	SHEET 2 of 2
File: RefDoc/TR/Signals/Web/Sp Det/Fin/SIG342A.dgn	Rev. 02/16/17			

AS-LET PLAN REVISIONS							
NO.	DATE	AUTH	DESCRIPTION	NO.	DATE	AUTH	DESCRIPTION



DATE:	CS:	DRAWING	SHEET
DESIGN UNIT:	JN:		
TSC:			
FILE:			