

KEY

- CHANNELIZING DEVICES
- ⊘ LIGHTED ARROW PANEL
- ← TRAFFIC FLOW

NOTES

1. THIS TYPICAL MAY ALSO BE USED WHEN WORK IS BEING PERFORMED IN THE LANE ADJACENT TO THE MEDIAN. IN THIS CASE, THE "LEFT LANE CLOSED AHEAD" SIGNS AND THE CORRECT CORRESPONDING LANE ENDS SIGN SHALL BE SUBSTITUTED.

STANDARD NOTES

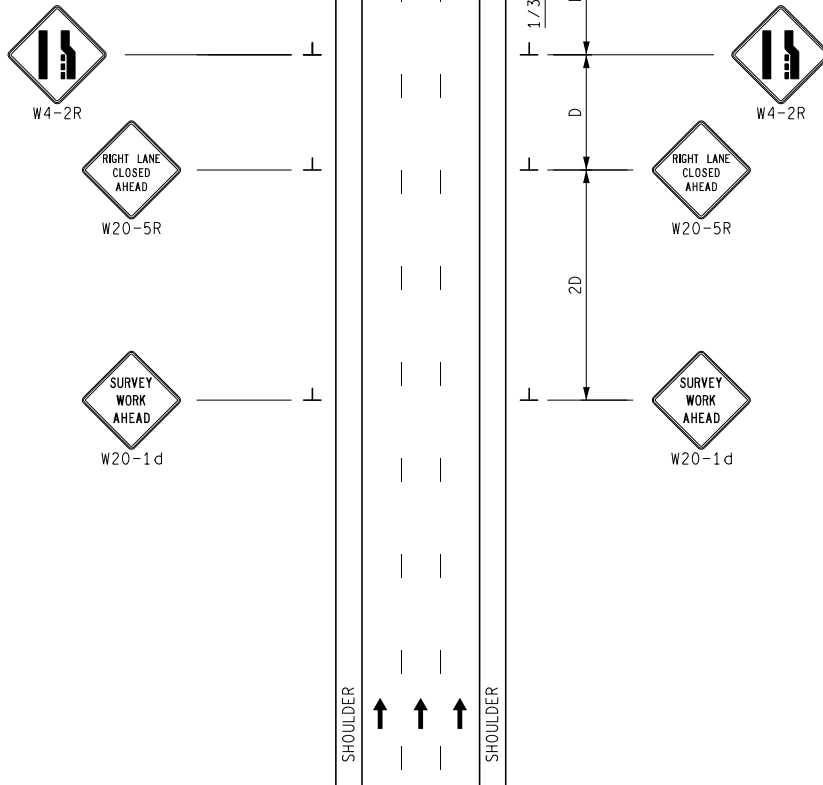
(SEE 102-GEN-NOTES)

GENERAL: G1, G2, G3, G4

SIGNING: S1

DEVICES: TCD1, TCD2, TCD6

MAINT & SURV: MS2, MS3, MS4, MS6



NOT TO SCALE

	SURVEYING MAINTAINING TRAFFIC TYPICAL	DURATION: SHORT-TERM STATIONARY	SINGLE LANE CLOSURE ON A FREEWAY	DATE: MAY 2021
				NO: 5203-S-FW-1LC
				SHEET: 1 OF 1

FILE: 5203-S-FW-1LC.dgn