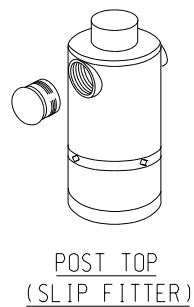
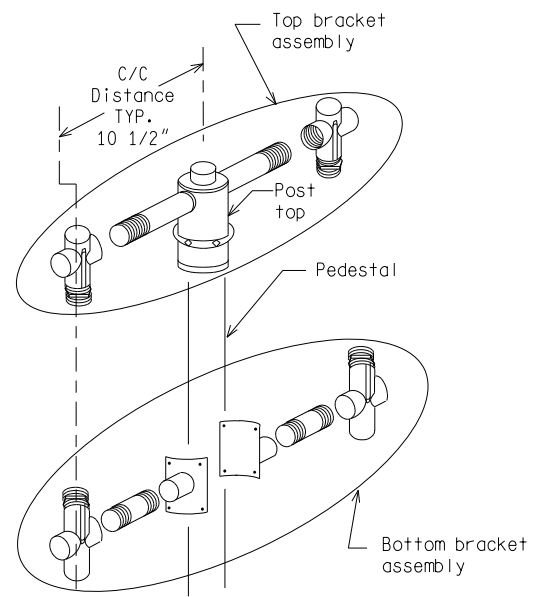
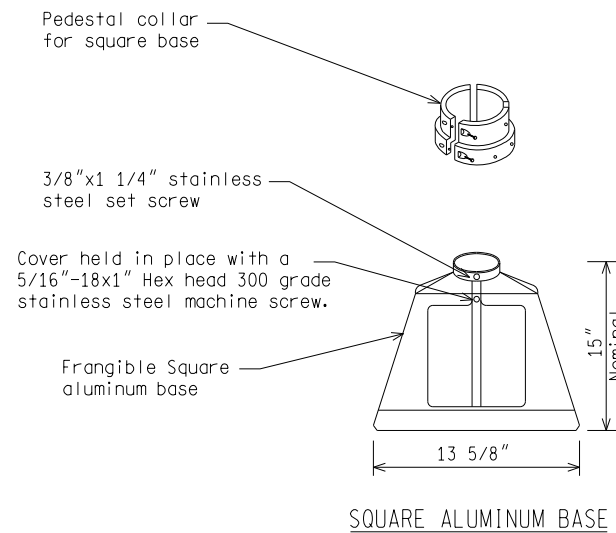


NOTE:
1) Use pedestal collar for pedestal length of $\geq 14'$ (typical for 3-color traffic signal in combination with pedestrian signal)

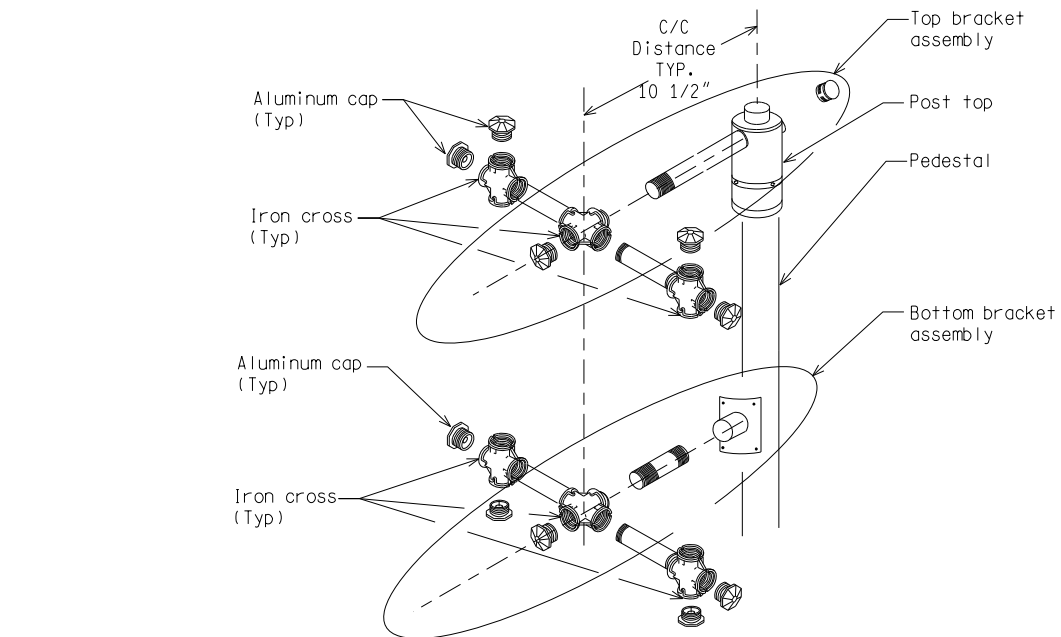


TRAFFIC/PEDESTRIAN SIGNAL MOUNTING HARDWARE

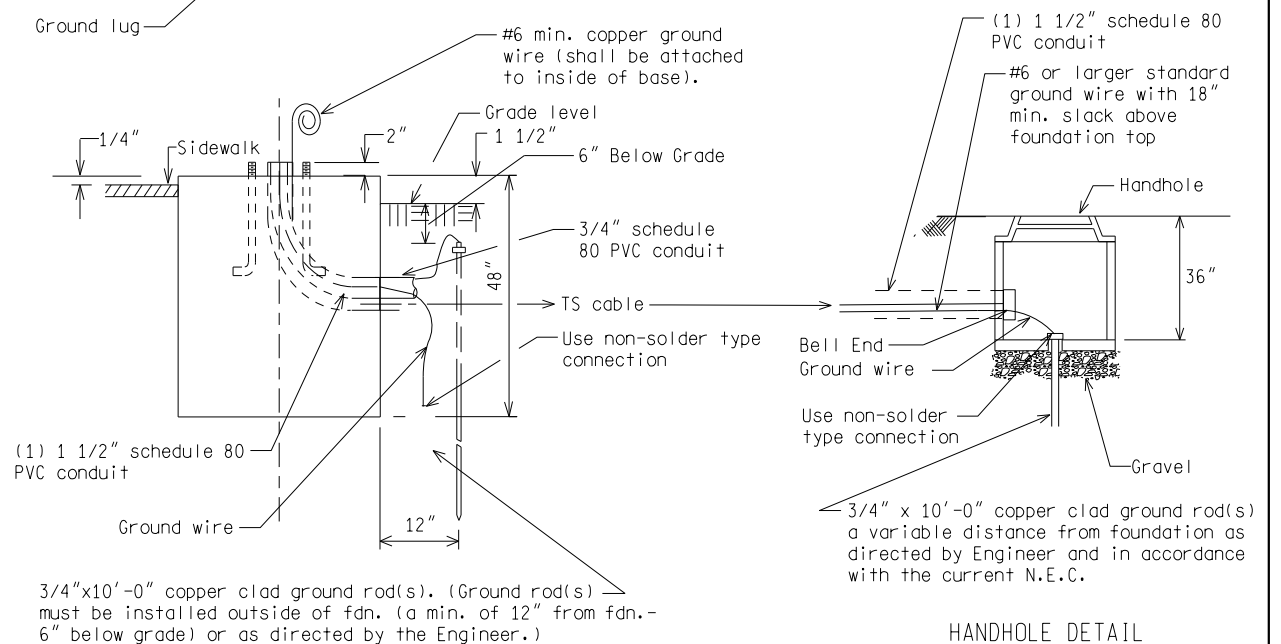
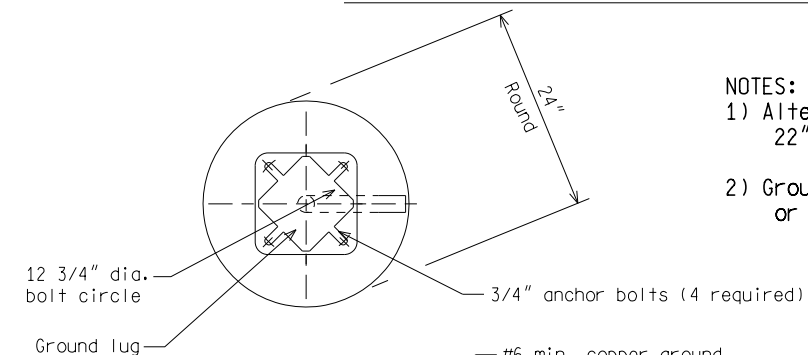
NOT TO SCALE

File: PW:RD/TR/Signals/Web/WC SD/Final Rev. 10/21/14

<p>MICHIGAN DEPARTMENT OF TRANSPORTATION</p>	ENGINEER OF DELIVERY	<p>MICHIGAN DEPARTMENT OF TRANSPORTATION BUREAU OF HIGHWAYS DELIVERY STANDARD PLAN FOR</p> <p>PEDESTAL FOUNDATION AND SIGNAL MOUNTING DETAILS</p>	<p>WC-028-B</p>	<p>SHEET 1 of 3</p>
	ENGINEER OF DEVELOPMENT (SPECIAL DETAIL) <p>FHWA APPROVAL DATE</p>			
<p>DRAWN BY:</p> <p>CHECKED BY:</p>				



NOTES:
1) Alternate foundation may be constructed 22"x22" square - 48" deep.
2) Grounding system shall measure 10 ohm or less to ground.



PEDESTAL FOUNDATION

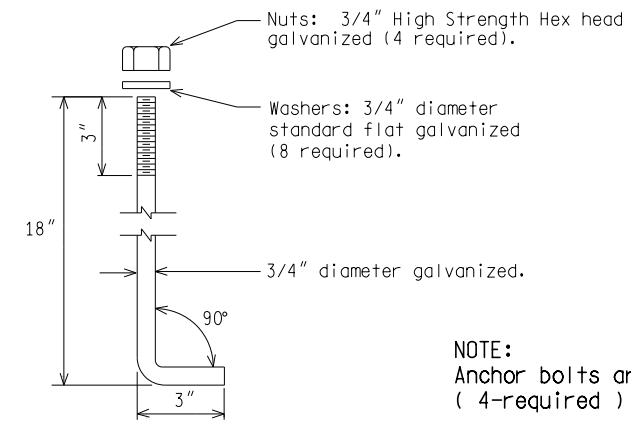
NOT TO SCALE

MICHIGAN DEPARTMENT OF TRANSPORTATION	(SPECIAL DETAIL)			
BUREAU OF HIGHWAYS DELIVERY STANDARD PLAN	FHWA APPROVAL DATE			
File: PW:RD/TR/Signals/Web/WC SD/Final	Rev. 10/21/14	PLAN DATE	WC-028-B	SHEET 2 of 3

AS-LET PLAN REVISIONS							
NO.	DATE	AUTH	DESCRIPTION	NO.	DATE	AUTH	DESCRIPTION



DATE:	CS:	DRAWING	SHEET
DESIGN UNIT:	JN:		
FILE:	TSC:		



NOTE:
Anchor bolts are to be ASTM A-307 steel
(4-required)

ANCHOR BOLT DETAIL

NOT TO SCALE

MICHIGAN DEPARTMENT OF TRANSPORTATION BUREAU OF HIGHWAYS DELIVERY STANDARD PLAN	(SPECIAL DETAIL) FHWA APPROVAL DATE		WC-028-B	SHEET 3 of 3
File: PW:RD/TR/Signals/Web/WC SD/Final	Rev. 10/21/14	PLAN DATE		

AS-LET PLAN REVISIONS

NO.	DATE	AUTH	DESCRIPTION	NO.	DATE	AUTH	DESCRIPTION



FILE:

DATE:

DESIGN UNIT:

TSC:

CS:

JN:

DRAWING SHEET