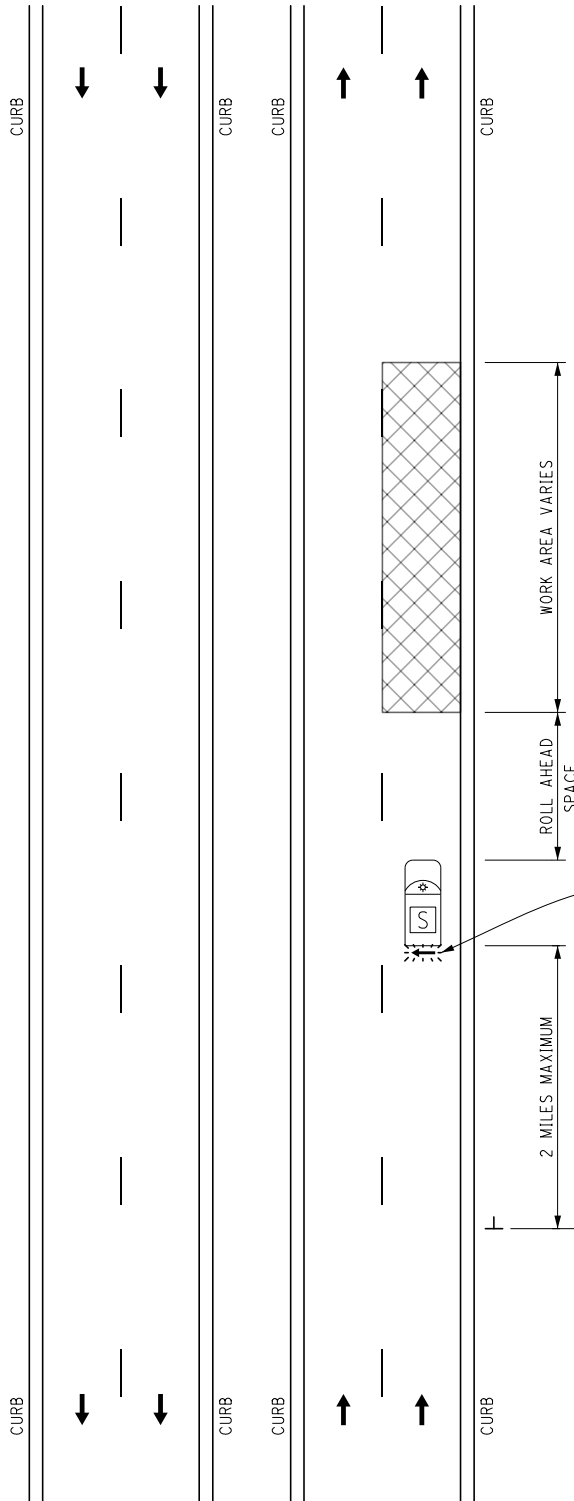


KEY

 LIGHTED ARROW PANEL

 TRAFFIC FLOW

 SHADOW VEHICLE WITH OPTIONAL TRUCK MOUNTED ATTENUATOR



NOTES

"ROAD WORK AHEAD" SIGN SHALL BE WITHIN TWO MILES OF WORK AREA.

THIS DETAIL IS ONLY ALLOWED IN AREAS WITHOUT SHOULDERS AND SPEED LIMITS OF 45 MPH OR LESS. USED FOR PATROLLING, MINOR PATCHING AND OTHER ACTIVITIES IN AREAS WITH CURBED ROADWAY.

STANDARD NOTES

(SEE 102-GEN-NOTES)

GENERAL: G1, G2, G3, G4

SIGNING: S1

MAINT & SURV: MS1, MS2, MS3, MS4, MS5

LIGHTED ARROW PANEL (ARROW MODE)



NOT TO SCALE

	MAINTENANCE MAINTAINING TRAFFIC TYPICAL	DURATION: SHORT-DURATION MOBILE	LANE CLOSURE ON A DIVIDED ROADWAY WITH CURBS AND SPEED LIMITS 45 MPH OR LESS	DATE: MAY 2021
				NO: 4402-M-NFW-1LC
FILE: 4402-M-NFW-1LC.dgn				SHEET: 1 OF 1