

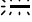


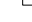




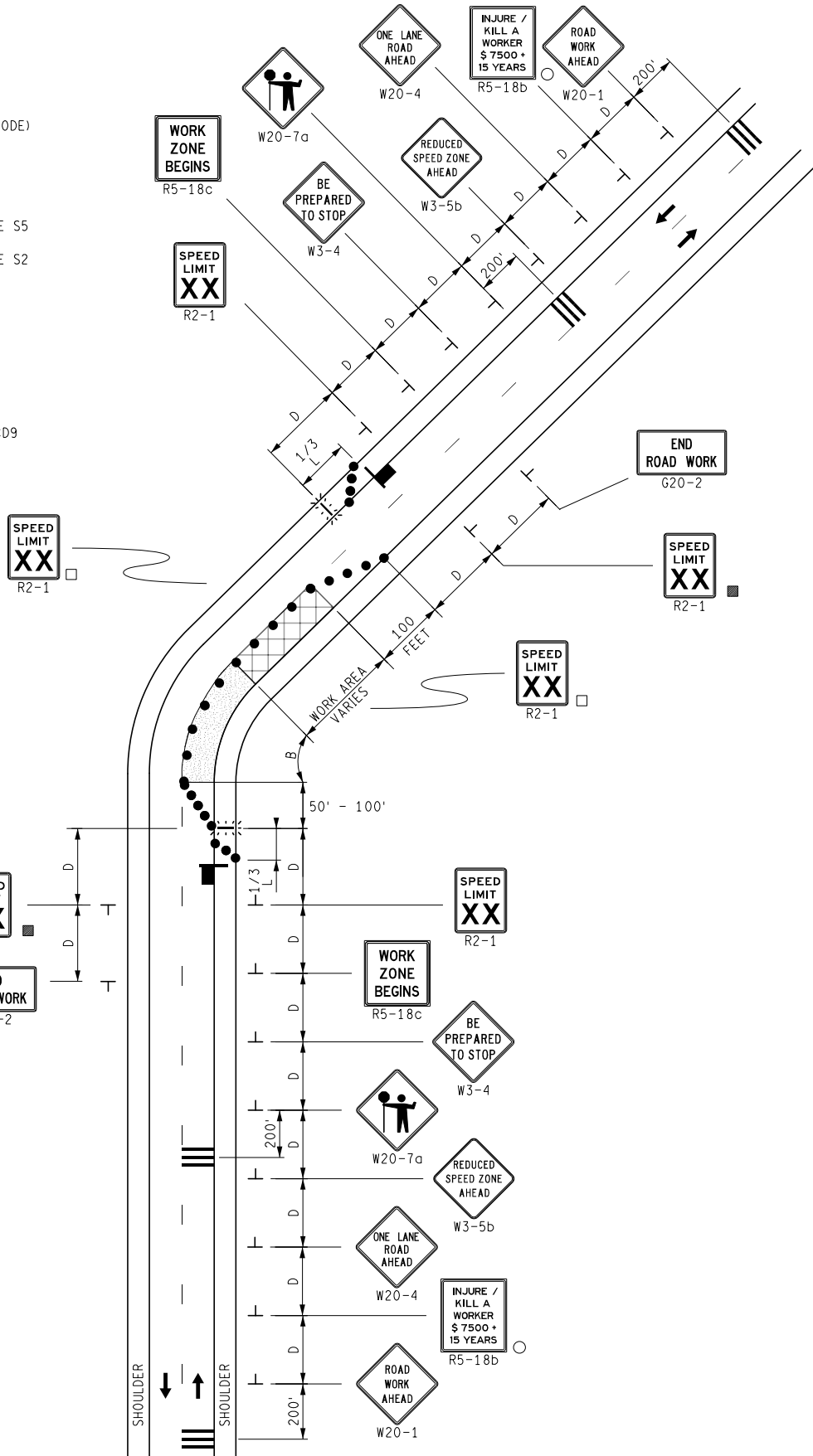
KEY

-  TRAFFIC REGULATOR
-  CHANNELIZING DEVICES
-  LIGHTED ARROW PANEL (CAUTION MODE)
-  TRAFFIC FLOW
-  REFLECTS EXISTING SPEED LIMIT
-  PLACE SIGN AS INDICATED IN NOTE S5
-  PLACE SIGN AS INDICATED IN NOTE S2
-  RUMBLE STRIPS (SEE NOTE TCD9)

STANDARD NOTES

(SEE 102-GEN-NOTES)

GENERAL: G1, G2, G3, G4
 SIGNING: S1, S2, S3, S4, S5
 TRAF REG: TR1, TR2
 DEVICES: TCD1, TCD2, TCD6, TCD9



NOT TO SCALE

MAINTAINING TRAFFIC TYPICAL

NO: 111-
 TR-NFW-2L-RUM

LANE CLOSURE
 UTILIZING TRAFFIC REGULATORS
 ON A 2-LANE UNDIVIDED ROADWAY
 RUMBLE STRIPS

DATE: MAY 2021
 SHEET:

1 OF 1