

### KEY

- CHANNELIZING DEVICES
- ⚡ LIGHTED ARROW PANEL
- ← TRAFFIC FLOW

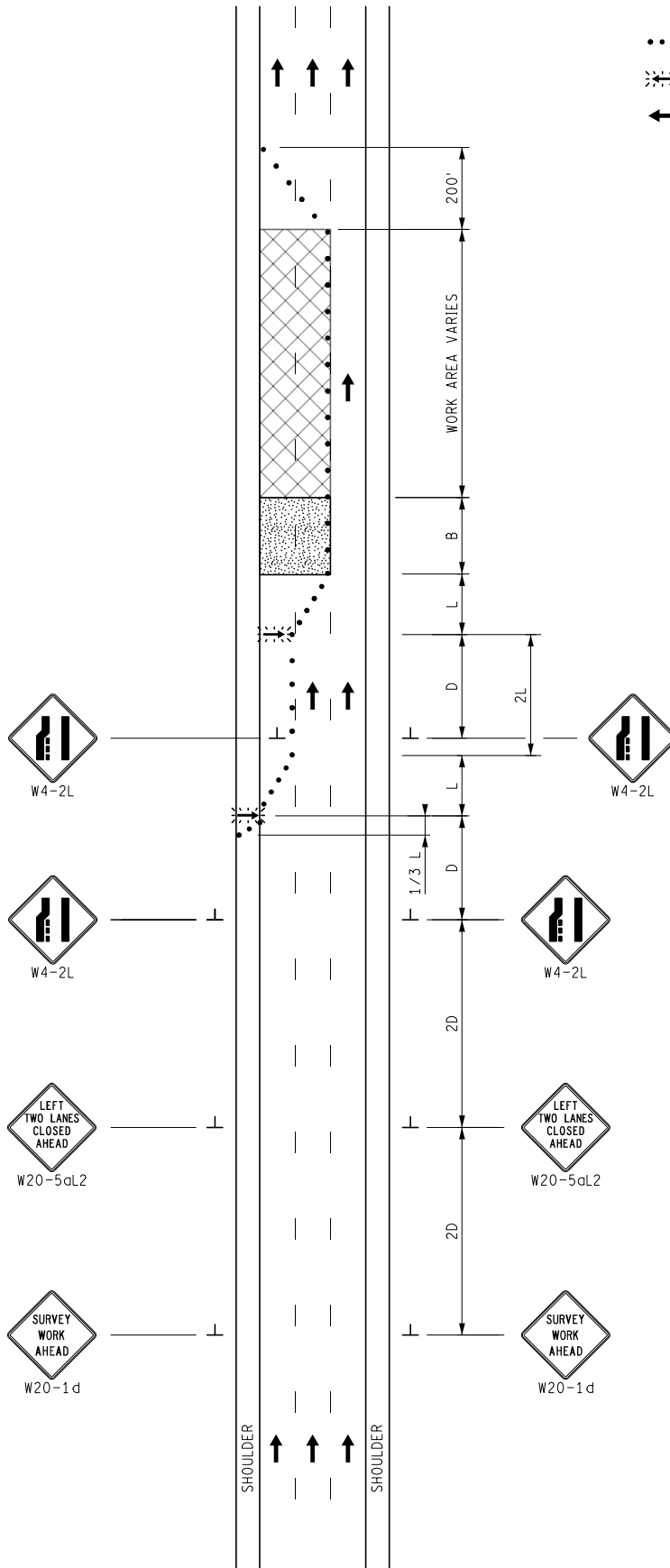
### NOTES

1. THIS TYPICAL MAY ALSO BE USED WHEN WORK IS BEING PERFORMED IN THE LANE ADJACENT TO THE OUTSIDE OF THE FREEWAY. IN THAT CASE, W20-5aL2 AND W4-2L MUST BE SUBSTITUTED WITH W20-5aR2 AND W4-2R.
2. A LIGHTED ARROW PANEL IN ARROW MODE IS REQUIRED FOR EACH LANE CLOSURE.

### STANDARD NOTES

(SEE 102-GEN-NOTES)

- GENERAL: G1, G2, G3, G4
- SIGNING: S1
- DEVICES: TCD1, TCD2, TCD6
- MAINT & SURV: MS2, MS3, MS4, MS6



NOT TO SCALE

	SURVEYING MAINTAINING TRAFFIC TYPICAL	DURATION: SHORT-TERM STATIONARY	TWO-LANE CLOSURE ON A FREEWAY	DATE: MAY 2021
				NO: 5205-S-FW-2LC-(L)
FILE: 5205-S-FW-2LC-(L).dgn				SHEET: 1 OF 1