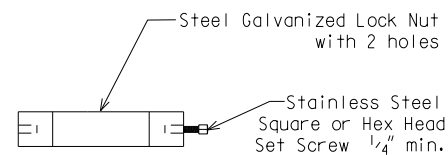
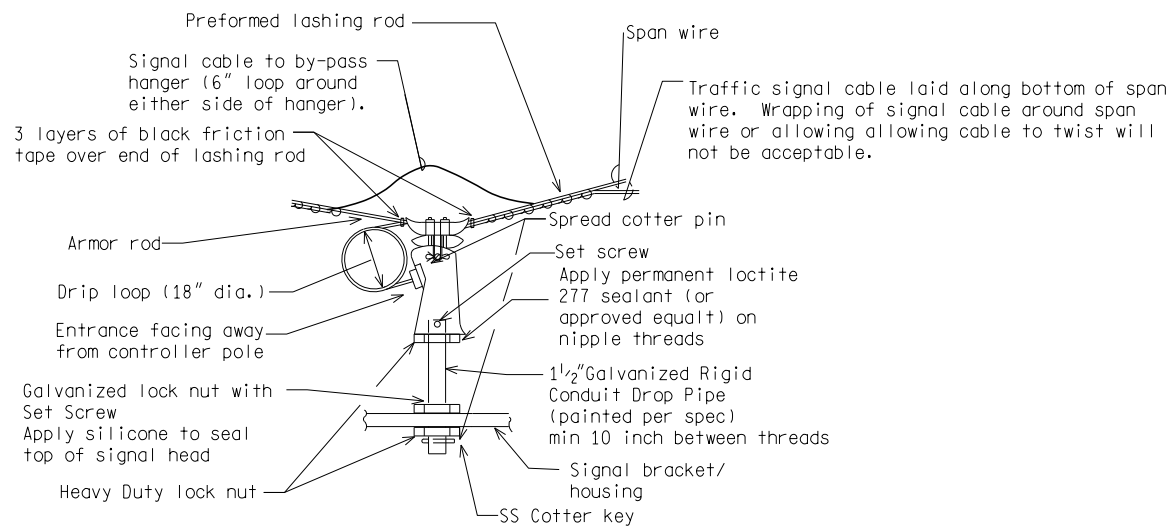


ONE-WAY TRAFFIC SIGNAL HEAD



OH SIGNAL LOCK NUT DETAIL



HANGER ATTACHMENT

NOT TO SCALE

File: RefDoc/TR/Signals/Web/Sp Det/Fin/SIG300A.dgn Rev. 11/13/20



ENGINEER OF DELIVERY

ENGINEER OF DEVELOPMENT

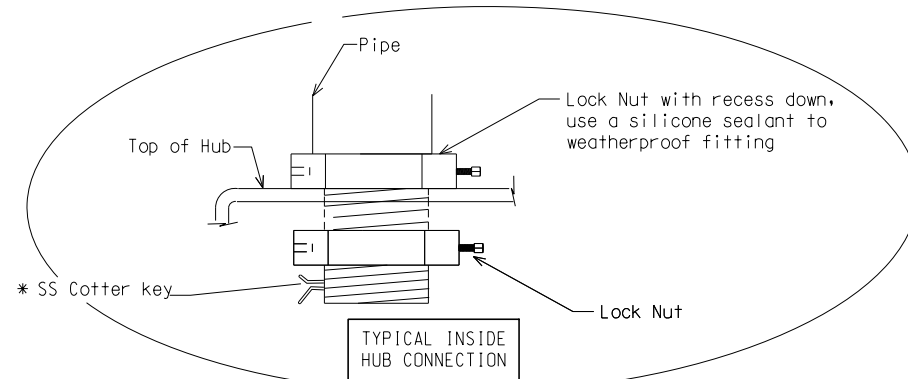
(SPECIAL DETAIL)
FHWA APPROVAL DATE

MICHIGAN DEPARTMENT OF TRANSPORTATION
BUREAU OF HIGHWAYS DELIVERY STANDARD PLAN FOR

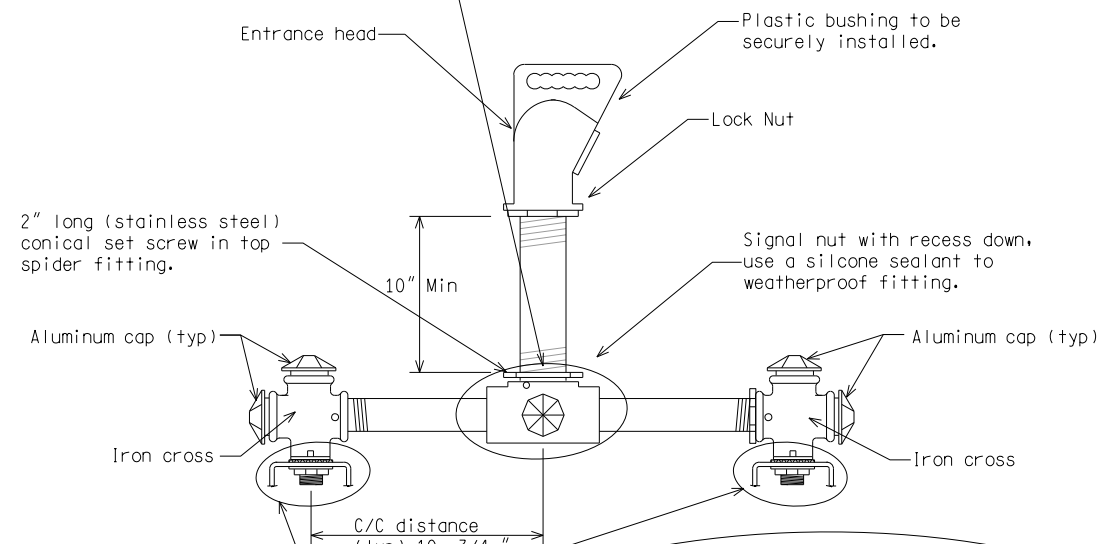
**SPAN WIRE MOUNTED
T.S. BRACKET ASSEMBLY**

SIG-300-A

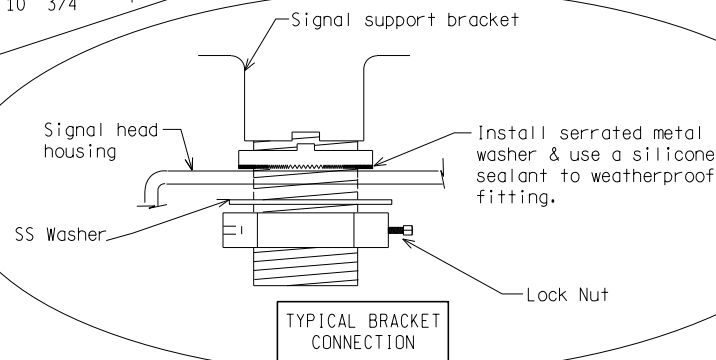
SHEET
1 of 3



TYPICAL INSIDE HUB CONNECTION



NOTE:
2-way T.S. shown
3-way T.S. & 4-way similar



TYPICAL BRACKET CONNECTION

MULTIPLE-WAY TRAFFIC SIGNAL HEAD(S)

NOTE:
1) Exterior surface of all mounting assembly located below span clamps, including stems, lock nuts, and related hardware must match the current FHWA Highway yellow color tolerance chart per the Standard Specifications for Construction.

2) Tolerance within $\pm 1/8"$ for all bracketing.

NOT TO SCALE

MICHIGAN DEPARTMENT OF TRANSPORTATION
BUREAU OF HIGHWAYS DELIVERY STANDARD PLAN (SPECIAL DETAIL)
FHWA APPROVAL DATE

File: RefDoc/TR/Signals/Web/Sp Det/Fin/SIG300A.dgn Rev. 11/13/20

PLAN DATE

SIG-300-A

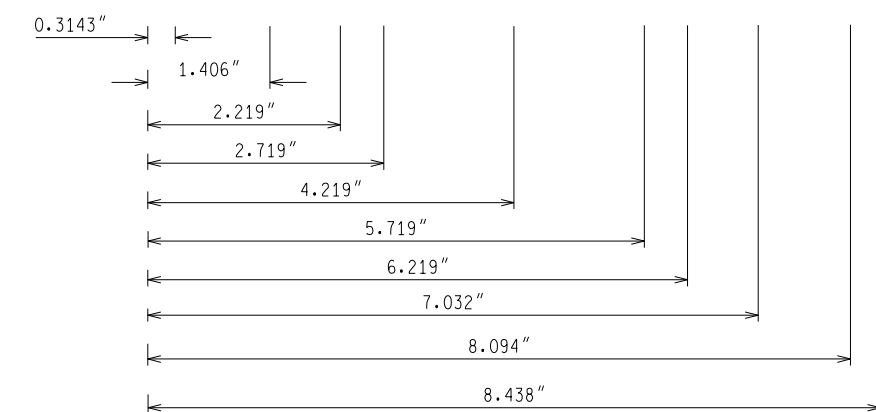
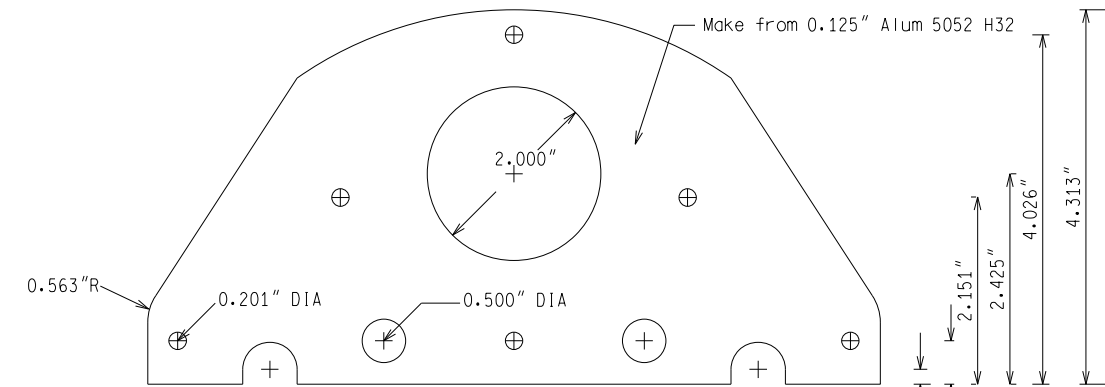
SHEET
2 of 3

FINAL ROW PLAN REVISIONS (SUBMITTAL DATE:)			
NO.	DATE	AUTH	DESCRIPTION

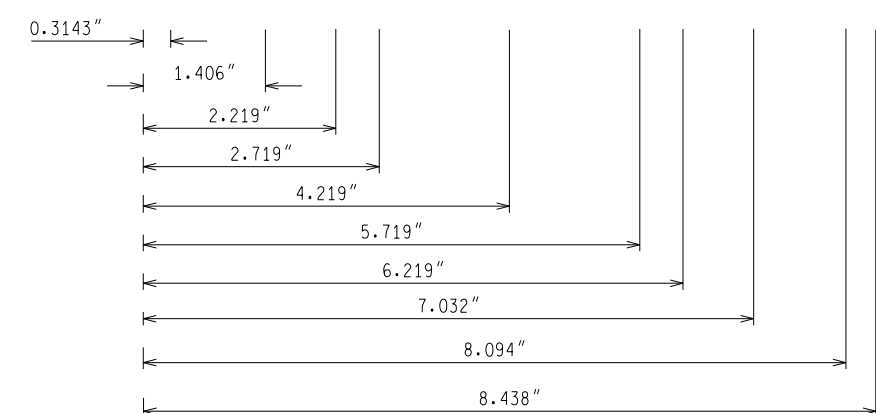
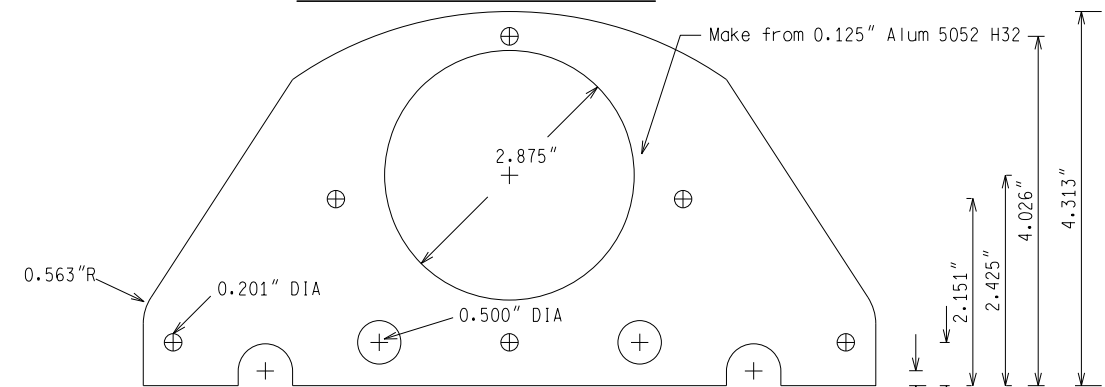


NO SCALE

DATE:	CS:	DRAWING	SHEET
DESIGN UNIT:	JN:		
TSC:			
FILE:			



INSIDE SIGNAL HOUSING



OUTSIDE SIGNAL HOUSING

Note:
Plates to be included
in the top and bottom
of the signal housing.

NOT TO SCALE

MICHIGAN DEPARTMENT OF TRANSPORTATION BUREAU OF HIGHWAYS DELIVERY STANDARD PLAN	(SPECIAL DETAIL) FHWA APPROVAL DATE	PLAN DATE	SIG-300-A	SHEET 3 of 3
File: RefDoc/TR/Signals/Web/Sp Det/Fin/SIG300A.dgn Rev. 11/13/20				

FINAL ROW PLAN REVISIONS				(SUBMITTAL DATE:)			
NO.	DATE	AUTH	DESCRIPTION	NO.	DATE	AUTH	DESCRIPTION



NO SCALE

FILE:

DATE:
DESIGN UNIT:
TSC:

CS:
JN:

DRAWING SHEET
SECT