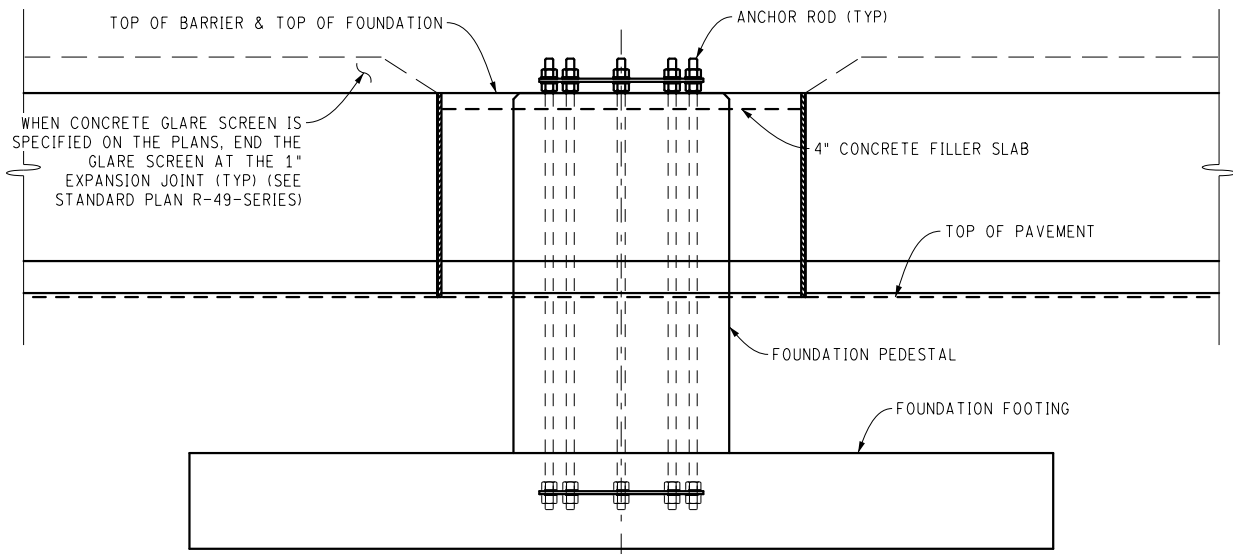


PLAN VIEW



ELEVATION VIEW

NOTES:

WHEN THE FOUNDATION IS LOCATED WITHIN THE MEDIAN BARRIER, USE STANDARD PLAN R-49-SERIES FOR ADDITIONAL BARRIER DETAILS NOT SHOWN.

LOCATE THE TOP OF FOUNDATION PEDESTAL AT THE TOP OF BARRIER.



PREPARED BY  
ANCILLARY  
STRUCTURES

DRAWN BY: HNTB

CHECKED BY: MLO

DEPARTMENT DIRECTOR  
Bradley C. Wiefelich, P.E.

APPROVED BY: \_\_\_\_\_  
DIRECTOR, BUREAU OF FIELD SERVICES

APPROVED BY: \_\_\_\_\_  
DIRECTOR, BUREAU OF DEVELOPMENT

MICHIGAN DEPARTMENT OF TRANSPORTATION

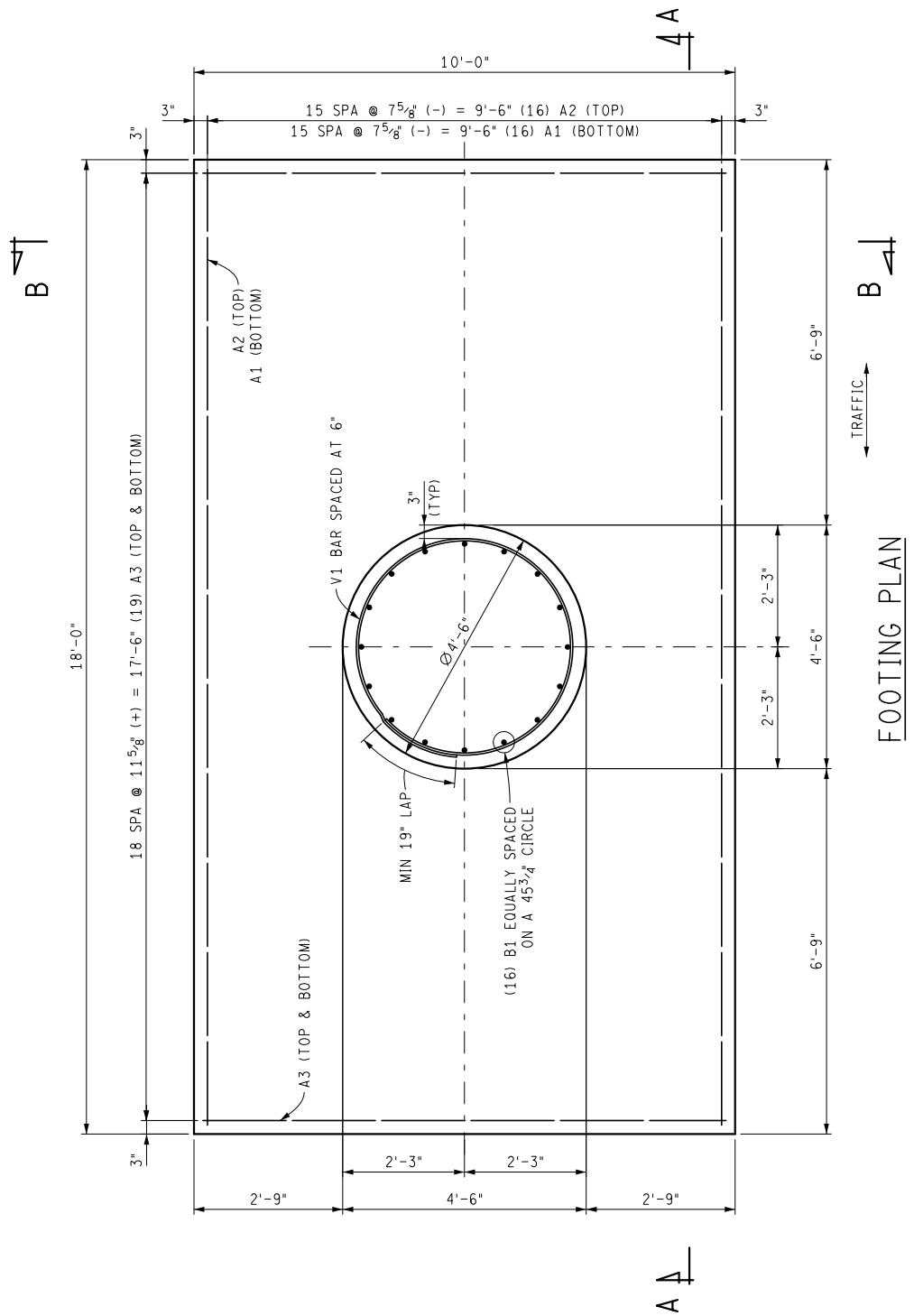
SPREAD FOOTING FOUNDATION  
FOR CANTILEVER TYPE J

10/11/23  
F.H.W.A. APPROVAL

08/08/23  
PLAN DATE

SIGN-375-B

SHEET  
1 OF 6



NOT TO SCALE

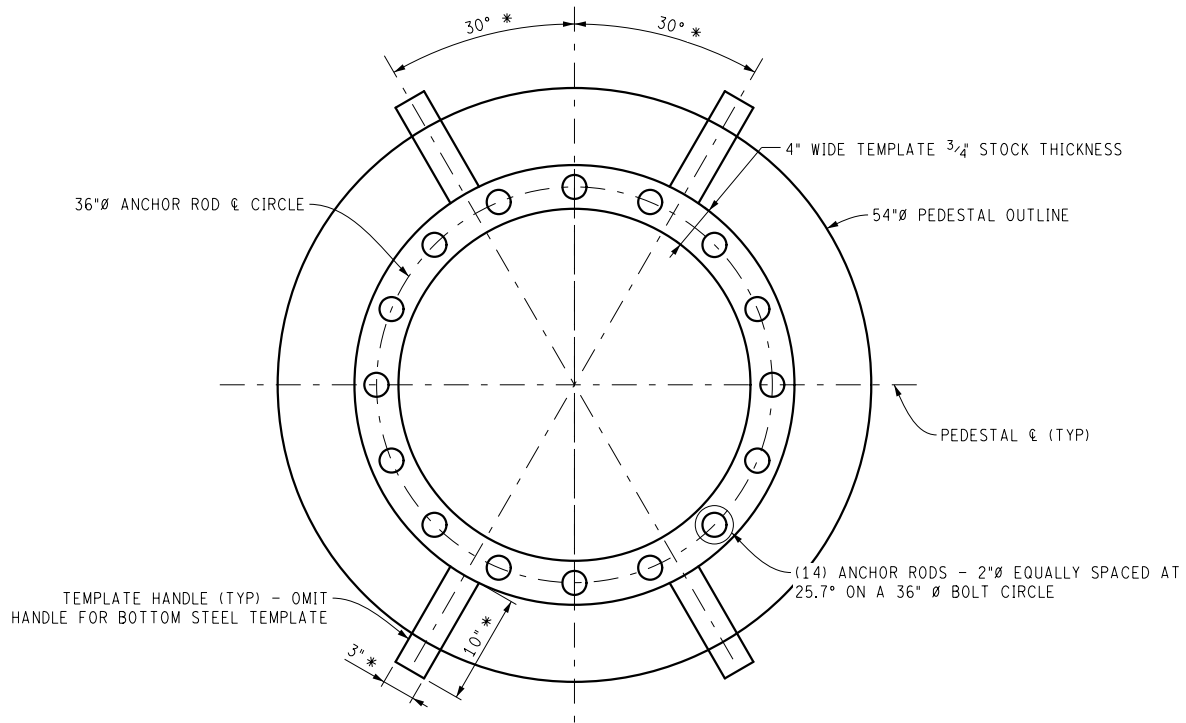
MICHIGAN DEPARTMENT OF TRANSPORTATION

10/11/23  
F.H.W.A. APPROVAL

08/08/23  
PLAN DATE

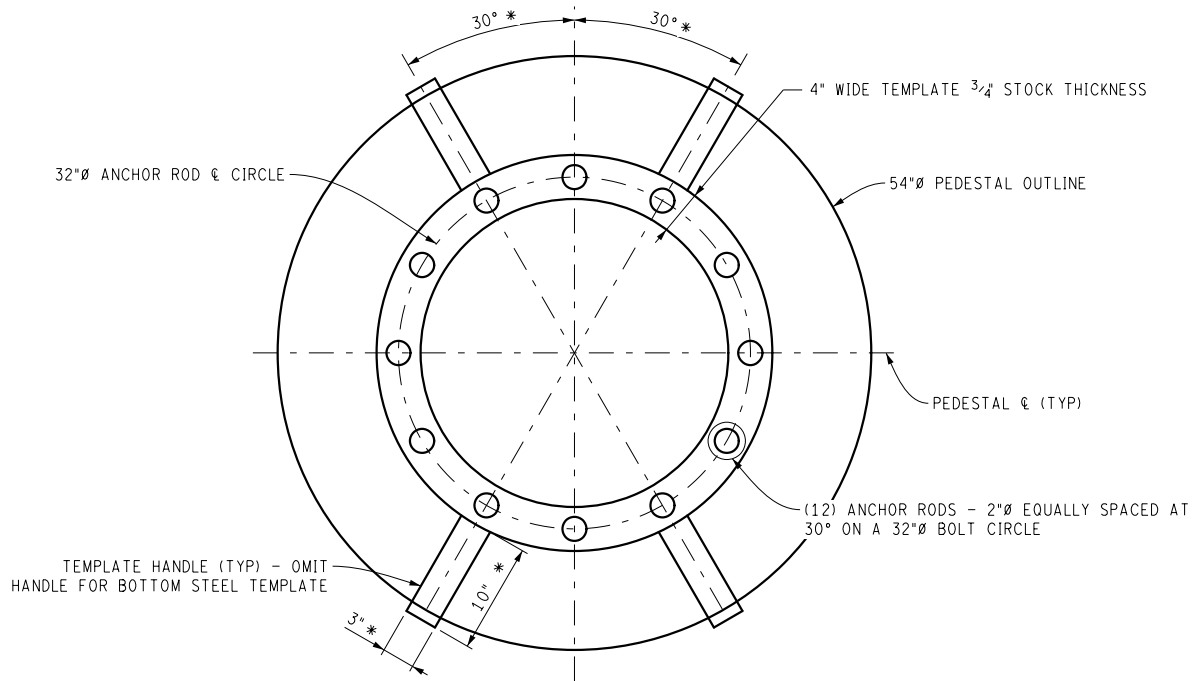
SIGN-375-B

SHEET  
2 OF 6



**PLAN VIEW 1**

(FOR USE WITH 35 FT AND 40 FT CANTILEVER ARMS)  
 \* OR AS REQUIRED BY THE ENGINEER.  
 NOTE: OMIT TEMPLATE HANDLES ON BOTTOM STEEL TEMPLATES.

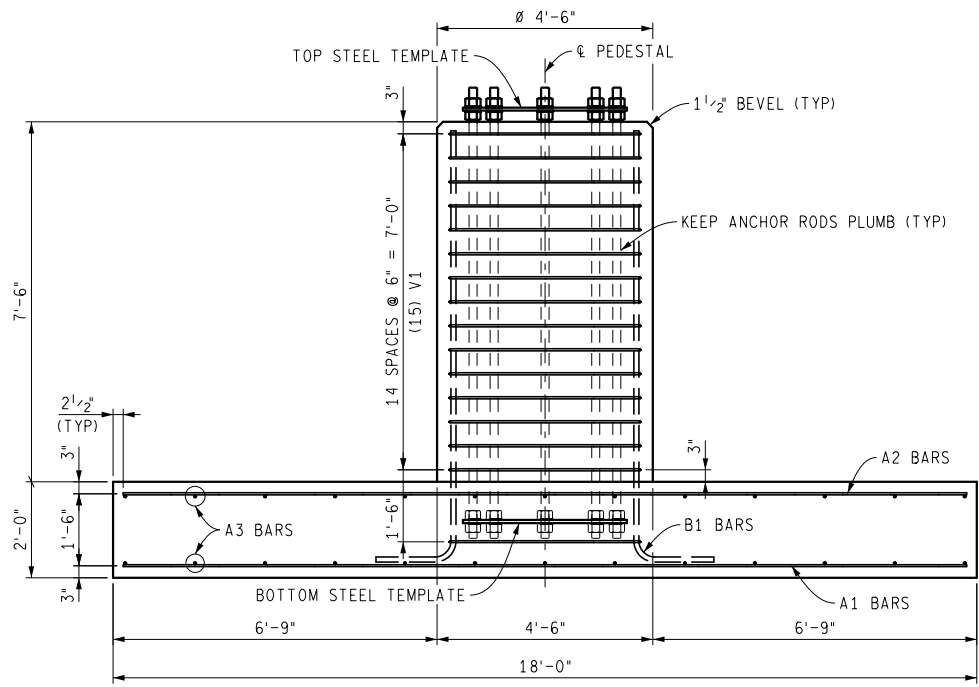


**PLAN VIEW 2**

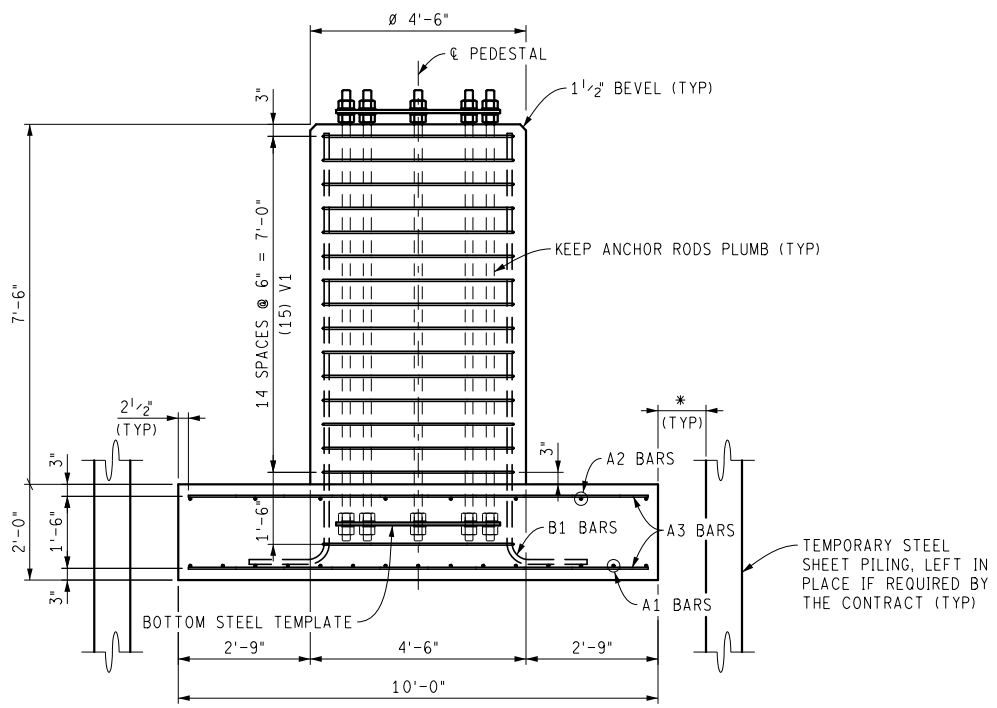
(FOR USE WITH 20 FT THROUGH 30 FT CANTILEVER ARMS OR  
 WITH 35 FT AND 40 FT CANTILEVER ARMS WITH  
 REDUCED SIGN AREA SHOWN IN SIGN-350-SERIES.)  
 \* OR AS REQUIRED BY THE ENGINEER.  
 NOTE: OMIT TEMPLATE HANDLES ON BOTTOM STEEL TEMPLATES.

NOT TO SCALE

MICHIGAN DEPARTMENT OF TRANSPORTATION	10/11/23 F.H.W.A. APPROVAL	08/08/23 PLAN DATE	SIGN-375-B	SHEET 3 OF 6
---------------------------------------	-------------------------------	-----------------------	------------	-----------------



SECTION A-A

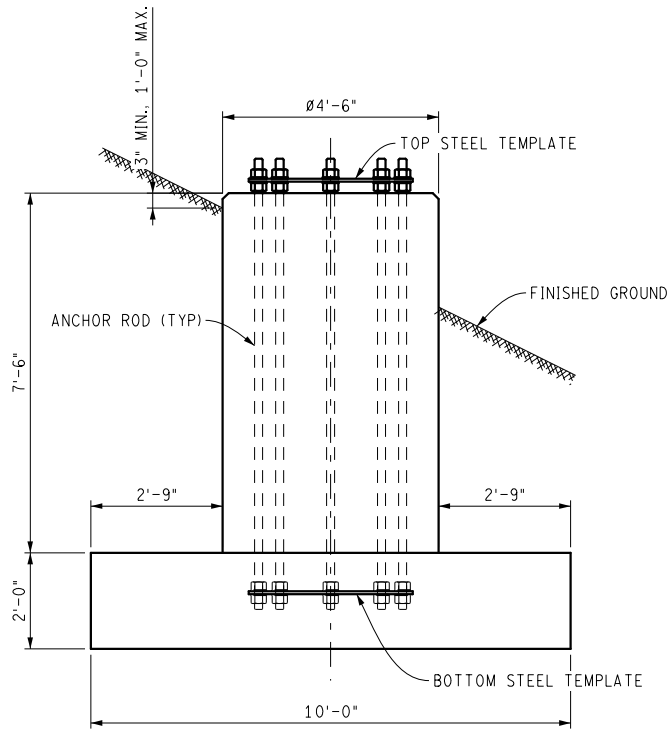


SECTION B-B

\* 0" MIN, 18" MAX, OR AS APPROVED BY THE ENGINEER

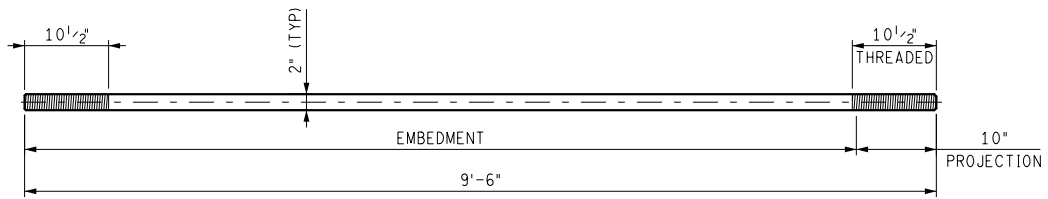
NOT TO SCALE

MICHIGAN DEPARTMENT OF TRANSPORTATION	10/11/23 F.H.W.A. APPROVAL	08/08/23 PLAN DATE	SIGN-375-B	SHEET 4 OF 6
---------------------------------------	-------------------------------	-----------------------	------------	-----------------



**CROSS SECTION AT SHOULDER**

NOTE: SEE SECTION A-A AND B-B FOR ADDITIONAL INFORMATION



**ANCHOR ROD DETAIL**

ANCHOR ROD TABLE	
STRUCTURE TYPE	NUMBER REQ'D
20 FT TO 30 FT TYPE J CANTILEVERS	12 EA
35 FT TO 40 FT TYPE J CANTILEVERS	14 EA

NUTS: 4 PER ANCHOR ROD  
WASHERS: 4 PER ANCHOR ROD

NOT TO SCALE

MICHIGAN DEPARTMENT OF TRANSPORTATION

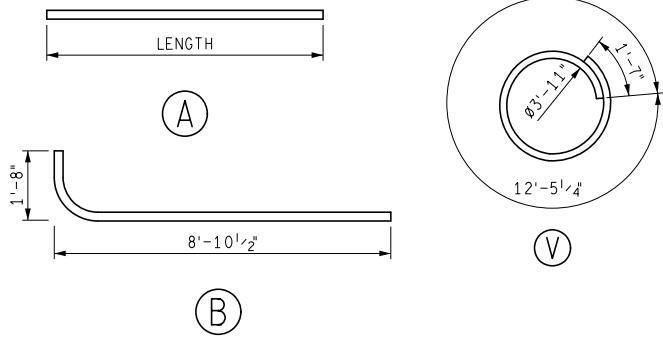
10/11/23  
F.H.W.A. APPROVAL

08/08/23  
PLAN DATE

SIGN-375-B

SHEET  
5 OF 6

STEEL REINFORCEMENT (EPOXY COATED)				
BAR	BAR SIZE	LENGTH	NUMBER REQUIRED	WEIGHT (LBS)
A1	#8	17'-6"	16	748
A2	#5	17'-6"	16	292
A3	#5	9'-6"	38	377
B1	#10	10'-6 <sup>1</sup> / <sub>2</sub> "	14	635
V1	#4	14'-0 <sup>1</sup> / <sub>4</sub> "	16	150



CONCRETE QUANTITIES	
FOOTING	13.4 CYD
PEDESTAL	4.5 CYD

**NOTES:**

THE DESIGN OF THIS FOUNDATION IS BASED ON THE AASHTO LRFDLTS-1 SPECIFICATIONS FOR STRUCTURAL SUPPORTS FOR HIGHWAY SIGNS, LUMINAIRES AND TRAFFIC SIGNALS, FIRST EDITION (2015), WITH 2017 TO 2022 INTERIM REVISIONS.

USE OF THESE DETAILS IS ONLY PERMITTED FOR FINISHED GRADES OF 1:3 OR FLATTER.

FOR SLOPES OF 1:6 OR FLATTER, DO NOT USE THIS FOOTING ON COHESIVE SOIL THAT HAS AN UNDRAINED SHEAR STRENGTH (Su) OF LESS THAN 1250 PSF.

FOR SLOPES BETWEEN 1:3 TO 1:6, DO NOT USE THIS FOOTING ON COHESIVE SOIL THAT HAS AN UNDRAINED SHEAR STRENGTH (Su) OF LESS THAN 1750 PSF.

DO NOT USE THIS FOOTING ON GRANULAR SOIL WITH STANDARD PENETRATION TEST N60-VALUES LESS THAN 5.

IF STEEL SHEET PILING IS REQUIRED FOR CONSTRUCTION OF THE FOUNDATION, THEN STEEL SHEET PILING, TEMP. LEFT IN PLACE WILL BE PAID FOR SEPARATELY. THE STEEL SHEET PILING MUST BE LEFT IN PLACE AND CUT OFF 1' BELOW FINISHED GROUND.

A 3<sup>1</sup>/<sub>2</sub>' SUBFOOTING MAY BE REQUIRED IF THE WATER TABLE IS HIGH OR WATER SEEPAGE INTO THE FOUNDATION EXCAVATION IS EXPECTED. THE CONCRETE FOR THE SUBFOOTING WILL BE PAID FOR SEPARATELY USING THE APPROPRIATE PAY ITEMS.

DIAMETER OF ROD HOLES IN TEMPLATES SHALL BE 1/16" LARGER THAN ANCHOR ROD DIAMETER.

DO NOT HAMMER ON ANCHOR RODS OR TEMPLATES.

AFTER THE TOP STEEL TEMPLATE IS REMOVED, THREAD NUTS ON TO RODS FLUSH WITH THE ROD END TO PROTECT THREADS UNTIL TRUSS IS ERECTED.

TEMPLATES MAY USE MULTIPLE PIECES JOINED BY TWO-SIDED COMPLETE JOINT PENETRATION WELDS, WITH WELDS AT LEAST 2" CLEAR OF ROD HOLES.

NOT TO SCALE

MICHIGAN DEPARTMENT OF TRANSPORTATION	10/11/23 F.H.W.A. APPROVAL	08/08/23 PLAN DATE	SIGN-375-B	SHEET 6 OF 6
---------------------------------------	-------------------------------	-----------------------	------------	-----------------