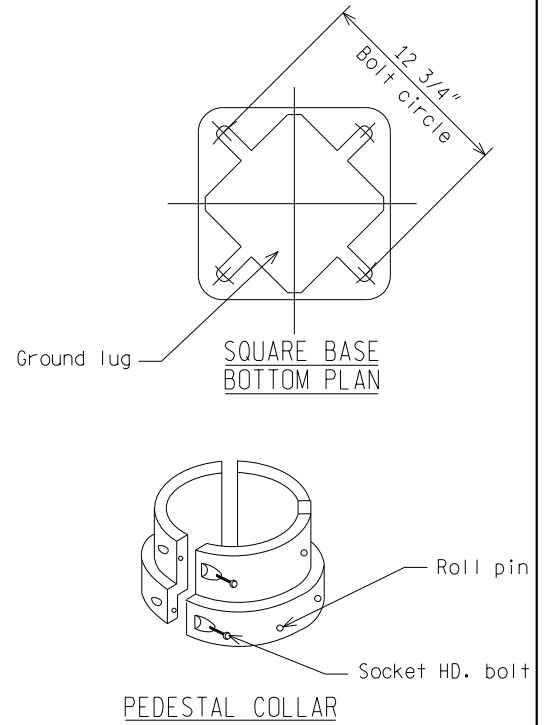
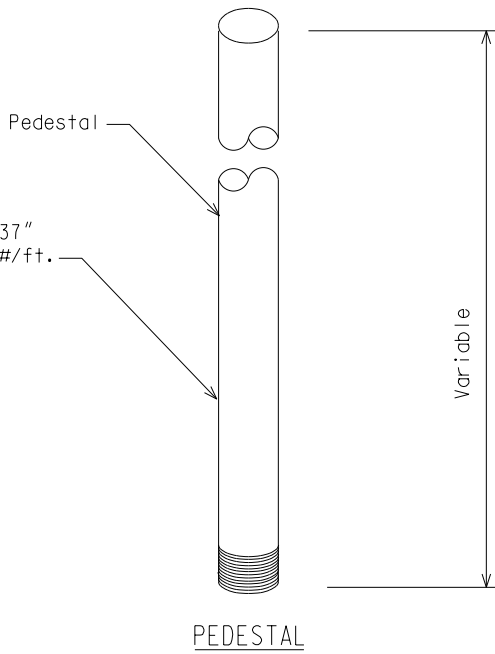
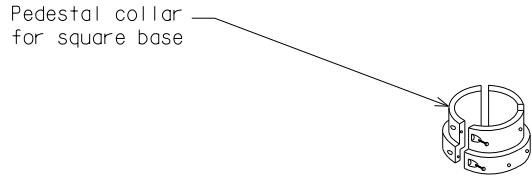


6063-T6 alloy, 4" x .237" wall schedule 40-3.73 #/ft. spun finish.



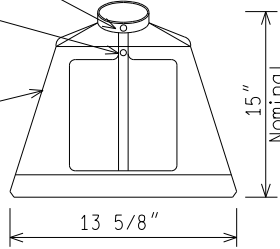
NOTE:
 1) Use pedestal collar for pedestal length of $\geq 14'$ (typical for 3-color traffic signal in combination with pedestrian signal)



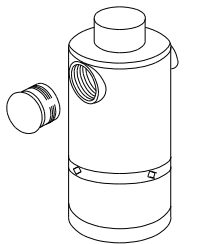
3/8"x1 1/4" stainless steel set screw

Cover held in place with a 5/16"-18x1" Hex head 300 grade stainless steel machine screw.

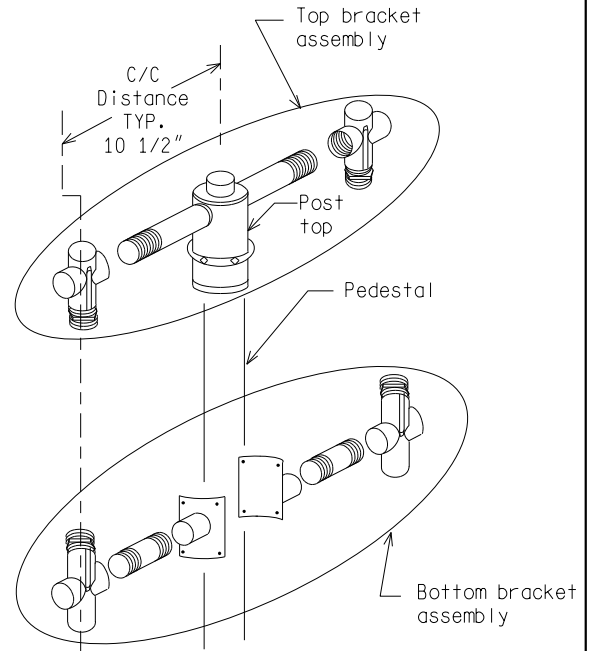
Frangible Square aluminum base



SQUARE ALUMINUM BASE



POST TOP (SLIP FITTER)



SIGNAL MOUNTING HARDWARE - STANDARD BRACKET

TRAFFIC/PEDESTRIAN SIGNAL MOUNTING HARDWARE

NOT TO SCALE

File: PW:RD/TR/Signals/Web/WC SD/Final

Rev. 10/21/14



PREPARED BY
TRAFFIC AND SAFETY

ENGINEER OF DELIVERY

ENGINEER OF DEVELOPMENT

MICHIGAN DEPARTMENT OF TRANSPORTATION
 BUREAU OF HIGHWAYS DELIVERY STANDARD PLAN FOR
**PEDESTAL FOUNDATION AND
 SIGNAL MOUNTING DETAILS**

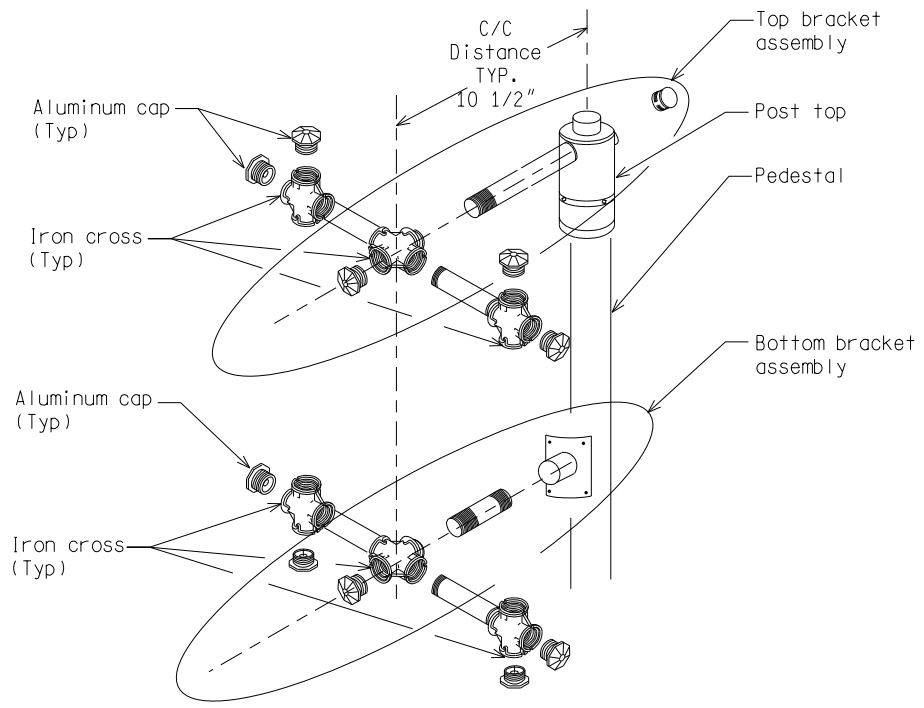
DRAWN BY:
CHECKED BY:

(SPECIAL DETAIL)
FHWA APPROVAL DATE

PLAN DATE

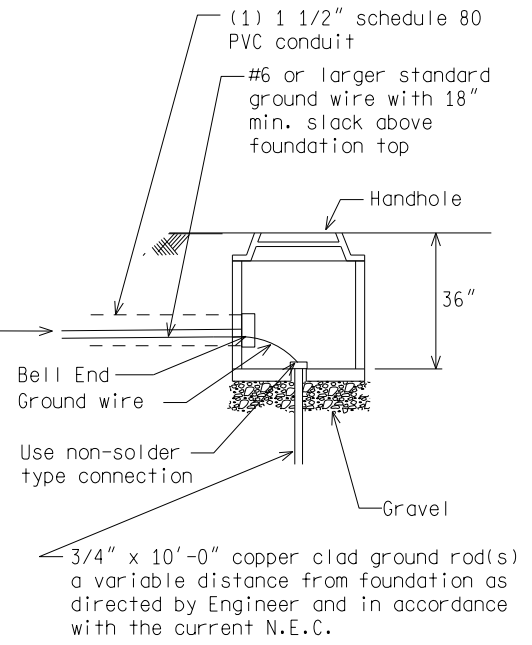
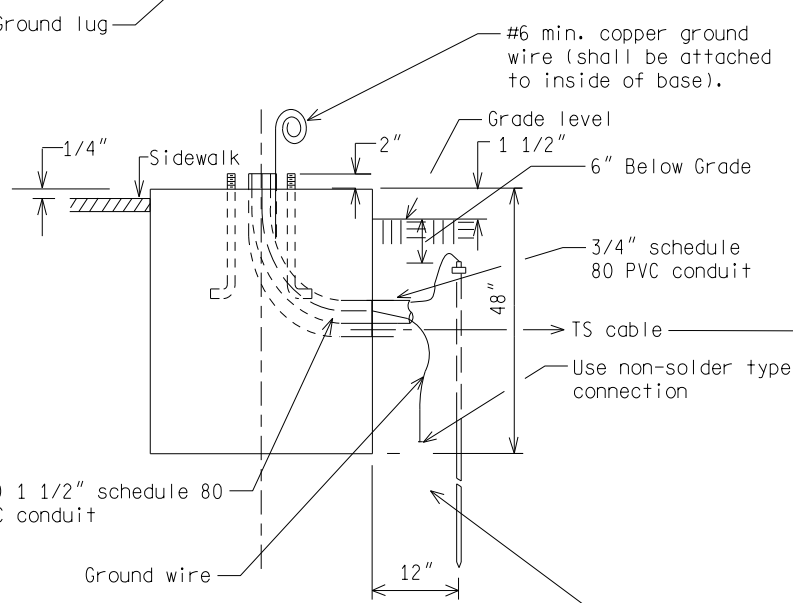
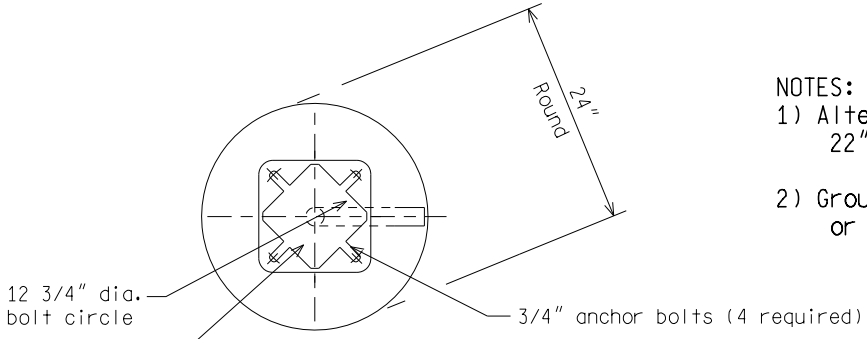
WC-028-B

SHEET
1 of 3



SIGNAL MOUNTING HARDWARE FOR BACKSIDE BRACKET

- NOTES:
- 1) Alternate foundation may be constructed 22"x22" square - 48" deep.
 - 2) Grounding system shall measure 10 ohm or less to ground.

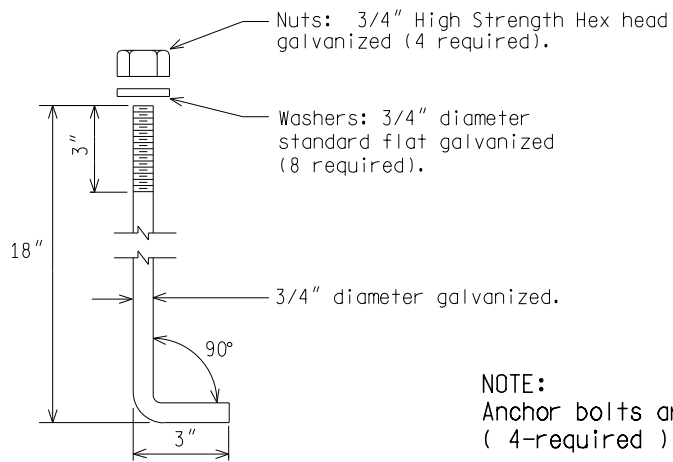


3/4"x10'-0" copper clad ground rod(s). (Ground rod(s) must be installed outside of fdn. (a min. of 12" from fdn.- 6" below grade) or as directed by the Engineer.)

PEDESTAL FOUNDATION

HANDHOLE DETAIL

NOT TO SCALE



NOTE:
Anchor bolts are to be ASTM A-307 steel
(4-required)

ANCHOR BOLT DETAIL

NOT TO SCALE

MICHIGAN DEPARTMENT OF TRANSPORTATION
BUREAU OF HIGHWAYS DELIVERY STANDARD PLAN

(SPECIAL DETAIL)
FHWA APPROVAL DATE

PLAN DATE

WC-028-B

SHEET
3 of 3