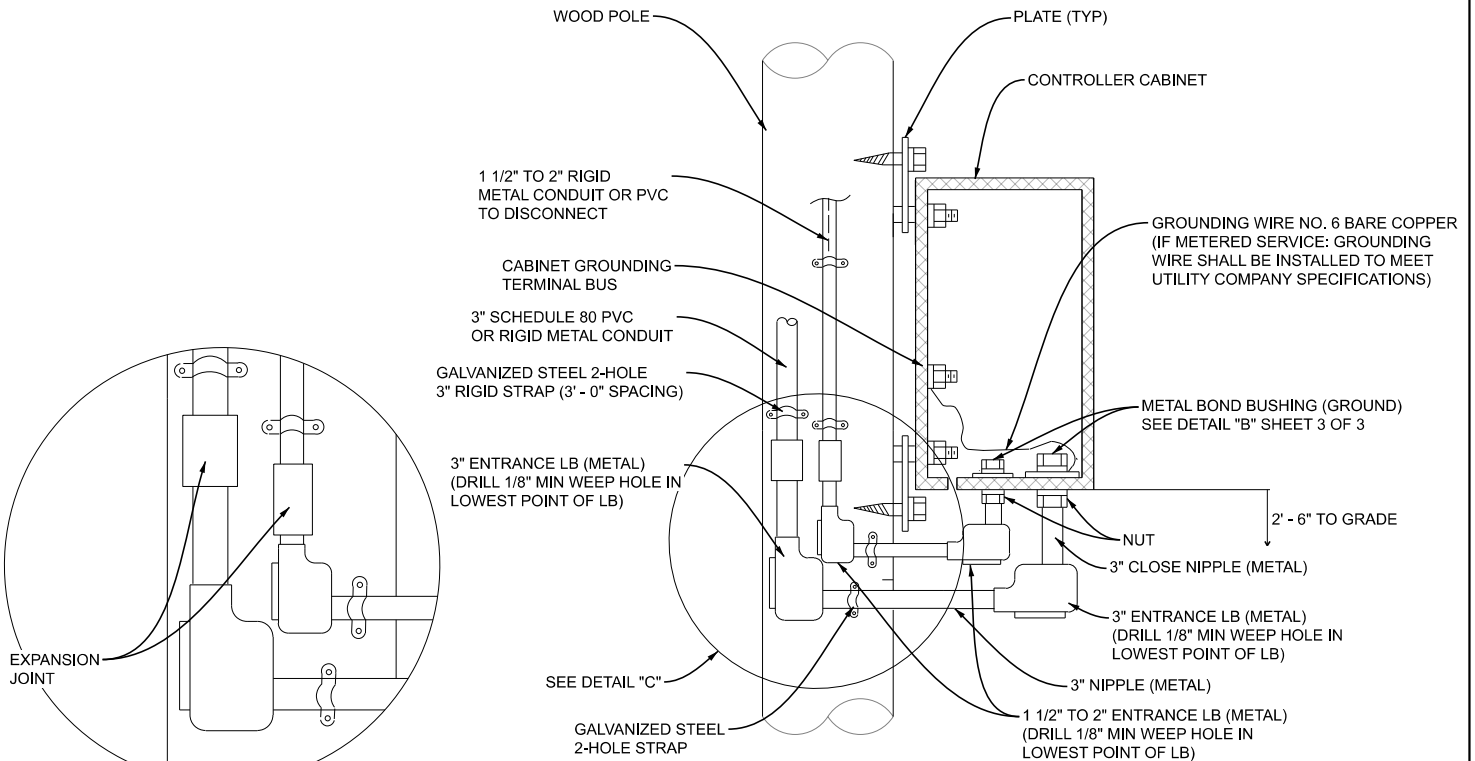
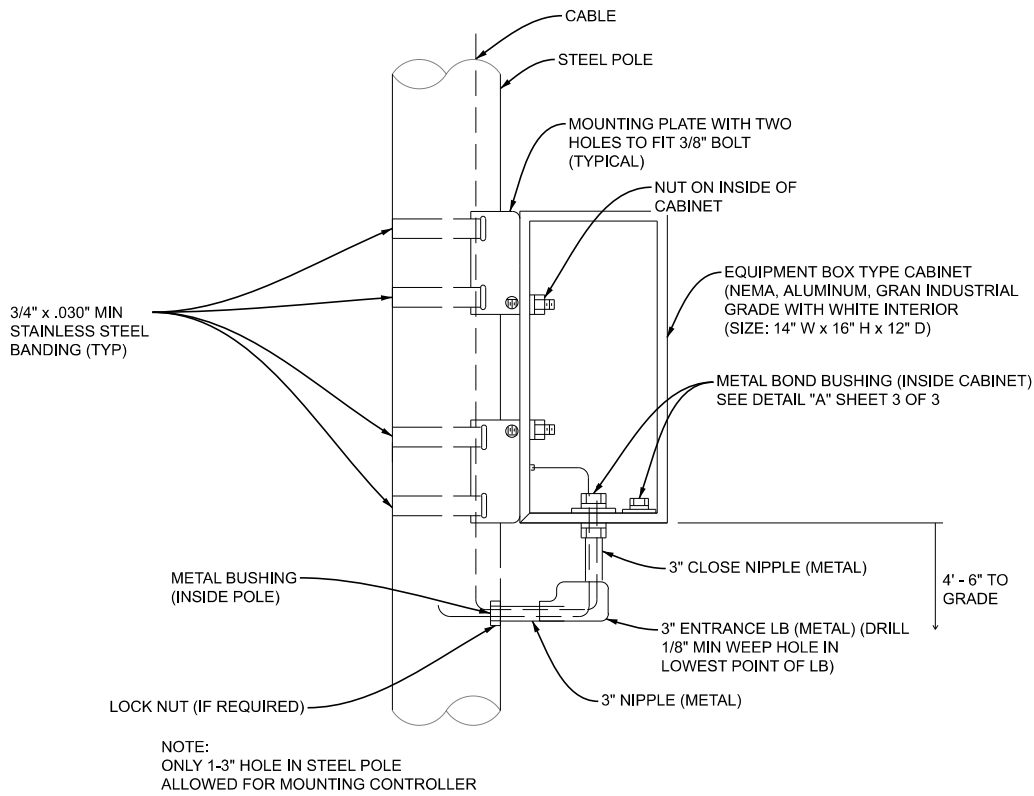


A CONTROLLER CABINET MOUNTED ON WOOD POLE
N.T.S.

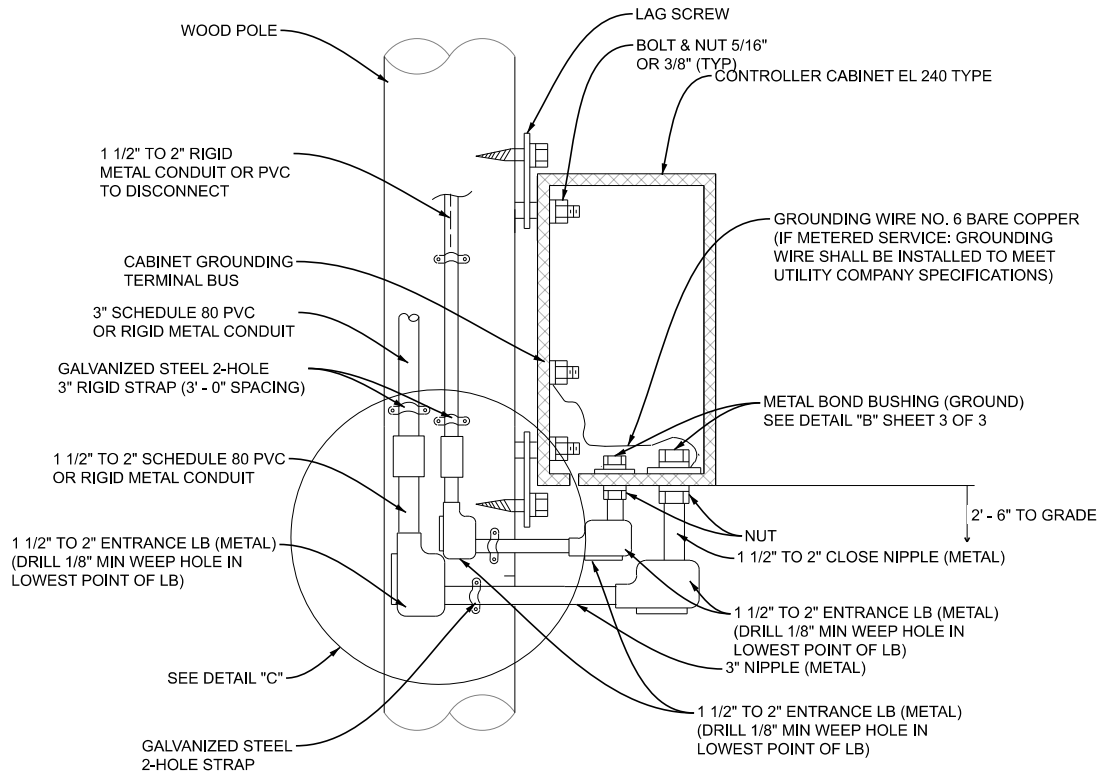


B CONTROLLER CABINET MOUNTED ON WOOD POLE
N.T.S.

APPROVED BY: _____ DIRECTOR, BUREAU OF FIELD SERVICES	<p>DEPARTMENT DIRECTOR BRADLEY C. WIEFERICH, PE</p>	STANDARD PLAN FOR CONTROLLER CABINET MOUNTED ON STEEL OR WOOD POLES		
APPROVED BY: _____ DIRECTOR, BUREAU OF DEVELOPMENT		(SPECIAL DETAIL) FHWA APPROVAL	11/17/22 PLAN DATE	SIG-100-A

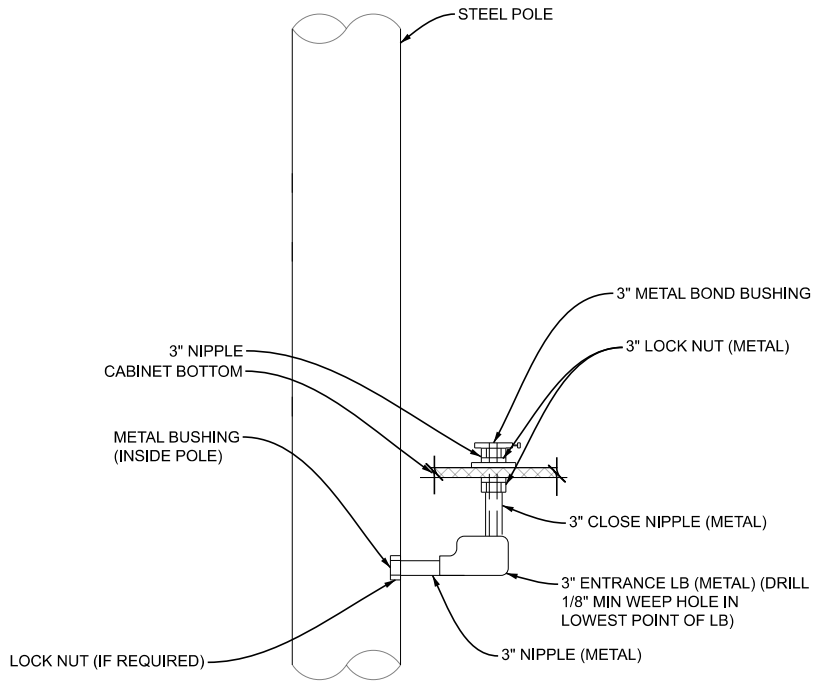


C FLASHING BEACON CABINET MOUNTED ON STEEL POLE
N.T.S.

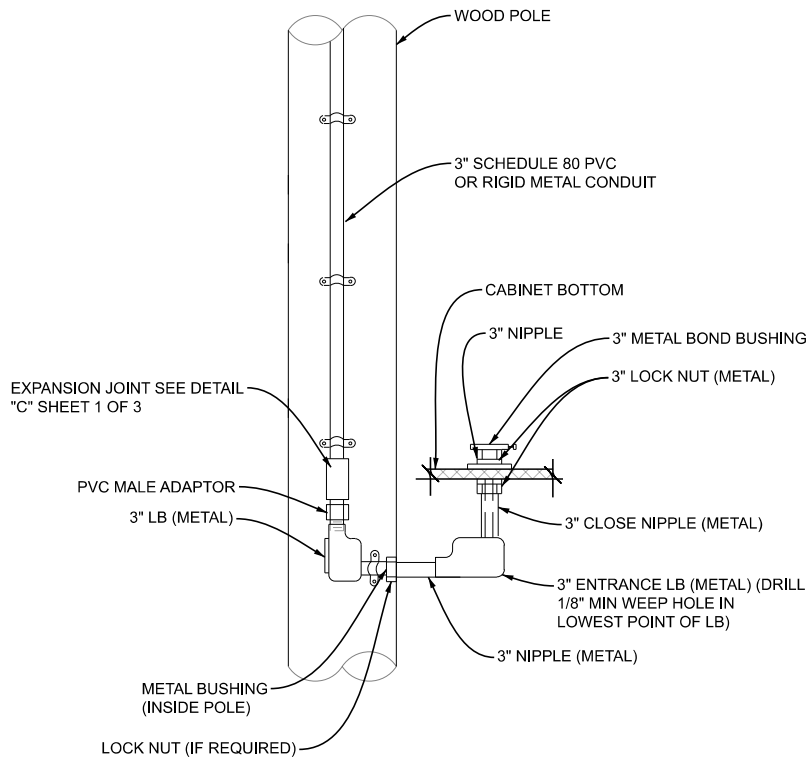


D CONTROLLER CABINET MOUNTED ON WOOD POLE
N.T.S.

<p>DEPARTMENT DIRECTOR BRADLEY C. WIEFERICH, PE</p>	STANDARD PLAN FOR CONTROLLER CABINET MOUNTED ON STEEL OR WOOD POLES		SIG-100-A	SHEET 2 OF 3 SECT
	(SPECIAL DETAIL) FHWA APPROVAL	11/17/22 PLAN DATE		



E CONTROLLER CABINET MOUNTED ON STEEL POLE
N.T.S.



F CONTROLLER CABINET MOUNTED ON WOOD POLE
N.T.S.

<p>DEPARTMENT DIRECTOR BRADLEY C. WIEFERICH, PE</p>	STANDARD PLAN FOR CONTROLLER CABINET MOUNTED ON STEEL OR WOOD POLES			SIG-100-A	SHEET 3 OF 3
	(SPECIAL DETAIL) FHWA APPROVAL	11/17/22 PLAN DATE			