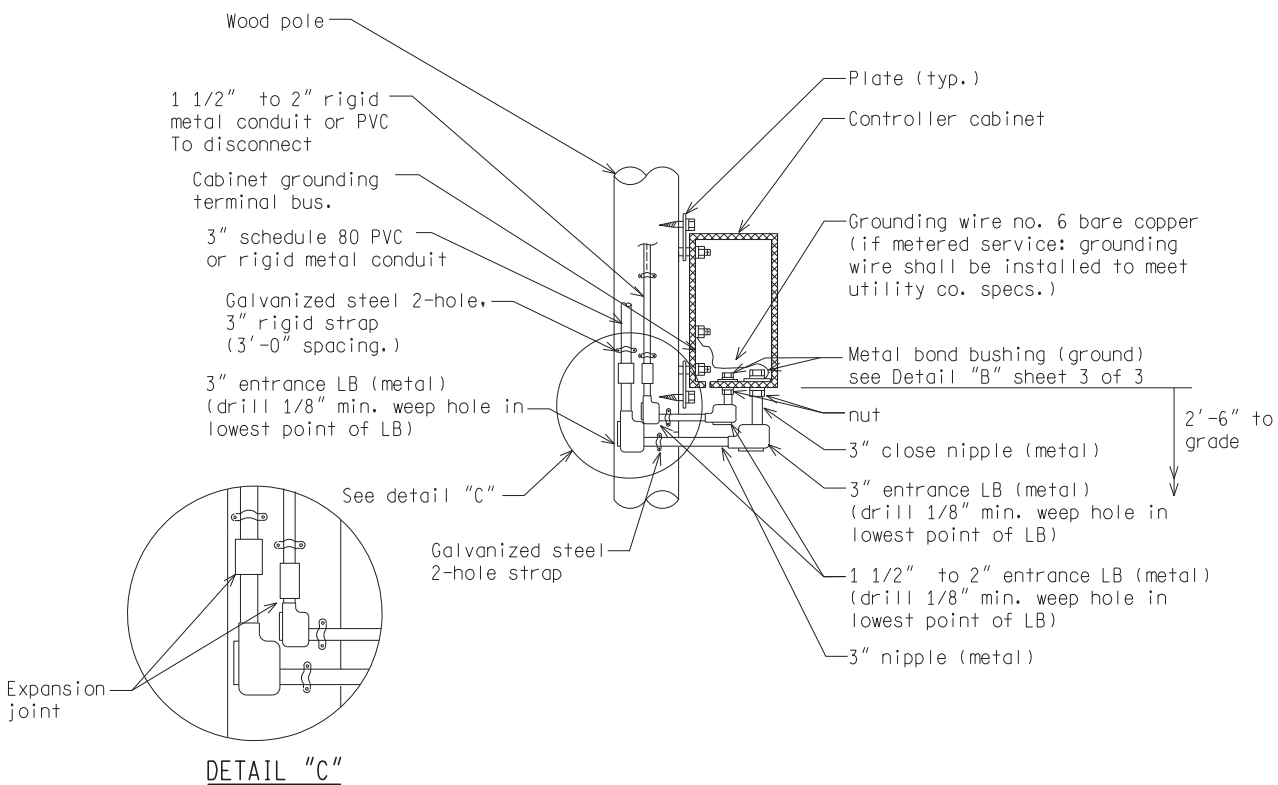


TRAFFIC SIGNAL CONTROLLER CABINET MOUNTED ON STEEL POLES



TRAFFIC SIGNAL CONTROLLER CABINET MOUNTED ON WOOD POLES

NOT TO SCALE

File: RefDoc/TR/Signals/Web/Sp Det/Fin/SIG100A.dgn Rev: 02/16/17



PREPARED BY
TRAFFIC AND SAFETY

DRAWN BY: DJF

CHECKED BY:

ENGINEER OF DELIVERY

ENGINEER OF DEVELOPMENT

(SPECIAL DETAIL)

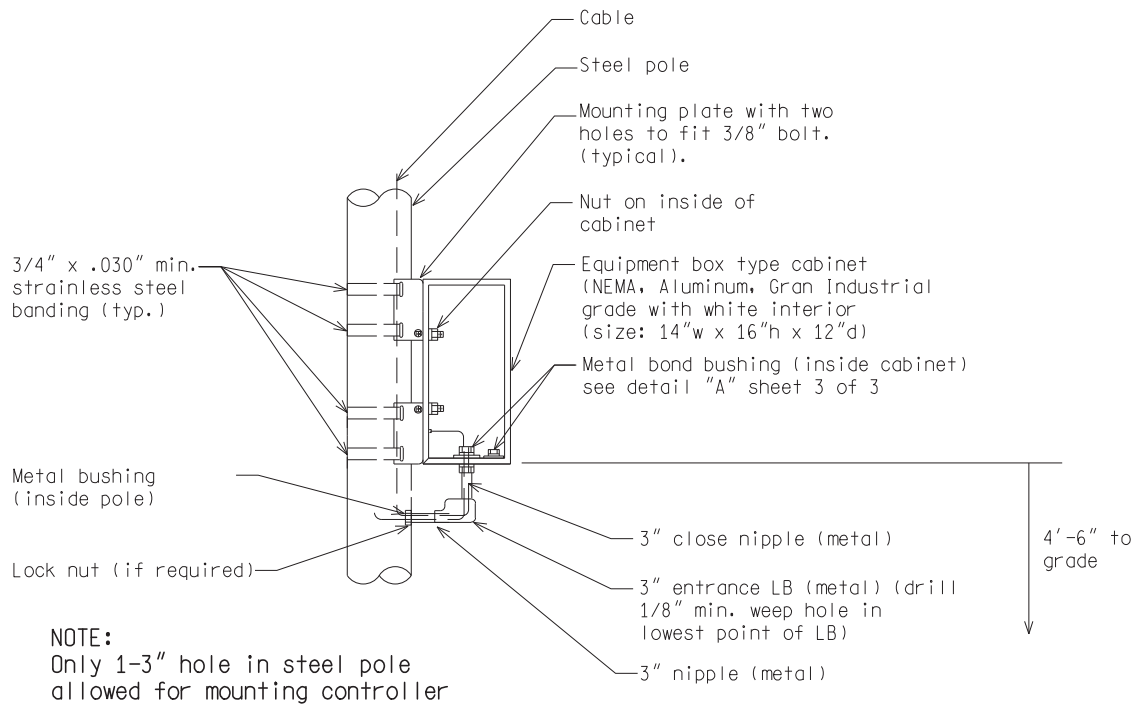
FHWA APPROVAL DATE

MICHIGAN DEPARTMENT OF TRANSPORTATION
BUREAU OF HIGHWAYS DELIVERY STANDARD PLAN FOR
**CONTROLLER CABINET MOUNTED
ON STEEL OR WOOD POLES**

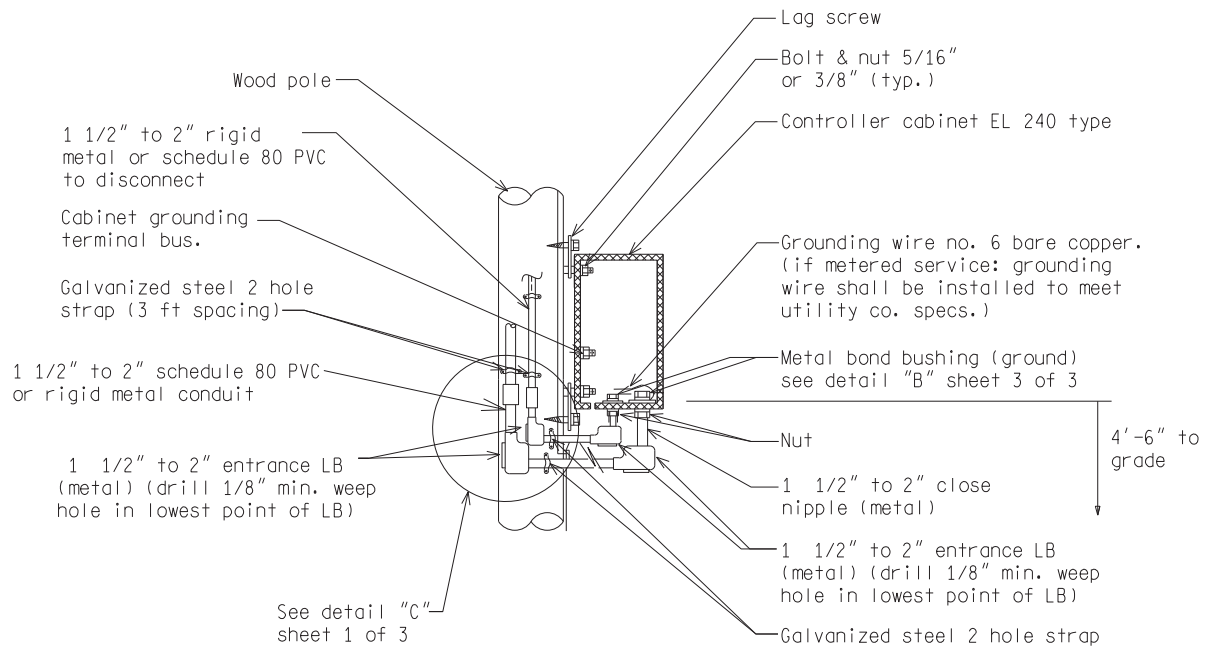
PLAN DATE

SIG-100-A

SHEET
1 of 3



FLASHING BEACON CONTROLLER CABINET
(EQUIPMENT BOX) MOUNTED ON STEEL POLES



FLASHING BEACON CONTROLLER CABINET (EL 240 TYPE OR EQUIVALENT)
MOUNTED ON WOOD POLES

NOT TO SCALE

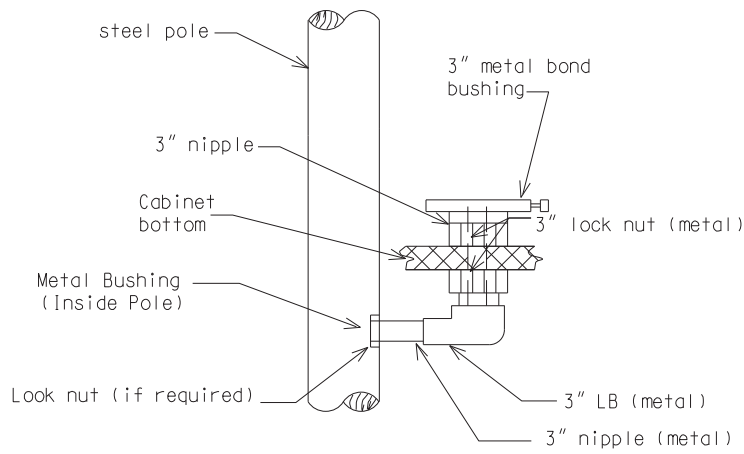
MICHIGAN DEPARTMENT OF TRANSPORTATION
BUREAU OF HIGHWAYS DELIVERY STANDARD PLAN

(SPECIAL DETAIL)
FHWA APPROVAL DATE

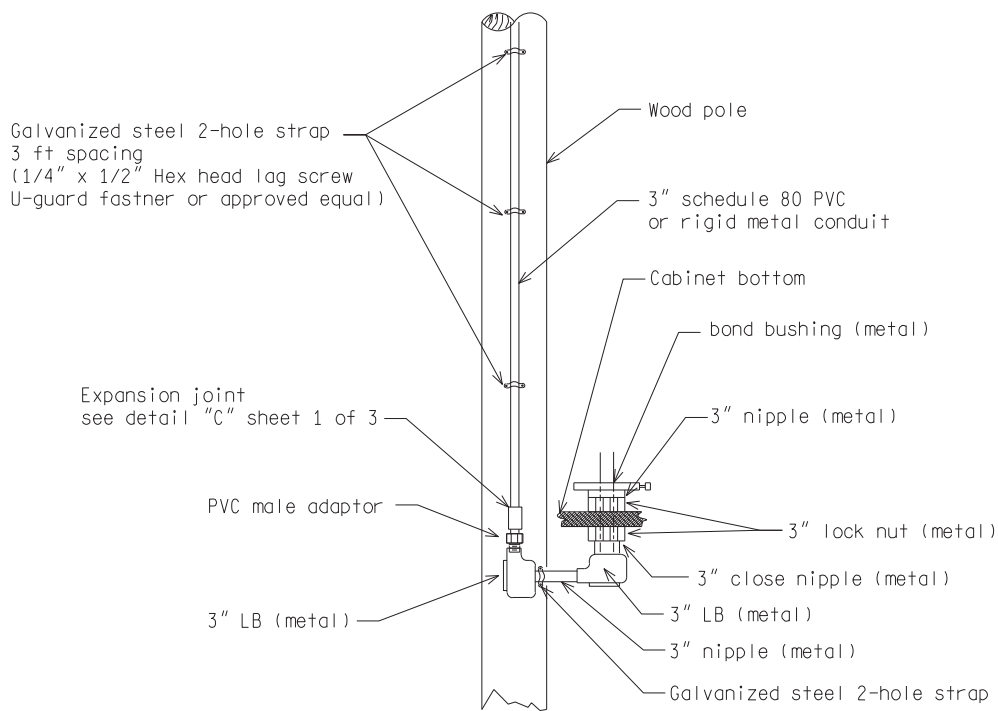
PLAN DATE

SIG-100-A

SHEET
2 of 3



CONTROLLER CABINET MOUNTED ON STEEL POLE DETAIL "A"



CONTROLLER CABINET MOUNTED ON WOOD POLE DETAIL "B"

NOTE:
 The distance between LB's as shown on this detail is for clarity of the drawing only. Actual distance between LB's shall be minimized as is practical to the installation.

NOTE:
 If rigid metal conduit is used, the conduit must be bonded according to the current N.E.C.

NOT TO SCALE

MICHIGAN DEPARTMENT OF TRANSPORTATION
 BUREAU OF HIGHWAYS DELIVERY STANDARD PLAN

(SPECIAL DETAIL)
 FHWA APPROVAL DATE

PLAN DATE

SIG-100-A

SHEET
 3 of 3