

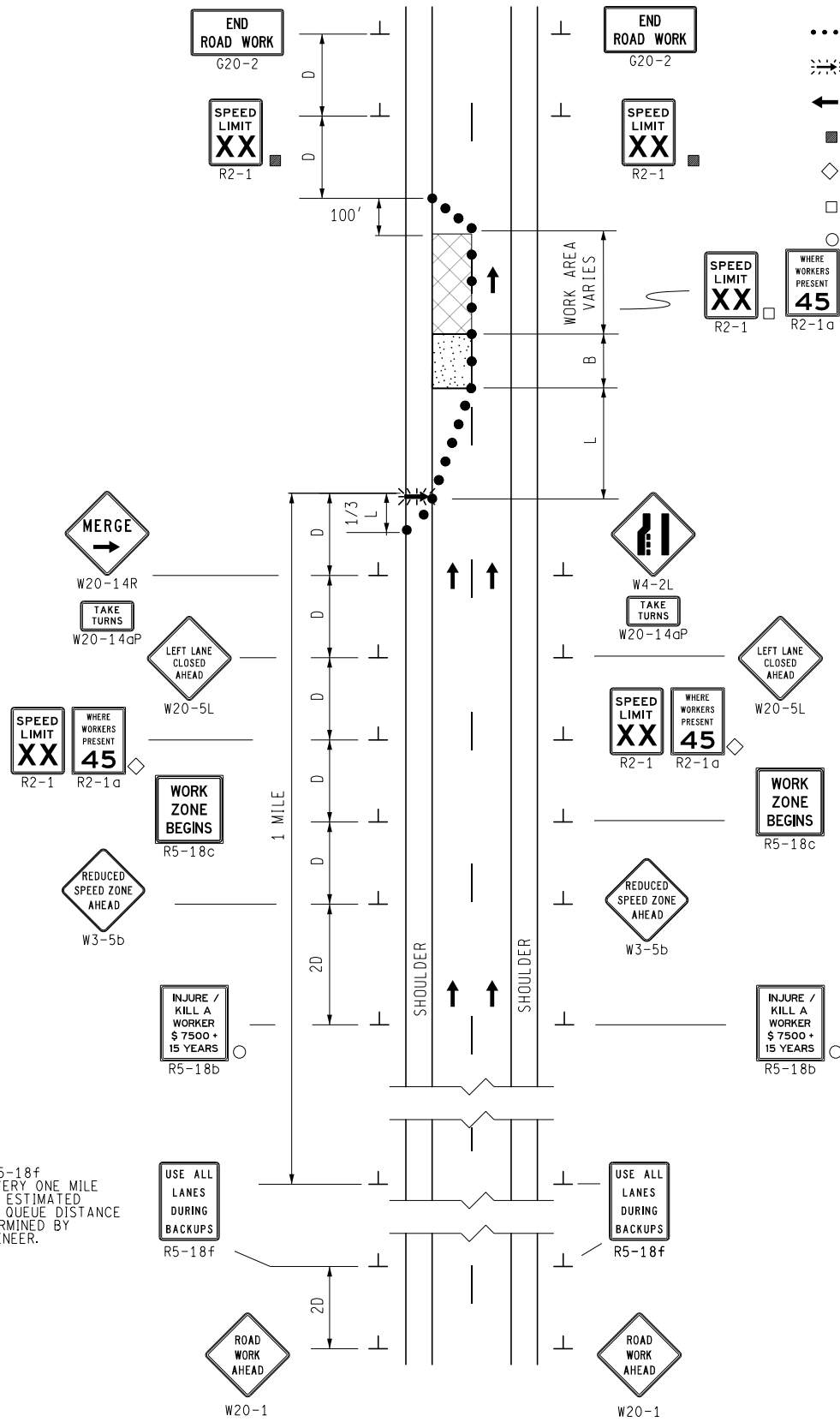
KEY

- CHANNELIZING DEVICES
- ⚡ LIGHTED ARROW PANEL
- ← TRAFFIC FLOW
- REFLECTS EXISTING SPEED LIMIT
- ◇ R2-1a OPTIONAL
- PLACE SIGN AS INDICATED IN NOTE S5
- PLACE SIGN AS INDICATED IN NOTE S2

STANDARD NOTES

(SEE 102-GEN-NOTES)

GENERAL: G1, G2, G3, G4
 SIGNING: S1, S2, S3, S5, S6, S8
 DEVICES: TCD1, TCD2, TCD6



PLACE R5-18f SIGNS EVERY ONE MILE FOR THE ESTIMATED MAXIMUM QUEUE DISTANCE AS DETERMINED BY THE ENGINEER.