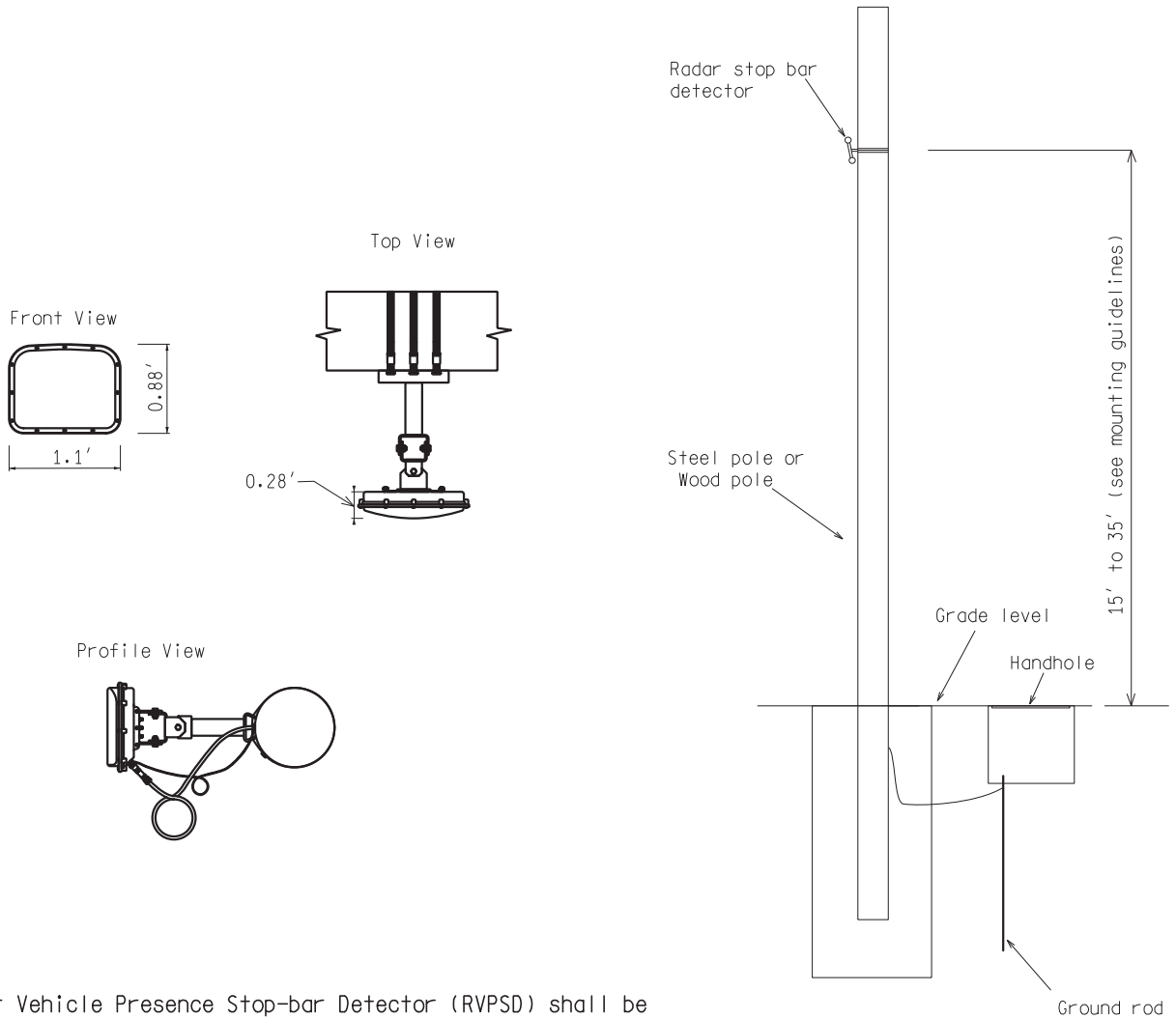


RADAR VEHICLE PRESENCE STOP-BAR DETAIL



Note:
Radar Vehicle Presence Stop-bar Detector (RVPSD) shall be installed and configured in coordination with agency and/or manufacturer representative.

NOT TO SCALE

File: RefDoc/TR/Signals/Web/Sp Det/FIn/SIG460A.dgn Rev.



PREPARED BY
TRAFFIC AND SAFETY

DRAWN BY: DSP

CHECKED BY:

ENGINEER OF DELIVERY

ENGINEER OF DEVELOPMENT

(SPECIAL DETAIL)
FHWA APPROVAL DATE

MICHIGAN DEPARTMENT OF TRANSPORTATION
BUREAU OF HIGHWAYS DELIVERY STANDARD PLAN FOR

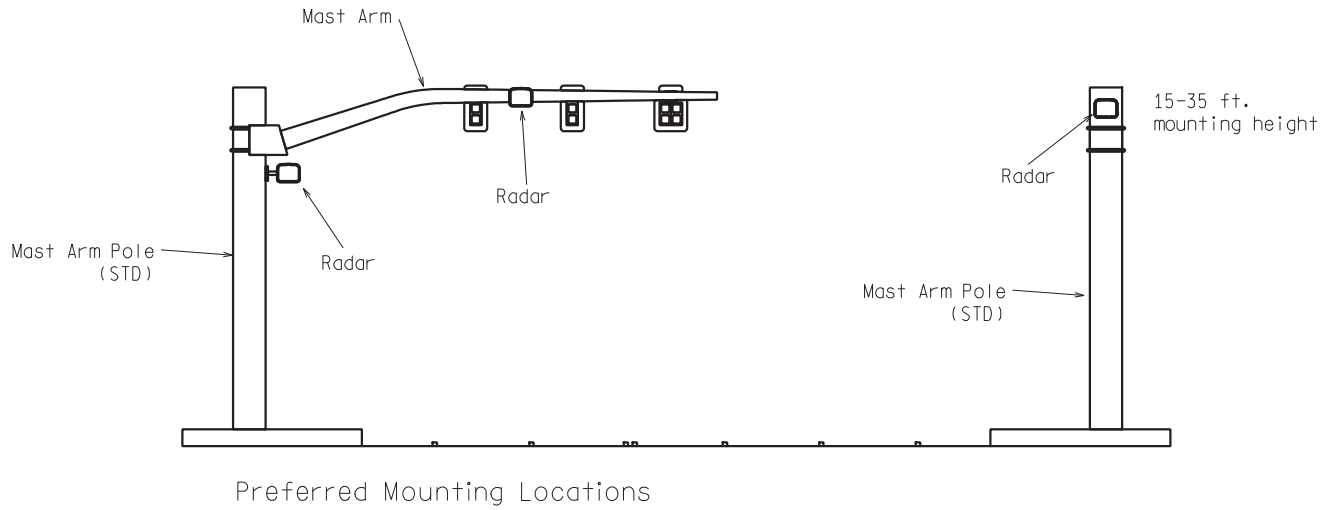
RADAR STOP BAR DETECTION

02/16/17
PLAN DATE

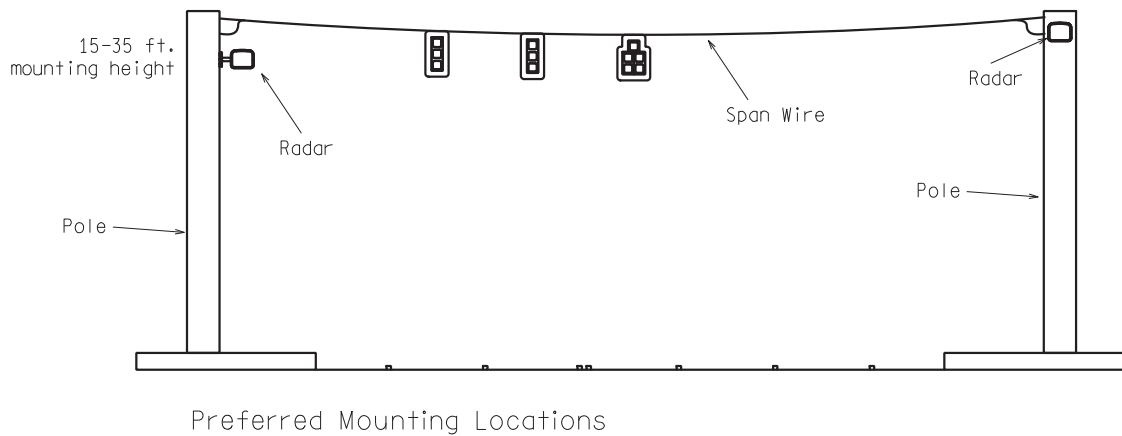
SIG-460-A

SHEET
1 of 2

RADAR VEHICLE PRESENCE STOP-BAR DETECTOR
MAST ARM INSTALLATION DETAIL



RADAR VEHICLE PRESENCE STOP-BAR DETECTOR
SPAN WIRE INSTALLATION DETAIL



NOT TO SCALE

MICHIGAN DEPARTMENT OF TRANSPORTATION BUREAU OF HIGHWAYS DELIVERY STANDARD PLAN	(SPECIAL DETAIL) FHWA APPROVAL DATE	02/16/17	SIG-460-A	SHEET 2 of 2
File: RefDoc/TR/Signals/Web/Sp Det/Fin/SIG460A.dgn Rev.		PLAN DATE		