

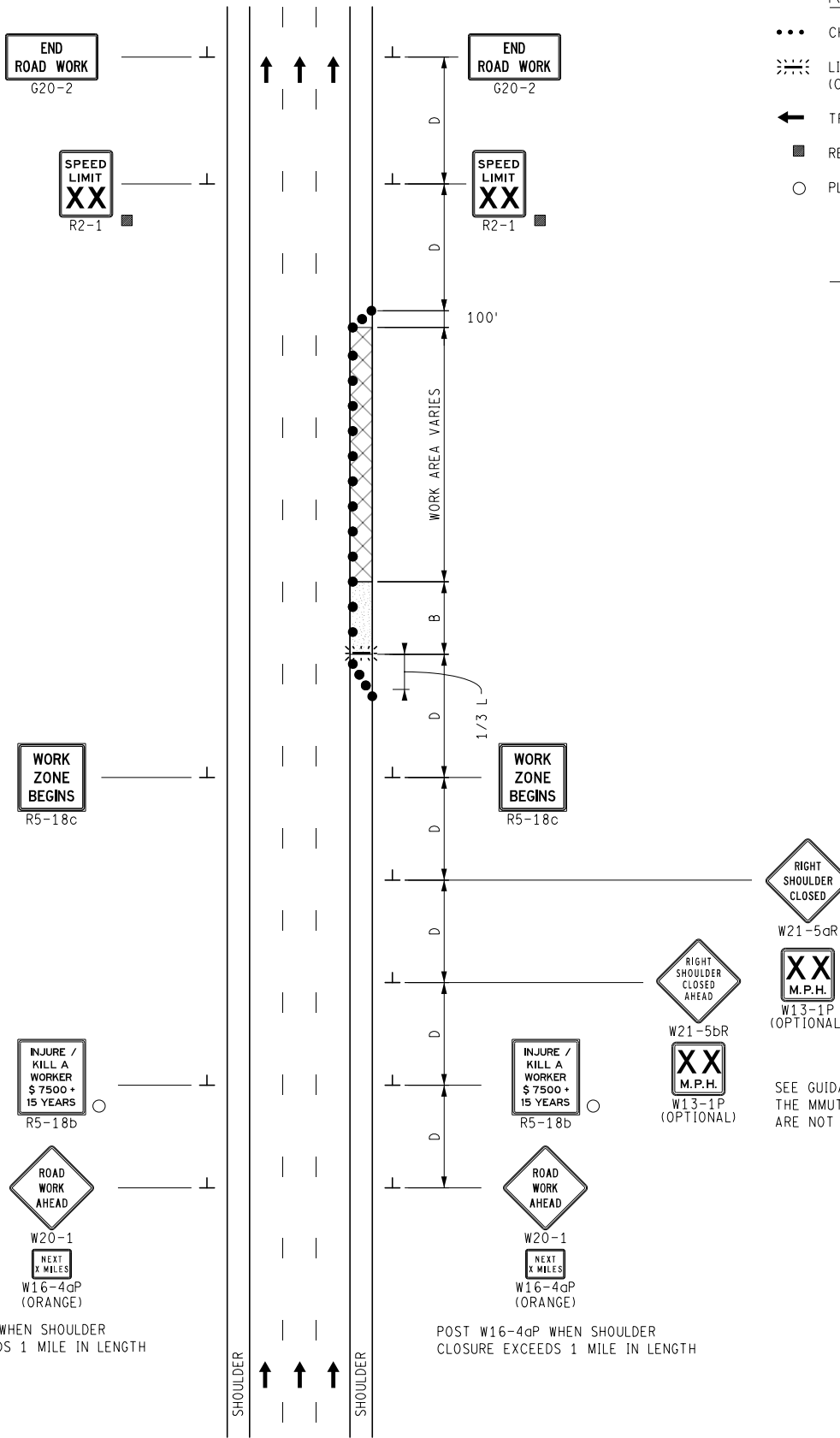
KEY

- CHANNELIZING DEVICES
- ⚡ LIGHTED ARROW PANEL (CAUTION MODE)
- ← TRAFFIC FLOW
- REFLECTS EXISTING SPEED LIMIT
- PLACE SIGN AS INDICATED IN NOTE S2.

STANDARD NOTES

(SEE 102-GEN-NOTES)

GENERAL: G1, G2, G3, G4
 SIGNING: S1, S3, S5
 DEVICES: TCD1, TCD2, TCD6



SEE GUIDANCE NOTE 03 IN SECTION 66.07 OF THE MMUTCD FOR WHY THE SIGNS ON THE LEFT ARE NOT NEEDED