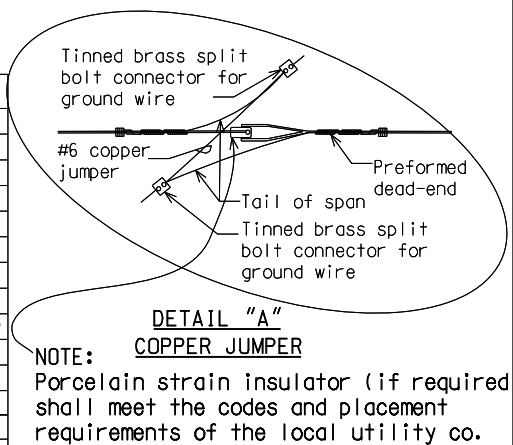


NO.	ITEM
1	Traffic signal (no. heads as indicated)
2	Span wire hanger
3	5/16" extra high strength span wire
4	3" Service cap (weatherhead), (metal for steel and PVC for wood poles)
5	P.J. traffic signal cable (as specified)
6	Preformed lashing rods
7	Pole band clamp (steel pole)
8	Guy thimble (2" dia.)
9	(2) 5/8" x 4" long bolt, nut, washers per pole band clamp (steel pole)
10	Install span wire preformed (armor rod) under each span hanger
11	Access hand hole all new & existing steel poles
12	5/8" eyebolt, oval eye and nut
13	Wood moulding or plastic duct (10' from ground level)
14	3" schedule 80 PVC or rigid metal (*) See note on sheet 2 of 5
15	Preformed guy grip dead ends



NOT TO SCALE

File: RefDoc/TR/Signals/Web/Sp Det/Fin/SIG010A.dgn Rev. 02/16/17

MICHIGAN DEPARTMENT OF TRANSPORTATION
BUREAU OF HIGHWAYS DELIVERY STANDARD PLAN FOR
ALL SPAN WIRE T.S. ON STEEL AND WOOD POLES

SIG-010-A

SHEET 1 of 7

MDOT
Michigan Department of Transportation

ENGINEER OF DELIVERY

ENGINEER OF DEVELOPMENT

(SPECIAL DETAIL)

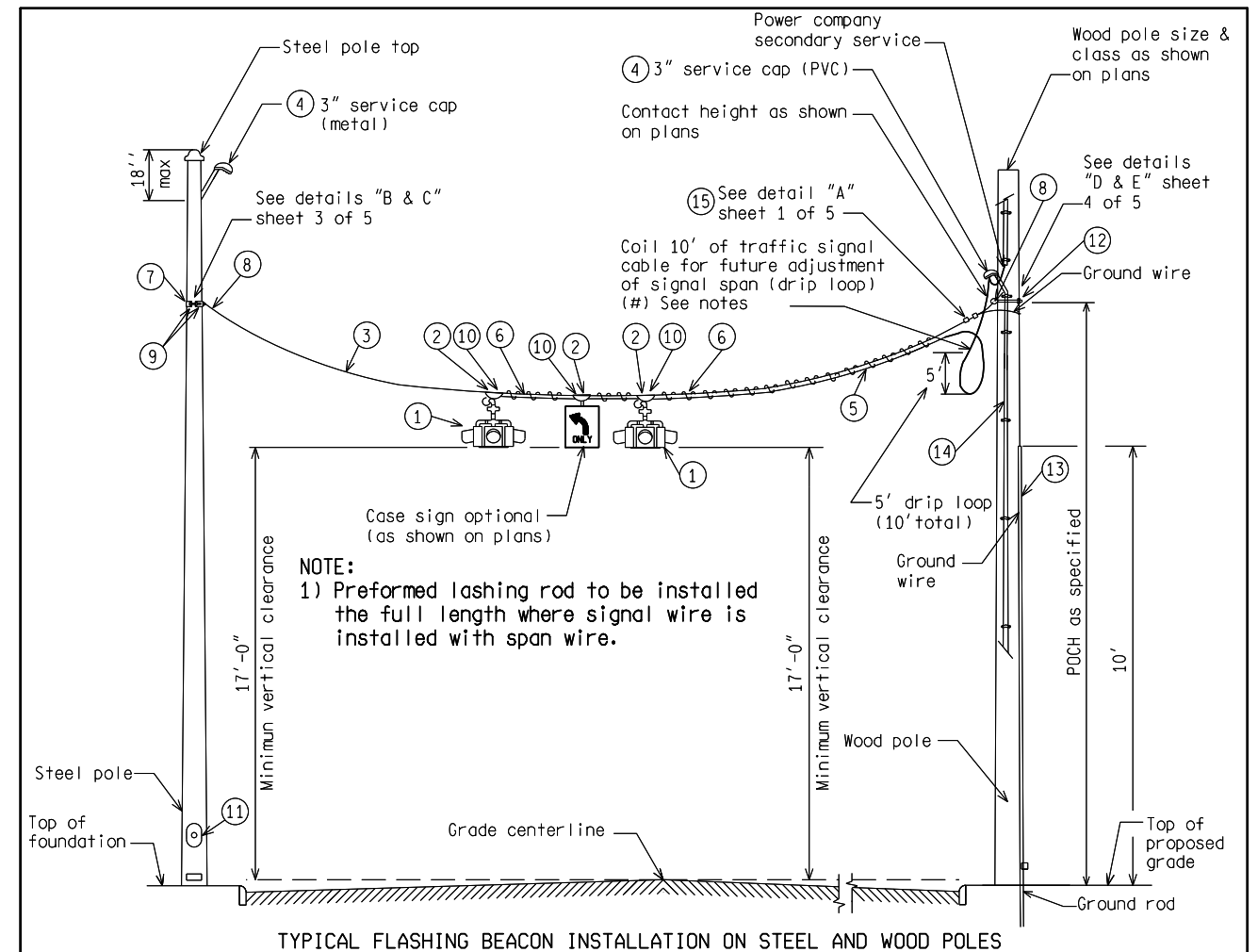
FHWA APPROVAL DATE

PLAN DATE

PREPARED BY
TRAFFIC AND SAFETY

DRAWN BY: DJF

CHECKED BY:



NO.	ITEM
1	Traffic signal (no. heads as indicated)
2	Span wire hanger
3	5/16" extra high strength span wire
4	3" service cap (weatherhead), (metal for steel and PVC for wood poles)
5	P.J. traffic signal cable (as specified)
6	Preformed lashing rods
7	Pole band clamp (steel pole)
8	Guy thimble (2" dia.)
9	(2) 5/8" x 4" long bolt, nut, washers per pole band clamp (steel pole)
10	Install span wire preformed (armor rod) under each span hanger
11	Access hand hole all new & existing steel poles
12	5/8" eyebolt, oval eye and nut
13	Wood moulding or plastic duct (10' from ground level)
14	1 1/2" to 2" schedule 80 PVC or rigid metal (*) See note
15	Preformed guy grip dead ends

NOTES:

(*) For projects maintained by the Wayne Co. Department of Public Services (WCPS), use rigid metal for conduit(s) from grade level to 10' (min.) above grade or as directed by the Engineer.

(#) For projects maintained by the Road Commission for Oakland County (RCOC), use drip loop (without coil) for future adjustment of signal span.

NOT TO SCALE

MICHIGAN DEPARTMENT OF TRANSPORTATION
BUREAU OF HIGHWAYS DELIVERY STANDARD PLAN
(SPECIAL DETAIL)
FHWA APPROVAL DATE

File: RefDoc/TR/Signals/Web/Sp Det/Fin/SIG010A.dgn Rev. 02/16/17

SIG-010-A

SHEET 2 of 7

PLAN DATE

AS-LET PLAN REVISIONS								DRAWING		SHEET
NO.	DATE	AUTH	DESCRIPTION	NO.	DATE	AUTH	DESCRIPTION			

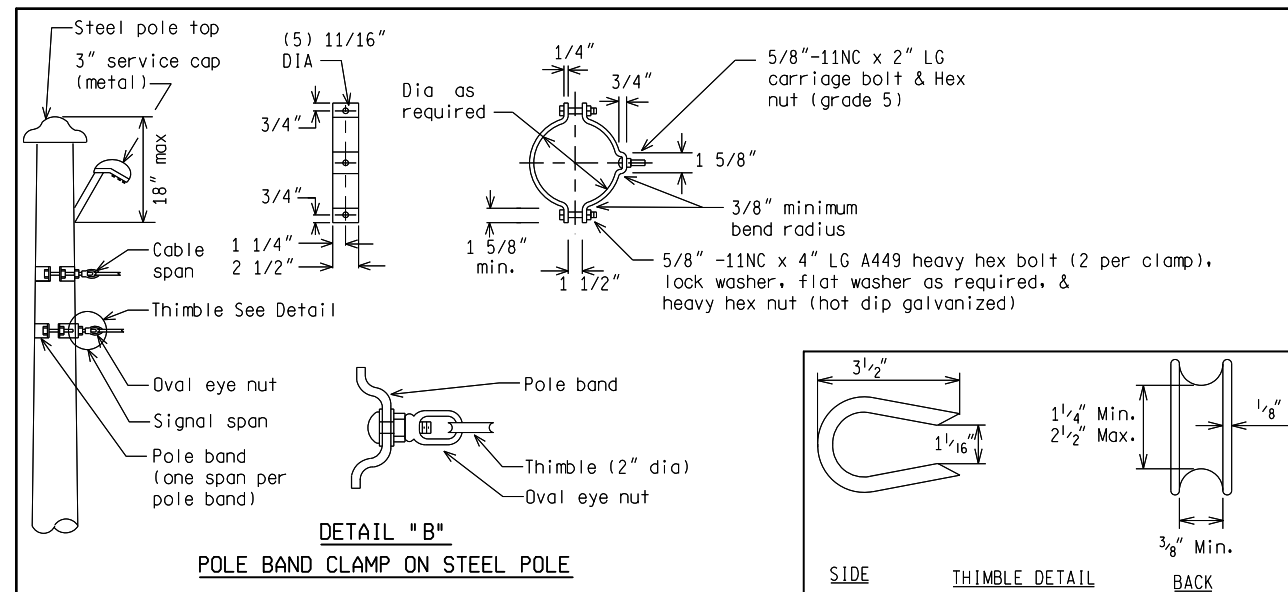
MDOT
Michigan Department of Transportation

DATE: CS:

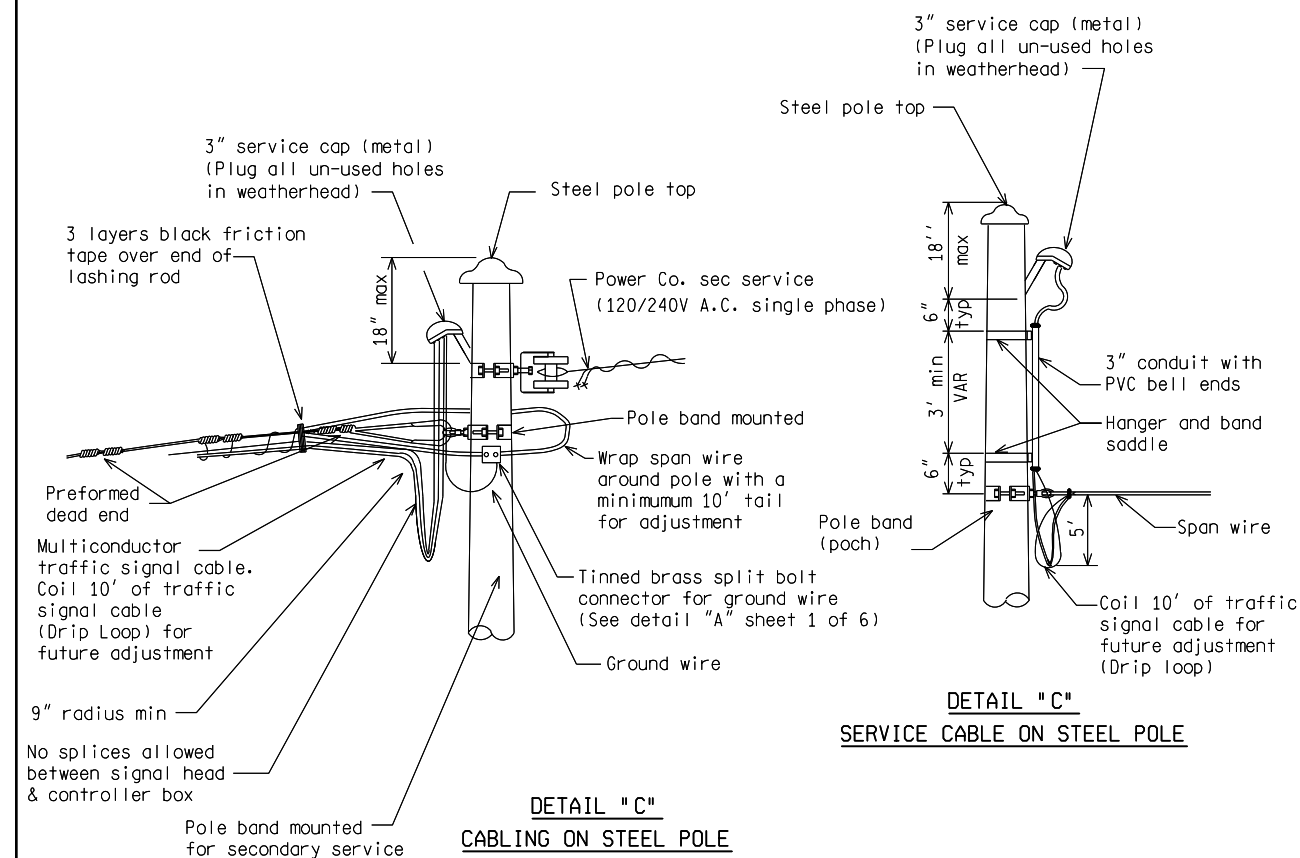
DESIGN UNIT: JN:

TSC:

FILE:

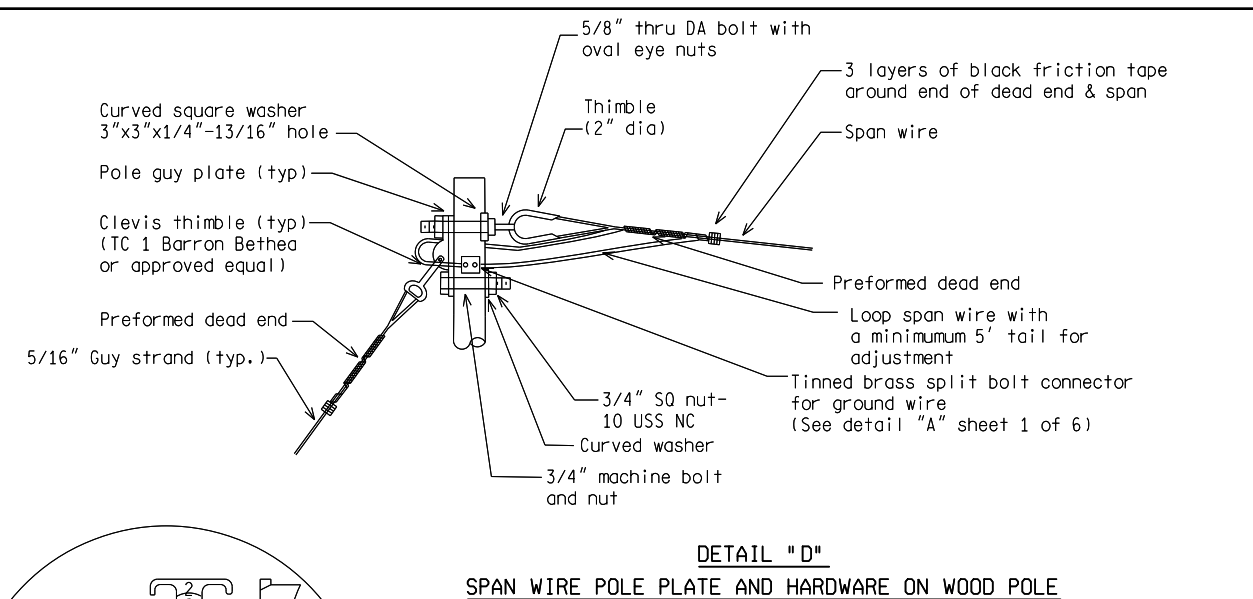


ASTM A36 steel pole band clamps must be stamped with identification that is traceable back to the manufacturer, which can be used to determine the month and year of clamp manufacture. The stamping method must be a low stress stamping method. The stamp cannot be located near the bolted flange, must be located near the center of the clamp on the back side facing away from traffic, and be visible after galvanizing. All bend radii are to be a minimum of 1.5 times the pole band thickness.

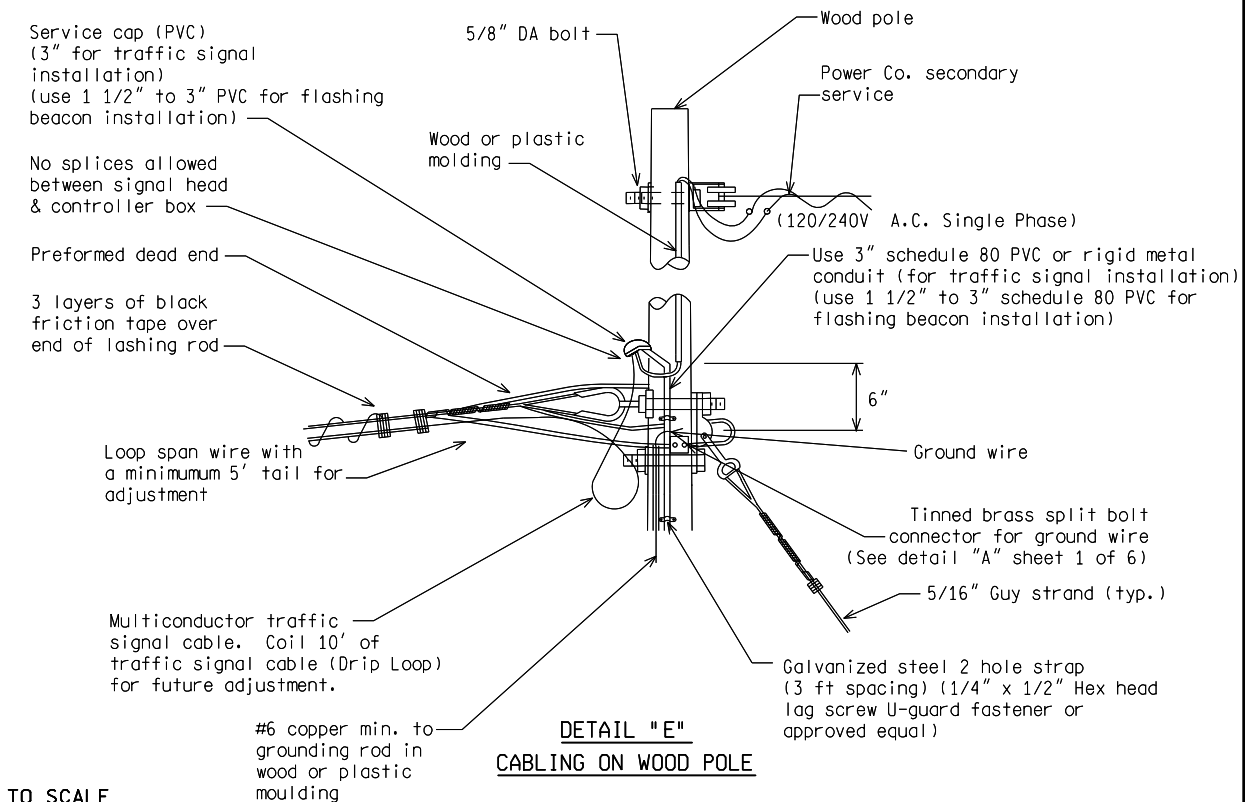
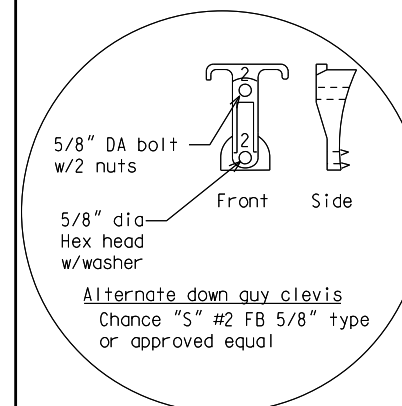


NOT TO SCALE

MICHIGAN DEPARTMENT OF TRANSPORTATION BUREAU OF HIGHWAYS DELIVERY STANDARD PLAN		(SPECIAL DETAIL) FHWA APPROVAL DATE	SIG-010-A	SHEET 3 of 7
File: RefDoc/TR/Signals/Web/Sp Det/Fin/SIG010A.dgn Rev. 02/16/17		PLAN DATE		




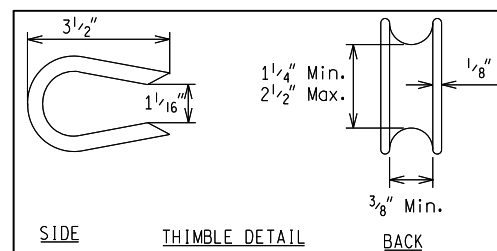
NOTE:
Porcelain strain insulator (if required)
shall meet the codes and placement
requirements of the local utility co.



NOT TO SCALE

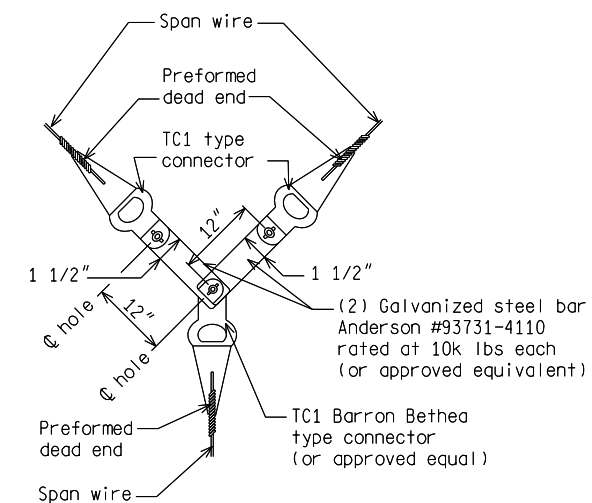
MICHIGAN DEPARTMENT OF TRANSPORTATION BUREAU OF HIGHWAYS DELIVERY STANDARD PLAN		(SPECIAL DETAIL) FHWA APPROVAL DATE	SIG-010-A	SHEET 4 of 7
File: RefDoc/TR/Signals/Web/Sp Det/Fin/SIG010A.dgn Rev. 02/16/17		PLAN DATE		

AS-LET PLAN REVISIONS											DATE:	CS:	DRAWING	SHEET
NO.	DATE	AUTH	DESCRIPTION	NO.	DATE	AUTH	DESCRIPTION				DESIGN UNIT:			
									FILE:	TSC:	JN:			

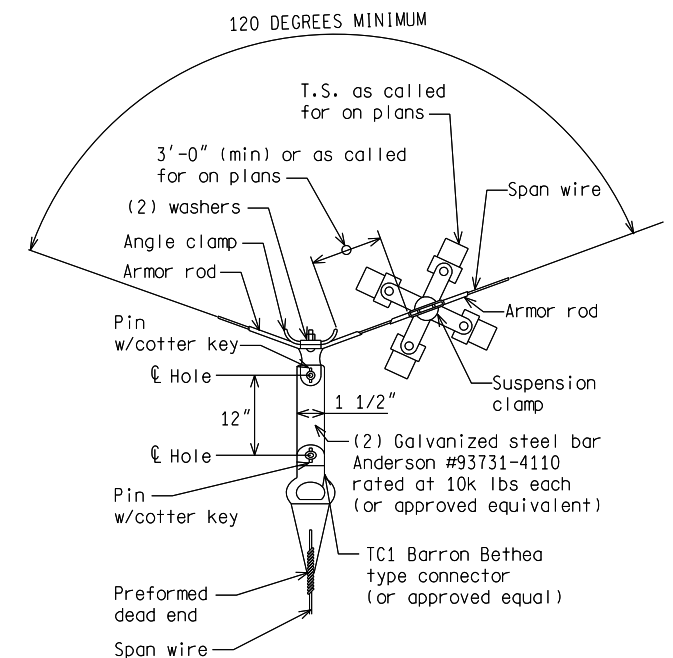


NOT TO SCALE

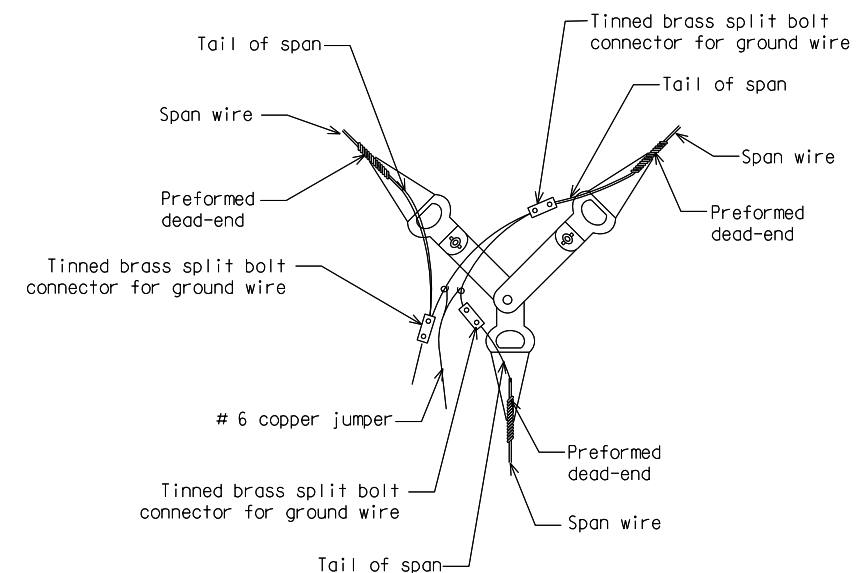
MICHIGAN DEPARTMENT OF TRANSPORTATION BUREAU OF HIGHWAYS DELIVERY STANDARD PLAN		(SPECIAL DETAIL) FHWA APPROVAL DATE	SIG-010-A	SHEET 5 of 7
File: RefDoc/TR/Signals/Web/Sp Det/Fin/SIG010A.dgn Rev. 02/16/17		PLAN DATE		



PULL-OFF CONNECTION DETAIL (ALTERNATE)
FOR 3-WAY SUSPENSION




PULL-OFF CONNECTION DETAIL (ALTERNATE)
FOR 3-WAY SUSPENSION

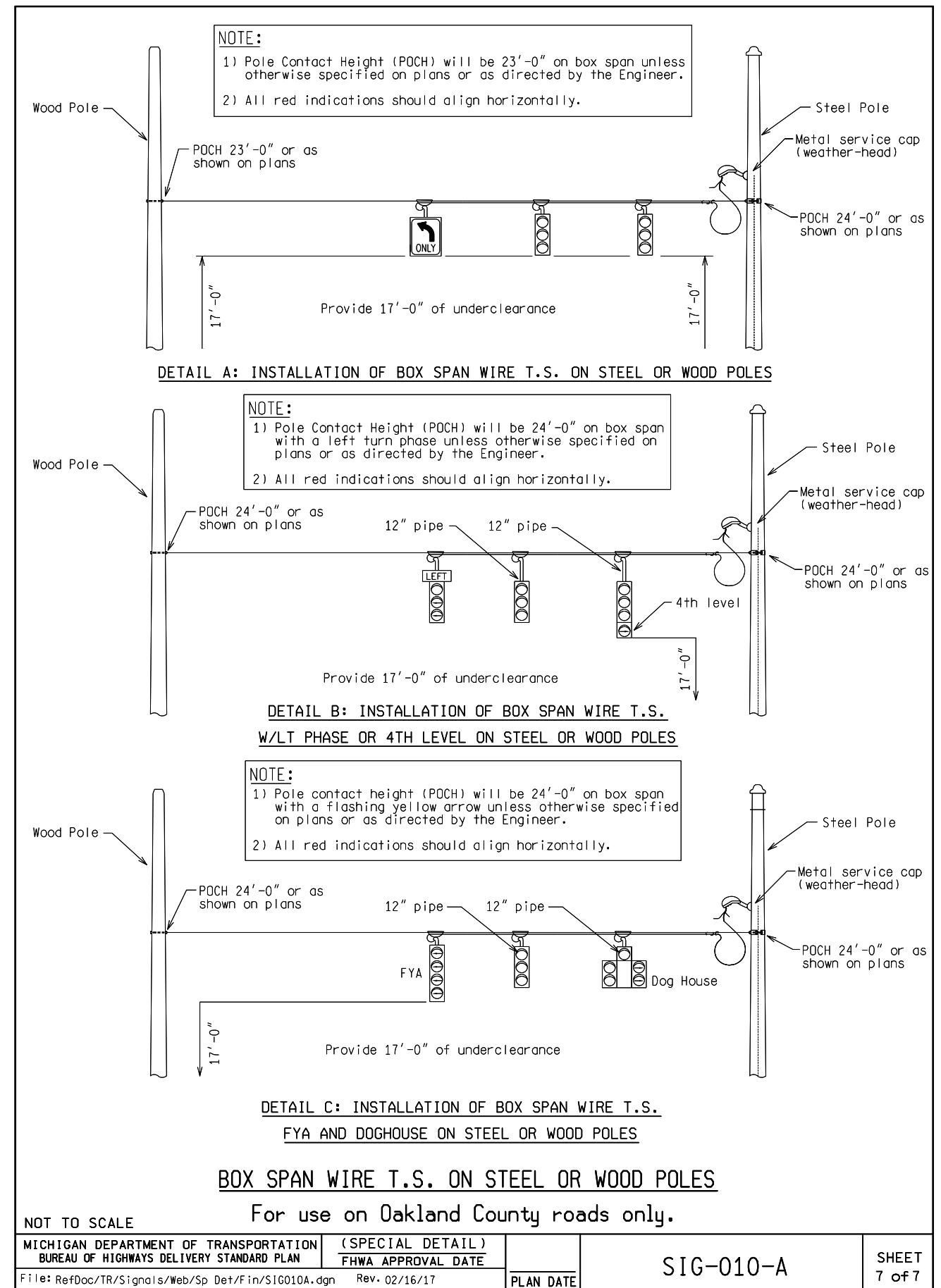


DETAIL COPPER JUMPER (ALTERNATE)
SPAN WIRE GROUNDING

NOT TO SCALE

MICHIGAN DEPARTMENT OF TRANSPORTATION BUREAU OF HIGHWAYS DELIVERY STANDARD PLAN		(SPECIAL DETAIL) FHWA APPROVAL DATE		SIG-010-A	SHEET 6 of 7
File: RefDoc/TR/Signals/Web/Sp Det/Fin/SIG010A.dgn		Rev. 02/16/17	PLAN DATE		

AS-LET PLAN REVISIONS											DATE:	CS:		DRAWING	SHEET
NO.	DATE	AUTH	DESCRIPTION	NO.	DATE	AUTH	DESCRIPTION				DESIGN UNIT:	JN:			
									FILE:	TSC:					



AS-LET PLAN REVISIONS										DATE:	CS:		DRAWING	SHEET
NO.	DATE	AUTH	DESCRIPTION	NO.	DATE	AUTH	DESCRIPTION			DESIGN UNIT:	JN:			
										FILE:	TSC:			