

PLACE THIS SIGN ALONG WITH THE ADVANCE WORK ZONE SIGNING AS DEPICTED ON THE APPROPRIATE TYPICAL M0030a-M0080a.

PLACE ADDITIONAL SUPPLEMENTAL SETS OF SPEED LIMIT SIGNS THROUGHOUT THE WORK AREA AS DEPICTED ON TYPICAL M0090a.

PLACE THROUGHOUT WORK AREA AS INDICATED AND AFTER ALL MAJOR CROSSROADS IF PERMANENT SIGNS ARE NOT IN PLACE.

KEY

- CHANNELIZING DEVICES
- ➔ LIGHTED ARROW PANEL
- ☀ TYPE A WARNING FLASHER (REQUIRED)
- ➔ TRAFFIC FLOW
- ▲ SEE SHEET 3 OF 3
- REFLECTS EXISTING SPEED LIMIT

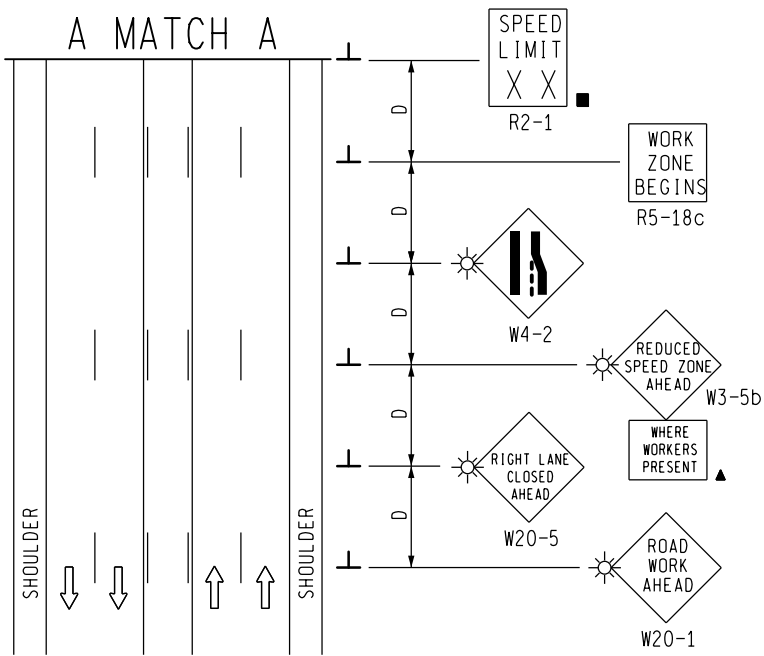
SIGN = 296 f+2 - TYPE B PLUS ADDITIONAL SPEED LIMIT SIGNING THROUGHOUT WORK AREA

A MATCH A

<p>Michigan Department of Transportation</p> <p>TRAFFIC AND SAFETY</p> <p>MAINTAINING TRAFFIC TYPICAL</p>		<p>TYPICAL TEMPORARY TRAFFIC CONTROL FOR CLOSING THREE LANES OF A FIVE-LANE UNDIVIDED ROADWAY USING A REDUCED SPEED LIMIT WHERE WORKERS PRESENT IN ONE DIRECTION ONLY</p>	
<p>DRAWN BY: CON:AE:djf</p> <p>CHECKED BY: BMM:CRB</p> <p>FILE: K:-DGN-TSR-STDS-ENGLISH-MNTTRF-M0510a.dgn</p>	<p>OCTOBER 2011</p> <p>PLAN DATE:</p>	<p>M0510a</p>	<p>SHEET 1 OF 3</p>
<p>NOT TO SCALE</p>		<p>REV. 10/24/2011</p>	

A MATCH A

END ROAD WORK
 PLACE THIS SIGN WITH THE ADVANCE WORK ZONE SIGNING AS DEPICTED ON THE APPROPRIATE TYPICAL M0030a-M0080a.



MDOT
 Michigan Department of Transportation
 TRAFFIC AND SAFETY
 MAINTAINING TRAFFIC
 TYPICAL

TYPICAL TEMPORARY TRAFFIC CONTROL FOR
 CLOSING THREE LANES OF A FIVE-LANE
 UNDIVIDED ROADWAY USING A REDUCED
 SPEED LIMIT WHERE WORKERS PRESENT
 IN ONE DIRECTION ONLY

DRAWN BY: CON:AE:djf
 CHECKED BY: BMM:CRB

OCTOBER 2011
 PLAN DATE:

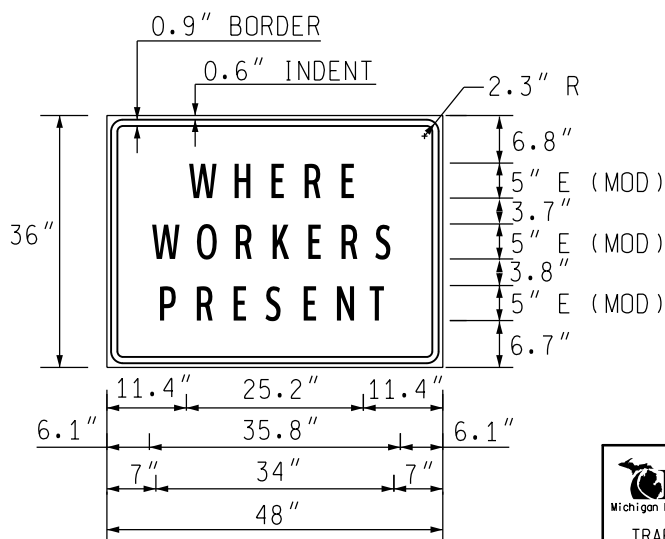
M0510a

SHEET
 2 OF 3

NOT TO SCALE

NOTES

- 1M. D = DISTANCE BETWEEN TRAFFIC CONTROL DEVICES
 1/3 L = MINIMUM LENGTH OF TAPER
 B = LENGTH OF LONGITUDINAL BUFFER
 SEE **M000m** FOR "D," "L," AND "B" VALUES
2. ALL NON-APPLICABLE SIGNING WITHIN THE CIA SHALL BE MODIFIED TO FIT CONDITIONS, COVERED OR REMOVED.
3. DISTANCES BETWEEN SIGNS, THE VALUES FOR WHICH ARE SHOWN IN TABLE D, ARE APPROXIMATE AND MAY NEED ADJUSTING AS DIRECTED BY THE ENGINEER.
- 3A. THE "WORK ZONE BEGINS" (R5-18c) SIGN SHALL BE USED ONLY IN THE INITIAL SIGNING SEQUENCE IN THE WORK ZONE. SUBSEQUENT SEQUENCES IN THE SAME WORK ZONE SHALL OMIT THIS SIGN AND THE QUANTITIES SHALL BE ADJUSTED APPROPRIATELY.
- 4D. THE SPACING OF CHANNELIZING DEVICES SHOULD NOT EXCEED 45 FEET WHEN USED FOR TAPER CHANNELIZATION, AND SHOULD NOT EXCEED 90 FEET WHEN USED FOR TANGENT CHANNELIZATION.
5. FOR OVERNIGHT CLOSURES, TYPE III BARRICADES SHALL BE LIGHTED.
6. THE TYPE A WARNING FLASHER SHOWN ON THE WARNING SIGNS SHALL BE POSITIONED ON THE SIDE OF THE SIGN NEAREST THE ROADWAY.
7. ALL TEMPORARY SIGNS, TYPE III BARRICADES, THEIR SUPPORT SYSTEMS AND LIGHTING REQUIREMENTS SHALL MEET NCHRP 350 CRASHWORTHLY REQUIREMENTS STIPULATED IN THE CURRENT EDITION OF THE MICHIGAN MANUAL ON UNIFORM TRAFFIC CONTROL DEVICES, THE CURRENT EDITION OF THE STANDARD SPECIFICATIONS FOR CONSTRUCTION, THE STANDARD PLANS AND APPLICABLE SPECIAL PROVISIONS. ONLY DESIGNS AND MATERIALS APPROVED BY MDOT WILL BE ALLOWED.
8. WHEN BUFFER AREAS ARE ESTABLISHED, THERE SHALL BE NO EQUIPMENT OR MATERIALS STORED OR WORK CONDUCTED IN THE BUFFER AREA.
21. ALL EXISTING PAVEMENT MARKINGS WHICH ARE IN CONFLICT WITH EITHER PROPOSED CHANGES IN TRAFFIC PATTERNS OR PROPOSED TEMPORARY TRAFFIC MARKINGS, SHALL BE REMOVED BEFORE ANY CHANGE IS MADE IN THE TRAFFIC PATTERN. EXCEPTION WILL BE MADE FOR DAYTIME-ONLY TRAFFIC PATTERNS THAT ARE ADEQUATELY DELINEATED BY OTHER TRAFFIC CONTROL DEVICES.
- 26C. THE LIGHTED ARROW PANEL SHALL BE LOCATED AT THE BEGINNING OF THE MERGING TAPER AS SHOWN. WHEN PHYSICAL LIMITATIONS RESTRICT ITS PLACEMENT AS INDICATED, THEN IT SHALL BE PLACED AS CLOSE TO THE BEGINNING OF THE MERGING TAPER AS POSSIBLE.
- 29D. THE TYPE OF REFLECTIVE SHEETING USED FOR THE "WHERE WORKERS PRESENT" PLAQUE SHALL BE THE SAME AS THE TYPE USED FOR THE PARENT SIGN.




SIGN SIZES

DIAMOND WARNING	- 48" x 48"
W1-6 WARNING	- 48" x 24"
"WORKERS PRESENT" PLAQUE	- 48" x 36"
RECTANGULAR REGULATORY	- 48" x 60"
R5-18c REGULATORY	- 48" x 48"

COLORS

LEGEND AND BORDER - BLACK (NON-REFLECTORIZED)
 BACKGROUND - ORANGE (REFLECTORIZED)

NOT TO SCALE

 TRAFFIC AND SAFETY MAINTAINING TRAFFIC TYPICAL	TYPICAL TEMPORARY TRAFFIC CONTROL FOR CLOSING THREE LANES OF A FIVE-LANE UNDIVIDED ROADWAY USING A REDUCED SPEED LIMIT WHERE WORKERS PRESENT IN ONE DIRECTION ONLY	
	DRAWN BY: CON:AE:djf	OCTOBER 2011
CHECKED BY: BMM:CRB	PLAN DATE:	SHEET 3 OF 3
FILE: K:\-DGN-TSR-STDS-ENGLISH-MNTTRF-M0510a.dgn		REV. 10/24/2011