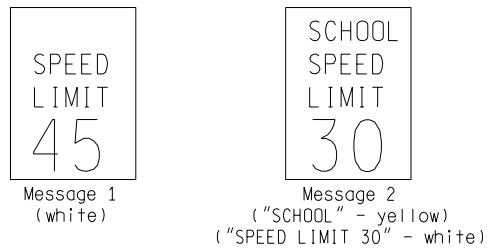


**NOTES:**

- 1) "SCHOOL SPEED LIMIT" shall be formed by rows of .068" dia. fiber optic bundles spaced at 1/2" O.C. (normal). "45" and "30" shall be 0.90" dia. fiber optic bundle spaced at 5/8" O.C. (normal).
- 2) Message displays and colors:



- 3) Message shall completely blank out when not energized.
- 4) Phase dimmer shall provide a means of manual adjustment for nighttime dimming. Dimming shall be activated by the photocell.
- 5) Sign housing shall be pre-drilled for power entry through top mounting hub.
- 6) Sign shall be equipped with four (4) 3/16" dia. weep holes located in the lower corners of the housing.
- 7) Exterior of housing assembly shall be painted semi-gloss black.
- 8) Approximate weight of sign assembled - 120 lbs.

NOT TO SCALE

File: PW:RD/TR/Signals/WC SD/Final

Rev. 10/21/14



ENGINEER OF DELIVERY

MICHIGAN DEPARTMENT OF TRANSPORTATION  
BUREAU OF HIGHWAYS DELIVERY STANDARD PLAN FOR  
**FIBER OPTIC VARIABLE  
SPEED LIMIT SIGN**

PREPARED BY  
TRAFFIC AND SAFETY

ENGINEER OF DEVELOPMENT

WC-031-A

DRAWN BY: DJF

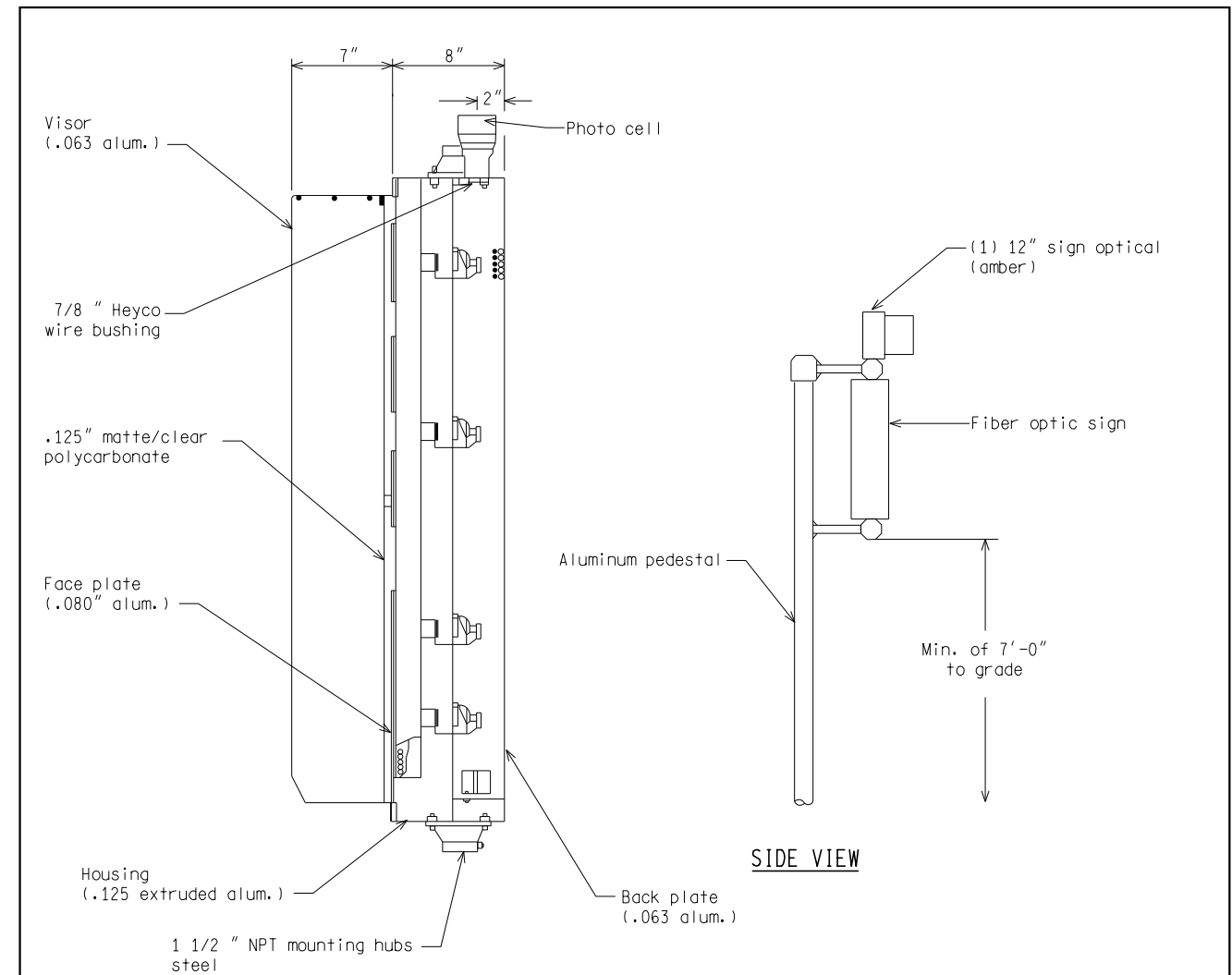
(SPECIAL DETAIL)

SHEET  
1 of 2

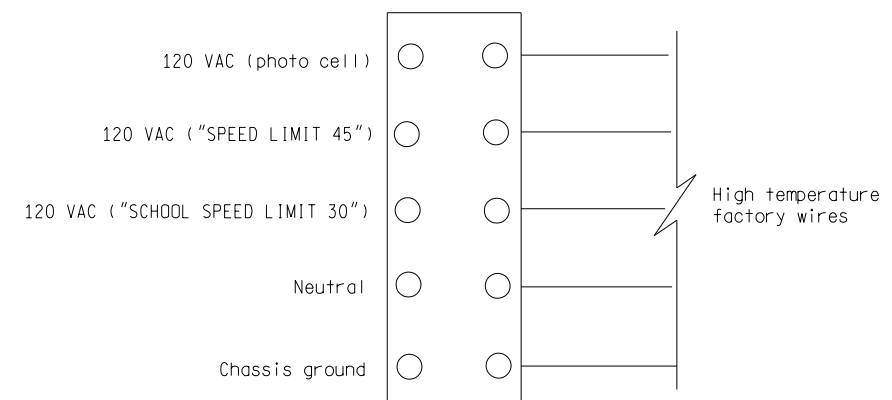
CHECKED BY:

FHWA APPROVAL DATE

PLAN DATE



**FIBER OPTIC VARIABLE SPEED LIMIT SIGN**



**TERMINAL STRIP CONNECTION**

NOT TO SCALE

MICHIGAN DEPARTMENT OF TRANSPORTATION  
BUREAU OF HIGHWAYS DELIVERY STANDARD PLAN

(SPECIAL DETAIL)  
FHWA APPROVAL DATE

File: PW:RD/TR/Signals/WC SD/Final

Rev. 10/21/14

PLAN DATE

WC-031-A

SHEET  
2 of 2

AS-LET PLAN REVISIONS

NO.	DATE	AUTH	DESCRIPTION	NO.	DATE	AUTH	DESCRIPTION



FILE:

DATE:

DESIGN UNIT:

TSC:

CS:

JN:

DRAWING SHEET