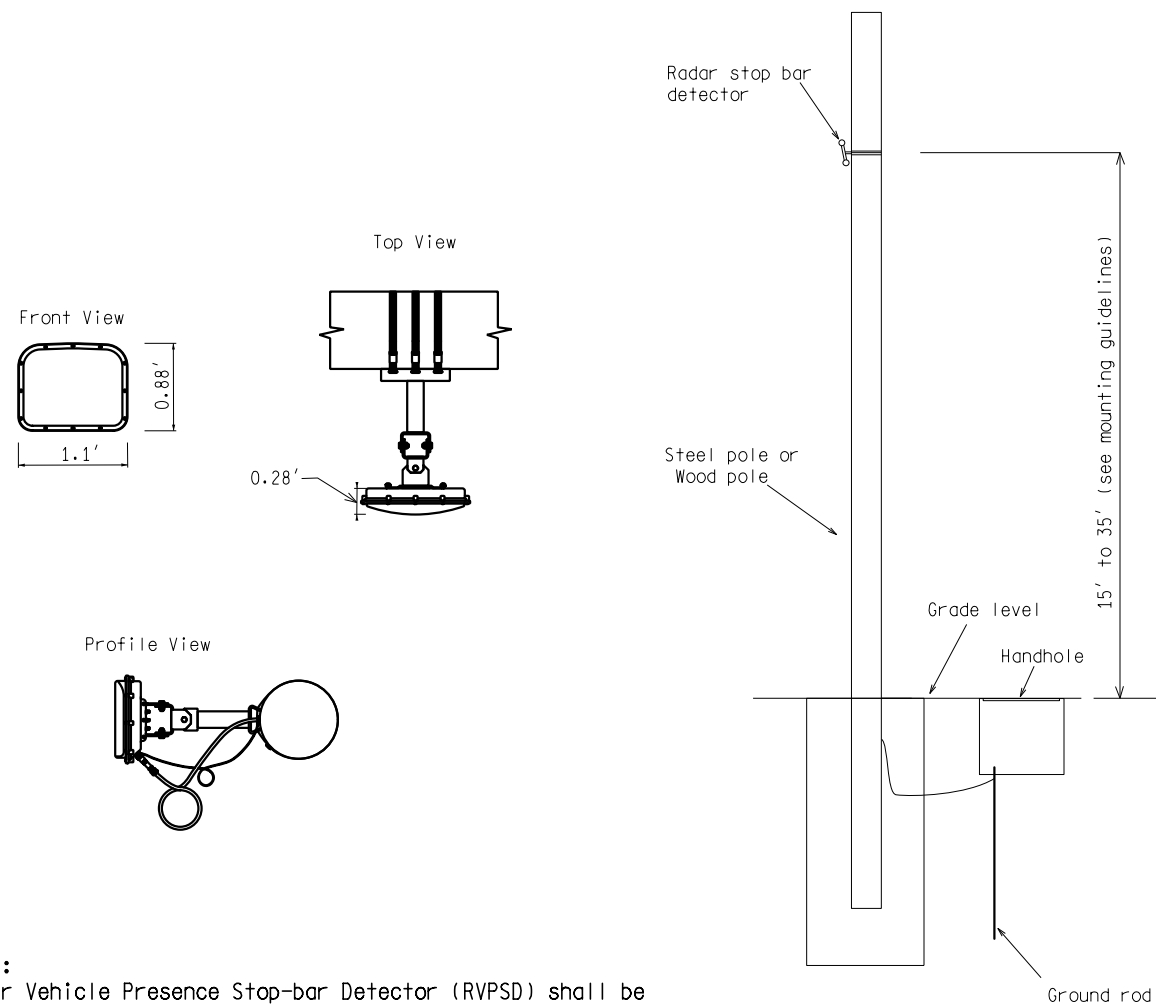


RADAR VEHICLE PRESENCE
STOP-BAR DETECTOR



Note:
Radar Vehicle Presence Stop-bar Detector (RVPSD) shall be installed and configured in coordination with agency and/or manufacturer representative.

NOT TO SCALE

File: RefDoc/TR/Signals/Web/Sp Det/Fin/SIG460A.dgn Rev.



PREPARED BY
TRAFFIC AND SAFETY

DRAWN BY: DSP

CHECKED BY:

ENGINEER OF DELIVERY

ENGINEER OF DEVELOPMENT

(SPECIAL DETAIL)
FHWA APPROVAL DATE

MICHIGAN DEPARTMENT OF TRANSPORTATION
BUREAU OF HIGHWAYS DELIVERY STANDARD PLAN FOR

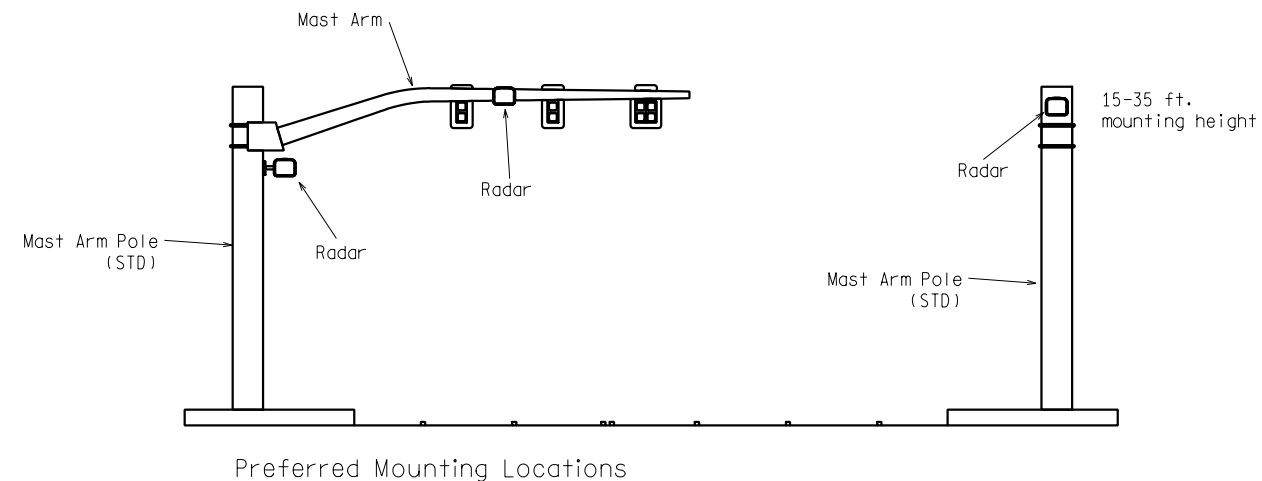
**RADAR STOP BAR
DETECTION**

02/16/17
PLAN DATE

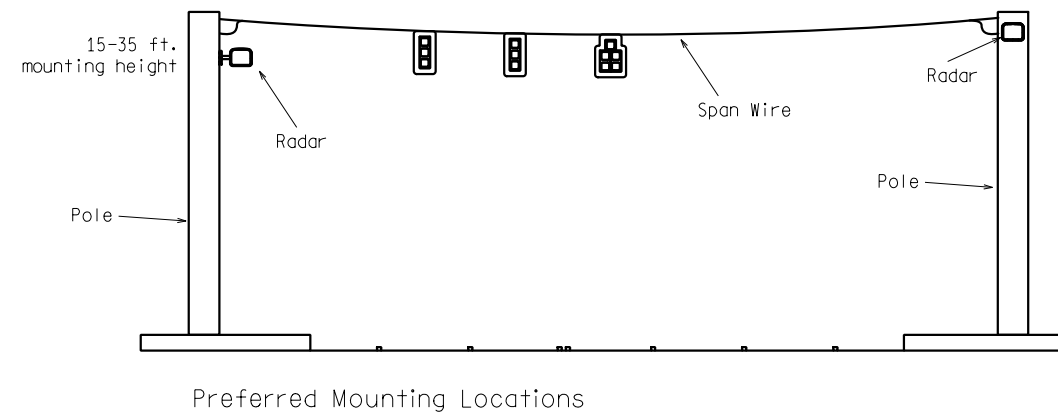
SIG-460-A

SHEET
1 of 2

RADAR VEHICLE PRESENCE STOP-BAR DETECTOR
MAST ARM INSTALLATION DETAIL



RADAR VEHICLE PRESENCE STOP-BAR DETECTOR
SPAN WIRE INSTALLATION DETAIL



NOT TO SCALE

MICHIGAN DEPARTMENT OF TRANSPORTATION
BUREAU OF HIGHWAYS DELIVERY STANDARD PLAN

(SPECIAL DETAIL)
FHWA APPROVAL DATE

File: RefDoc/TR/Signals/Web/Sp Det/Fin/SIG460A.dgn Rev.

02/16/17
PLAN DATE

SIG-460-A

SHEET
2 of 2

AS-LET PLAN REVISIONS

NO.	DATE	AUTH	DESCRIPTION	NO.	DATE	AUTH	DESCRIPTION



FILE:

DATE:

DESIGN UNIT:

TSC:

CS:

JN:

DRAWING SHEET