

KEY

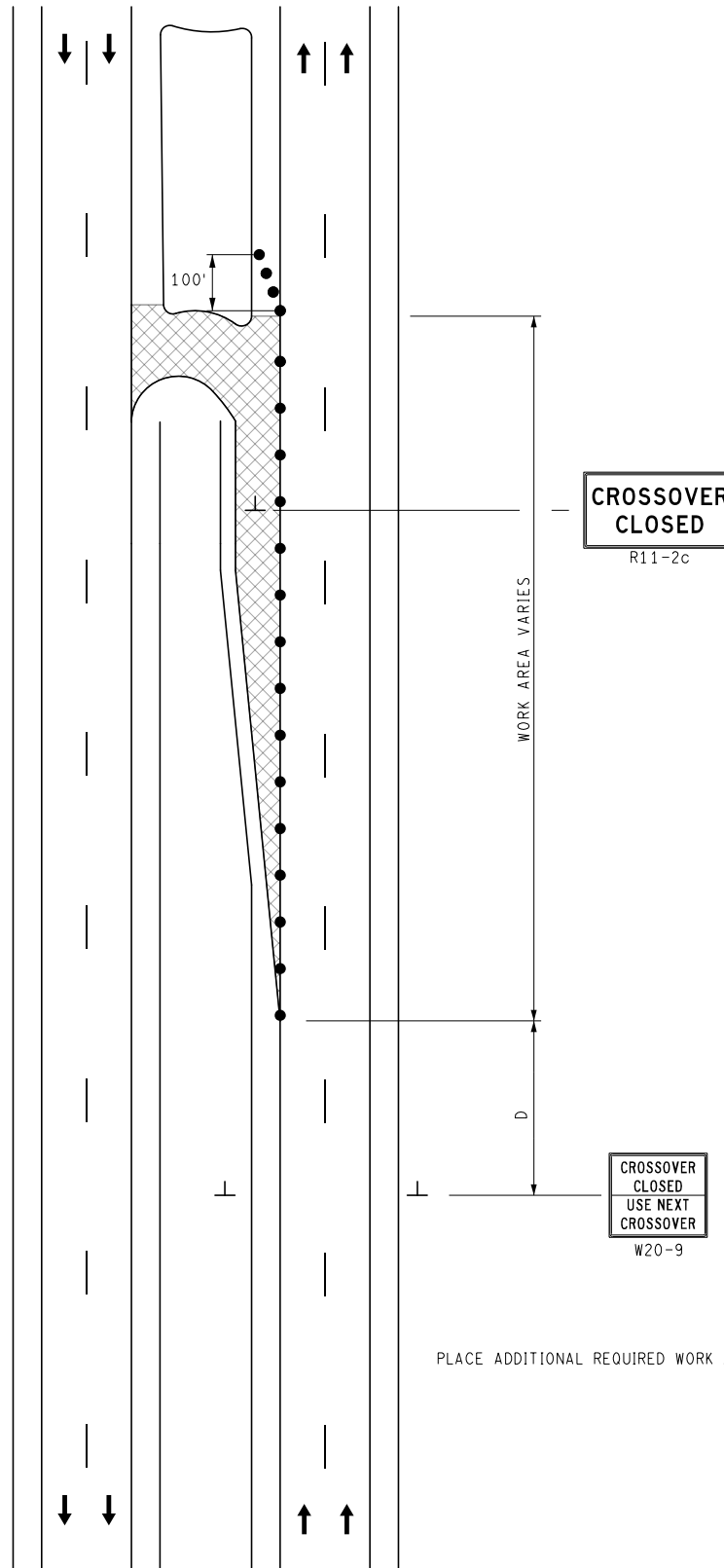
••• CHANNELIZING DEVICES

← TRAFFIC FLOW

STANDARD NOTES

(SEE 102-GEN-NOTES)

GENERAL: G1, G2, G3  
 SIGNING: S1, S2, S3, S5  
 DEVICES: TCD1, TCD2



**CROSSOVER  
CLOSED**  
R11-2c

**CROSSOVER  
CLOSED  
USE NEXT  
CROSSOVER**  
W20-9

PLACE ADDITIONAL REQUIRED WORK ZONE SIGNS



NOT TO SCALE

MAINTAINING TRAFFIC TYPICAL

NO: 310-SP-CROSS-C-NFW

**CROSSOVER CLOSURE  
ON A DIVIDED ROADWAY**

DATE: MAY 2021  
 SHEET:

1 OF 1