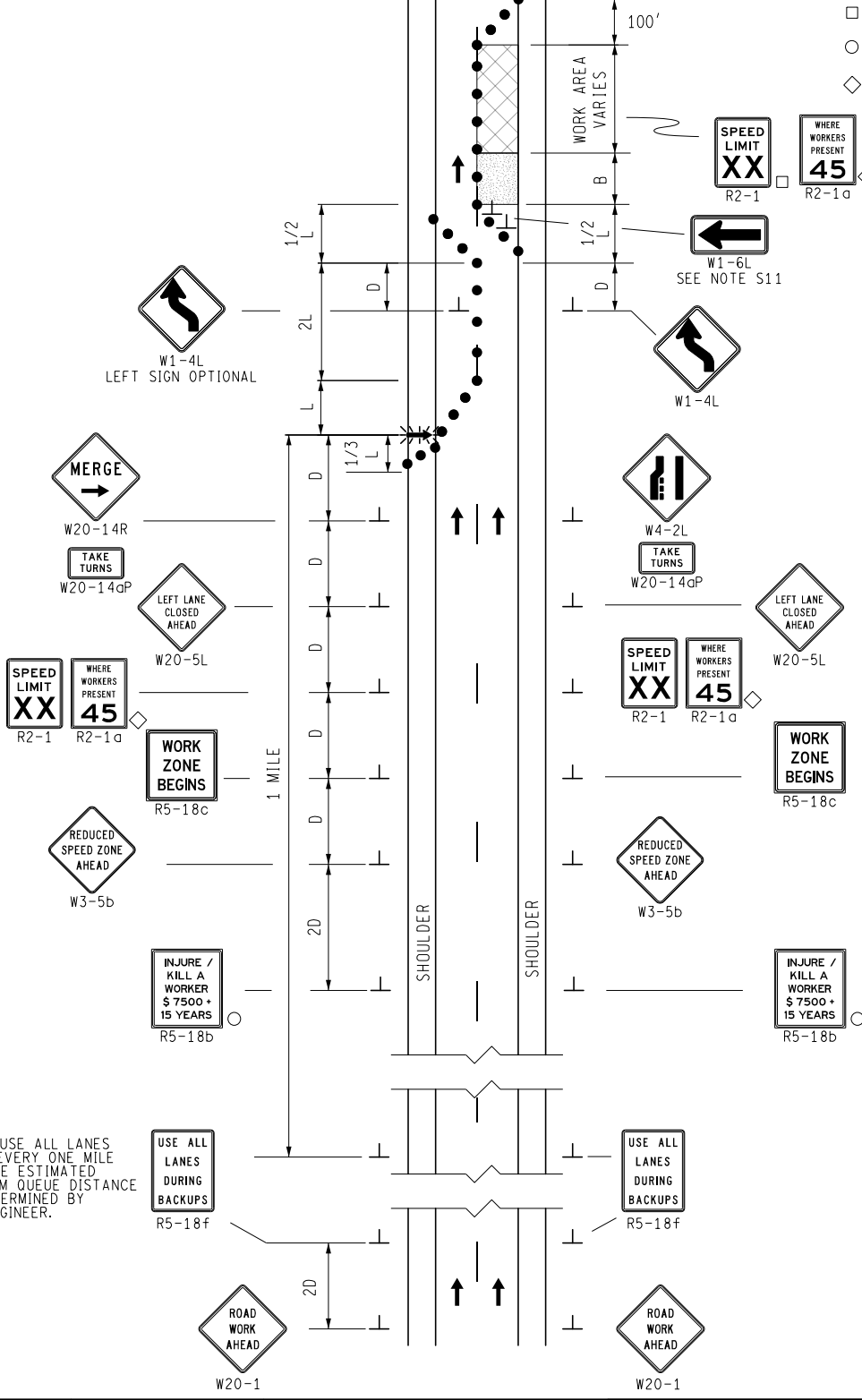


KEY

- CHANNELIZING DEVICES
- ⚡ LIGHTED ARROW PANEL
- ← TRAFFIC FLOW
- REFLECTS EXISTING SPEED LIMIT
- PLACE SIGN AS INDICATED IN NOTE S5
- PLACE SIGN AS INDICATED IN NOTE S2
- ◇ R2-1a OPTIONAL

STANDARD NOTES
(SEE 102-GEN-NOTES)

GENERAL: G1, G2, G3, G4
SIGNING: S1, S2, S3, S5, S6, S8, S11
DEVICES: TCD1, TCD2, TCD6



PLACE USE ALL LANES SIGNS EVERY ONE MILE FOR THE ESTIMATED MAXIMUM QUEUE DISTANCE AS DETERMINED BY THE ENGINEER.

	NOT TO SCALE	MAINTAINING TRAFFIC TYPICAL	SINGLE LEFT LANE CLOSURE WITH SHIFT AND ZIPPER MERGE ON A 2-LANE FREEWAY	DATE: JUNE 2021
		NO: 342-SP-ZIP-1LC-(L)-SHIFT		SHEET:
FILE: 342-SP-ZIP-1LC-(L)-SHIFT.dgn			1 OF 1	