

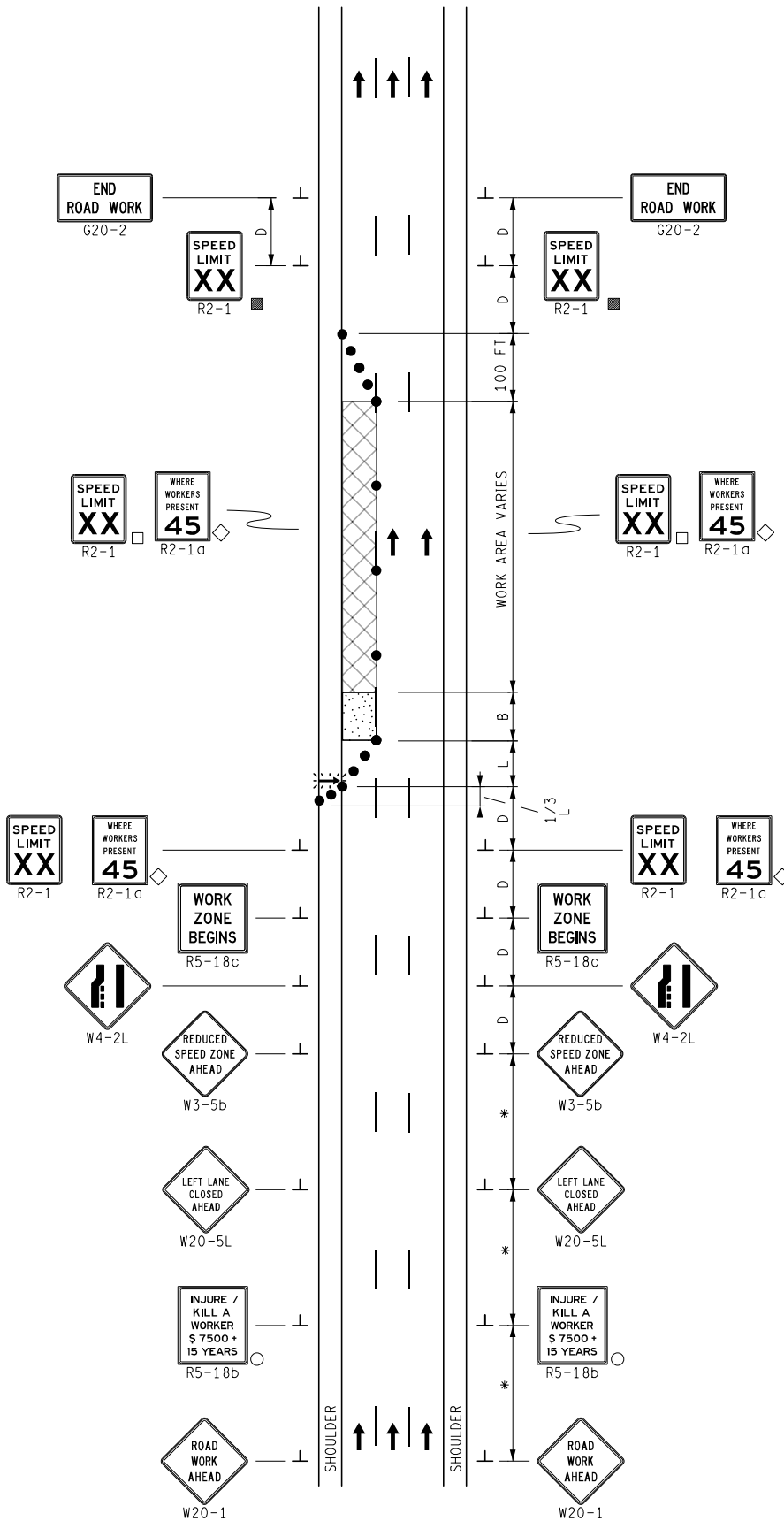
KEY

- CHANNELIZING DEVICES
- ⚡ LIGHTED ARROW PANEL
- ← TRAFFIC FLOW
- REFLECTS EXISTING SPEED LIMIT
- PLACE SIGN AS INDICATED IN NOTE S2
- ◇ R2-1a OPTIONAL
- * PLACE SIGN AT A SPACING OF D ON DIVIDED ROADWAYS AND 2D ON FREEWAYS

STANDARD NOTES

(SEE 102-GEN-NOTES)

GENERAL: G1, G2, G3, G4
 SIGNING: S1, S2, S3, S5, S8
 DEVICES: TCD1, TCD2, TCD6



NOT TO SCALE

MAINTAINING TRAFFIC TYPICAL

NO: 204-FW-1LC-(L)

SINGLE LEFT LANE CLOSURE
 ON A FREEWAY
 OR DIVIDED ROADWAY

DATE: MAY 2021
 SHEET: