








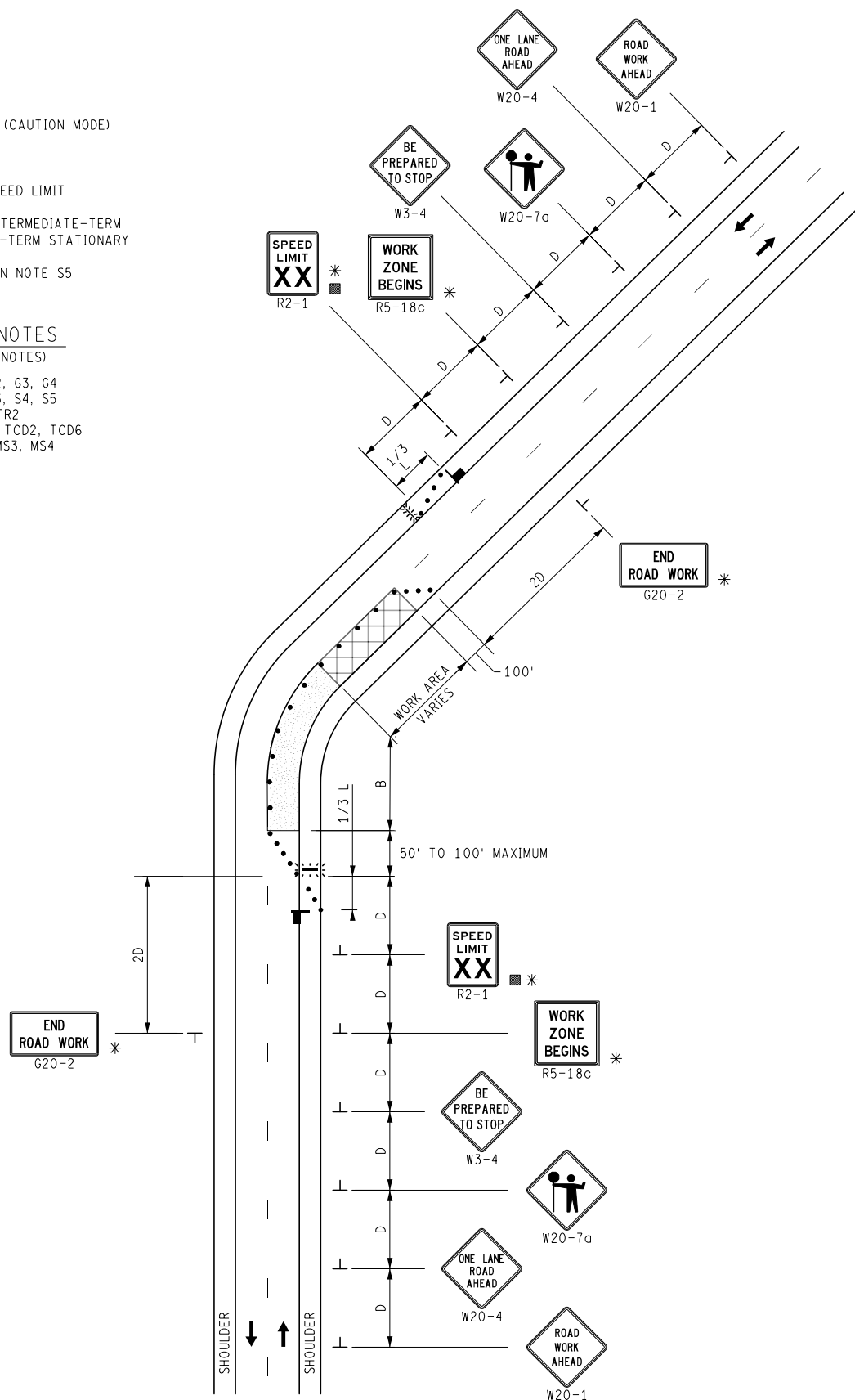
KEY

-  TRAFFIC REGULATOR
-  CHANNELIZING DEVICES
-  LIGHTED ARROW PANEL (CAUTION MODE)
-  TRAFFIC FLOW
-  REFLECTS EXISTING SPEED LIMIT
-  * ONLY REQUIRED FOR INTERMEDIATE-TERM STATIONARY AND LONG-TERM STATIONARY
-  □ PLACE AS INDICATED IN NOTE 55


STANDARD NOTES

(SEE 102-GEN-NOTES)

GENERAL: G1, G2, G3, G4
 SIGNING: S1, S3, S4, S5
 TRAF REG: TR1, TR2
 DEVICES: TCD1, TCD2, TCD6
 MAINT & SURV: MS2, MS3, MS4



NOT TO SCALE

 Michigan Department of Transportation	MAINTENANCE MAINTAINING TRAFFIC TYPICAL	DURATION: LONG-TERM STATIONARY INTERMEDIATE-TERM STATIONARY SHORT-TERM STATIONARY	LANE CLOSURE FOR A TWO-LANE, TWO-WAY ROADWAY UTILIZING TRAFFIC REGULATORS NO SPEED REDUCTION	DATE: MAY 2021 NO: 4110A- M-TR-NFW-2L SHEET: 1 OF 1
	FILE: 4110A-M-TR-NFW-2L.dgn			