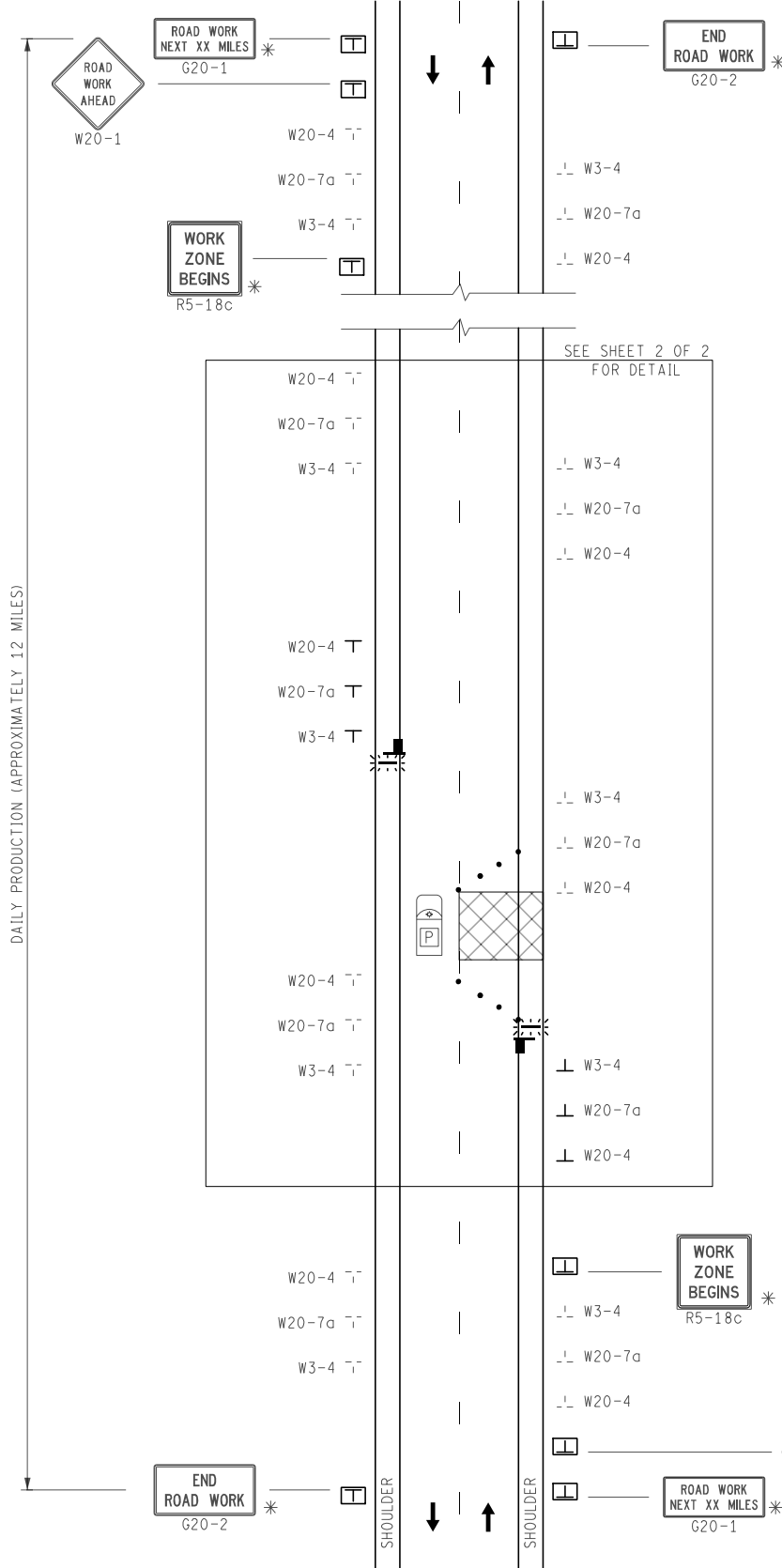


# KEY

- CHANNELIZING DEVICES
- ⚡ LIGHTED ARROW PANEL (CAUTION MODE)
- ← TRAFFIC FLOW
- ▬ TRAFFIC REGULATOR
- ☑ PILOT CAR
- ⊥ SIGN (FACE VISIBLE TO TRAFFIC)
- ⊥ SIGN (FUTURE/PAST LOCATION OR FACE DOWN WITH LEGS FOLDED)
- ▭ SIGN (STATIONARY FOR LENGTH OF PROJECT - DOES NOT "LEAP")
- \* SIGN OPTIONAL



# NOTES

A SERIES OF SIGNS AT EACH FLAGGING LOCATION INCLUDES W20-4, W20-7a, AND W3-4:



THREE (3) SERIES OF SIGNS ARE REQUIRED FOR EACH DIRECTION OF TRAVEL.

TWO (2) SERIES OF SIGNS ARE ALLOWED TO BE VISIBLE AT ONE TIME IN EACH DIRECTION.

NO MORE THAN FOUR (4) MILES FROM ROAD WORK AHEAD SIGN TO OPERATION IS PERMITTED AT ANY TIME.

WHEN OPERATION (PROGRESSING TOWARD THE TRAFFIC REGULATOR) MOVES WITHIN 500 FEET OF THE REGULATOR, THE FLAGGING STATION MUST BE MOVED TO THE NEXT STATION BY POSITIONING A SECOND TRAFFIC REGULATOR AT THE NEW STATION.

WHEN OPERATION (MOVING AWAY FROM THE TRAFFIC REGULATOR) PASSES THE ADJACENT FLAGGING STATION, THE FLAGGING STATION MUST BE MOVED AND THE PILOT CAR WILL HOLD TRAFFIC UNTIL THE TRAFFIC REGULATOR IS SET AT THE NEW STATION.

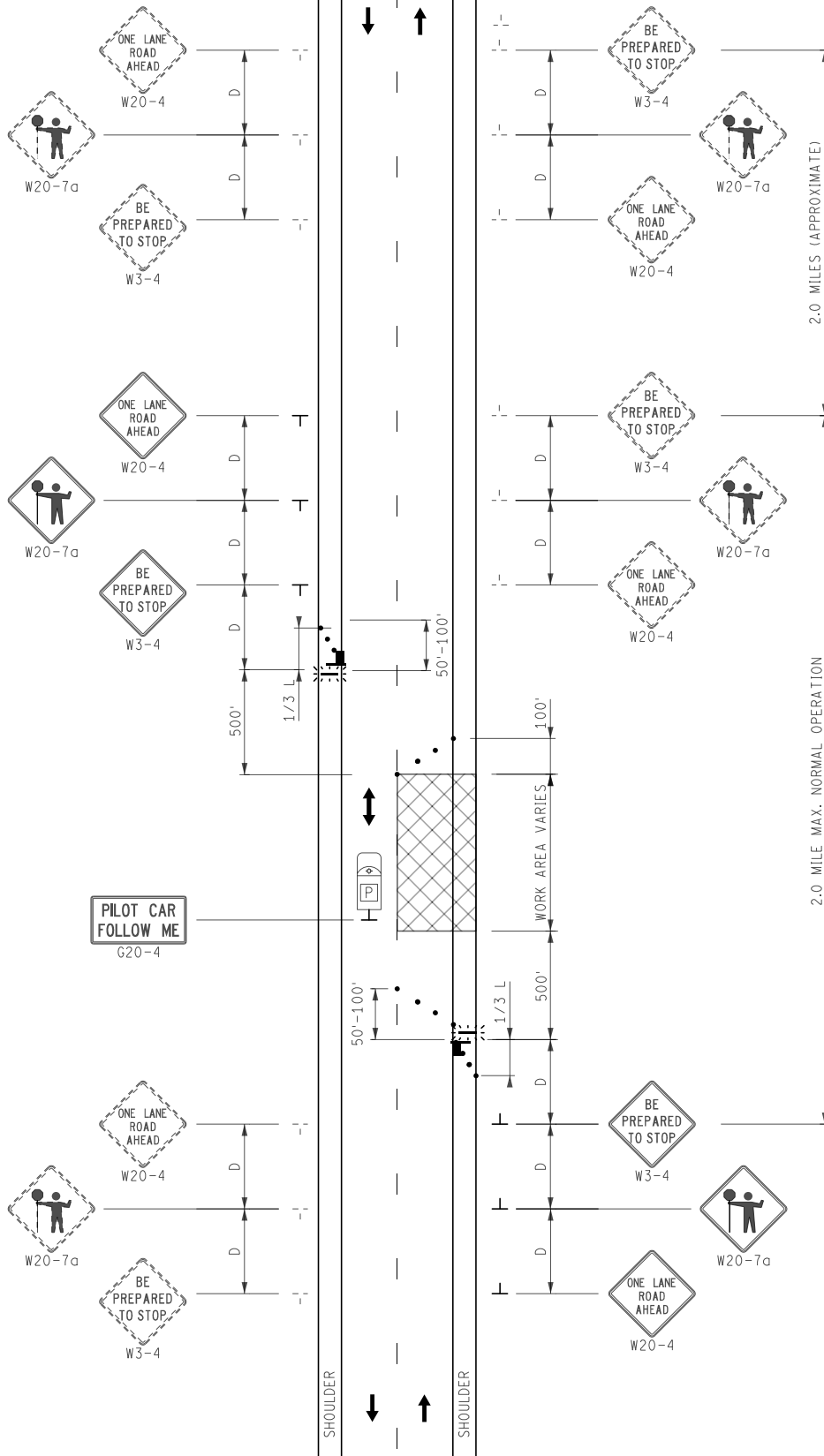
TRAFFIC REGULATOR MUST REMAIN WITH LIGHTED ARROW PANEL AT ALL TIMES.

## STANDARD NOTES (SEE 102-GEN-NOTES)

- GENERAL: G1, G2, G3, G4
- SIGNING: S1, S2, S3, S4, S5
- TRAF REG: TR1, TR2
- DEVICES: TCD1, TCD2, TCD6
- MAINT & SURV: MS2, MS3, MS4, MS5

NOT TO SCALE

	MAINTENANCE MAINTAINING TRAFFIC TYPICAL	DURATION:  MOBILE SHORT DURATION SHORT-TERM STATIONARY	LEAP FROG LANE CLOSURE ON A TWO-LANE, TWO-WAY ROADWAY	DATE: MAY 2021
	FILE: 4180-M-TR-NFW-2L.dgn			NO: 4180- M-TR-NFW-2L
				SHEET: 1 OF 2



NOT TO SCALE

	MAINTENANCE MAINTAINING TRAFFIC TYPICAL	DURATION:  MOBILE SHORT DURATION SHORT-TERM STATIONARY	<b>LEAP FROG LANE CLOSURE          ON A TWO-LANE, TWO-WAY ROADWAY</b>		DATE: MAY 2021
			FILE: 4180-M-TR-NFW-2L.dgn	NO: 4180- M-TR-NFW-2L	SHEET: 2 OF 2