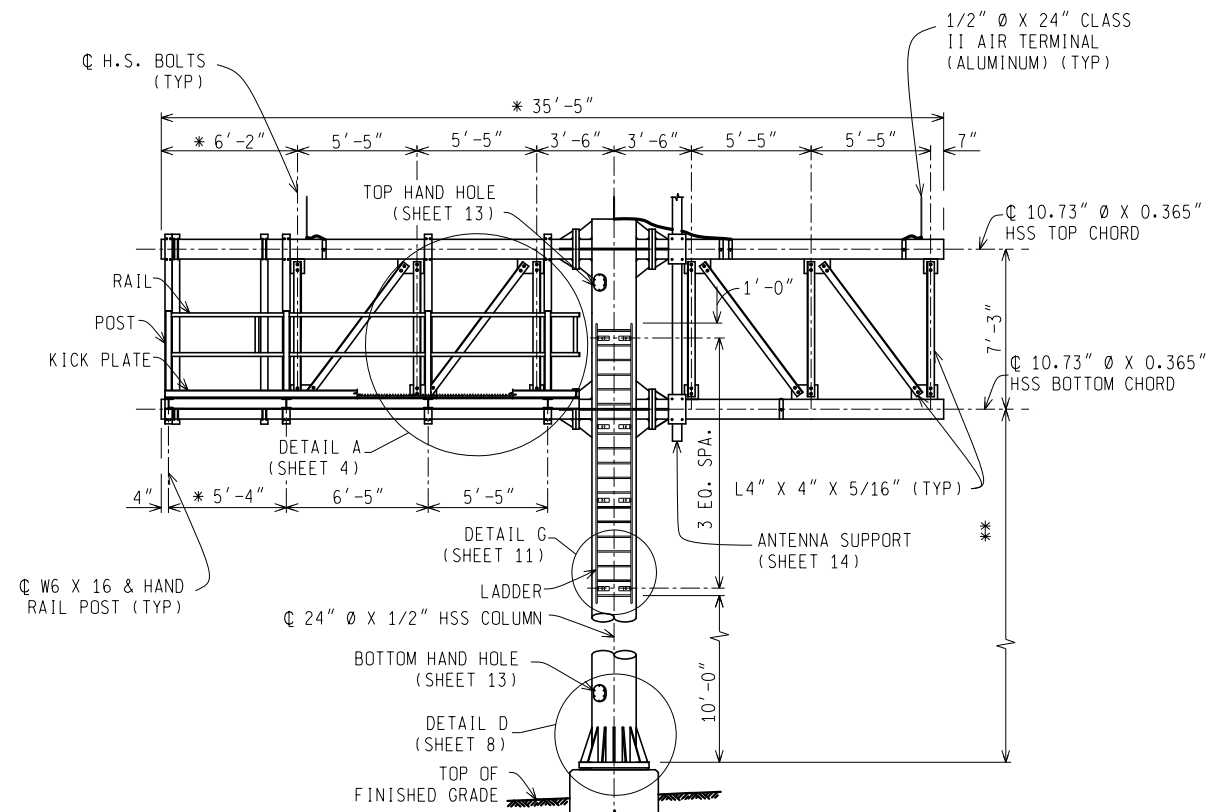


PLAN

\* CONTRACTOR TO VERIFY DIMENSION CONFORMS TO DMS CABINET.



ELEVATION

OUTLINE OF DMS CABINET NOT SHOWN FOR CLARITY.  
 \* CONTRACTOR TO VERIFY DIMENSION CONFORMS TO DMS CABINET.  
 \*\* SEE CONTRACT PLANS FOR HEIGHT (32'-0" MAXIMUM).

NOTES:

1. THE DESIGN OF THIS STRUCTURE IS BASED ON THE AASHTO STANDARD SPECIFICATIONS FOR STRUCTURAL SUPPORTS FOR HIGHWAY SIGNS, LUMINARIES, AND TRAFFIC SIGNALS, 4TH EDITION 2001 WITH INTERIMS THROUGH 2003.
2. THE DESIGN OF THE CONNECTION OF THE DMS CABINET MOUNTING POSTS TO TRUSS CHORDS MUST BE SUBMITTED FOR APPROVAL.
3. MAXIMUM SIGN AREA IS 285 SQUARE FEET.
4. PROVIDE 15/16 DIAMETER HOLES FOR 7/8 DIAMETER HIGH STRENGTH (H.S.) BOLTS FOR ALL CONNECTIONS UNLESS OTHERWISE STATED.
5. CONTRACTOR TO ORIENT THE L4" X 4" X 5/16" DIAGONAL AND VERTICAL BRACING PER FABRICATORS RECOMMENDATION. ALL BRACING ON THE STRUCTURE TO BE AT THE SAME ORIENTATION.
6. IF ANTENNA SUPPORT POLE IS REQUIRED, PROVIDE AIR TERMINAL, DOWN CONDUCTOR, AND MOUNTING STRAPS IN ADDITION TO LIGHTNING PROTECTION (LP) EQUIPMENT TO BE SUPPLIED FOR THE DMS CASE. THE TOP OF THE ANTENNA SUPPORT MUST BE SEALED WITH A TENON. CONTRACTOR TO VERIFY WITH ENGINEER METHOD TO ROUTE THE WIRE TO THE INTERIOR OF THE ANTENNA SUPPORT SUCH THAT A WATER TIGHT SEAL IS MAINTAINED.
7. INSTALL FLEXIBLE CONDUITS IN THE DMS SUPPORT STRUCTURE CENTER COLUMN TO SEPARATE POWER AND COMMUNICATIONS CABLING.
8. INSTALL RODENT SCREEN BETWEEN THE BASE PLATE (R) AND TOP OF FOUNDATION.
9. S.S. DENOTES STAINLESS STEEL. EQ. DENOTES EQUAL. SPA. DENOTES SPACED. W/ DENOTES WITH.

NOT TO SCALE

File: External Partnerships/ITS Program Office/ITS Standard Details/DMS Structure/ITS-031-A RH Master DMS Structure.dgn



PREPARED BY  
DESIGN DIVISION

DRAWN BY:  
CHECKED BY:

ENGINEER OF DELIVERY  
  
ENGINEER OF DEVELOPMENT  
(SPECIAL DETAIL)  
FHWA APPROVAL DATE

MICHIGAN DEPARTMENT OF TRANSPORTATION  
BUREAU OF DEVELOPMENT STANDARD PLAN FOR

RH MASTER  
DMS STRUCTURE

02/06/20  
PLAN DATE

ITS-031-A

SHEET  
1 of 16

NOT TO SCALE

File: External Partnerships/ITS Program Office/ITS Standard Details/DMS Structure/ITS-030-A RH Master DMS Structure.dgn

MICHIGAN DEPARTMENT OF TRANSPORTATION  
BUREAU OF DEVELOPMENT STANDARD PLAN

(SPECIAL DETAIL)  
FHWA APPROVAL DATE

02/06/20  
PLAN DATE

ITS-031-A

SHEET  
2 of 16

FINAL ROW PLAN REVISIONS (SUBMITTAL DATE: )							
NO.	DATE	AUTH	DESCRIPTION	NO.	DATE	AUTH	DESCRIPTION



NO SCALE

PRINT DATE: 02/14/2020  
FILE:

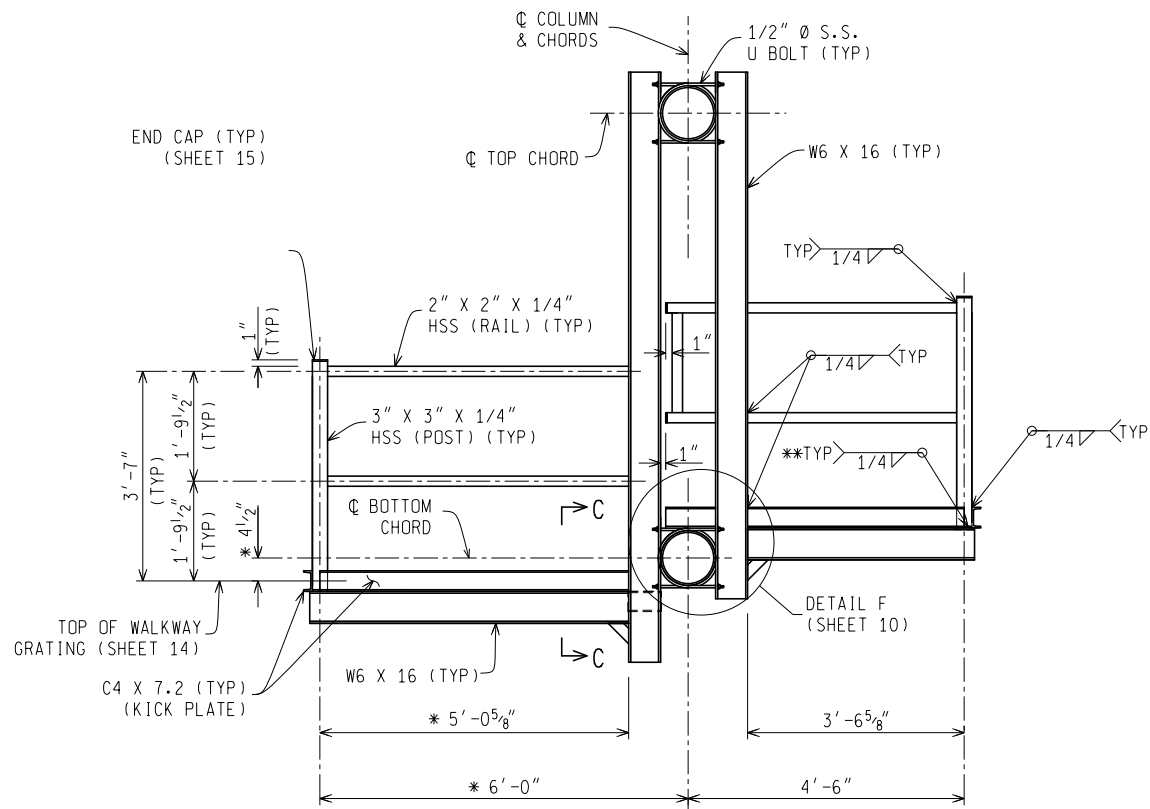
DATE:  
DESIGN UNIT:  
TSC:

CS:  
JN:

RH Master DMS Structure

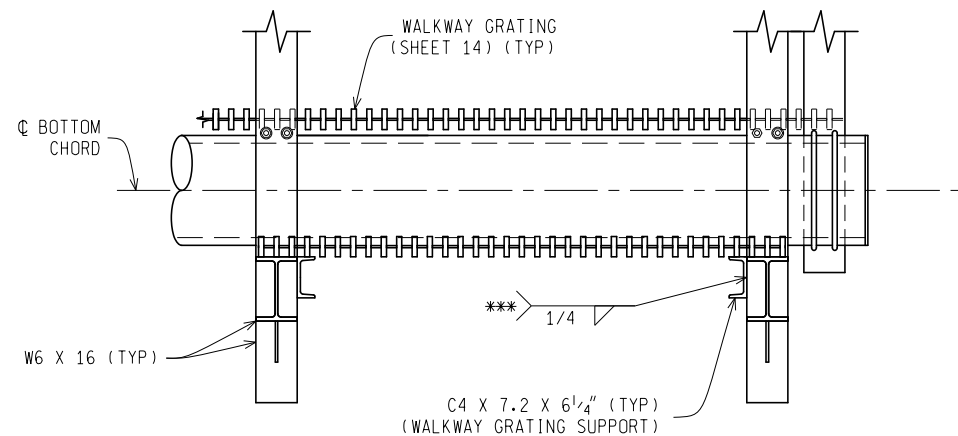
SHEET 1 OF 8

DRAWING SHEET  
SECT



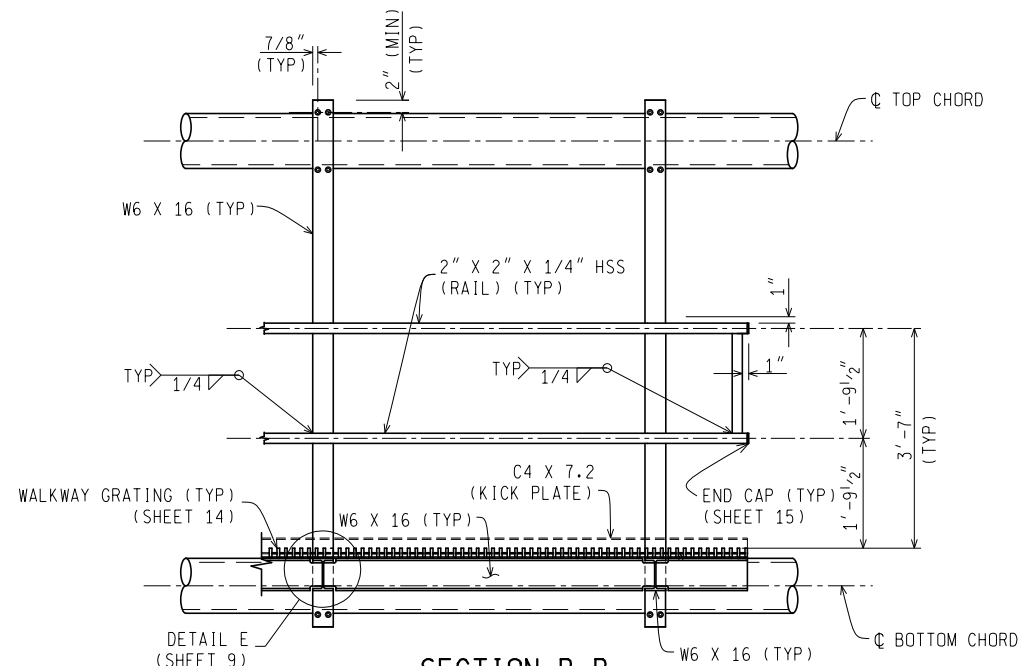
**SECTION A-A**

OUTLINE OF DMS CABINET AND COLUMN NOT SHOWN FOR CLARITY.  
DO NOT PLACE DMS CABINET ON PLATFORM.  
\* CONTRACTOR TO VERIFY DIMENSION CONFORMS TO DMS CABINET.  
\*\* WELD 3" X 3" X 1/4" HSS (POST) TO W6 X 16



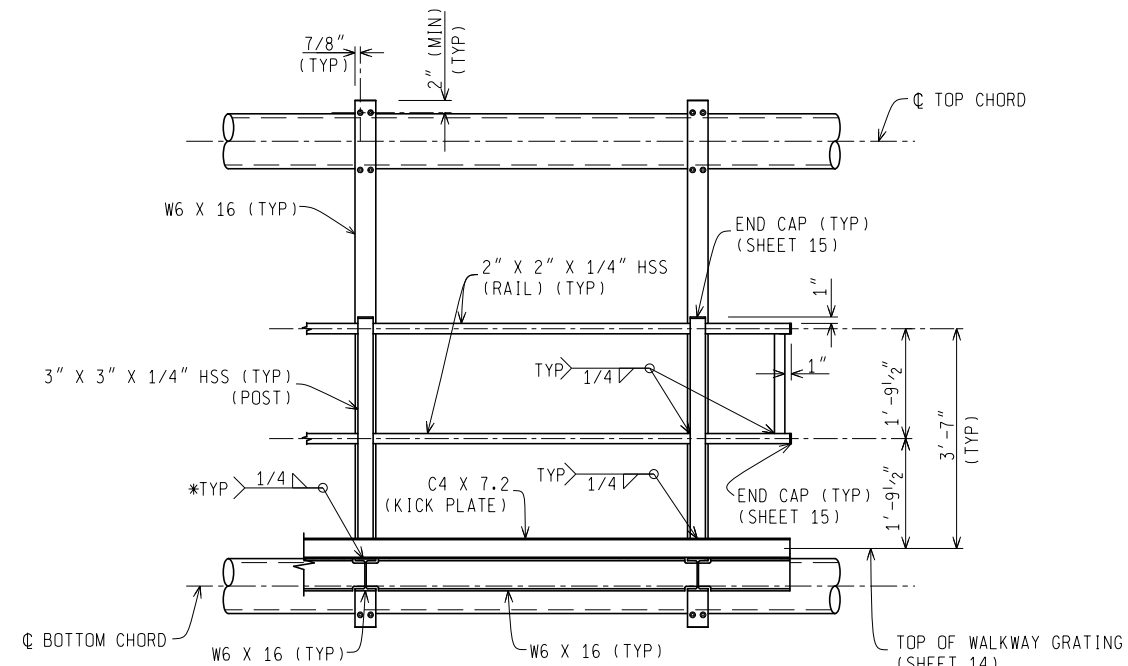
**SECTION C-C**

\*\*\* C4 X 7.2 X 6 1/4" WELDED TO VERTICAL W6 X 16 MEMBERS. (BOTH ENDS OF GRATING)



**SECTION B-B**

COLUMN AND TRUSS WEB ANGLES NOT SHOWN FOR CLARITY.



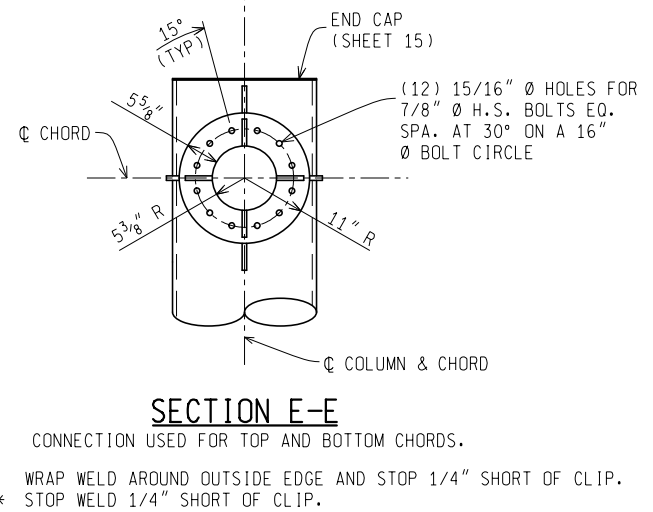
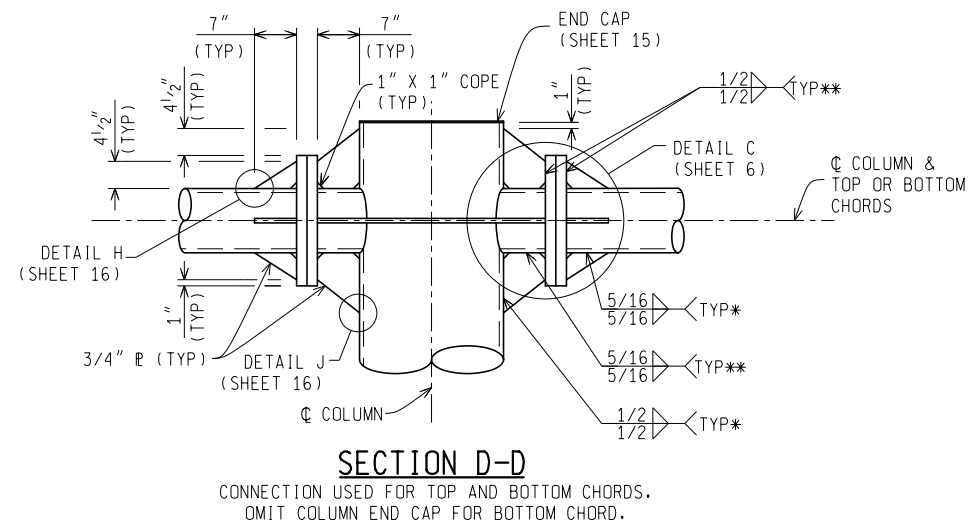
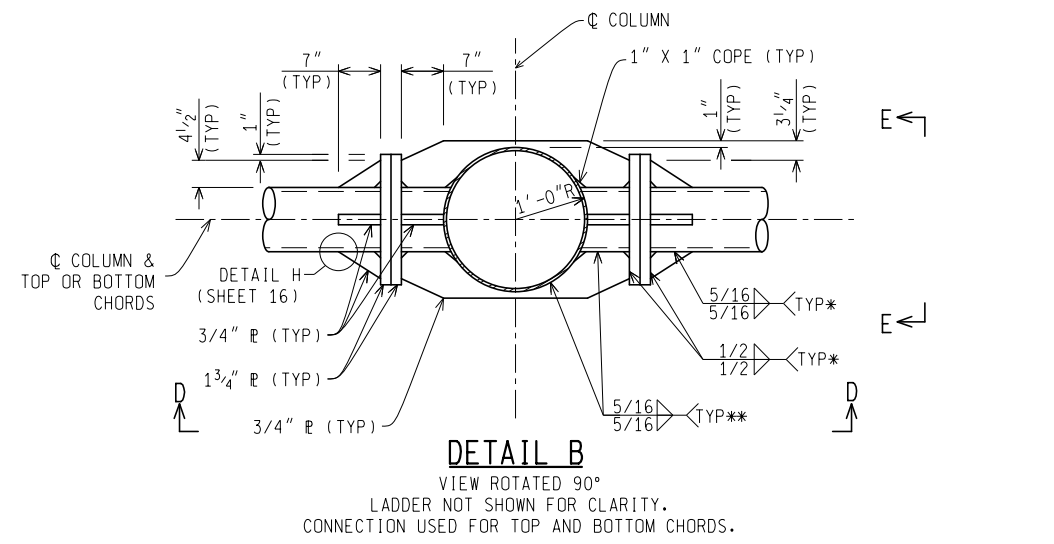
**DETAIL A**

COLUMN, TRUSS WEB ANGLES, AND WALKWAY GRATING NOT SHOWN FOR CLARITY.  
\* WELD 3" X 3" X 1/4" HSS (POST) TO W6 X 16

NOT TO SCALE		File: External Partnerships/ITS Program Office/ITS Standard Details/DMS Structure/ITS-031-A RH Master DMS Structure.dgn		Rev.
MICHIGAN DEPARTMENT OF TRANSPORTATION BUREAU OF DEVELOPMENT STANDARD PLAN	(SPECIAL DETAIL) FHWA APPROVAL DATE	02/06/20 PLAN DATE	ITS-031-A	SHEET 3 of 16

NOT TO SCALE		File: External Partnerships/ITS Program Office/ITS Standard Details/DMS Structure/ITS-031-A RH Master DMS Structure.dgn		Rev.
MICHIGAN DEPARTMENT OF TRANSPORTATION BUREAU OF DEVELOPMENT STANDARD PLAN	(SPECIAL DETAIL) FHWA APPROVAL DATE	02/06/20 PLAN DATE	ITS-031-A	SHEET 4 of 16

FINAL ROW PLAN REVISIONS (SUBMITTAL DATE: )						NO SCALE		DATE: 02/14/2020		CS: JN:		RH Master DMS Structure		DRAWING SHEET SECT	
NO.	DATE	AUTH	DESCRIPTION												



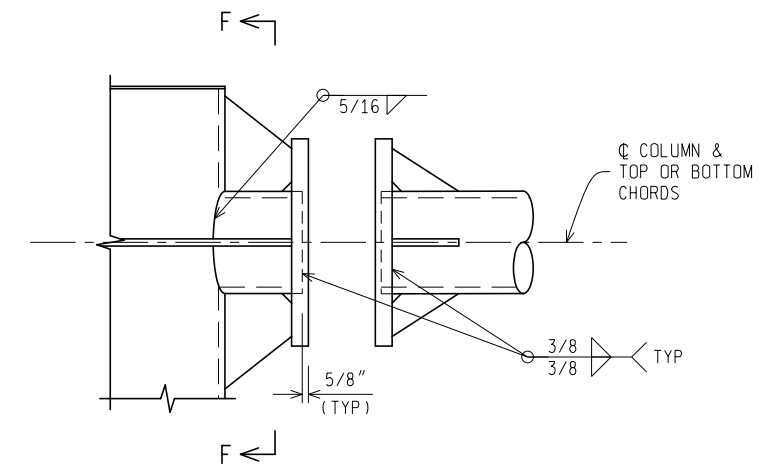
\* WRAP WELD AROUND OUTSIDE EDGE AND STOP 1/4\"/>

\*\* STOP WELD 1/4\"/>

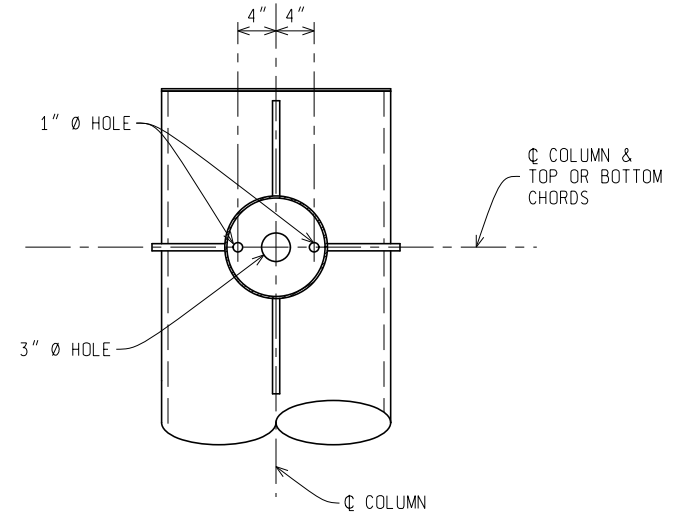
Rev.

NOT TO SCALE File: External Partnerships/ITS Program Office/ITS Standard Details/DMS Structure/ITS-031-A RH Master DMS Structure.dgn

MICHIGAN DEPARTMENT OF TRANSPORTATION BUREAU OF DEVELOPMENT STANDARD PLAN	(SPECIAL DETAIL) FHWA APPROVAL DATE	02/06/20 PLAN DATE	ITS-031-A	SHEET 5 of 16
--	--	-----------------------	-----------	------------------



**DETAIL C**  
DETAIL USED FOR TOP AND BOTTOM CHORDS.

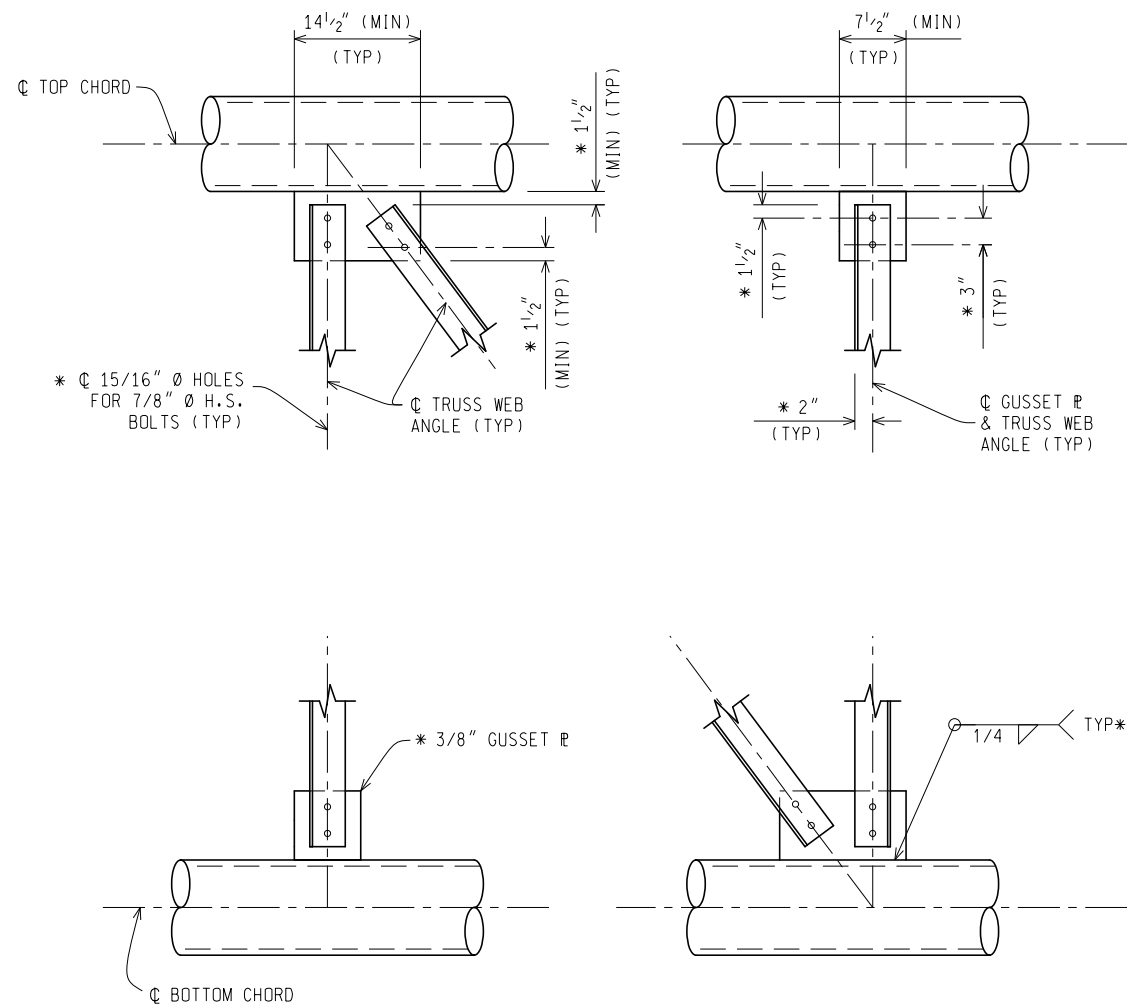


**SECTION F-F**  
DETAIL USED FOR TOP AND BOTTOM CHORDS.

Rev.

NOT TO SCALE File: External Partnerships/ITS Program Office/ITS Standard Details/DMS Structure/ITS-031-A RH Master DMS Structure.dgn

MICHIGAN DEPARTMENT OF TRANSPORTATION BUREAU OF DEVELOPMENT STANDARD PLAN	(SPECIAL DETAIL) FHWA APPROVAL DATE	02/06/20 PLAN DATE	ITS-031-A	SHEET 6 of 16
--	--	-----------------------	-----------	------------------



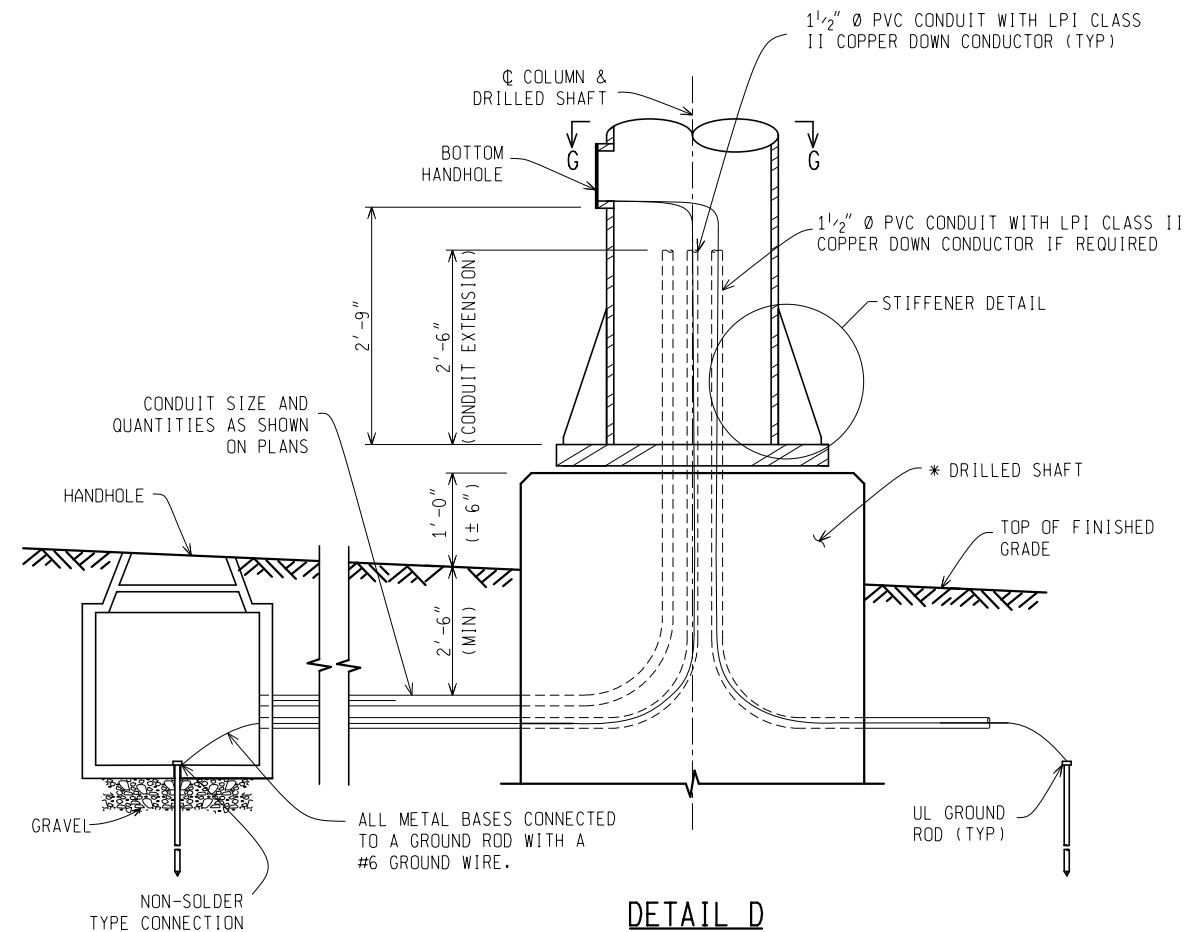
**GUSSET PLATE CONNECTION  
DETAILS**

\* TYPICAL FOR ALL GUSSET PLATE CONNECTION DETAILS.

Rev.

NOT TO SCALE File: External Partnerships/ITS Program Office/ITS Standard Details/DMS Structure/ITS-031-A RH Master DMS Structure.dgn

MICHIGAN DEPARTMENT OF TRANSPORTATION BUREAU OF DEVELOPMENT STANDARD PLAN	(SPECIAL DETAIL) FHWA APPROVAL DATE	02/06/20 PLAN DATE	ITS-031-A	SHEET 7 of 16
--	--	-----------------------	-----------	------------------



**DETAIL D**

\* TYPE A DRILLED SHAFT SHOWN, REFER TO TYPE B DRILLED SHAFT DETAILS FOR BARRIER WALL INSTALLATION.

Rev.

NOT TO SCALE File: External Partnerships/ITS Program Office/ITS Standard Details/DMS Structure/ITS-031-A RH Master DMS Structure.dgn

MICHIGAN DEPARTMENT OF TRANSPORTATION BUREAU OF DEVELOPMENT STANDARD PLAN	(SPECIAL DETAIL) FHWA APPROVAL DATE	02/06/20 PLAN DATE	ITS-031-A	SHEET 8 of 16
--	--	-----------------------	-----------	------------------

FINAL ROW PLAN REVISIONS (SUBMITTAL DATE: )							
NO.	DATE	AUTH	DESCRIPTION	NO.	DATE	AUTH	DESCRIPTION



**NO SCALE**

PRINT DATE: 02/14/2020  
FILE:

DATE:  
DESIGN UNIT:  
TSC:

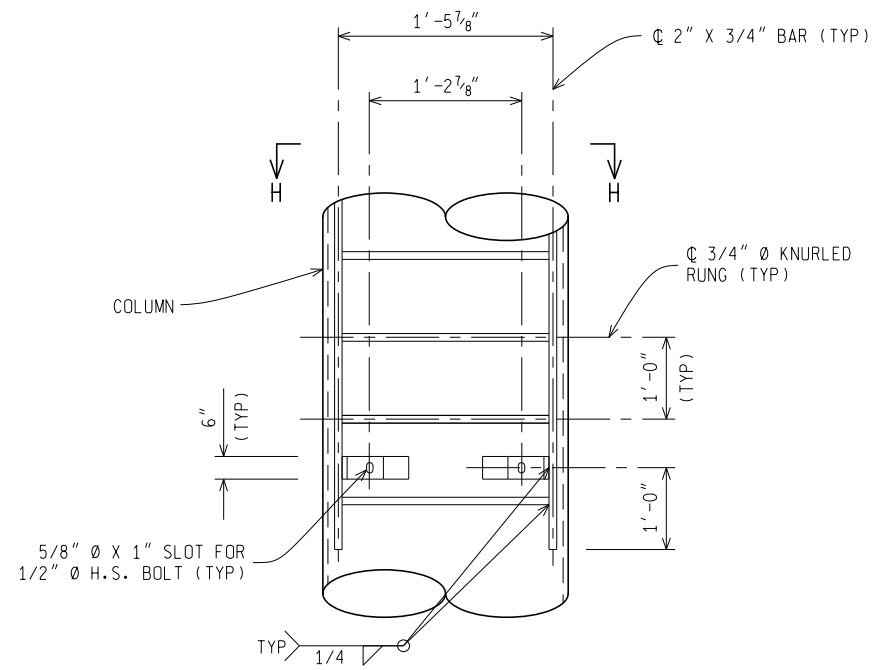
CS:  
JN:

RH Master DMS Structure

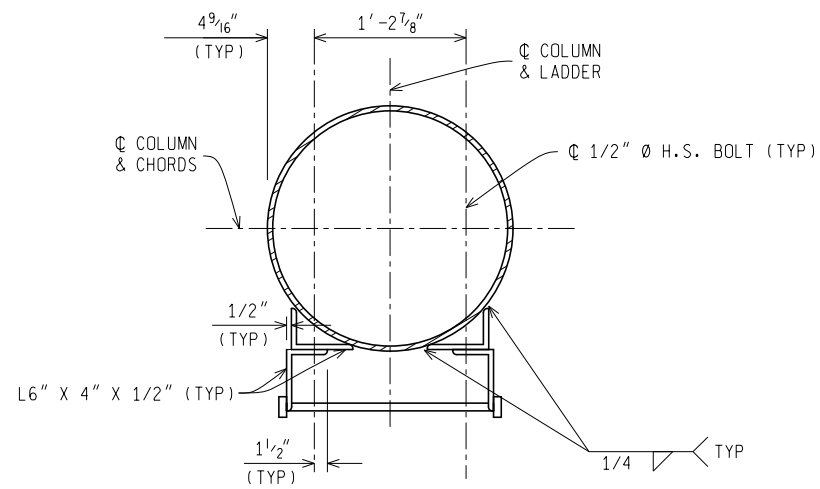
DRAWING SHEET  
SECT

SHEET 4 OF 8





**DETAIL G**

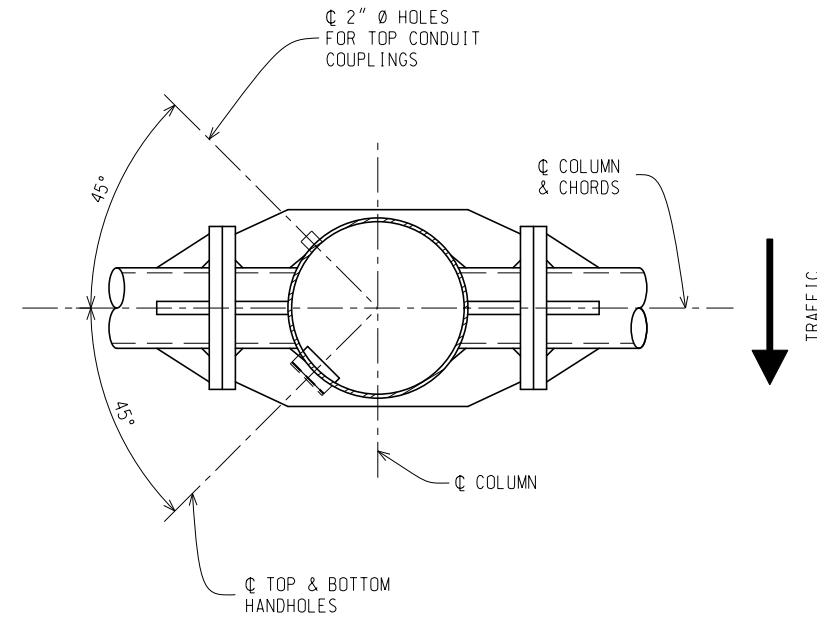


**SECTION H-H**

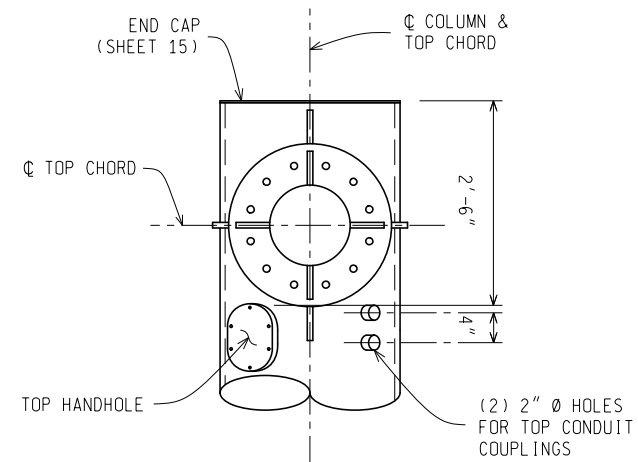
Rev.

NOT TO SCALE File: External Partnerships/ITS Program Office/ITS Standard Details/DMS Structure/ITS-031-A RH Master DMS Structure.dgn

MICHIGAN DEPARTMENT OF TRANSPORTATION BUREAU OF DEVELOPMENT STANDARD PLAN	(SPECIAL DETAIL) FHWA APPROVAL DATE	02/06/20 PLAN DATE	ITS-031-A	SHEET 11 of 16
--	--	-----------------------	-----------	-------------------



**HANDHOLE AND COUPLING ORIENTATION**



**COUPLINGS**

Rev.

NOT TO SCALE File: External Partnerships/ITS Program Office/ITS Standard Details/DMS Structure/ITS-031-A RH Master DMS Structure.dgn

MICHIGAN DEPARTMENT OF TRANSPORTATION BUREAU OF DEVELOPMENT STANDARD PLAN	(SPECIAL DETAIL) FHWA APPROVAL DATE	02/06/20 PLAN DATE	ITS-031-A	SHEET 12 of 16
--	--	-----------------------	-----------	-------------------

FINAL ROW PLAN REVISIONS (SUBMITTAL DATE: )							
NO.	DATE	AUTH	DESCRIPTION	NO.	DATE	AUTH	DESCRIPTION



**NO SCALE**

PRINT DATE: 02/14/2020  
FILE:

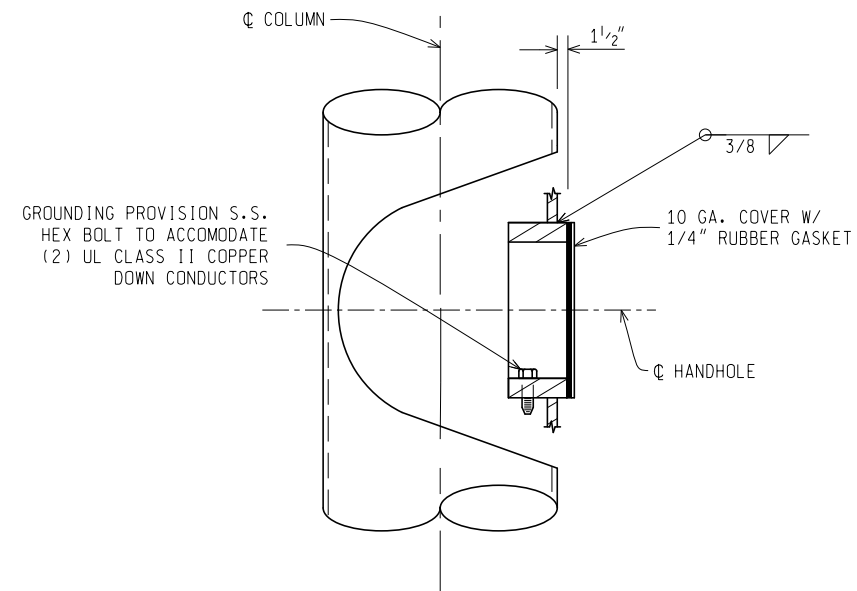
DATE:  
DESIGN UNIT:  
TSC:

CS:  
JN:

RH Master DMS Structure

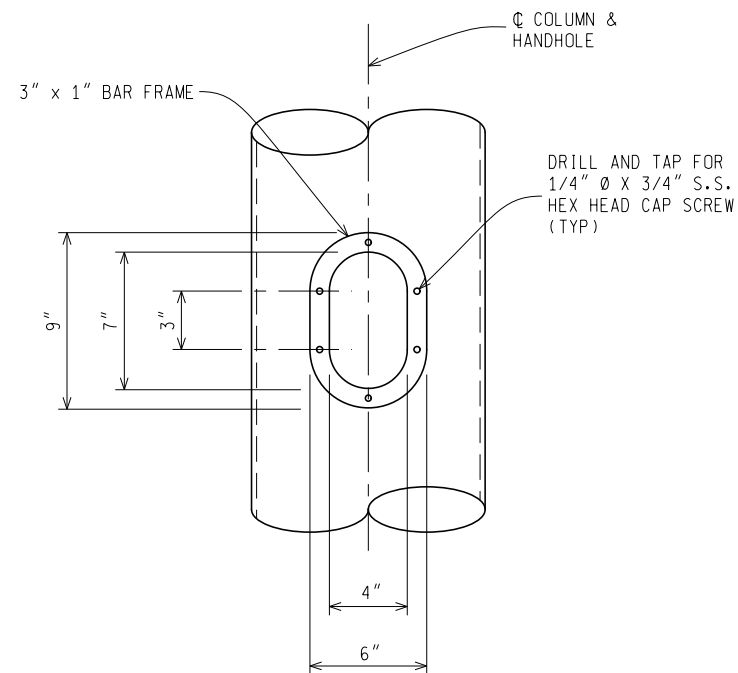
SHEET 6 OF 8

DRAWING SHEET  
SECT



**TOP AND BOTTOM HANDHOLE  
DETAIL**

PLACE C OF TOP HANDHOLE 2'-10 1/2" BELOW THE TOP OF COLUMN.  
PLACE C OF BOTTOM HANDHOLE 3'-1 1/2" ABOVE THE TOP OF BASE PLATE.



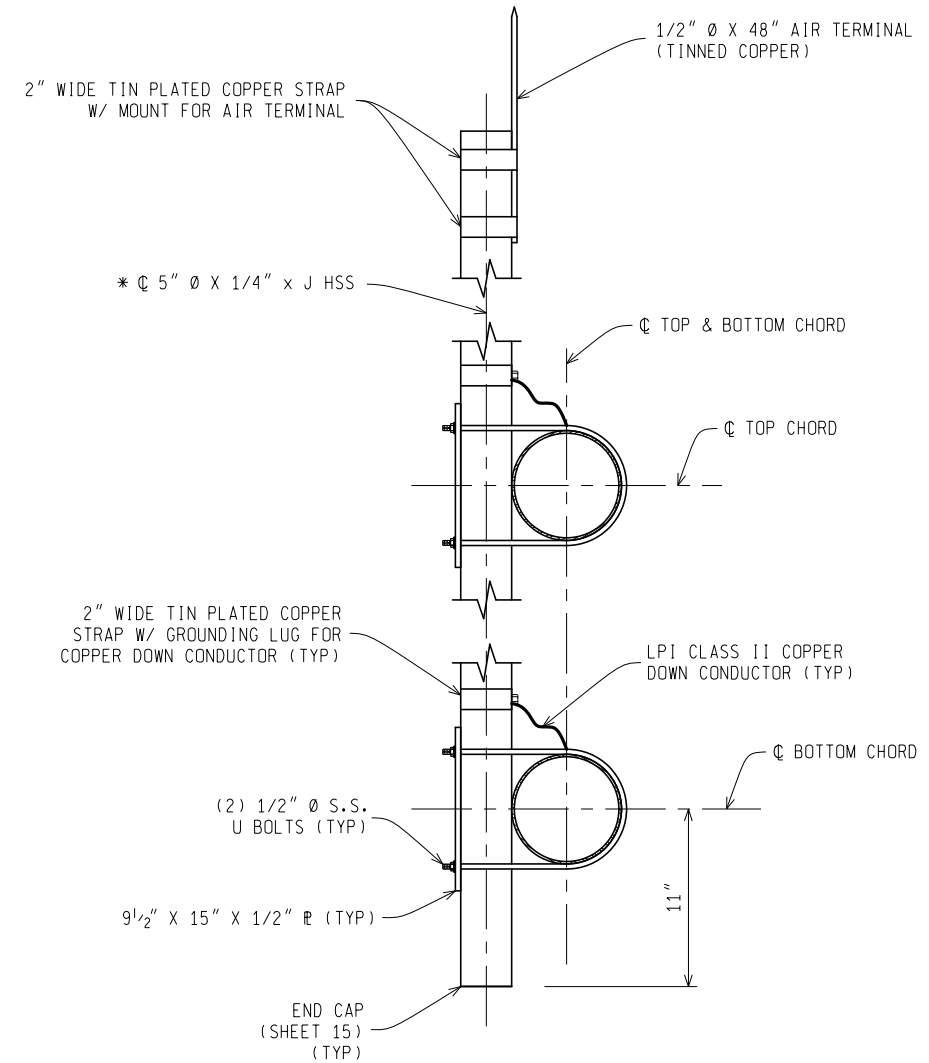
**TOP AND BOTTOM HANDHOLE  
DETAIL**

(VIEW ROTATED 90 DEGREES)

Rev.

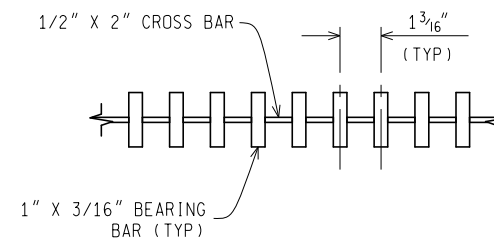
NOT TO SCALE File: External Partnerships/ITS Program Office/ITS Standard Details/DMS Structure/ITS-031-A RH Master DMS Structure.dgn

MICHIGAN DEPARTMENT OF TRANSPORTATION BUREAU OF DEVELOPMENT STANDARD PLAN	(SPECIAL DETAIL) FHWA APPROVAL DATE	02/06/20 PLAN DATE	ITS-031-A	SHEET 13 of 16
--	--	-----------------------	-----------	-------------------



**ANTENNA SUPPORT DETAIL**

\* SEE CONTRACT PLANS FOR HEIGHT (21'-6" MAXIMUM).



**WALKWAY GRATING DETAIL**

ATTACH WALKWAY GRATING TO W6 X 16 MEMBER WITH GALVANIZED FASTENERS APPROVED BY ENGINEER, 2 MIN. PER W6 X 16 MEMBER PER GRATING PIECE.

Rev.

NOT TO SCALE File: External Partnerships/ITS Program Office/ITS Standard Details/DMS Structure/ITS-031-A RH Master DMS Structure.dgn

MICHIGAN DEPARTMENT OF TRANSPORTATION BUREAU OF DEVELOPMENT STANDARD PLAN	(SPECIAL DETAIL) FHWA APPROVAL DATE	02/06/20 PLAN DATE	ITS-031-A	SHEET 14 of 16
--	--	-----------------------	-----------	-------------------

FINAL ROW PLAN REVISIONS (SUBMITTAL DATE: )							
NO.	DATE	AUTH	DESCRIPTION	NO.	DATE	AUTH	DESCRIPTION



**NO SCALE**

PRINT DATE: 02/14/2020  
FILE:

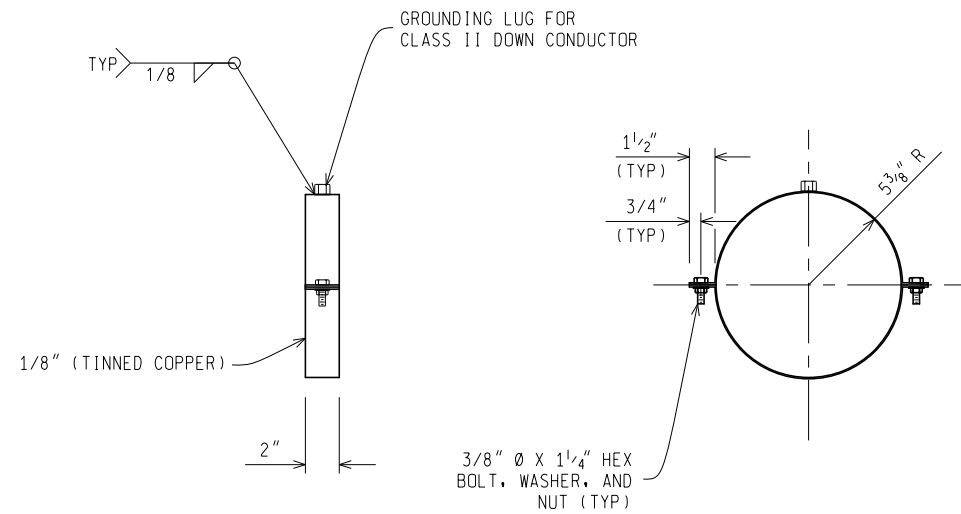
DATE:  
DESIGN UNIT:  
TSC:

CS:  
JN:

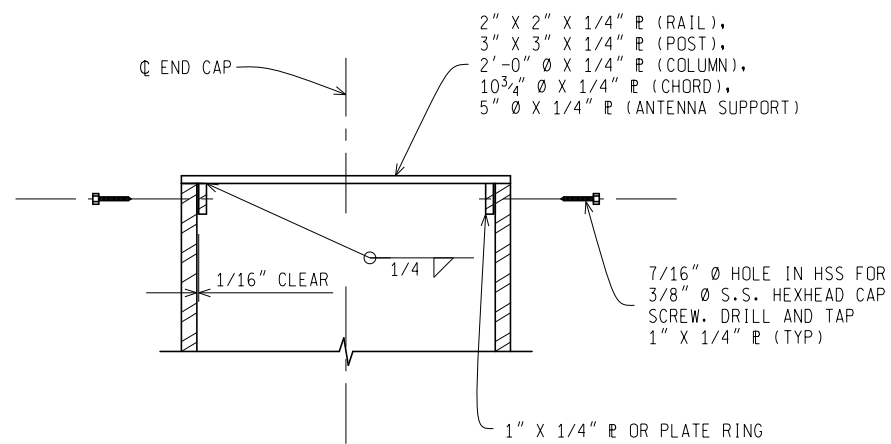
RH Master DMS Structure

SHEET 7 OF 8

DRAWING SHEET  
SECT



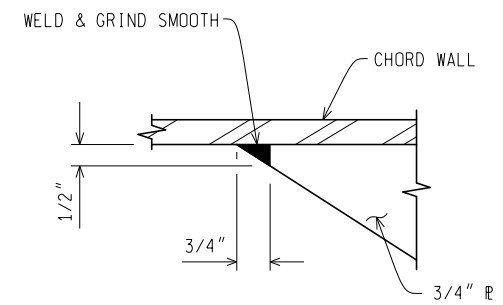
**BONDING CLAMP DETAIL**



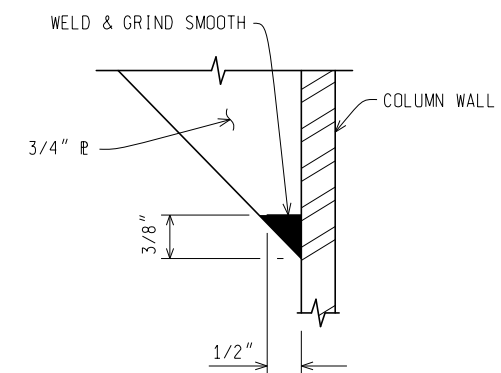
**END CAP DETAIL**

Rev.

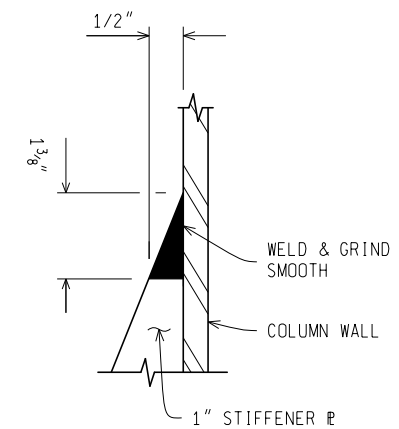
NOT TO SCALE	File: External Partnerships/ITS Program Office/ITS Standard Details/DMS Structure/ITS-031-A RH Master DMS Structure.dgn			
MICHIGAN DEPARTMENT OF TRANSPORTATION BUREAU OF DEVELOPMENT STANDARD PLAN	(SPECIAL DETAIL) FHWA APPROVAL DATE	02/06/20 PLAN DATE	ITS-031-A	SHEET 15 of 16



**DETAIL H**



**DETAIL J**



**DETAIL K**

Rev.

NOT TO SCALE	File: External Partnerships/ITS Program Office/ITS Standard Details/DMS Structure/ITS-031-A RH Master DMS Structure.dgn			
MICHIGAN DEPARTMENT OF TRANSPORTATION BUREAU OF DEVELOPMENT STANDARD PLAN	(SPECIAL DETAIL) FHWA APPROVAL DATE	02/06/20 PLAN DATE	ITS-031-A	SHEET 16 of 16

FINAL ROW PLAN REVISIONS (SUBMITTAL DATE: )							
NO.	DATE	AUTH	DESCRIPTION	NO.	DATE	AUTH	DESCRIPTION



**NO SCALE**

PRINT DATE: 02/14/2020  
FILE:

DATE:  
DESIGN UNIT:  
TSC:

CS:  
JN:

RH Master DMS Structure

SHEET 8 OF 8

DRAWING SHEET  
SECT