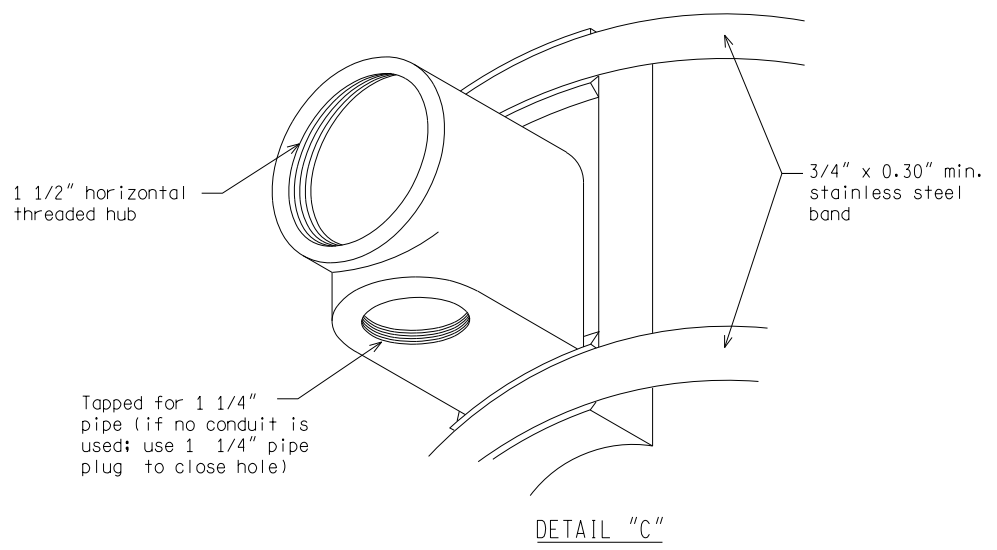


NOTE:
Exterior surface of all mounting assemblies for pedestrian signals including brackets, nuts and related hardware shall be weather-resistant black enamel.

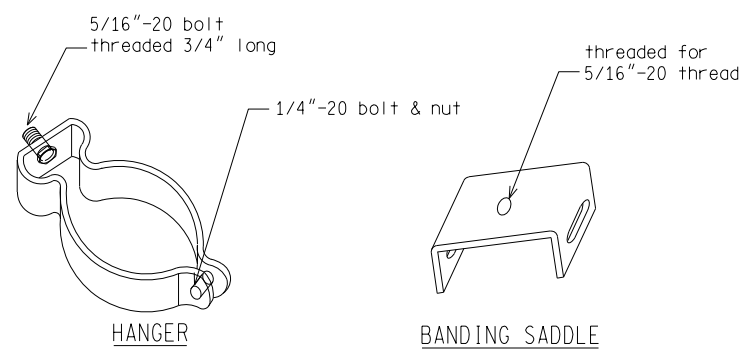
(STEEL STREET POLE OR CONCRETE POLE)



DETAIL "C"

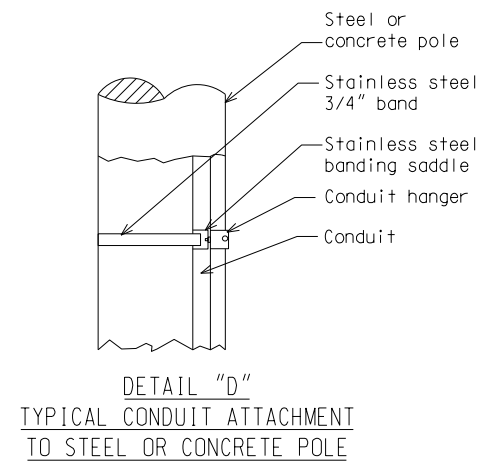
NOT TO SCALE

MICHIGAN DEPARTMENT OF TRANSPORTATION BUREAU OF HIGHWAYS DELIVERY STANDARD PLAN	(SPECIAL DETAIL) FHWA APPROVAL DATE	PLAN DATE	WC-029-C	SHEET 3 of 4
File: PW:RD/TR/Signals/WC SD/Final	Rev. 10/21/14			



HANGER
To fit conduit size hanger as called for on plans (zinc plated)

BANDING SADDLE



DETAIL "D"
TYPICAL CONDUIT ATTACHMENT TO STEEL OR CONCRETE POLE

NOT TO SCALE

MICHIGAN DEPARTMENT OF TRANSPORTATION BUREAU OF HIGHWAYS DELIVERY STANDARD PLAN	(SPECIAL DETAIL) FHWA APPROVAL DATE	PLAN DATE	WC-029-C	SHEET 4 of 4
File: PW:RD/TR/Signals/WC SD/Final	Rev. 10/21/14			

AS-LET PLAN REVISIONS							
NO.	DATE	AUTH	DESCRIPTION	NO.	DATE	AUTH	DESCRIPTION



DATE:	CS:	DRAWING	SHEET
DESIGN UNIT:	JN:		
FILE:	TSC:		