



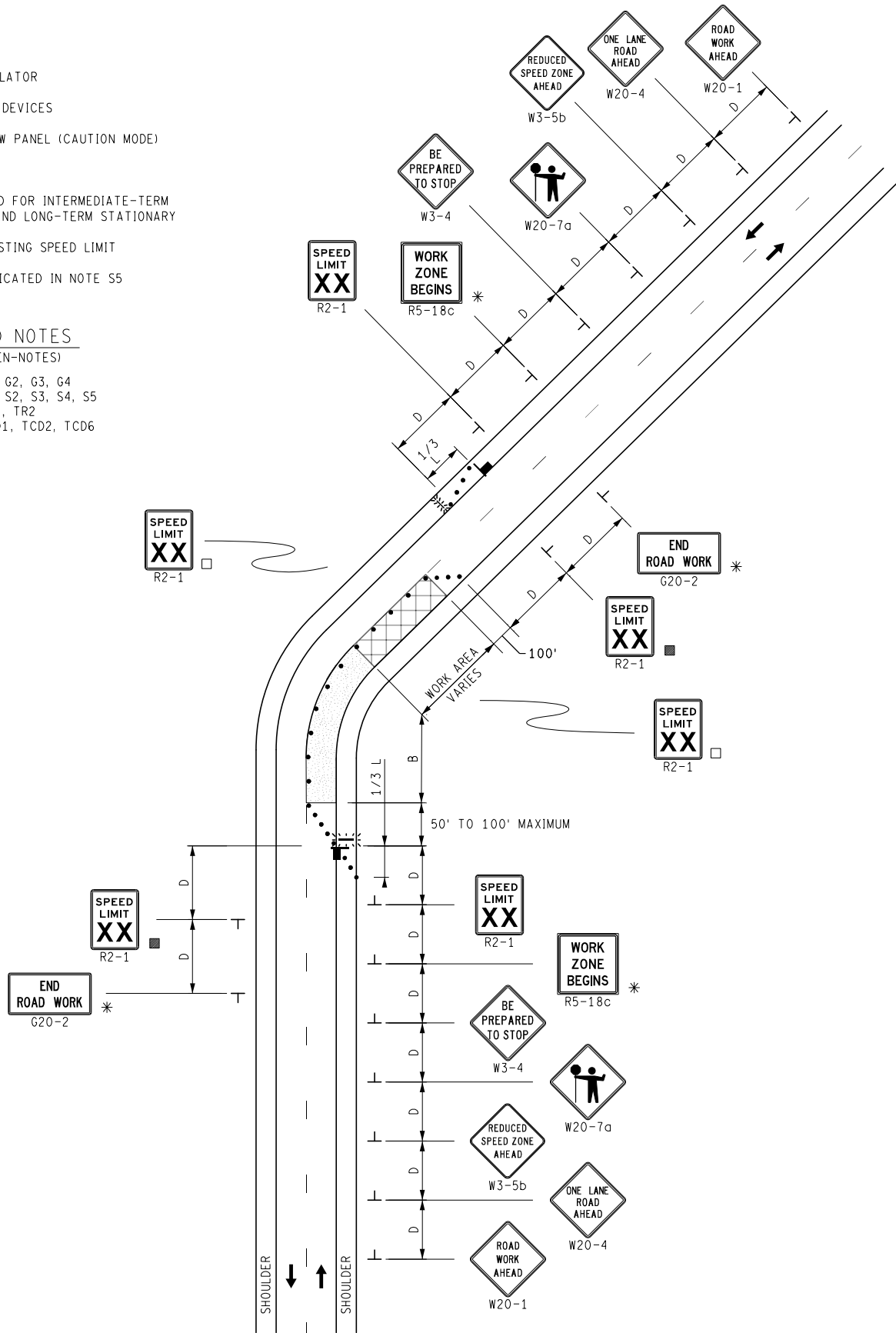


# KEY


-  TRAFFIC REGULATOR
-  CHANNELIZING DEVICES
-  LIGHTED ARROW PANEL (CAUTION MODE)
-  TRAFFIC FLOW
- \* ONLY REQUIRED FOR INTERMEDIATE-TERM STATIONARY AND LONG-TERM STATIONARY
- REFLECTS EXISTING SPEED LIMIT
- PLACE AS INDICATED IN NOTE S5

# STANDARD NOTES

(SEE 102-GEN-NOTES)  
 GENERAL: G1, G2, G3, G4  
 SIGNING: S1, S2, S3, S4, S5  
 TRAF REG: TR1, TR2  
 DEVICES: TCD1, TCD2, TCD6



NOT TO SCALE

	MAINTENANCE MAINTAINING TRAFFIC TYPICAL	DURATION: LONG-TERM STATIONARY INTERMEDIATE-TERM STATIONARY SHORT-TERM STATIONARY	<b>LANE CLOSURE</b> <b>FOR A TWO-LANE, TWO-WAY ROADWAY</b> <b>UTILIZING TRAFFIC REGULATORS</b> <b>WITH A MAXIMUM 10 MPH SPEED REDUCTION</b>	DATE: MAY 2021 NO: 4110B-M-TR-NFW-2L SHEET: 1 OF 1
	FILE: 4110B-M-TR-NFW-2L.dgn			