

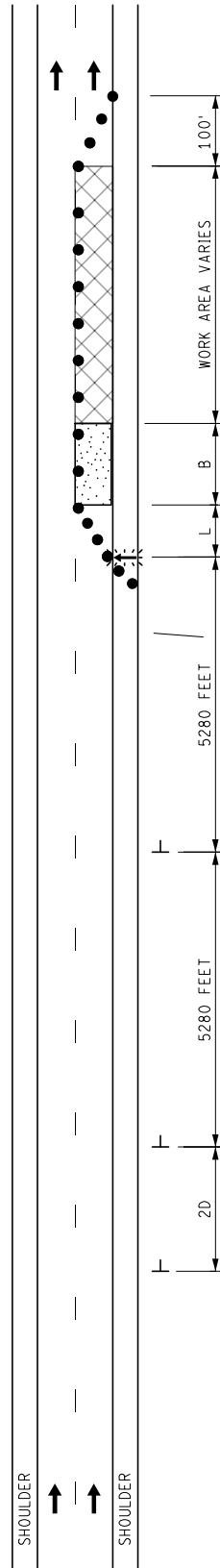
KEY

- CHANNELIZING DEVICES
- ⚡ LIGHTED ARROW PANEL
- ← TRAFFIC FLOW
- PLACE THESE OR OTHER APPROPRIATE WARNING SIGNS FOR THE TRAFFIC CONTROL LAYOUT

STANDARD NOTES

(SEE 102-GEN-NOTES)

GENERAL: G1, G3
SIGNING: S1, S2, S6



PLACE ADDITIONAL SIGNAGE PER THE RELEVANT TYPICAL. THE ONLY "ROAD WORK AHEAD" SIGNS (W20-1) TO BE USED IN THIS LAYOUT ARE THE ONES SHOWN BEFORE THE W20-5 SIGNS.

IN THE CASE OF THIS ILLUSTRATED EXAMPLE, A RIGHT LANE CLOSURE, TYPICAL 203-FW-1LC-(R) WOULD BE USED.

