

9'-0" (TYPICAL)  
 (\*) 10'-0" (RCOC TYPICAL)

9'-0" (TYPICAL)  
 (\*) 10'-0" (RCOC TYPICAL)

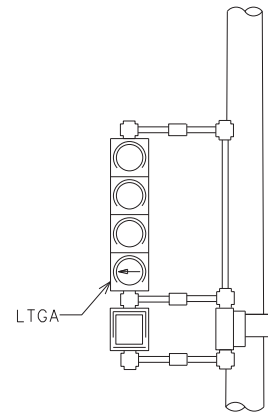
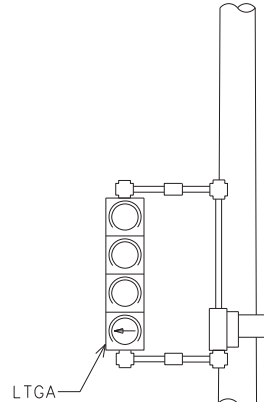
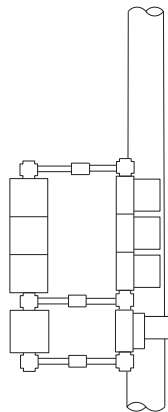
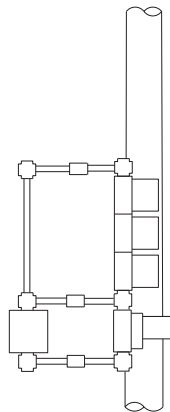
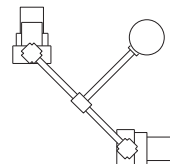
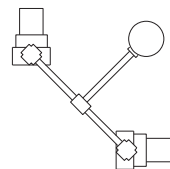
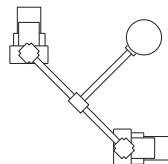
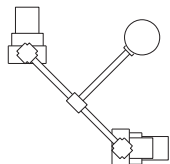
DETAIL "A-3"

DETAIL "B-3"

DETAIL "C-3"

DETAIL "D-3"

DETAIL "E-3"



DETAIL "F-3"

DETAIL "G-3"

DETAIL "H-3"

DETAIL "I-3"

Left Turn Green Arrow (LTGA)

(\*) Refer to Note 5 on Sheet 2 of 2.

NOT TO SCALE

File: RefDoc/TR/Signals/Web/Sp Det/Fin/SIG342A.dgn Rev: 02/16/17



PREPARED BY  
 TRAFFIC AND SAFETY

DRAWN BY:  
 CHECKED BY:

ENGINEER OF DELIVERY

ENGINEER OF DEVELOPMENT

(SPECIAL DETAIL)  
 FHWA APPROVAL DATE

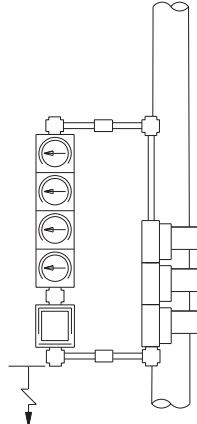
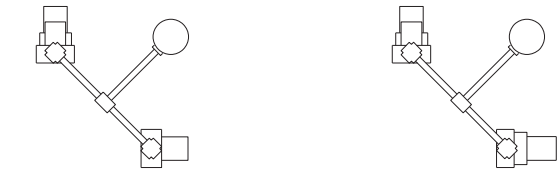
MICHIGAN DEPARTMENT OF TRANSPORTATION  
 BUREAU OF HIGHWAYS DELIVERY STANDARD PLAN FOR

BACK BRACKET  
 SIGNAL DISPLAYS

SIG-342-A

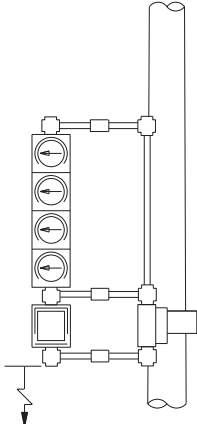
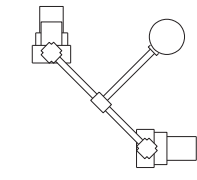
PLAN DATE

SHEET  
 1 of 2



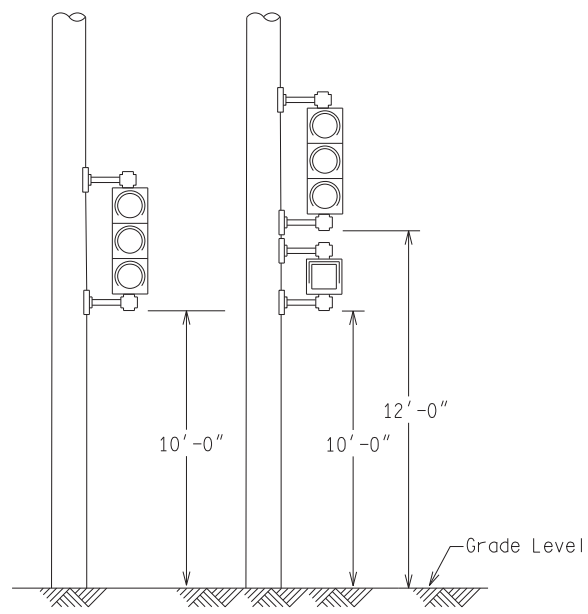
9'-0" (TYPICAL)  
 (\*) 10'-0" (RCOC TYPICAL)

DETAIL "J-3"  
 (FYA)



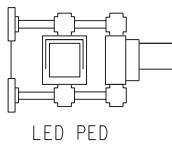
9'-0" (TYPICAL)  
 (\*) 10'-0" (RCOC TYPICAL)

DETAIL "K-3"  
 (FYA)



RCOC Mounting Detail (\*) see note

Flashing Yellow Arrow (FYA)



LED PED

NOTES: Walking person and hand symbol are filled.



LED PED  
 (filled)



Countdown  
 LED PED  
 (filled symbols)

NOTES:

- 1) The relative position of 2-Way T.S. & pedestrian bracket arm signals within the bracket assembly shall be reversed (i.e. the signal nearest the pole goes to the outside of the bracket assembly & the outside signal goes inboard or nearest to pole) according to the plan view to provide clear vehicular and pedestrian viewing.
- 2) Pipe assembly shall be of such length and height as to accommodate traffic signals and pedestrian signals for proper maintenance and clear vehicular and pedestrian viewing.
- 3) Pipe assembly shall be of such length and height as to accommodate an illuminated (12"x27") case sign for proper maintenance and clear vehicular viewing.
- 4) Bracket lengths are 16 inches for LED pedestrian signals and LED pedestrian countdown signals.
- 6) Tolerance within +/- 1/8" for bracketing.

(\*) For projects maintained by the Road Commission for Oakland County (RCOC), use the bottom heights and bracket assemblies as shown for the RCOC mounting detail.

NOT TO SCALE

MICHIGAN DEPARTMENT OF TRANSPORTATION BUREAU OF HIGHWAYS DELIVERY STANDARD PLAN	(SPECIAL DETAIL) FHWA APPROVAL DATE	PLAN DATE	SIG-342-A	SHEET 2 of 2
File: RefDoc/TR/Signals/Web/Sp Det/Fin/SIG342A.dgn Rev. 02/16/17				